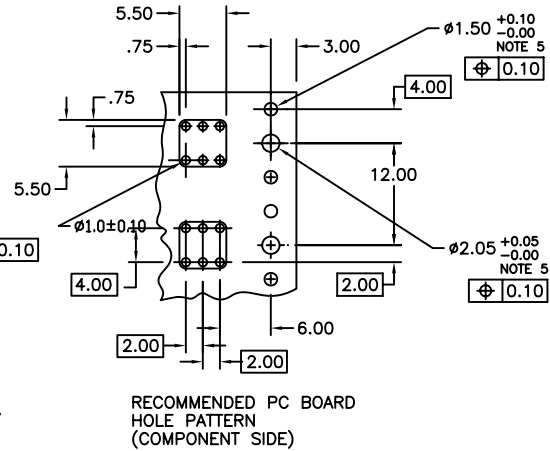
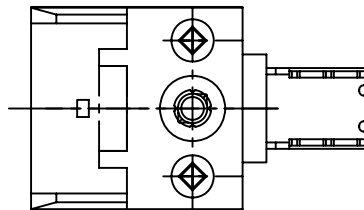
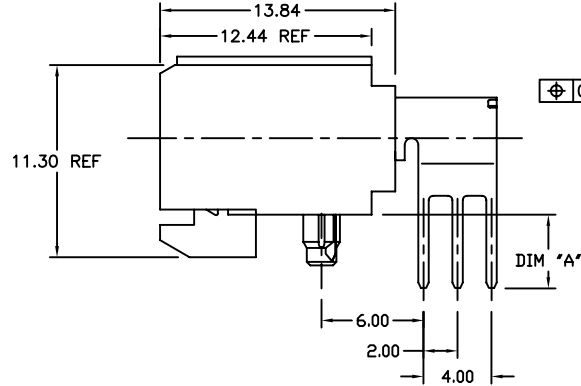
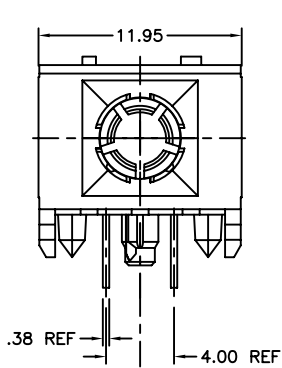


PRODUCT NO.	PCB THICKNESS	DIM A
70426-002	2.4	3.5
70426-003	1.6	2.7
70426-002LF	2.4	3.5
70426-003LF	1.6	2.7



NOTES:

- BODY MATERIAL: LCP, 30% GLASS-FILLED, FLAME RETARDANT, ACC, UL94-V0
- TERMINAL MATERIAL: BeCu
- PLATING SOLDER TAILS: FOR 70246-OXX SnPb
FOR 70246-OXXLF Sn (LEAD FREE)
- PLATING CONTACT AREA: 0.80µm Au OVER 1.3µm Ni.
- INDICATED HOLES ARE UNPLATED
- PRODUCT MARKETING: PART NUMBER & BATCH I.D.
- THE PRODUCTS WHERE THE PART NUMBER ENDS IN "LF" MEET THE EUROPEAN DIRECTIVES AND OTHER COUNTRY REGULATIONS AS DESCRIBED IN GS-22-008.
- ALL PRODUCTS WILL WITHSTAND EXPOSURE TO 260° FOR 60 SECONDS IN A CONVECTION, INFRA-RED OR VAPOR PHASE REFLOW OVEN.

mat'l. code		surface		tolerance		projection		product family	
-		ASME Y14.5		ASME Y14.5		MM		METRAL (tm)	
ltr	ecn no	dr	date	tolerances unless otherwise specified		MM		title	
A	V60323	SAR	1996-09-03	angles	XXxB	MM		POWER CONNECTORS ASS'Y	
B	V61725	SAR	1996-11-18	appd	XXX*.051	scale 1:1		W/ METRAL HSG 89092	
C	V81212	MDF	1998-06-17	d'	XXxB	scale 1:1		dwg no	
D	V01598	JWS	2000-07-12	dr	S. ROYER	1996-09-06		sheet 1 of 1	
E	V04-1128	DAI	2005-02-08	engr	C. PENDLETON	1996-09-06		size	
F	V06-0808	JRV	2006-06-21	chr	C. PENDLETON	1996-09-06		70426	
sheet index		revision sheet		F		FCI		type CUSTOMER Drawing	
		1							

Mouser Electronics

Authorized Distributor

Click to View Pricing, Inventory, Delivery & Lifecycle Information:

[FCI / Amphenol:](#)

[70426-002LF](#) [70426-003LF](#)