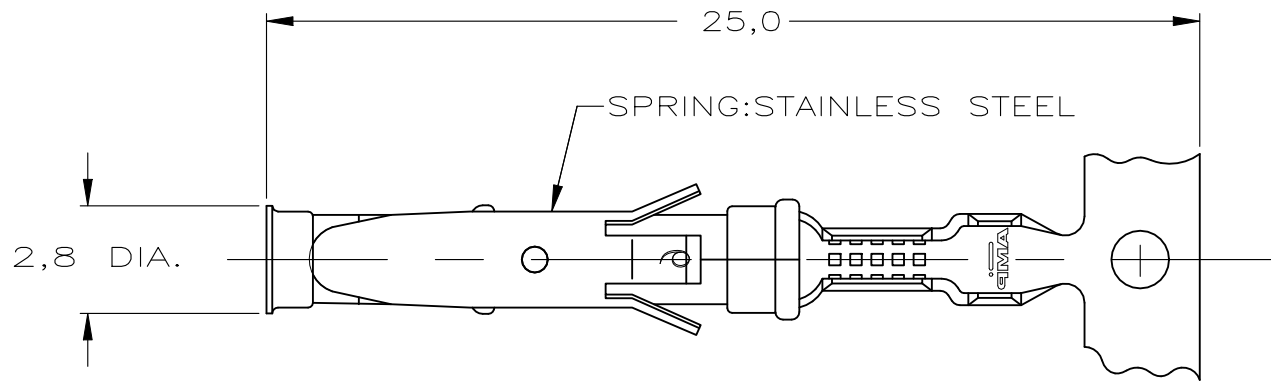
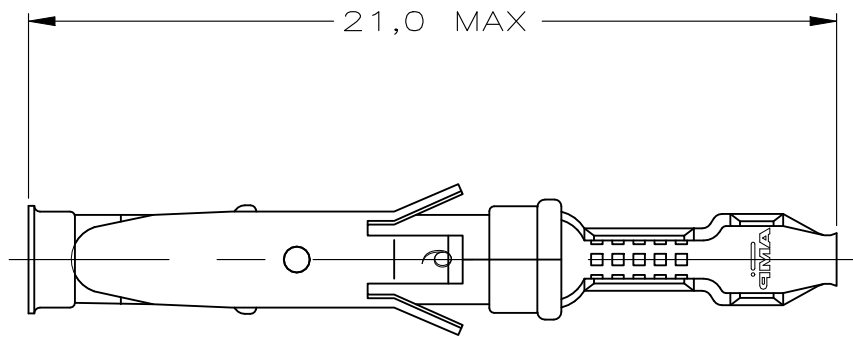


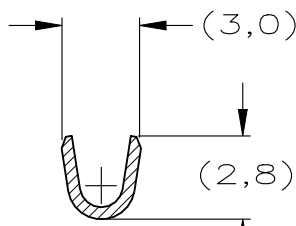
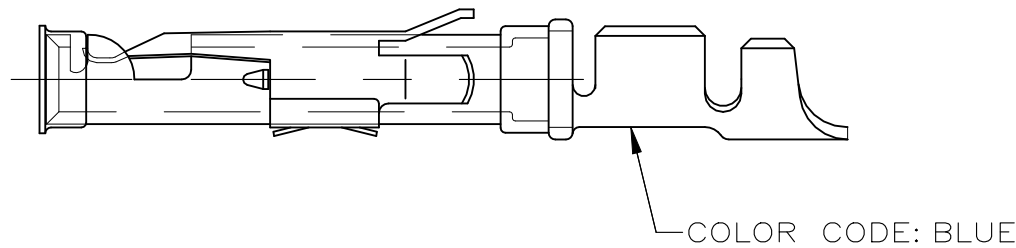
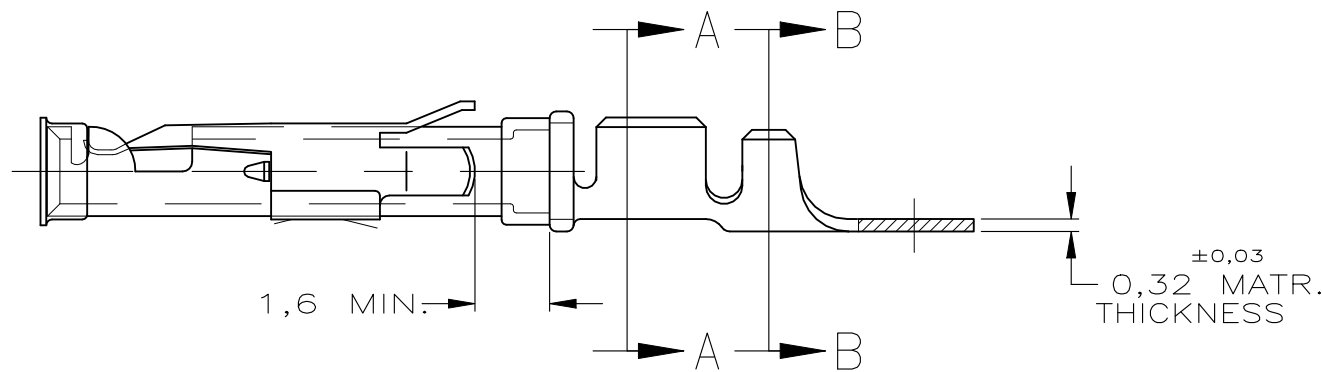
REVISIONS					
P	LTR	DESCRIPTION	DATE	DWN	APVD
	BA	ECO-21-006957	25JUN2021	RK	MZ



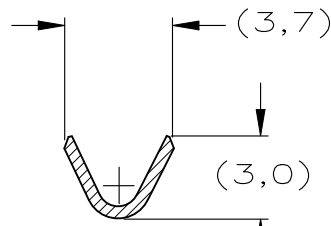
STRIP



LOOSE-PIECE



SECTION A-A



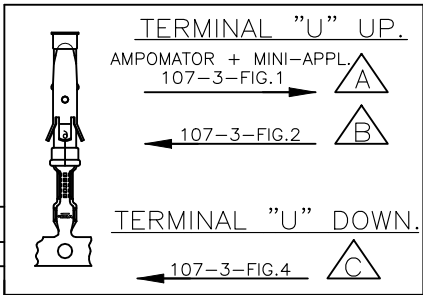
SECTION B-B

WIRE	RANGE : 0,75-1,50 mm <sup>2</sup> (18-16 AWG)
INSUL.	RANGE : 2,0-2,5 mm (.080-.100)

OBSOLETE	5-163083-3	C	1-163084-4	BRASS	ECON.GOLD	21
	5-163083-2	C		BRASS	SEL.GOLD	22
	5-163083-1	C		BRASS	EL.TIN	20
	1-163083-4	A	1-163084-4	BRASS	EL.TIN	31 20
OBSOLETE	1-163083-3	A	1-163084-3	BRASS	BR.TIN	30
	1-163083-2	A	163084-9	BRASS	SILVER	28
	1-163083-1	A		BRASS	ECON.GOLD	21
	1-163083-0	B	1-163084-0	BRASS	ECON.GOLD	21
	163083-9	B		BRASS	SILVER	28
	163083-8	A		BRASS	EL.TIN	20
	163083-7	A		BRASS	SEL.GOLD	22
	163083-2	B	163084-2	BRASS	SEL.GOLD	22
	163083-1	B	163084-1	BRASS	EL.TIN	20
PART NUMBER		DIRECTION OF REEL	LOOSE-PIECE	MATERIAL	PLATING	

- NOTES :
- 1 UL RECOGNIZED UNDER E28476 VOL VI SEC I
  - 2 FOR CRIMP DETAILS SEE SPEC. 114-19000
  - 3 MEETS PRODUCT SPECIFICATION 108-10042
  - 4 SPECIAL REEL WITH 200PCS FOR REEL-FED HAND-TOOL
  - 5 OBSOLETE PARTS: OBSOLETE CIS STREAMLINING PER D.RENAUD/D.SINISI
  - 6 OBSOLETE
  - 7 OMISSION OF 6 CONTACTS MAX PER REEL OF 5000PCS
  - 31 LUBRICATED

NOTES	MATERIAL	THICKNESS	AREA
20	TIN	2,0 μm	ALL OVER
21	NICKEL GOLD TIN	.76 μm 1.01 μm	ALL OVER CONTACT AREA BARREL
22	NICKEL GOLD TIN	1.27 μm .76 μm 1.01 μm	ALL OVER CONTACT AREA BARREL
23	NICKEL GOLD	1,2 μm	ALL OVER CONTACT AREA ALL OVER
27	NICKEL SILVER TIN	2,5 μm	ALL OVER CONTACT AREA BARREL
28	SILVER NICKEL	1,5-2,5 μm 0,76 μm	ALL OVER
29	SILVER	2,5 μm	ALL OVER
30	NICKEL TIN	1,27 μm 1,27 μm	ALL OVER ALL OVER



THIS DRAWING IS A CONTROLLED DOCUMENT.

DIMENSIONS:	TOLERANCES UNLESS OTHERWISE SPECIFIED:
mm	
	0 PLC ± -
	1 PLC ± -
	2 PLC ± -
	3 PLC ± -
	4 PLC ± -
	ANGLES ± -
	FINISH ± -
MATERIAL	REFER TABLE
REFER TABLE	REFER TABLE

DWN	M THAJUDEEN	21JULY2015	TE Connectivity		
CHK	GANI NIMBENNAPPA	21JULY2015			
APVD	PRASHANTH S	21JULY2015			
PRODUCT SPEC	108-10042				
APPLICATION SPEC	114-19000		TYPE III+, SIZE 16, SOCKET ASS'Y, 18-16 AWG, 2.0-2.5mm DIA INSULATION		
WEIGHT	-		SIZE	CAGE CODE	DRAWING NO
CUSTOMER DRAWING			A3	00779	C-163083
			SCALE	SHEET	REV
			-	1 of 1	BA

# Mouser Electronics

Authorized Distributor

Click to View Pricing, Inventory, Delivery & Lifecycle Information:

[TE Connectivity:](#)

[1-163084-0](#)