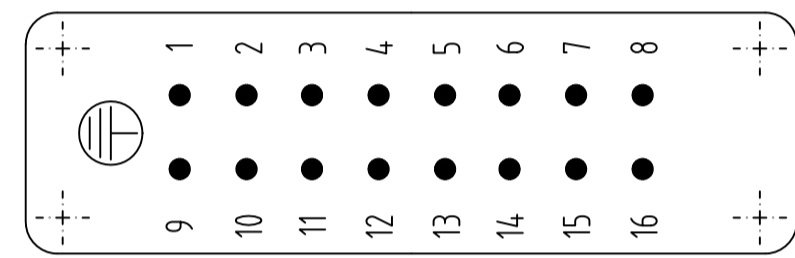
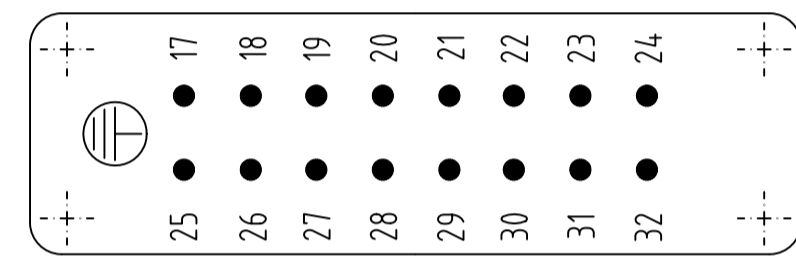


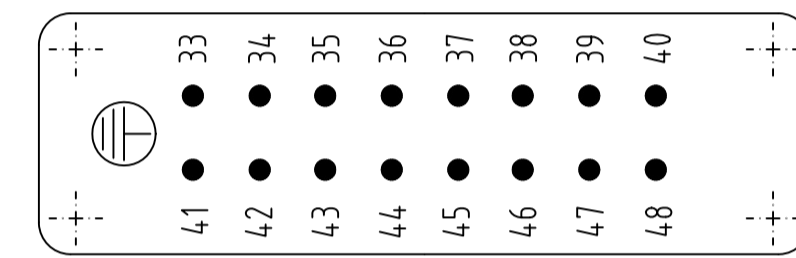
Contact arrangement / view from termination side



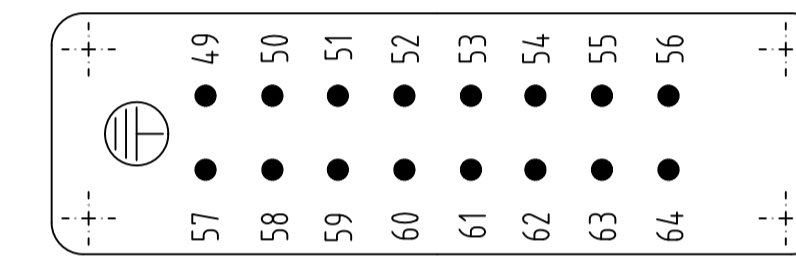
Contact arrangement / view from termination side



Contact arrangement / view from termination side



Contact arrangement / view from termination side

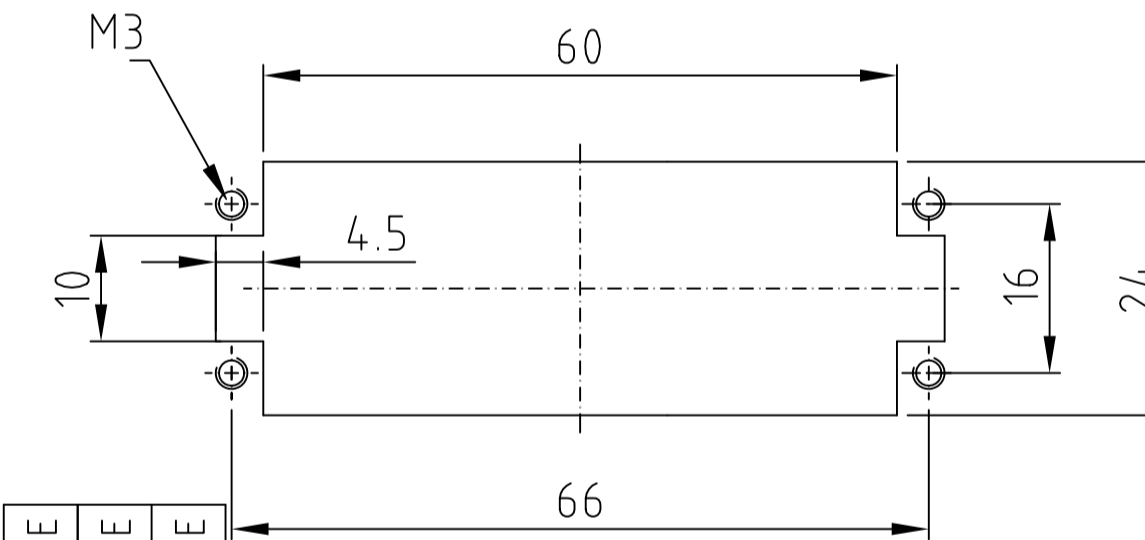


NOTES:

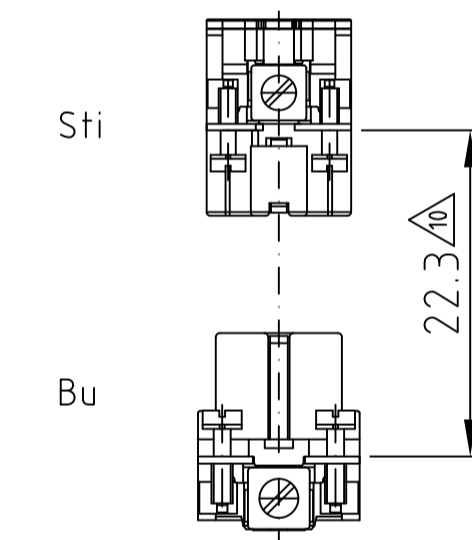
- 1 SUITABLE CRIMP CONTACTS: SERIES HE/HA
OUTER DIMENSIONS OF INSULATION: MAX. Ø3,2 MM
- ⚠ SUITABLE HOOD SIZE 5; 7; 9; 11: SERIES HA; HD
SUITABLE INSERTION AND EXTRACTION TOOL:
SCREWDRIVER 0,5x3 DIN 5264
- ⚠ Strip lenght: Screw connection 10mm
Spring clamp connection 10mm Crimp connection 7.5mm
- ⚠ STANDARDS:
DIN EN 61984; DIN EN 60664-1
- ⚠ PACKAGING:
5 SETS IN A CARTON, PRE-MOUNTED
- ⚠ SPECIAL PACKAGING: Krauss-Maffei
PACKAGING UNIT: 300 PIECES
- ⚠ SPECIAL PACKAGING: Krauss-Maffei
PACKAGING UNIT: 150 PIECES
- ⚠ SPECIAL PACKAGING: AIS
PACKAGING UNIT: 250 PIECES
- ⚠ SPECIAL PACKAGING: WIELAND
PACKAGING UNIT: 100 PIECES
- ⚠ SEE TE CONNECTIVITY QUALITYMANAGEMENT PROCEDURE NO. 1.12

Panel cut-out for contact insert

when used without housing



Assembling instruction



⚠ DISTANCE FOR SAFETY CONTACT MARKING MAX. 24 mm

1-3	1-2	1-0	0-4	0-7	0-6	0-5	2-9	1-9	7-9	7-8	1-8	2-8	1-7	7-2	7-1	2-3	1-1	DESCRIPTION / BENENNUNG	MATERIAL	COLOR / FARBE	ITEM NO. POS.	REMARKS / BEMERKUNGEN
⚠	⚠	⚠	⚠	⚠	⚠	⚠	⚠	⚠	⚠	⚠	⚠	⚠	⚠	⚠	⚠	⚠	⚠	Pin insert screw	PBT	light beige	8	with stainless steel-fixing screw
																		Pin insert screw	PBT	light beige	7	with stainless steel-fixing screw
																		Pin insert screw	PBT	light beige	6	with AU contact
																		Cover	PBT	light beige	5	
																		Cover	PBT	light beige	4	
1	1	1	1	1	1	1	1	1	1	1	1	1	1	1	1	1	1	Cover	PBT	light beige	3	
																		pin insert spring clamp	PBT	light beige	2	
																		pin insert crimp/screw	PBT	light beige	1	

ORDERING TEXT / BESTELLETEXT HA-16-Sti.S-B1-16-WiE HA-16-Sti.S-B1-16-AIS HA-16-Sti.S-B17-32-KM HA-16-Sti.S-B1-16-KM HA-16-Sti.S-VA-B1-16 HA-16-Sti.S-VA-B17-32 HA-16-Sti.S-AU-B1-16 HA-16-Sti.S-C-B-49-64 HA-16-Sti.S-B-49-64 HA-16-Sti.S-C-B-49-64 HA-16-Sti.S-C-B-33-48 HA-16-Sti.S-B-33-48 HA-16-Sti.S-B-17-32 HA-16-Sti.S-C-B-17-32 HA-16-Sti.S-C-B-17-32 HA-16-Sti.S-C-B-1-16 HA-16-Sti.S-B-1-16 HA-16-Sti.S-B-1-16	THIS DRAWING IS A CONTROLLED DOCUMENT.	DWN Schneider 09.02.2000 CHK Schweiger 09.02.2000 APVD -	TE TE Connectivity	
	DIMENSIONS: mm	TOLERANCES UNLESS OTHERWISE SPECIFIED: 0 PLC 1 PLC 2 PLC 3 PLC 4 PLC ANGLES FINISH	PRODUCT SPEC 108-74007 APPLICATION SPEC 114-77009 WEIGHT	NAME Male insert HA.16.Sti.C SIZE A2 CAGE CODE 00779 DRAWING NO. C=1103416 RESTRICTED TO -
	MATERIAL -	CUSTOMER DRAWING	SCALE 1:1 SHEET 1 OF 1 REV D6	REVISIONS

Mouser Electronics

Authorized Distributor

Click to View Pricing, Inventory, Delivery & Lifecycle Information:

[TE Connectivity:](#)

[1-1103416-7](#)