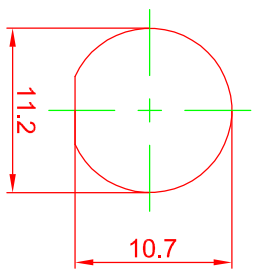
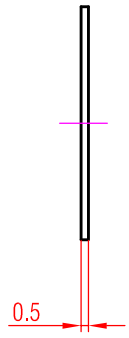
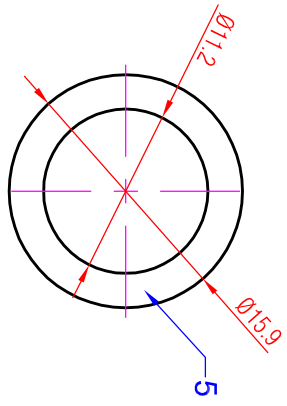
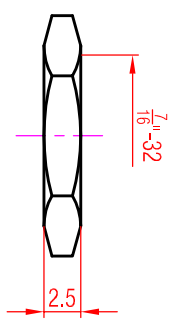
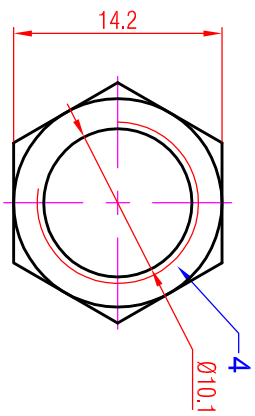


NUT

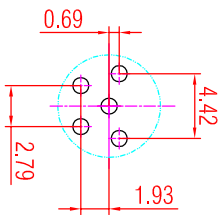
WASHER



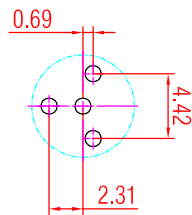
PANEL CUTOUT

CONTACT LAYOUT

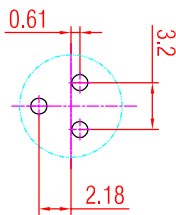
5-POLE:



4-POLE:



3-POLE:



5	WASHER	IRON SHEET, NICKEL PLATED
4	NUT	BRASS, NICKEL PLATED
3	PIN CONTACT	BRASS, GOLD PLATED
2	PLASTIC INSERT	PA66 + GF30% (HEAT STABILIZED)
1	HOUSING	ZINC ALLOY, NICKEL PLATED
NO	PART NAME	MATERIAL

Rev.	Revision Details	Date	Name	THIS DOCUMENT IS THE PROPERTY OF HEINRICH NO PART THEREOF MAY BE REPRODUCED AND USED WITHOUT THE PRIOR WRITTEN CONSENT OF THE OWNER	Material:  Scale: 2 : 1	Designer: 2014.01.13 Wang XM	Date: 2014.01.13 Abelman	Name: Wang XM
				Title: RT*MP	Replaced By: 1	Replaces: 1	Drawing No.:	

# Mouser Electronics

Authorized Distributor

Click to View Pricing, Inventory, Delivery & Lifecycle Information:

[Neutrik:](#)

[RT5MP](#)