

Cable plug DIN EN 175301-803

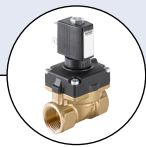


- Protection class IP65
- With approvals: UR, CSA, VDE
- Easy to install
- Also available with moulded-on cable connection

Type 2516 can be combined with...



Type 6011



Type 6211



Type 6212



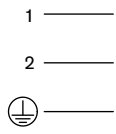
Type 6228

Plug-in connection for the connection of electrical components according to DIN EN 175301-803 Form C (previously DIN 43650).

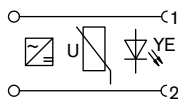
Technical data	
Body material	Polyamide
Contact material	Brass
Cable diameter	4.5...6 mm
Temperature range (ambient)	
Plug	-40°...+125 °C
Seal	-25°...+90 °C
Functional display	LED, colour yellow
Nominal voltage	0...250 V
Maximum current rating	without circuitry: 6 A with diode: 3 A
Contact resistance	≤10 mΩ
Electrical connection	Terminal screws
Protection class	IP65
Number of terminals	2 pins + protective earth

Circuit

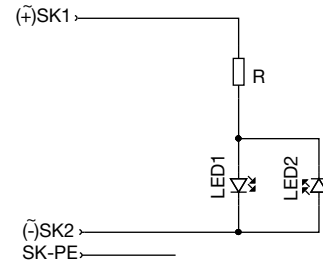
Without circuitry



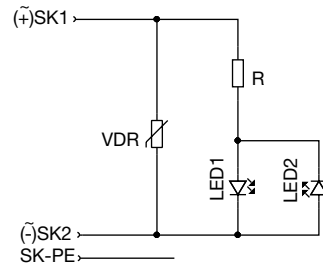
With rectifier, varistor and LED



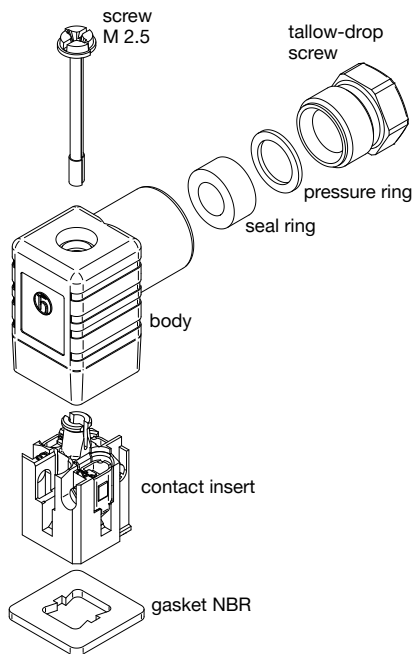
With LED



With LED and varistor

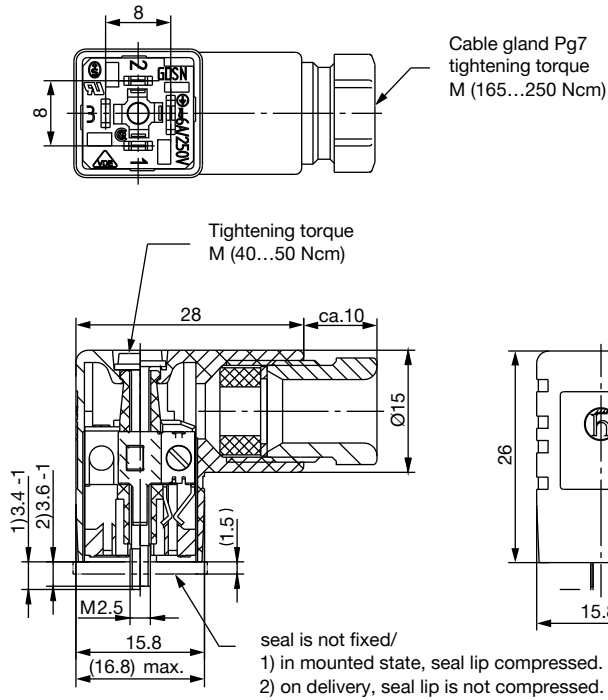


Explosion drawing

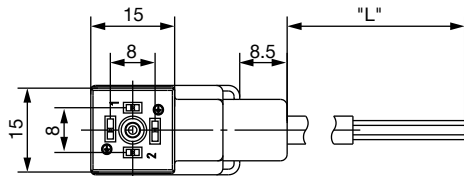


Dimensions [mm]

Without cable



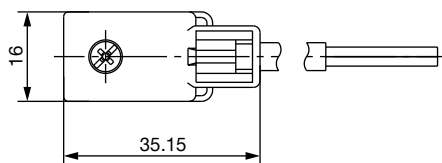
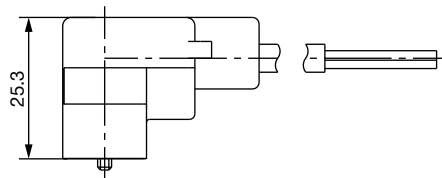
With cable



Cable length

L	3 m
---	-----

5 m and 10 m on request




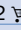










Note:

For appliance plugs with moulded cable
no additional gasket is required.
The seal is moulded onto the cable head.

Ordering chart

The delivery of a cable plug includes the flat seal and fixing screw

Voltage	Current rating	Article no. without cable	Article no. with 2 m cable	Article no. with 3 m cable
Without circuitry				
0...250 V AC/DC	max. 6 A	303141 	303161 	-
With LED				
12...24 V AC/DC	max. 3 A	303145 	303162 	-
100...120 V AC/DC	max. 3 A	303146 	-	-
200...240 V AC/DC	max. 3 A	303147 	-	-
With rectifier, varistor and LED				
12...24 V AC/DC	max. 1 A	-	-	303142 
100...120 V AC/DC	max. 1 A	-	-	303143 
200...240 V AC/DC	max. 1 A	-	-	303144 
With LED and varistor				
12...24 V AC/DC	max. 3 A	303148 	-	-
100...120 V AC/DC	max. 3 A	303149 	-	-
200...240 V AC/DC	max. 3 A	303150 	-	-

To find your nearest Bürkert facility, click on the orange box →

www.burkert.com

In case of special application conditions,
please consult for advice.

Subject to alteration.
© Christian Bürkert GmbH & Co. KG

1807/4_EU-en_00895325