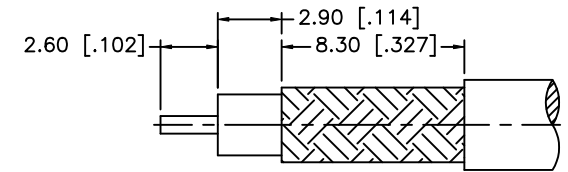
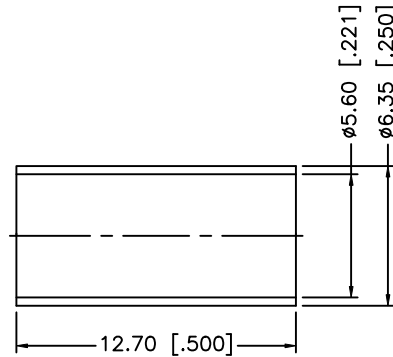
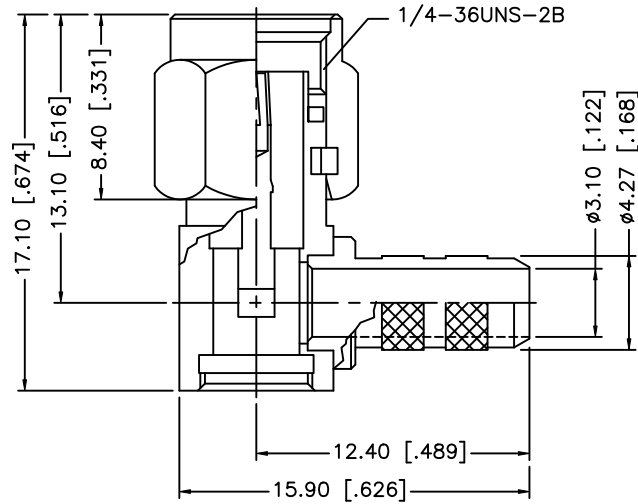
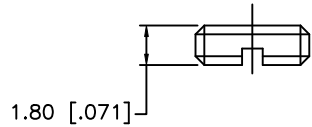


REV.	DATE	ECR NO.	DESCRIPTION
A	04/31/03	-	UPDATE DRAWING FORMAT
B	06/21/05	-	CHANGE 59/U TO 58/U IN PART DESCRIPTION
C	09/10/08	-	CHANGE 58/U TO 55/U IN PART DESCRIPTION



RECOMMENDED
CABLE STRIPPING DIM'S



NOTE:

1. CRIMPED FERRULE HEX CRIMP SIZE .213" [5.41]
2. CONTACT PIN TO SOLDER.

DESCRIPTION	MATERIAL	FINISH	QTY	DO NOT SCALE DRAWING	APPROVALS	DATE	Amphenol Connex						
8							SMA R/A CRIMP PLUG (FOR RG-55/U, 223/U, 142/U, 400/U CABLE)						
7	FERRULE	COPPER	GOLD	1	DRAWN	GRS					09/10/08	PART DESCRIPTION	
6	COVER	BRASS	GOLD	1	CHECKED						PART NO.		
5	GASKET	SILICONE	RED	1	ISSUED						132194		
4	RETAINER RING	BER. COPPER	NATURAL	1	SHEET	1 OF 1					DWG. NO.		
3	CONTACT PIN	BRASS	GOLD	1	CAD FILE		132194.DWG	REV.	NC	SIZE	A	SCALE	NA
2	INSULATOR	PTFE	NATURAL	1	UNLESS OTHERWISE SPECIFIED DIMENSIONS ARE IN MILLIMETERS. DIMENSIONS IN [] ARE IN INCHES AND FOR CUSTOMER REFERENCE ONLY.								
1	BODY/BARREL	BRASS	GOLD	1	UNLESS OTHERWISE SPECIFIED TOLERANCES FOR MILLIMETERS ARE: 0.5 - 8mm ± 0.20mm 8 - 30mm ± 0.40mm 30 - 120mm ± 0.50mm								
				UNLESS OTHERWISE SPECIFIED TOLERANCES FOR INCHES ARE: .020 - .315 ± 0.007" .315 - 1.180 ± 0.015" 1.180 - 4.724 ± 0.020"									

Mouser Electronics

Authorized Distributor

Click to View Pricing, Inventory, Delivery & Lifecycle Information:

[Amphenol:](#)

[132194](#)