

PRODUCT NUMBER
98414-XXX-XX-XXXXL

RoHS COMPATIBLE, SEE NOTE 8

PLATING: POLARIZATION, SEE NOTE 7
S = 0.39µm GOLD/GXT ON CONTACT AREA
2µm MIN MATTE TIN ON TAIL
G = 0.76µm GOLD/GXT ON CONTACT AREA
2µm MIN MATTE TIN ON TAIL
F = GOLD FLASH ON CONTACT AREA
2µm MIN MATTE TIN ON TAIL
T = 2.0-6.0µm FULL MATTE TIN
1.27µm Ni MIN UNDERLAYER

PIN	POST	TAIL
04	4.00	2.00
06	4.00	2.50
08	4.00	3.10
10	4.00	3.70

NOTES:
1. MATERIAL HOUSING: HIGH TEMP. THERMOPLASTIC UL-94V0
- = STANDARD COLOR CREAM
B = OPTIONAL COLOR BLACK

2. MATERIAL TERMINAL: COPPER ALLOY
3. TO DETERMINE DIMENSIONS:
N = NUMBER OF POSITIONS PER ROW
4. 7N MIN. PIN RETENTION IN EITHER DIRECTION.
5. PACKAGING:
= STANDARD PACKAGING IN POLYBAGS
- = POLYBAGS PACKAGING WHEN POLARISATION FEATURE APPLICABLE
B = TUBE WITH PICK-UP CAP FOR 12 UP TO 50 POS
U = TUBE AVAILABLE FROM 06 TO 50 POS
UV = TUBE WITHOUT PICK UP CAP FOR CUSTOMER DEDICATED PART
A = TAPE & REEL WITH PICK UP CAP
AV = TAPE & REEL WITH PICK UP CAP FOR CUSTOMER DEDICATED PART
KV = TAPE & REEL WITHOUT PICK UP CAP FOR CUSTOMER DEDICATED PART

6. DIM "C" = (N x 2) + 1.4
EXAMPLE: N = 7
DIM "C" = (7 x 2) + 1.4 = 15.4 mm

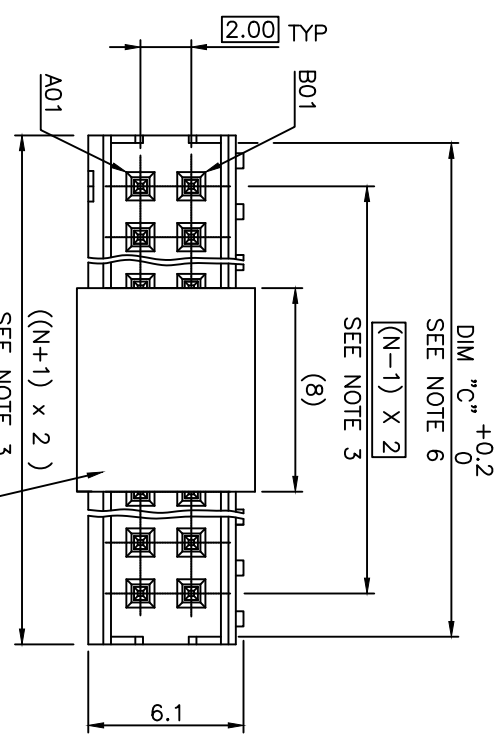
7. FOR POLARIZATION, SPECIFIED PIN
EXAMPLE: A03 = ROW A, POSITION 03 TO OMIT PIN
OMIT FROM PRODUCT NUMBER IF THIS FEATURE IS NOT APPLICABLE.

8. RoHS COMPATIBLE PRODUCT SPECIFICATIONS

a - PLATING:
- "LF" MEANS THE PRODUCT IS LEAD-FREE,
2µm MINIMUM MATTE TIN OVER 1.27µm
MINIMUM NICKEL UNDERPLATE.

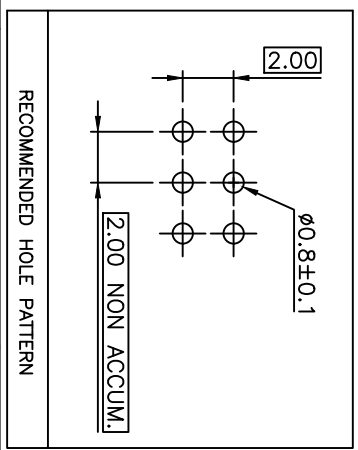
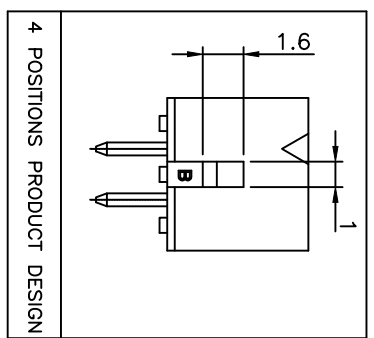
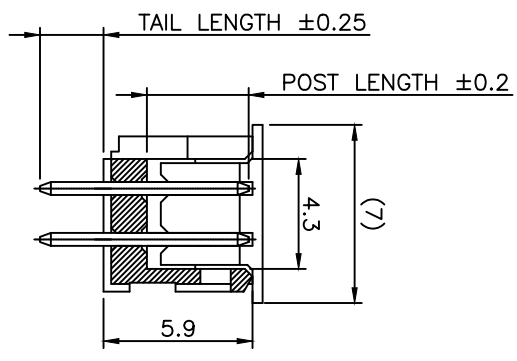
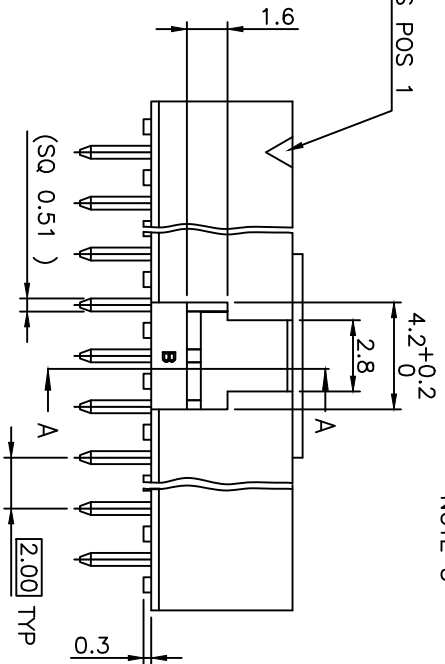
b - MANUFACTURING PROCESS COMPATIBILITY
- THE HOUSING WILL WITHSTAND EXPOSURE TO 260°C PEAK
TEMPERATURE FOR 30 SECONDS MAX IN A CONVECTION,
INFRARED, OR VAPOR PHASE OR REFLOW OVEN
- THE HOUSING WILL WITHSTAND EXPOSURE TO 260°C ±5°C
SOLDER BATH TEMPERATURE FOR 5 SECONDS IN A WAVE
SOLDER APPLICATION WITH A 1.6mm MIN THICK CIRCUIT BOARD.

c - LABELING:
- MEETS PACKAGING SPECS AS PER GS-14-920
d - THIS PRODUCT MEETS EUROPEAN DIRECTIVES
AND OTHER COUNTRY REGULATIONS AS DESCRIBED
IN GS-47-0004

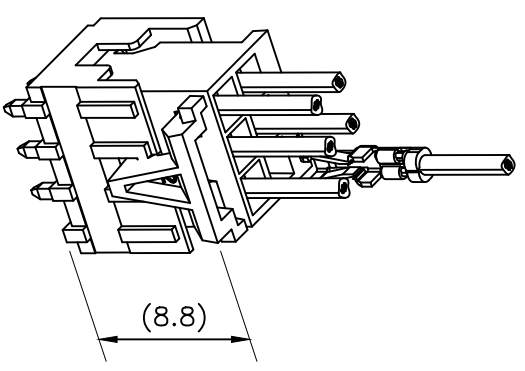
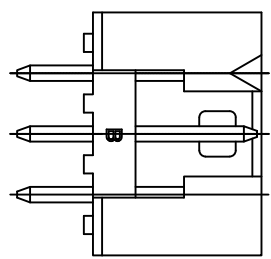
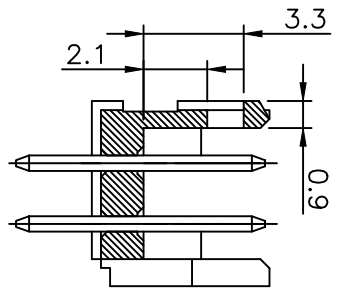
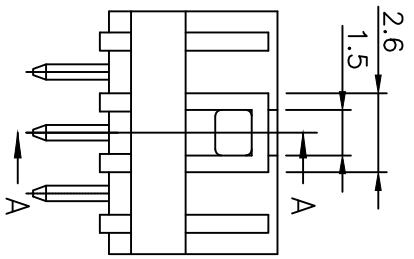


INDICATES POS 1

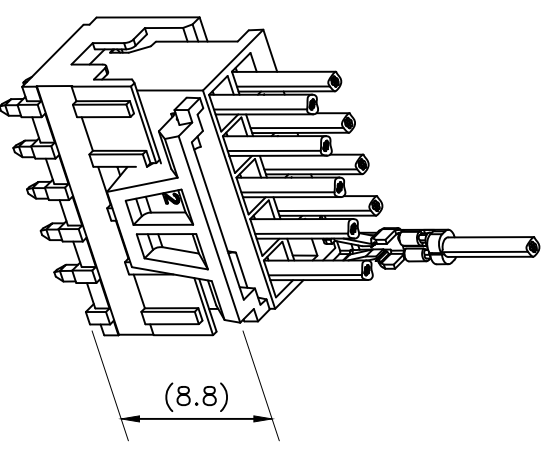
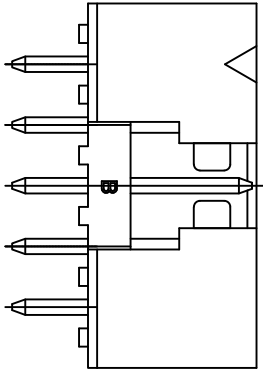
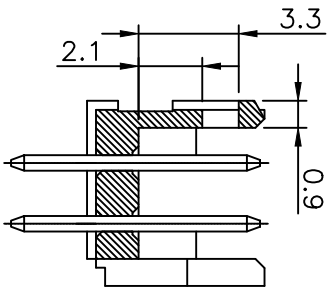
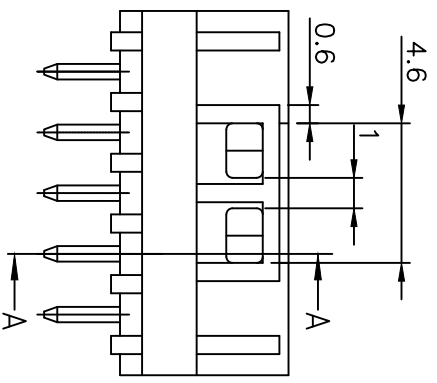
PICK UP CAP OPTION
NOTE 5



mat'l. code	SEE NOTES	surface	tolerance	projection	product family			
thr	ecn no	dr	date	ISO 1302	ISO 406	ISO 150	mm	title
X	F-39558	DDE	21.01.07	tolerances unless otherwise specified	XX ±0.3	XX ±0.13	mm	SHR HEADER
S	B-19190	LMU	14.10.24	linear	K,XXX ±0.05	scale 1:1	mm	2.00 VERTICAL TMT
T	B-19797	AMA	14.12.16	dr	L,LMULIN	04.09.27	mm	98414
U	B-19988	LMU	15.01.13	engr	J,COMPAGON	04.09.27	mm	sheet 1 of 2 size
V	F-34383	LMU	19.07.30	chr	JM,C	04.09.27	mm	A3
W	F-34619	DDE	19.08.20	qppd			mm	CUSTOMER Drawing
sheet	revision	X	B					
index	sheet	1	2					



2x3 POS AND 2x4 POS CONFIGURATION
NO LATCHING AVAILABLE FOR 2x2 POS



2x5 POS UP TO 2x25 POS CONFIGURATION

LATCHING FEATURES WHEN USED IN COMBINATION
WITH ACTIVE LATCH HOUSING 10073599

mat'l. code		SEE NOTES		surface	tolerance	projection	product family
ISO 1302	ISO 406	ISO 100	MINITEX	ISO 1302	ISO 406	ISO 100	MINITEX
tolerances unless otherwise specified	tolerance	projection	product family	ISO 1302	ISO 406	ISO 100	MINITEX
tr	ecr no	dr	date	angles	linear	mm	title
A	F08-0113	LMLU	08.01.17	XX ±0.3	XX ±0.13	mm	SHR HEADER
B	F-39558	DDE	21.01.07	XXXX ±0.05	XXXX ±0.05	scale 1:1	2.00 VERTICAL TMT
sheet	revision	dr	engr	chr	appd	JM.C	98414
index	sheet						CUSTOMER Drawing
							sheet 2 of - size
							A3