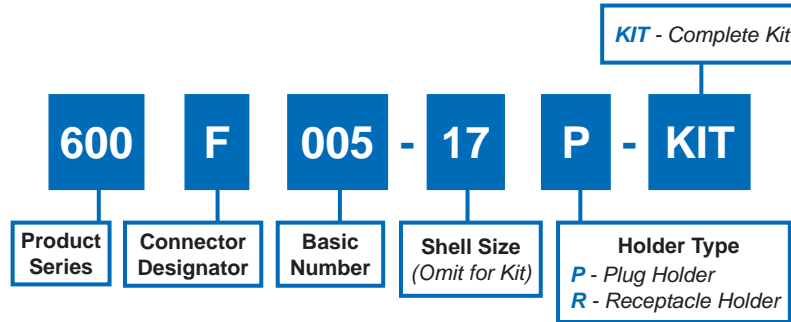
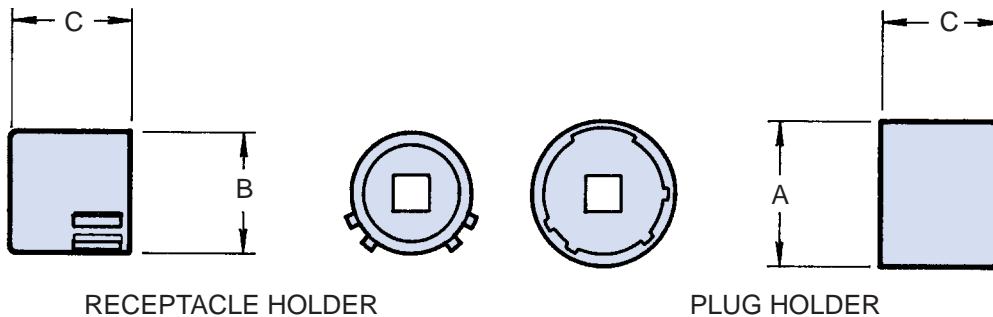


**600F005**  
**Plug and Receptacle Holder**  
 MIL-DTL-27599, MIL-DTL-38999 Series I



**NO POLARIZATION REQUIRED**



**TABLE I: Dash Number, Torque and Dimensions**

Dash No.	Torque Max (In/lbs)	A Dia Max	B Dia Max	C Dim Max
09	40	.577 (14.7)	.438 (11.1)	1.031 (26.2)
11	40	.709 (18.0)	.566 (14.4)	1.031 (26.2)
13	40	.829 (21.1)	.678 (17.2)	1.031 (26.2)
15	40	.954 (24.2)	.803 (20.4)	1.031 (26.2)
17	40	1.107 (28.1)	.928 (23.6)	1.031 (26.2)
19	40	1.190 (30.2)	1.033 (26.2)	1.031 (26.2)
21	80	1.315 (33.4)	1.158 (29.4)	1.031 (26.2)
23	80	1.440 (36.6)	1.283 (32.6)	1.031 (26.2)
25	80	1.565 (39.8)	1.408 (35.8)	1.031 (26.2)

APPLICATION NOTES
1. Metric dimensions (mm) are indicated in parentheses.
2. Material: Case hardened carbon steel with electroless nickel finish.
3. Receptacle and plug holder drives: 1/4" - Shell sizes 08, 10, 12; 3/8" - Shell sizes 14 and up.

Dimensions in inches (millimeters) and are subject to change without notice.

# Mouser Electronics

Authorized Distributor

Click to View Pricing, Inventory, Delivery & Lifecycle Information:

## Glenair:

[600F005-11P](#) [600F005-11R](#) [600F005-15P](#) [600F005-15R](#) [600F005-17P](#) [600F005-17R](#) [600F005-21R](#) [600F005-19P](#) [600F005-09P](#) [600F005-25P](#) [600F005R-KIT](#) [600F005-23R](#) [600F005P-KIT](#) [600F005-19R](#) [600F005-09R](#) [600F005-21P](#) [600F005-13R](#) [600F005-25R](#) [600F005-13P](#) [600F005-23P](#) [600F001](#)