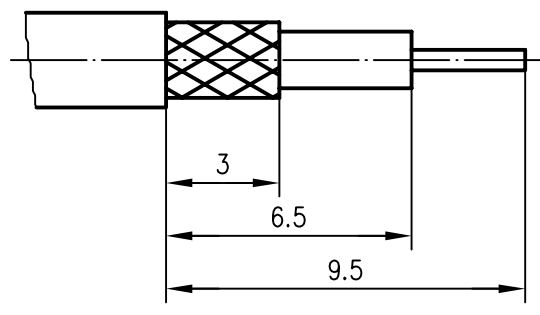
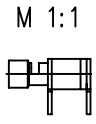


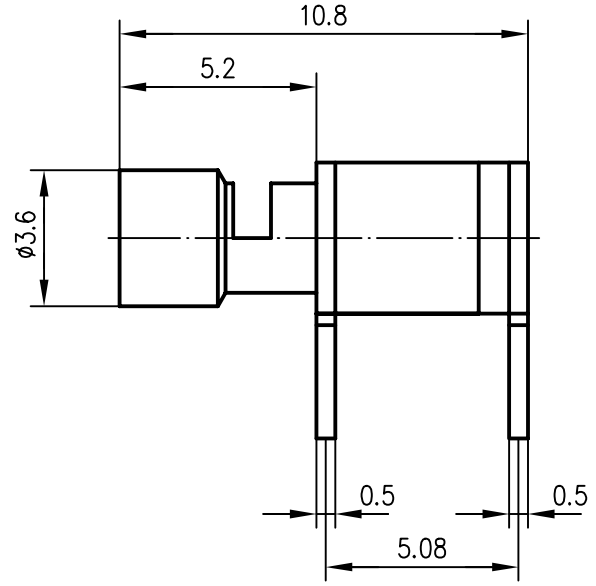
Abisoliermaße / stripping instruction



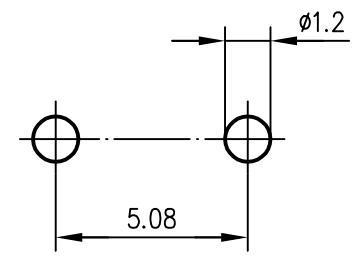
Isolierung / insulator



Kabel / cable



Montagebohrungen / panel piercings



Metallteile / metal parts CuZn39Pb3


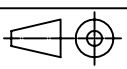
ⓑ Cu1-2Ni1-2Sn3-6 matt, lötlbar nach / solderable to IEC 60068-2-20

PTFE

ⓑ

ⓐ G 7: KX 22A, KX 3B, RG-174/U, RG-188A/U, RG-316/U; RG-179B/U; RG-187A/U

M 1:1

b	16399	22.04.05	MA	1995	Datum/date	Name/name	Werkstoff/ material
				gez./drawn	27.09.	HM	
a	6089	06.11.95	BI	gepr./appr.	04.10.95	PU	Oberfläche/ finish
				Norm/stand.			
				Maßstab/scale	Benennung/title		
				5:1 (1:1)	Kabelwinkelanschluss Angle Cable Terminator		
				untol. Maße/ dim. without tolerances according to	Untert./doc.type	Zeichnungsnr./drawing no.	 Maße/dimensions: mm
					K	H01000A0207	
				Ersatz für/ replaces			Original: DIN A4