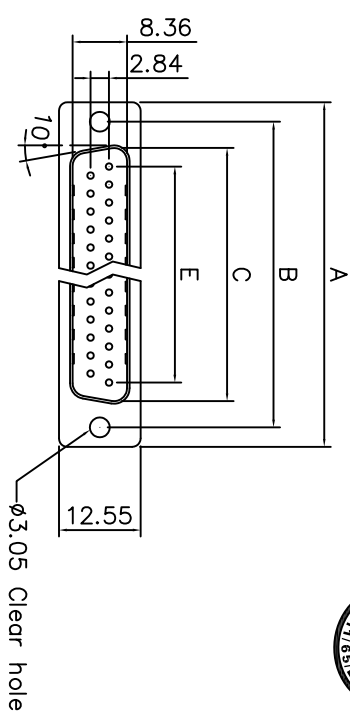
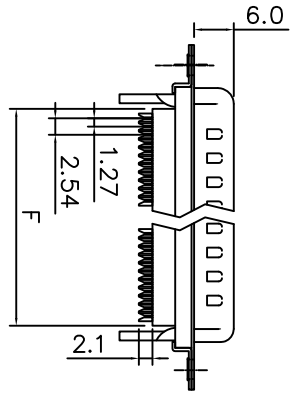
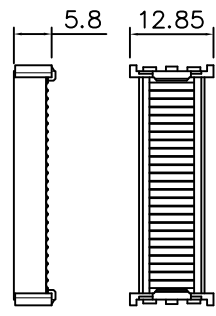


This document is the property of Amphenol Corporation and is delivered on the understanding that it is not to be retransmitted, reproduced, or used in any way without the prior consent, and that no right is granted to disclose or to use any information in this document.

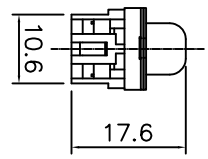
Customer drawing



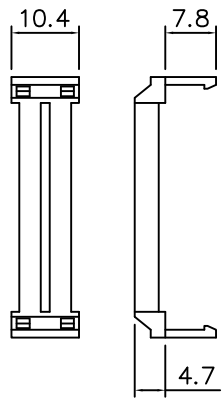
Cover



Without Insulator Support



Strain Relief



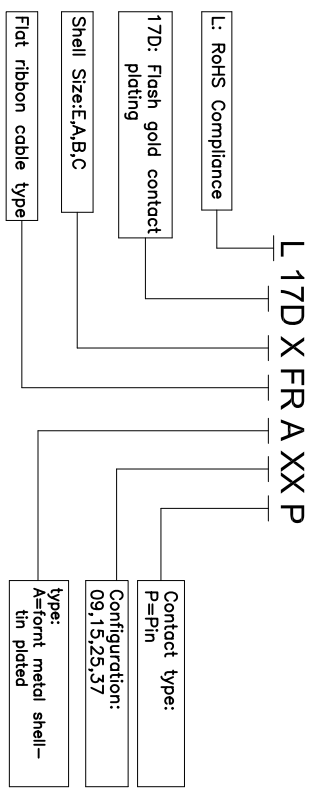
REVISONS				
S/N	EN	DESCRIPTION	DATE	APPROVED
1	HK--	First Release Drawing	12/23/09	IP
2	HK--	Update the Drawing	08/13/13	IP

D-SUB TECHNICAL DATA

SHELL : Steel, 100u" Tin Over 50u" min nickel over 50u" min Copper
 BODY : Glass-Filled Thermoplastic PBT,UL94V-0,Color Black.
 CONTACTS : Copper alloy
 Gold flash over 50u" nickel on mating area
 100u" tin over 50u" nickel on solder area
 ELECTRICAL : Voltage rating 250 VAC/RMS
 Current Rating :3 AMP
 Withstanding Voltage >1000 VAC RMS
 Insulation resistance >1000 M Ohms
 Contact resistance 20 mOhms max

MARKING : Amphenol---(Series No.)
 Commercial reference
 Manufacturing date

PRODUCT CODE



Dimensions					
Positions	A	B	C	E	F
9	30.81	24.99	16.92	11.08	13.10
15	39.20	33.30	25.25	19.39	20.70
25	53.05	47.04	38.96	33.24	33.68
37	69.40	63.50	55.42	49.86	50.30

UNLESS OTHERWISE SPECIFIED		APPROVAL		DATE	
TOLERANCES	AS SHOWN	DATE	DATE	DATE	DATE
0.5	0.50	08/23/09	08/23/09	08/23/09	08/23/09
0.30	0.30				
0.20	0.20				
ANGLES	5°				
FOR MATERIALS AND FINISHES					
REMOVE SHARP EDGES					
DIMENSIONS					
INCHES					
MILLIMETERS					
DRAWING FILE :					
ANGLE OF PROJECTION					
TITLE					
IDC flat cable,DFR series					
Amphenol East Asia Limited					
SIZE: DRAWING NO. A4 C L17DXFRAXXP					
SCALE: NONE					
SHEET 1 OF 1					