

TECHNICAL CHARACTERISTICS

MATERIAL
 INSULATOR: PA6/66
 FLAMMABILITY RATING: UL94V0
 COLOR: GREEN
 CONTACT / PLATING: COPPER ALLOY / Ni+Sn

ENVIRONMENTAL
 OPERATING TEMPERATURE: -30°C UP TO +120°C
 COMPLIANCE: LEAD FREE AND ROHS

| | | |
|-------------------------|-------------|---------|
| ELECTRICAL | UL | VDE |
| CURRENT RATING: | 20 A | 6,3 A |
| WORKING VOLTAGE: | 250 VAC | 250 VAC |
| WITHSTANDING VOLTAGE: | 1,5 KV | 1,5 KV |
| RATED POWER ACCEPTANCE: | --- | 1,6 W |
| PROTECTION CLASS: | I o II | |
| CONTACT RESISTANCE: | 5/10 mΩ MAX | |

STANDARD

| | |
|--------------------|-----------------|
| CERTIFIED: E157417 | CAT. N°: PTF/76 |
| CERTIFIED: 129302 | TYPE: PTF/76 |

MECHANICAL

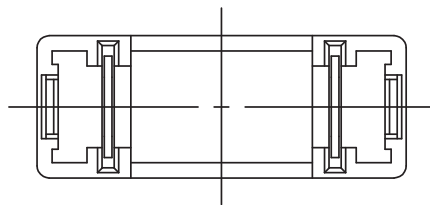
FUSE-LINK: 5x20 mm
 PROTECTION RATE: IP00
 SHOCKSAFE CATEGORY: PC1

SOLDERING

JEDEC LEAD FREE WAVE SOLDERING

PACKAGING

BOX



RoHS Compliant

| | | | |
|-----|-----------|-----------------|----|
| G | | | |
| F | | | |
| E | | | |
| D | 14-MAR-17 | CURRENT RATING | AK |
| C | 30-JUN-15 | SHOCKSAFE | AK |
| B | 01-APR-15 | PROTECTION RATE | QL |
| A | 11-SEP-14 | PDF | AK |
| REV | DATE | FILE | BY |

PROJECTION:

GENERAL TOLERANCE
 ±0,1



APPROVAL: FBr

UNIT: MM
 SCALE:
 SHEET: 1/2
 DRAW: AK

DESCRIPTION: FUSEHOLDER BLOCKS - PCB - CLIP COVER - THT - WR-FSH
 WERI PART NO: 696 106 003 002

SIZE
A4

1

2

3

4

5

Cautions and Warnings:

This electronic component is designed and developed with the intention for use in general electronics equipments.

Before incorporating the components into any equipments in the field such as aerospace, aviation, nuclear control, submarine, transportation, (automotive control, train control, ship control), transportation signal, disaster prevention, medical, public information network etc. where higher safety and reliability are especially required or if there is possibility of direct damage or injury to human body, Würth Elektronik must be asked for a written approval.

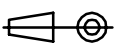

In addition, even electronic component in general electronic equipments, when used in electrical circuits that require high safety, reliability functions or performance, the sufficient reliability evaluation-check for the safety must be performed before by the user before usage.

A

B

C

RoHS Compliant

| | | | | | | | |
|-----|-----------|------|----|--|---|--|-------------------|
| G | | | | PROJECTION:  | GENERAL TOLERANCE .X = +/- 0.2 .XX = +/- 0.15 |  WÜRTH ELEKTRONIK | |
| F | | | | | | | |
| E | | | | | | | |
| D | | | | | | | |
| C | | | | APPROVAL: JC | UNIT: MM | DESCRIPTION: DISCLAIMER | SIZE A4 |
| B | | | | | SCALE: | | |
| A | 10-SEP-14 | PDF | QL | | SHEET: 2/2 | WERI PART NO: DISCLAIMER | |
| REV | DATE | FILE | BY | | DRAW: QL | | |

D

Mouser Electronics

Authorized Distributor

Click to View Pricing, Inventory, Delivery & Lifecycle Information:

[Wurth Elektronik:](#)

[696106003002](#)