



**10BASE-T1S  
Ethernet PHY Transceiver  
LAN8670 RMII Evaluation Board  
(EVB-LAN8670-RMII)**

**User's Guide**

Note: This User's Guide, although specific to the LAN8670, can provide some useful information for those implementing LAN8671 and LAN8672 within their designs. Please contact [Microchip Support and Sales](#) for additional evaluation board information and for further support with your evaluation needs.

---

**Note the following details of the code protection feature on Microchip devices:**

- Microchip products meet the specifications contained in their particular Microchip Data Sheet.
- Microchip believes that its family of products is secure when used in the intended manner and under normal conditions.
- There are dishonest and possibly illegal methods being used in attempts to breach the code protection features of the Microchip devices. We believe that these methods require using the Microchip products in a manner outside the operating specifications contained in Microchip's Data Sheets. Attempts to breach these code protection features, most likely, cannot be accomplished without violating Microchip's intellectual property rights.
- Microchip is willing to work with any customer who is concerned about the integrity of its code.
- Neither Microchip nor any other semiconductor manufacturer can guarantee the security of its code. Code protection does not mean that we are guaranteeing the product is "unbreakable". Code protection is constantly evolving. We at Microchip are committed to continuously improving the code protection features of our products. Attempts to break Microchip's code protection feature may be a violation of the Digital Millennium Copyright Act. If such acts allow unauthorized access to your software or other copyrighted work, you may have a right to sue for relief under that Act.

---

Information contained in this publication is provided for the sole purpose of designing with and using Microchip products. Information regarding device applications and the like is provided only for your convenience and may be superseded by updates. It is your responsibility to ensure that your application meets with your specifications.

THIS INFORMATION IS PROVIDED BY MICROCHIP "AS IS". MICROCHIP MAKES NO REPRESENTATIONS OR WARRANTIES OF ANY KIND WHETHER EXPRESS OR IMPLIED, WRITTEN OR ORAL, STATUTORY OR OTHERWISE, RELATED TO THE INFORMATION INCLUDING BUT NOT LIMITED TO ANY IMPLIED WARRANTIES OF NON-INFRINGEMENT, MERCHANTABILITY, AND FITNESS FOR A PARTICULAR PURPOSE OR WARRANTIES RELATED TO ITS CONDITION, QUALITY, OR PERFORMANCE.

IN NO EVENT WILL MICROCHIP BE LIABLE FOR ANY INDIRECT, SPECIAL, PUNITIVE, INCIDENTAL OR CONSEQUENTIAL LOSS, DAMAGE, COST OR EXPENSE OF ANY KIND WHATSOEVER RELATED TO THE INFORMATION OR ITS USE, HOWEVER CAUSED, EVEN IF MICROCHIP HAS BEEN ADVISED OF THE POSSIBILITY OR THE DAMAGES ARE FORESEEABLE. TO THE FULLEST EXTENT ALLOWED BY LAW, MICROCHIP'S TOTAL LIABILITY ON ALL CLAIMS IN ANY WAY RELATED TO THE INFORMATION OR ITS USE WILL NOT EXCEED THE AMOUNT OF FEES, IF ANY, THAT YOU HAVE PAID DIRECTLY TO MICROCHIP FOR THE INFORMATION. Use of Microchip devices in life support and/or safety applications is entirely at the buyer's risk, and the buyer agrees to defend, indemnify and hold harmless Microchip from any and all damages, claims, suits, or expenses resulting from such use. No licenses are conveyed, implicitly or otherwise, under any Microchip intellectual property rights unless otherwise stated.

**Trademarks**

The Microchip name and logo, the Microchip logo, Adaptec, AnyRate, AVR, AVR logo, AVR Freaks, BesTime, BitCloud, chipKIT, chipKIT logo, CryptoMemory, CryptoRF, dsPIC, FlashFlex, flexPWR, HELDO, IGLOO, JukeBlox, KeeLoq, Kleer, LANCheck, LinkMD, maXStylus, maXTouch, MediaLB, megaAVR, Microsemi, Microsemi logo, MOST, MOST logo, MPLAB, OptoLyzer, PackeTime, PIC, picoPower, PICSTART, PIC32 logo, PolarFire, Prochip Designer, QTouch, SAM-BA, SenGenuity, SpyNIC, SST, SST Logo, SuperFlash, Symmetricom, SyncServer, Tachyon, TimeSource, tinyAVR, UNI/O, Vectron, and XMEGA are registered trademarks of Microchip Technology Incorporated in the U.S.A. and other countries.

AgileSwitch, APT, ClockWorks, The Embedded Control Solutions Company, EtherSynch, FlashTec, Hyper Speed Control, HyperLight Load, IntelliMOS, Libero, motorBench, mTouch, Powermite 3, Precision Edge, ProASIC, ProASIC Plus, ProASIC Plus logo, Quiet-Wire, SmartFusion, SyncWorld, Temux, TimeCesium, TimeHub, TimePictra, TimeProvider, WinPath, and ZL are registered trademarks of Microchip Technology Incorporated in the U.S.A.

Adjacent Key Suppression, AKS, Analog-for-the-Digital Age, Any Capacitor, AnyIn, AnyOut, Augmented Switching, BlueSky, BodyCom, CodeGuard, CryptoAuthentication, CryptoAutomotive, CryptoCompanion, CryptoController, dsPICDEM, dsPICDEM.net, Dynamic Average Matching, DAM, ECAN, Espresso T1S, EtherGREEN, IdealBridge, In-Circuit Serial Programming, ICSP, INICnet, Intelligent Paralleling, Inter-Chip Connectivity, JitterBlocker, maxCrypto, maxView, memBrain, MIndi, MiWi, MPASM, MPF, MPLAB Certified logo, MPLIB, MPLINK, MultiTRAK, NetDetach, Omniscient Code Generation, PICDEM, PICDEM.net, PICkit, PICtail, PowerSmart, PureSilicon, QMatrix, REAL ICE, Ripple Blocker, RTAX, RTG4, SAM-ICE, Serial Quad I/O, simpleMAP, SimpliPHY, SmartBuffer, SMART-I.S., storClad, SQI, SuperSwitcher, SuperSwitcher II, Switchtec, SynchroPHY, Total Endurance, TSHARC, USBCheck, VariSense, VectorBlox, VeriPHY, ViewSpan, WiperLock, XpressConnect, and ZENA are trademarks of Microchip Technology Incorporated in the U.S.A. and other countries.

SQTP is a service mark of Microchip Technology Incorporated in the U.S.A.

The Adaptec logo, Frequency on Demand, Silicon Storage Technology, and Symmcom are registered trademarks of Microchip Technology Inc. in other countries.

GestIC is a registered trademark of Microchip Technology Germany II GmbH & Co. KG, a subsidiary of Microchip Technology Inc., in other countries.

All other trademarks mentioned herein are property of their respective companies.

© 2021, Microchip Technology Incorporated, All Rights Reserved.

ISBN: 978-1-5224-8545-2

For information regarding Microchip's Quality Management Systems, please visit [www.microchip.com/quality](http://www.microchip.com/quality).

**Table of Contents**

<b>Preface</b> .....	<b>5</b>
Introduction.....	5
Intended Use .....	5
Document Layout .....	6
Term Definitions .....	6
Customer Support .....	6
Document Revision History .....	6
<b>Chapter 1. Introduction</b>	
1.1 Overview .....	7
1.2 Product Features .....	8
<b>Chapter 2. Board Details</b>	
2.1 Electrical Characteristics .....	9
2.2 Connectors .....	9
2.2.1 J1, J2 .....	9
2.2.2 J3 .....	10
2.2.3 J4 .....	10
2.2.4 J6 .....	11
2.3 Jumpers .....	12
2.3.1 J7, J8 .....	12
<b>Chapter 3. Assembly Plan and Mechanical Dimensions</b>	
3.1 Top View and Mechanical Dimensions .....	13
3.2 Bottom View and Mechanical Dimensions .....	14
<b>List of Figures</b> .....	<b>15</b>
<b>List of Tables</b> .....	<b>17</b>
<b>Worldwide Sales and Service</b> .....	<b>18</b>

# EVB-LAN8670-RMII User's Guide

---

---

NOTES:

---

---

## Preface

---

---

### NOTICE TO CUSTOMERS

All documentation becomes dated, and this manual is no exception. Microchip tools and documentation are constantly evolving to meet customer needs, so some actual dialogs and/or tool descriptions may differ from those in this document. Please refer to our web site ([www.microchip.com](http://www.microchip.com)) to obtain the latest documentation available.

Documents are identified with a “DS” number. This number is located on the bottom of each page, in front of the page number. The numbering convention for the DS number is “DSXXXXA”, where “XXXX” is the document number and “A” is the revision level of the document.

## INTRODUCTION

This chapter contains general information that will be useful to know before using the EVB-LAN8670-RMII. Topics discussed in this chapter include:

- [Intended Use](#)
- [Document Layout](#)
- [Term Definitions](#)
- [Customer Support](#)
- [Document Revision History](#)

## INTENDED USE

This Microchip product is intended to be used for developing or testing control and sensor networks by persons with experience in this field of knowledge.

**Note:** The operation of this Microchip product is only admitted with original Microchip devices.  
Do not interfere with the product's original state. Otherwise, user safety, faultless operation and electromagnetic compatibility are not ensured.  
To avoid electric shocks and short circuits use this device only in an appropriate environment.  
This open device may exceed the limits of electromagnetic interference.  
Electromagnetic compatibility can only be achieved if the equipment is built into an appropriate housing.

# EVB-LAN8670-RMII User's Guide

---

---

## DOCUMENT LAYOUT

This user's guide describes how to use the EVB-LAN8670-RMII. The document is organized as follows:

- [Chapter 1, Introduction](#) – This chapter introduces the EVB-LAN8670-RMII. It shows an illustration of the board. It furthermore lists the product features of the board.
- [Chapter 2, Board Details](#) – This chapter gives an overview of jumpers, connectors and electrical characteristics.
- [Chapter 3, Assembly Plan and Mechanical Dimensions](#) – This chapter shows the assembly plan (top and bottom views) and the mechanical dimensions of the board.

## TERM DEFINITIONS

This user's guide uses the following term definitions:

Term	Description
RMII	Reduced Media Independent Interface
SoC	System on Chip

## CUSTOMER SUPPORT

Users of Microchip products can receive assistance through several channels:

- Distributor or Representative
- Local Sales Office
- Field Application Engineer (FAE)
- Technical Support

Customers should contact their distributor, representative or field application engineer (FAE) for support. Local sales offices are also available to help customers. A listing of sales offices and locations is included in the back of this document.

Technical support is available through the web site at:

<http://www.microchip.com/support>.

## DOCUMENT REVISION HISTORY

### Revision B (July 2021)

- Removed document status and confidential ranking

### Revision A (June 2021)

- Initial release of this document

---

---

## Chapter 1. Introduction

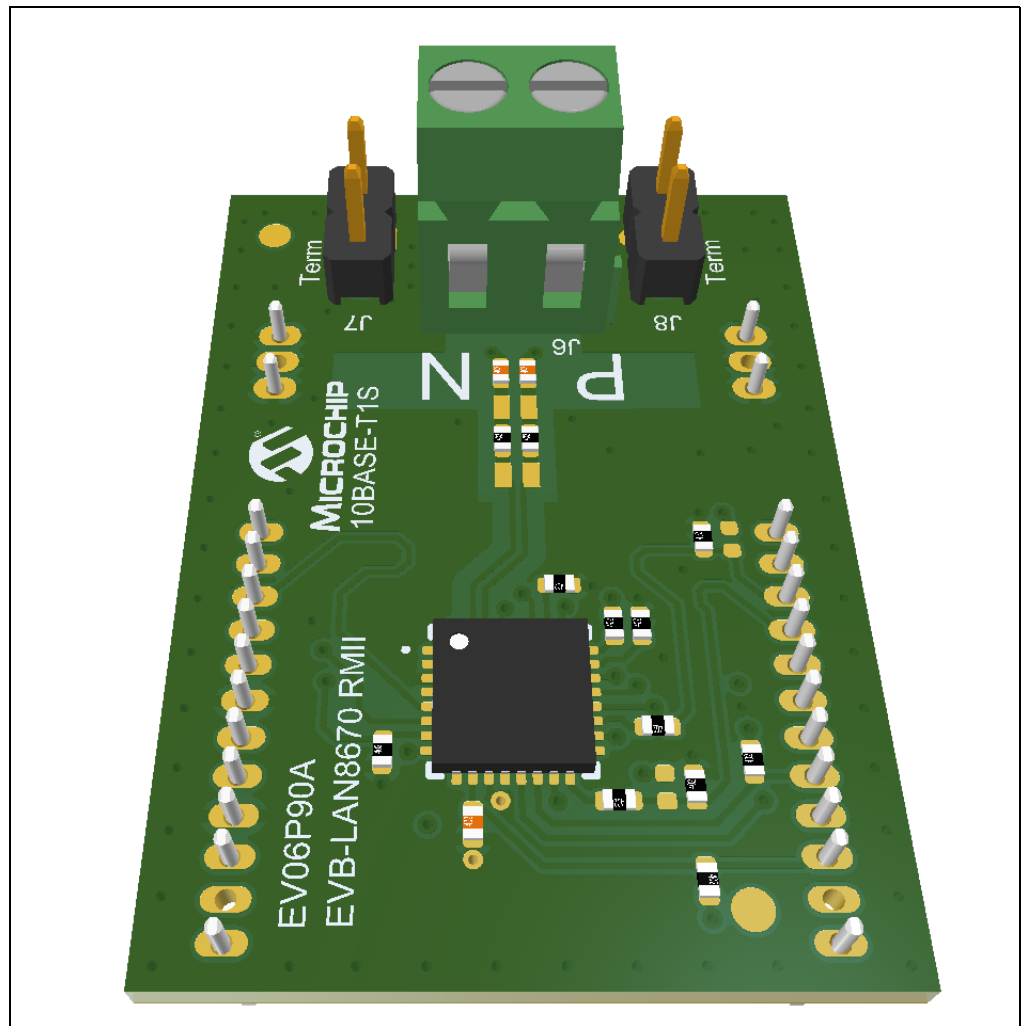
---

---

### 1.1 OVERVIEW

The EVB-LAN8670-RMII enables Ethernet communication with the SAM E54 Curiosity Ultra Development board or the SAM E70 Xplained Ultra Evaluation Kit; however, it can also be used with other Microchip development hardware.

**FIGURE 1-1: EVB-LAN8670-RMII**



## 1.2 PRODUCT FEATURES

- RMII to 10BASE-T1S interface card
- 10 Mbit/s short-reach single-pair Ethernet physical layer transceiver
  - Half-duplex point-to-point link segments
  - Half-duplex multidrop mixing segments
- Reduced Media Independent Interface (RMII)
- Connects to MCUs offering RMII
- Connects to Microchip MCU evaluation boards
- Physical Layer Collision Avoidance (PLCA)
- Single 3.3V power supply
- Includes the Bus Interface Network (analog front end)
- Screw terminal for direct cable connection (no connector needed)
- Configurable on-board termination



## Chapter 2. Board Details

### 2.1 ELECTRICAL CHARACTERISTICS

Parameter	Min.	Typ.	Max.	Unit
Board Operating Voltage	3	3.3	3.6	V

### 2.2 CONNECTORS

Connectors (J1-J4) are mounted on the bottom side of the board. The connectors are used to connect the EVB-LAN8670-RMII to a base board<sup>1</sup> that supports the signals and pins as provided.

#### 2.2.1 J1, J2

**Type:** TMS-103-02-L-S, from Samtec

The connector pins are described in [Table 2-1](#).

**TABLE 2-1: J1, J2 – PIN DESCRIPTION**

Pin	Description
1, 2, 3	GND

1. Suitable base board examples include the: SAM E54 Curiosity Ultra Development board (<https://www.microchip.com/Developmenttools/ProductDetails/DM320210#additional-summary>) and the SAM E70 Xplained Ultra Evaluation Kit (<https://www.microchip.com/DevelopmentTools/ProductDetails/PartNO/DM320113>).

## 2.2.2 J3

**Type:** TMS-112-02-L-S, from Samtec

The connector pins are described in [Table 2-2](#).

**TABLE 2-2: J3 – PIN DESCRIPTION**

Pin	Description
1	TXEN
2	TXD0
3	TXD1
4, 5, 7, 11, 12	NC
6, 9	GND
8	CLK50M
10	3V3

## 2.2.3 J4

**Type:** TMS-112-02-L-S, from Samtec

The connector pins are described in [Table 2-3](#).

**TABLE 2-3: J4 – PIN DESCRIPTION**

Pin	Description
1, 2, 11, 12	NC
3	RXD1
4	RXD0
5	RXER
6	CRSDV
7	MDC
8	MDIO
9	IRQ_N
10	RESET_N

## 2.2.4 J6

This connector is mounted on the top side of the board. It is used as the interface to the network.

<b>Type:</b> 691214110002, fixed terminal block, from Würth Elektronik
--

The terminal pins are described in [Table 2-4](#).

**TABLE 2-4: J6 – PIN DESCRIPTION**

Pin	Description
Terminal 1	TRX_P
Terminal 2	TRX_N

## 2.3 JUMPERS

All jumpers are mounted on the top side of the board.

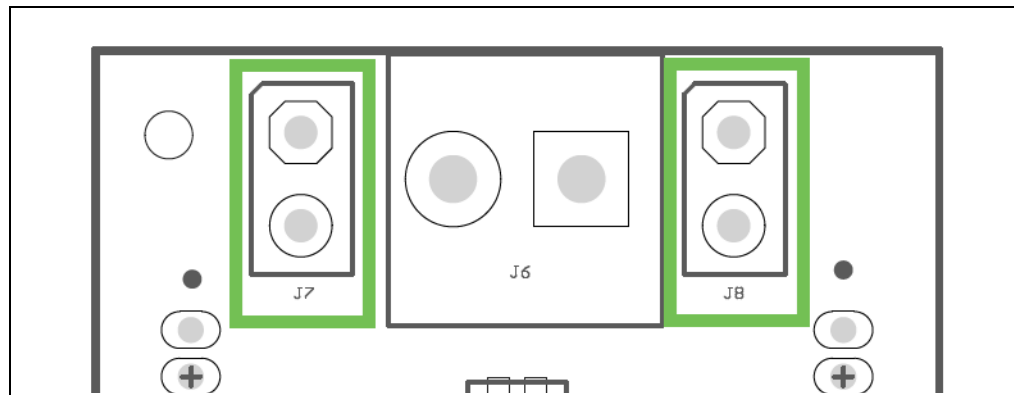
### 2.3.1 J7, J8

These jumpers are used for enabling 100 Ohm edge termination at the ends of a 10BASE-T1S segment.

**Note:** Both jumpers must be closed to enable edge termination.

Figure 2-1 highlights the jumpers.

**FIGURE 2-1: J7, J8 – JUMPER SETTING**

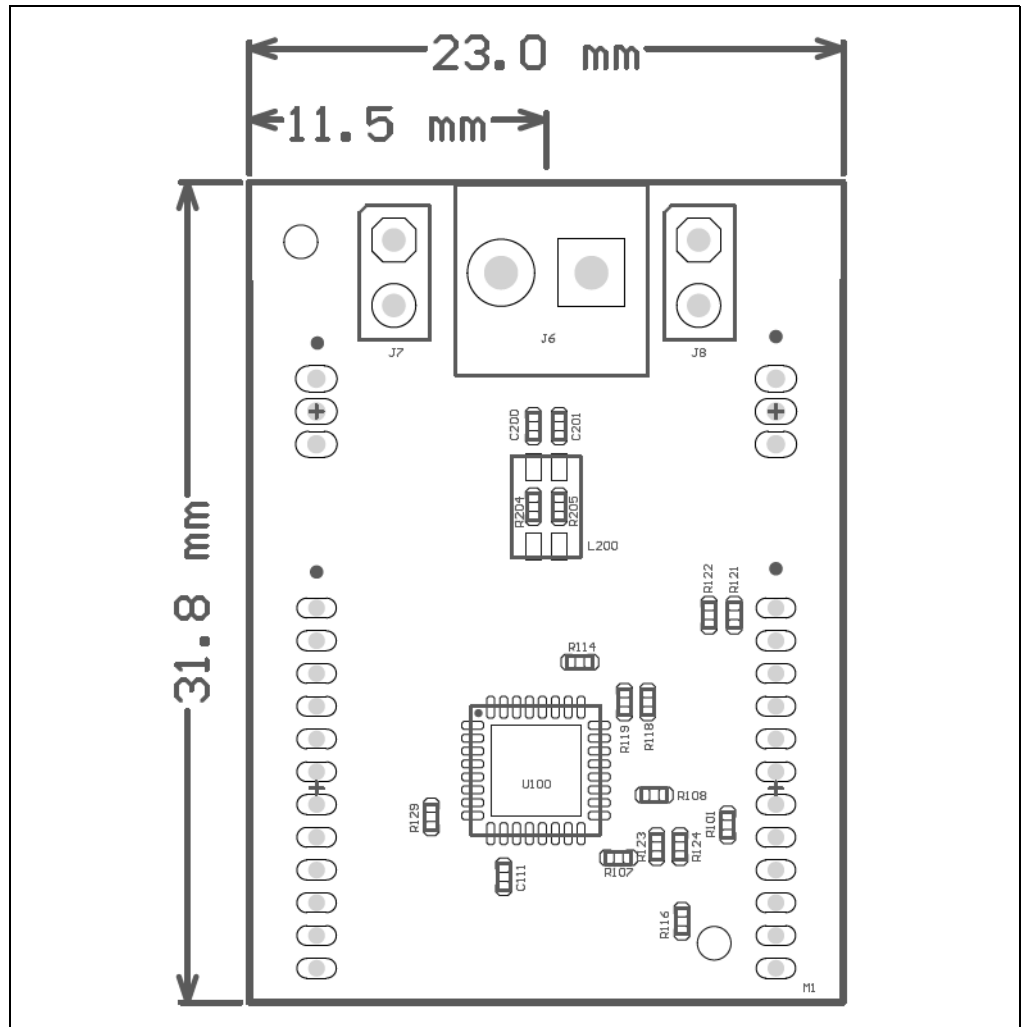


## Chapter 3. Assembly Plan and Mechanical Dimensions

### 3.1 TOP VIEW AND MECHANICAL DIMENSIONS

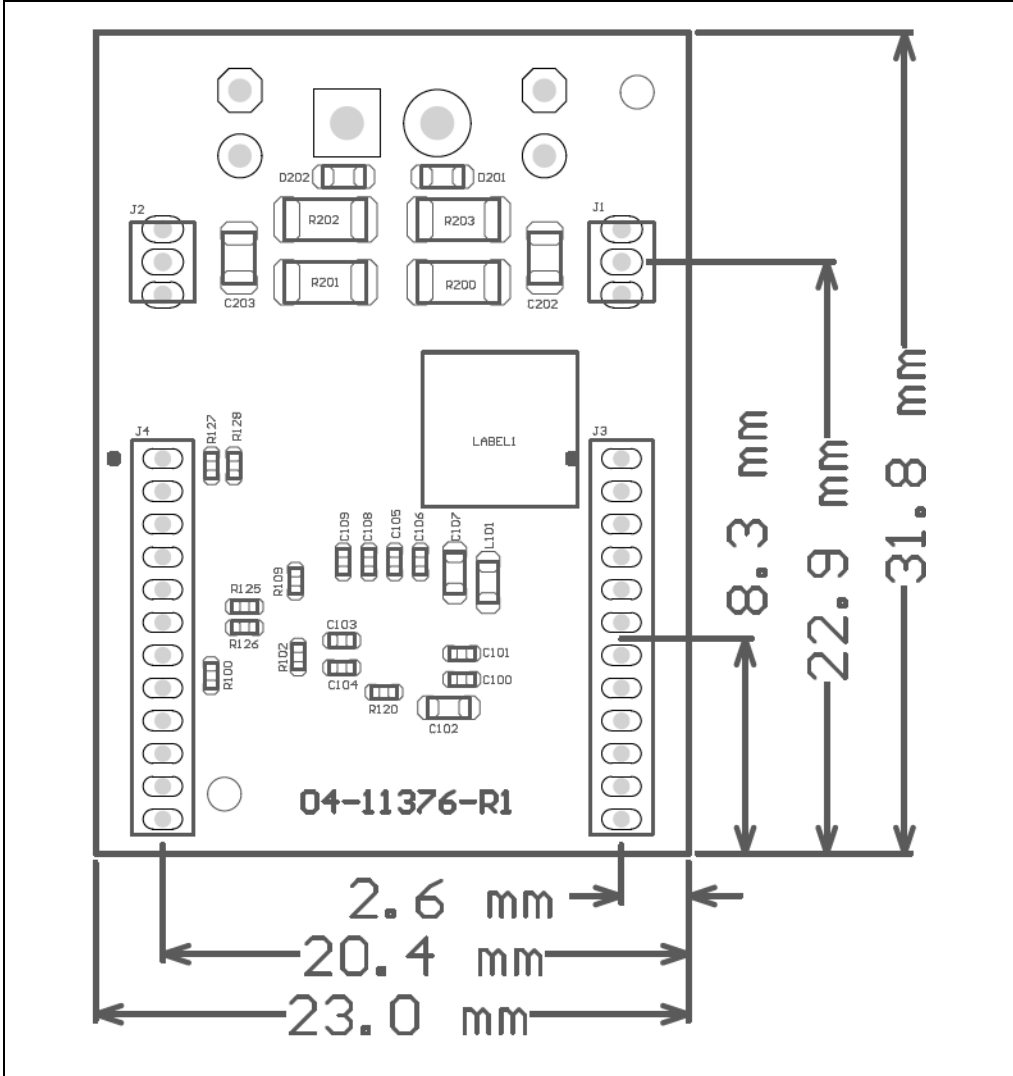
The mechanical dimensions are shown in [Figure 3-1](#) and [Figure 3-2](#).

**FIGURE 3-1: ASSEMBLY PLAN – TOP VIEW AND MECHANICAL DIMENSIONS**



## 3.2 BOTTOM VIEW AND MECHANICAL DIMENSIONS

FIGURE 3-2: ASSEMBLY PLAN – BOTTOM VIEW AND MECHANICAL DIMENSIONS



---

---

## List of Figures

---

---

Figure 1-1: EVB-LAN8670-RMII .....	7
Figure 2-1: J7, J8 – Jumper Setting .....	12
Figure 3-1: Assembly Plan – Top View and Mechanical Dimensions .....	13
Figure 3-2: Assembly Plan – Bottom View and Mechanical Dimensions .....	14

# EVB-LAN8670-RMII User's Guide

---

---

NOTES:





---

---

## List of Tables

---

---

Table 2-1: J1, J2 – Pin Description .....	9
Table 2-2: J3 – Pin Description .....	10
Table 2-3: J4 – Pin Description .....	10
Table 2-4: J6 – Pin Description .....	11



# MICROCHIP

## Worldwide Sales and Service

### AMERICAS

**Corporate Office**  
2355 West Chandler Blvd.  
Chandler, AZ 85224-6199  
Tel: 480-792-7200  
Fax: 480-792-7277  
Technical Support:  
<http://www.microchip.com/support>  
Web Address:  
[www.microchip.com](http://www.microchip.com)

#### Atlanta

Duluth, GA  
Tel: 678-957-9614  
Fax: 678-957-1455

#### Austin, TX

Tel: 512-257-3370

#### Boston

Westborough, MA  
Tel: 774-760-0087  
Fax: 774-760-0088

#### Chicago

Itasca, IL  
Tel: 630-285-0071  
Fax: 630-285-0075

#### Dallas

Addison, TX  
Tel: 972-818-7423  
Fax: 972-818-2924

#### Detroit

Novi, MI  
Tel: 248-848-4000

#### Houston, TX

Tel: 281-894-5983

#### Indianapolis

Noblesville, IN  
Tel: 317-773-8323  
Fax: 317-773-5453  
Tel: 317-536-2380

#### Los Angeles

Mission Viejo, CA  
Tel: 949-462-9523  
Fax: 949-462-9608  
Tel: 951-273-7800

#### Raleigh, NC

Tel: 919-844-7510

#### New York, NY

Tel: 631-435-6000

#### San Jose, CA

Tel: 408-735-9110  
Tel: 408-436-4270

#### Canada - Toronto

Tel: 905-695-1980  
Fax: 905-695-2078

### ASIA/PACIFIC

**Australia - Sydney**  
Tel: 61-2-9868-6733

**China - Beijing**  
Tel: 86-10-8569-7000

**China - Chengdu**  
Tel: 86-28-8665-5511

**China - Chongqing**  
Tel: 86-23-8980-9588

**China - Dongguan**  
Tel: 86-769-8702-9880

**China - Guangzhou**  
Tel: 86-20-8755-8029

**China - Hangzhou**  
Tel: 86-571-8792-8115

**China - Hong Kong SAR**  
Tel: 852-2943-5100

**China - Nanjing**  
Tel: 86-25-8473-2460

**China - Qingdao**  
Tel: 86-532-8502-7355

**China - Shanghai**  
Tel: 86-21-3326-8000

**China - Shenyang**  
Tel: 86-24-2334-2829

**China - Shenzhen**  
Tel: 86-755-8864-2200

**China - Suzhou**  
Tel: 86-186-6233-1526

**China - Wuhan**  
Tel: 86-27-5980-5300

**China - Xian**  
Tel: 86-29-8833-7252

**China - Xiamen**  
Tel: 86-592-2388138

**China - Zhuhai**  
Tel: 86-756-3210040

### ASIA/PACIFIC

**India - Bangalore**  
Tel: 91-80-3090-4444

**India - New Delhi**  
Tel: 91-11-4160-8631

**India - Pune**  
Tel: 91-20-4121-0141

**Japan - Osaka**  
Tel: 81-6-6152-7160

**Japan - Tokyo**  
Tel: 81-3-6880-3770

**Korea - Daegu**  
Tel: 82-53-744-4301

**Korea - Seoul**  
Tel: 82-2-554-7200

**Malaysia - Kuala Lumpur**  
Tel: 60-3-7651-7906

**Malaysia - Penang**  
Tel: 60-4-227-8870

**Philippines - Manila**  
Tel: 63-2-634-9065

**Singapore**  
Tel: 65-6334-8870

**Taiwan - Hsin Chu**  
Tel: 886-3-577-8366

**Taiwan - Kaohsiung**  
Tel: 886-7-213-7830

**Taiwan - Taipei**  
Tel: 886-2-2508-8600

**Thailand - Bangkok**  
Tel: 66-2-694-1351

**Vietnam - Ho Chi Minh**  
Tel: 84-28-5448-2100

### EUROPE

**Austria - Wels**  
Tel: 43-7242-2244-39  
Fax: 43-7242-2244-393

**Denmark - Copenhagen**  
Tel: 45-4485-5910  
Fax: 45-4485-2829

**Finland - Espoo**  
Tel: 358-9-4520-820

**France - Paris**  
Tel: 33-1-69-53-63-20  
Fax: 33-1-69-30-90-79

**Germany - Garching**  
Tel: 49-8931-9700

**Germany - Haan**  
Tel: 49-2129-3766400

**Germany - Heilbronn**  
Tel: 49-7131-72400

**Germany - Karlsruhe**  
Tel: 49-721-625370

**Germany - Munich**  
Tel: 49-89-627-144-0  
Fax: 49-89-627-144-44

**Germany - Rosenheim**  
Tel: 49-8031-354-560

**Israel - Ra'anana**  
Tel: 972-9-744-7705

**Italy - Milan**  
Tel: 39-0331-742611  
Fax: 39-0331-466781

**Italy - Padova**  
Tel: 39-049-7625286

**Netherlands - Drunen**  
Tel: 31-416-690399  
Fax: 31-416-690340

**Norway - Trondheim**  
Tel: 47-7288-4388

**Poland - Warsaw**  
Tel: 48-22-3325737

**Romania - Bucharest**  
Tel: 40-21-407-87-50

**Spain - Madrid**  
Tel: 34-91-708-08-90  
Fax: 34-91-708-08-91

**Sweden - Gothenberg**  
Tel: 46-31-704-60-40

**Sweden - Stockholm**  
Tel: 46-8-5090-4654

**UK - Wokingham**  
Tel: 44-118-921-5800  
Fax: 44-118-921-5820