

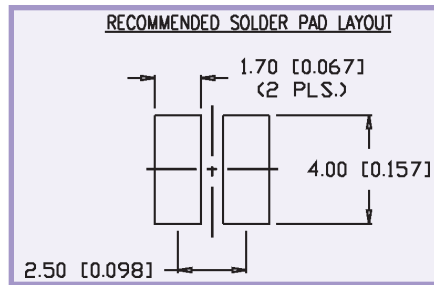
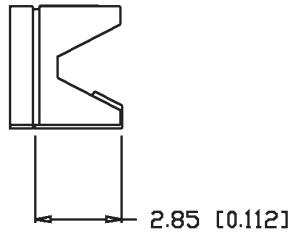
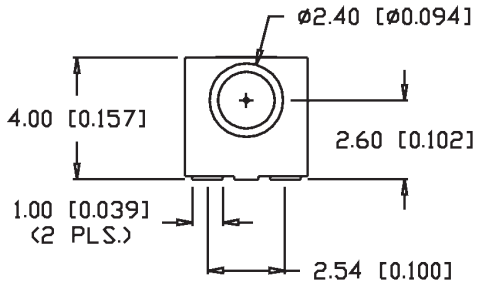
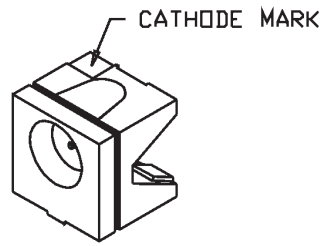
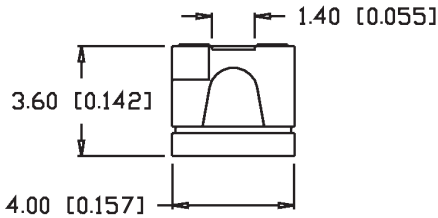
SMT LEDs ~ Right Angle ~ Molded Carrier



1
2
3
4
5
6
7
8
9
10
11
12
13
14
15
16
17
18
19
20
21
22
23
24
25
26
27
28
29

SML-LXR44XC-TR

Right Angle SMT Molded Carrier



Features/Options

- ▶ Molded Package with 2.6 mm Chip Center Off-Board
- ▶ State-of-the-Art LED Die (All Colors)
- ▶ High Volume Capacity Production
- ▶ Focused Light Emission and Reflection
- ▶ Increased Power/Solder
- ▶ Heat Dissipation Over PCB Carrier Types

Applications/Uses

- ▶ Keyboard/Keypad Illumination
- ▶ Display or Character Backlighting
- ▶ Status or Fault Indicators
- ▶ Motion Control Circuits
- ▶ Medical Diagnostic Instruments

SML-LXR44 Package Style - Standard Brightness

Right Angle SMT Molded Carrier

Lumex Part Number	Die Material	Emitted Color	Peak (nm)	Lens	Axial Intensity @ If=20mA	V _f Typ @ If=20mA	V _f Max @ If=20mA	View Angle° 2θ	Reel Size (pcs)	Reflow Profile Pg. 134	Tape Specs Pg. 134
SML-LXR44GC-TR	GaP	Green	565	Clear	25	2.2	2.6	90	500	Figure 3	Figure B
SML-LXR44IC-TR	GaAsP	High Intensity Red	635	Clear	25	2.0	2.5	90	500	Figure 3	Figure B
SML-LXR44YC-TR	GaAsP	Yellow	585	Clear	9	2.1	2.5	90	500	Figure 3	Figure B

Mouser Electronics

Authorized Distributor

Click to View Pricing, Inventory, Delivery & Lifecycle Information:

Lumex:

[SML-LXR44IC-TR](#)