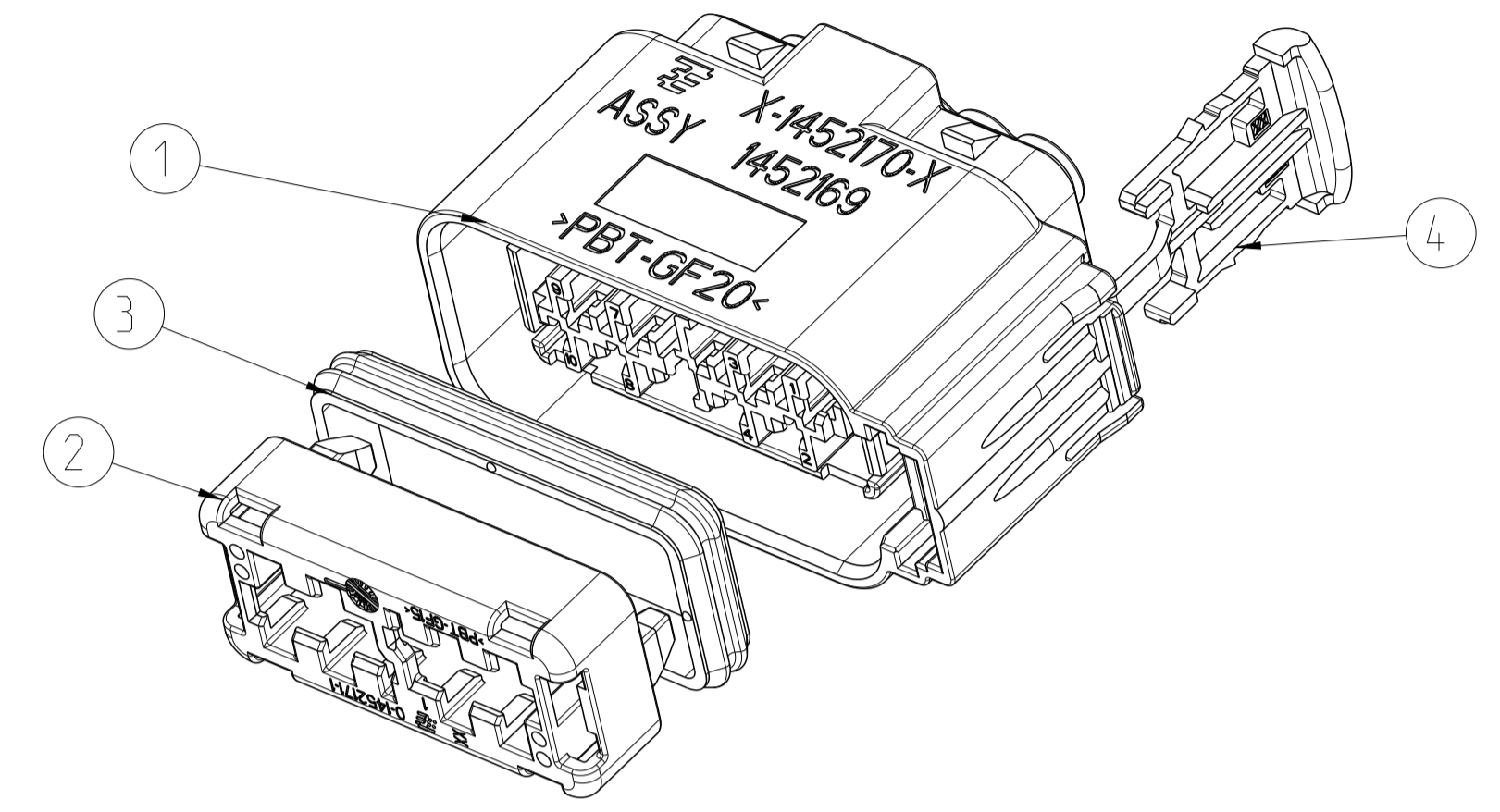
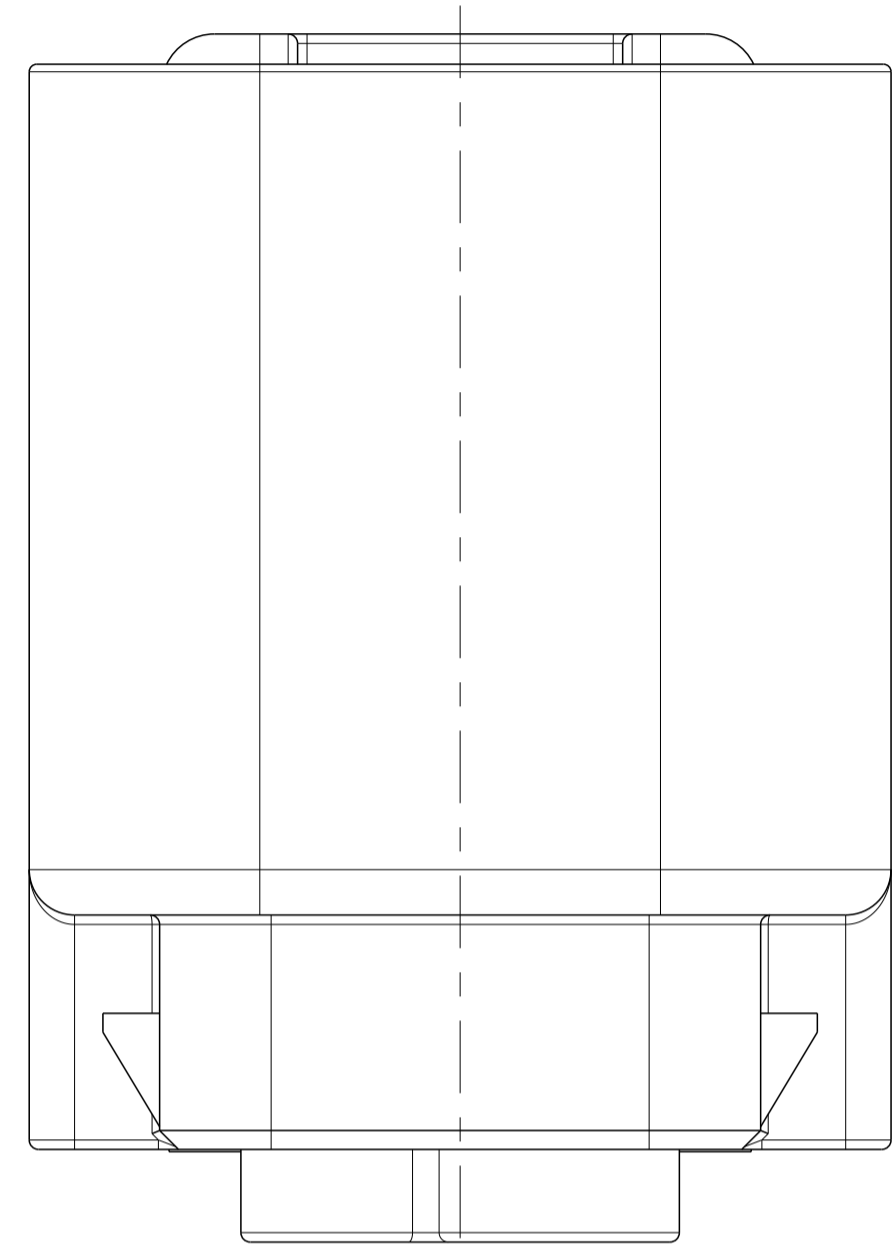
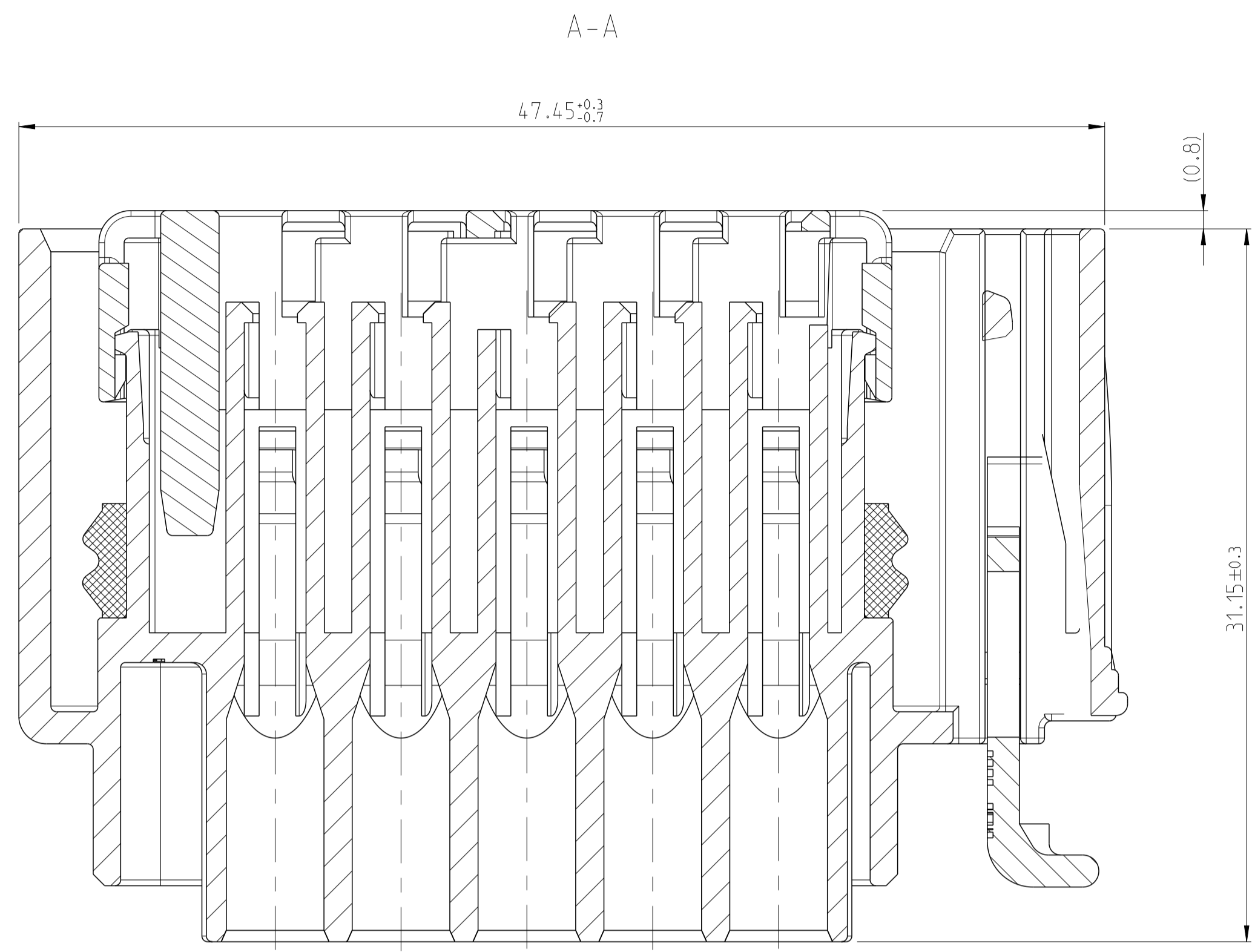


| LOC | DIST | REVISIONS | | | | | |
|-----|------|-----------|-----|---------------|------------|-----|------|
| | | P | LTN | DESCRIPTION | DATE | DMN | APVD |
| | | C | | ECR-10-008396 | 19APR2010 | GP | GM |
| | | C1 | | ECR-11-015258 | 29JULY2011 | PT | GM |
| | | D | | ECR-12-020122 | 21NOV2012 | SH | GM |

1.5MM FEMALE TERMINAL SEALED
 1.5 mm Buchsenkontakte gedichtet
 SUITABLE TERMINALS: FORD CAT. 2 (SUPPLIER YAZAKI)
 Geeignete Kontakte: FORD Kat. 2 (Zulieferer YAZAKI)



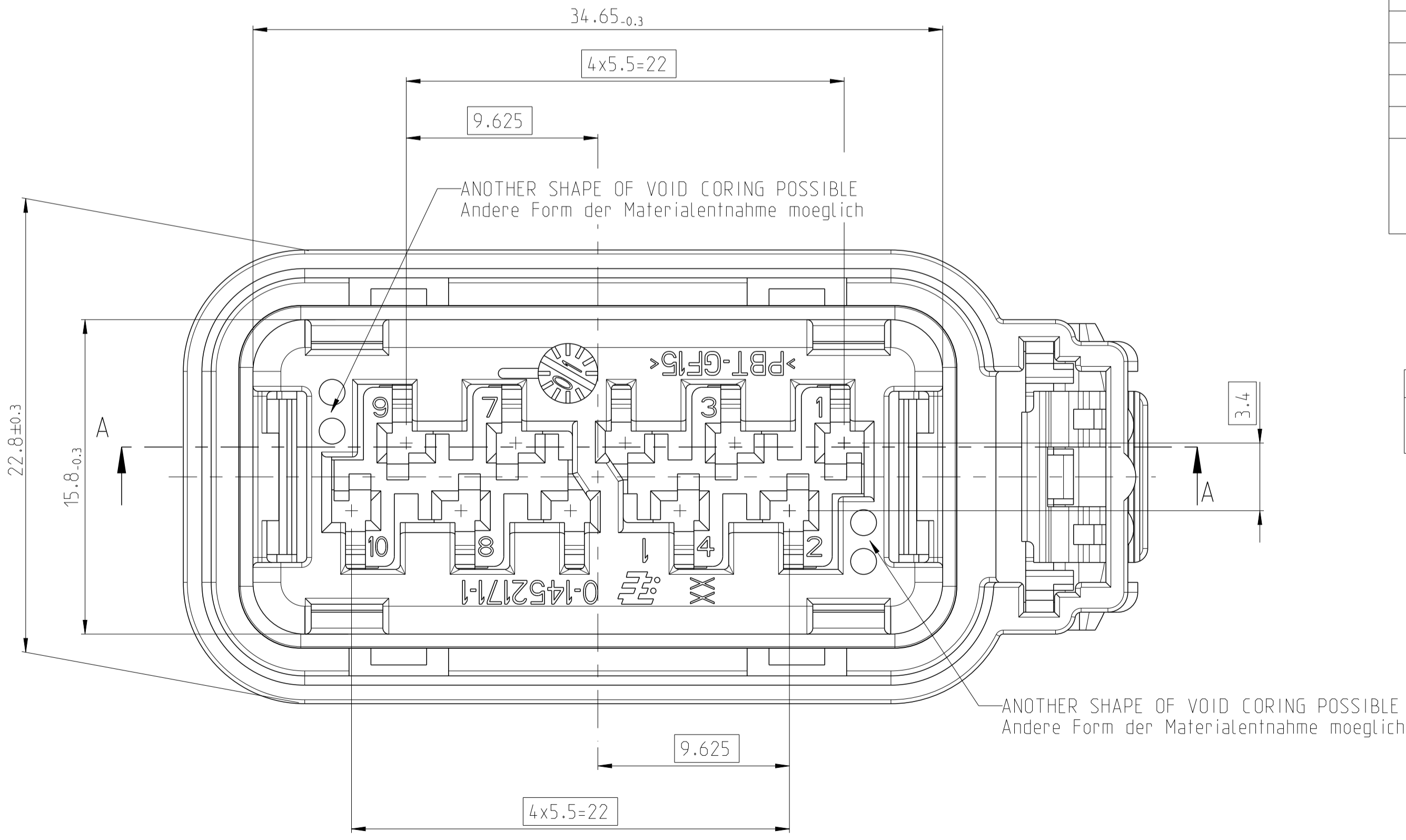
2:1

NOTES:
 Bemerkungen:

- THE MARKING OF THE FORD NO ON THE FEMALE HSG. IS FOR ALL ASSEMBLIES (WITH OR WITHOUT CPA / OPEN OR CLOSED CAVITIES):
3M5T-14A464-DKA
 Die Beschriftung der Ford PN auf dem Buchsengehäuse lautet fuer alle Baugruppen (mit oder ohne Gehäusesicherung /offene und geschlossene Kammern):
3M5T-14A464-DKA
- DELIVERY CONDITION: SPACER AND CPA IN PRELOCK POSITION
 Anlieferungszustand: Spacer und CPA in Vorraststellung
- ASSEMBLY PART NUMBER SHOWN WITHOUT DASH NUMBERS. SAME AS SINGLE PARTS DASH NUMBERS. PLEASE USE SINGLE PART DASH NUMBERS.
 Assy Teile Nr. wird ohne Vor- und Nach Strichzahl gezeigt. Bedeutung gleich wie beim Einzelteil. Bitte die Vor- und Nach Strichzahl vom Einzelteil benutzen.
- PERIPHERAL SEAL MATERIAL: LR3846/30

| TE - NO. TE - Nr. | 1 | 2 | 3 | 4 | 5 | 6 | 7 | 8 | 9 | 10 |
|----------------------|---|---|---|---|---|---|---|---|---|----|
| 3-1452169-1 | | X | X | | | | X | | | |
| 2-1452169-2 | | X | X | | | | | | X | X |
| 2-1452169-1 | | X | X | | | | | | X | X |
| 1-1452169-1 | | X | X | | | X | | | | |
| 0-1452169-1 | | | | | | | | | | |

BLANKED CAVITIES INDICATE OPEN LOCATIONS
 Leere Felder kennzeichnen offene Kammern
 WITH "X" MARKED CAVITIES INDICATE ALWAYS CLOSED LOCATIONS
 Markierte Felder mit "X" kennzeichnen geschlossene Kammern



| DESCRIPTION | TE PN. | TE PN. | TE PN. | TE PN. | TE PN. | TE PN. | FORD PN. |
|----------------------------|-----------------------|-------------|-------------|-------------|-------------|-------------|----------------|
| SUITABLE FOR passend zu | COVER 0-1452173-1 | 0-1452173-1 | 0-1452173-1 | 0-1452173-1 | 0-1452173-1 | 0-1452173-1 | 3M5T-14N003-AA |
| | HEADER X-1452179-X | X-1452179-X | X-1452179-X | X-1452179-X | X-1452179-X | X-1452179-X | - |

| QTY | TE PN. | TE PN. | TE PN. | TE PN. | TE PN. | TE PN. | FORD PN. | DESCRIPTION | WEIGHT [g] | COLOR | ITEM NO. |
|-----|--------|--------|--------|--------|--------|--------|----------|---|------------|--------|----------|
| 1 | - | - | - | - | 1 | - | PBT-GF15 | CPA | 0.42 | RED | 4 |
| 1 | 1 | 1 | 1 | 1 | 1 | 1 | SILICON | PERIPHERAL SEAL | 0.75 | ORANGE | 3 |
| 1 | 1 | 1 | 1 | 1 | 1 | 1 | PBT-GF15 | 10 WAY DOOR LATCH CONNECTOR | 2.31 | RED | 2 |
| | | | | | | | PBT-GF20 | SPACER | | | |
| 1 | | 1 | | | | | PBT-GF20 | 10 WAY DOOR LATCH CONNECTOR FEMALE HSG. (2,3,7 CLOSED) | 16.82 | BLACK | 1 |
| | | | | | | | PBT-GF20 | 10 WAY DOOR LATCH CONNECTOR FEMALE HSG. (2,3,9,10 CLOSED) | 16.82 | BLACK | 1 |
| | | | | | 1 | | PBT-GF20 | 10 WAY DOOR LATCH CONNECTOR FEMALE HSG.(2,3,6 CLOSED) | 16.82 | BLACK | 1 |
| | | | | | 1 | | PBT-GF20 | 10 WAY DOOR LATCH CONNECTOR FEMALE HSG. | 16.82 | BLACK | 1 |

| TE PN. | TE PN. | TE PN. | TE PN. | TE PN. | TE PN. | FORD PN. |
|-------------|---------------------|---------------------|---------------------|-----------------|---------------------|----------------------------|
| 2-1452169-2 | 3-1452169-1 | 2-1452169-1 | 1-1452169-1 | 0-1452169-2 | 0-1452169-1 | MATERIAL |
| D | D | D | D | D | D | ASSY. REVISION |
| - | 3M5T-14A464-DKA-003 | 3M5T-14A464-DKA-002 | 3M5T-14A464-DKA-001 | 3M5T-14A464-EKA | 3M5T-14A464-DKA-000 | FORD PN |
| 20.3 | 19.88 | 19.88 | 19.88 | 20.30 | 19.88 | WEIGHT OF EACH ASSY NO [g] |

0-2 AS SHOWN

THIS DRAWING IS A CONTROLLED DOCUMENT. DWN: S. Dentler 02JUL2001
 CHK: G. PUCKEL 02JUL2001
 DIMENSIONS: mm TOLERANCES UNLESS OTHERWISE SPECIFIED: 0 PLC ±, 1 PLC ±, 2 PLC ±, 3 PLC ±, 4 PLC ±, ANGLES ±.
 MATERIAL: - FINISH: -
 THIS DRAWING IS A CONTROLLED DOCUMENT. DWN: S. Dentler 02JUL2001
 CHK: G. PUCKEL 02JUL2001
 APVD: G. MUMPER 02JUL2001
 PRODUCT SPEC: -
 APPLICATION SPEC: -
 CAGE CODE: 116-18483 DRAWING NO: A1
 WEIGHT: -
 Customer Drawing
TE TE Connectivity
 NAME: 10 WAY DOOR LATCH CONNECTOR ASSY
 1.5mm FEMALE TERMINAL SEALED
 SIZE: 116-18483 CAGE CODE DRAWING NO: A1
 00779 ©=1452169
 SCALE: 5:1 SHEET 1 OF 1 REV D

Mouser Electronics

Authorized Distributor

Click to View Pricing, Inventory, Delivery & Lifecycle Information:

[TE Connectivity:](#)

[1452169-1](#)