

# 双刀波动开关

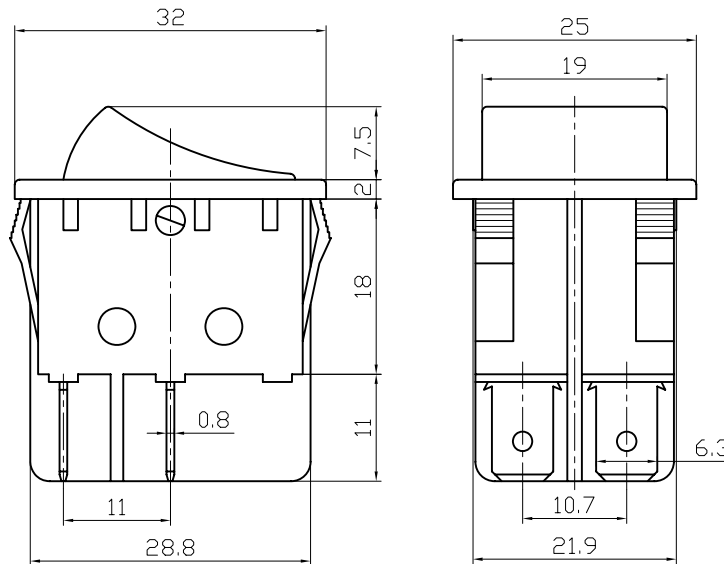
## Double-poles Rocker Switch

型号(TYPE):RS-201-6C

### 技术特性 (Specification)

1. 规格 (Rating):20A 125VAC;16A 250VAC
2. 接触电阻(Contact R):35mΩ max
3. 绝缘电阻(Insulation R):500V DC 100MΩ min
4. 耐电压 (Dielectric Strength):1 Minute 1500V AC
5. 操作温度(Operating Temperature):-25°C~+85°C
6. 电气寿命(Electrical Life):10,000 Cycles

### 外型图 (Outline Drawing)



### 安装尺寸 (Mounting)



### 电路图 (Circuitry)

