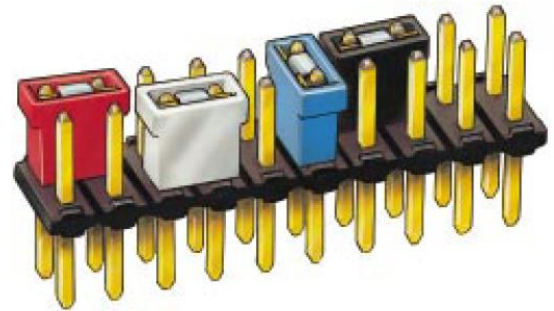
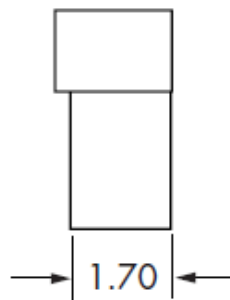
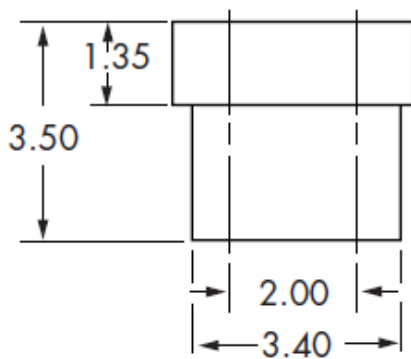
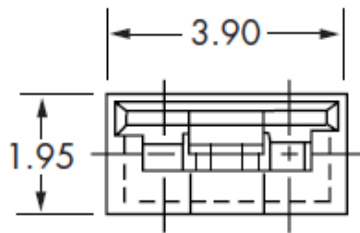


## Datasheet

### Jumper Socket (Open top)

RS Stock number 132-0765

#### Dimensions - mm



#### Description:

Can be fitted and removed by hand. An alternative on-board programming method to DIL switches. Open top for test probe. Choice of plating finish.

- End and side stackable
- High pressure contact
- Choice of four colours
- Tapered entry for pin insertion