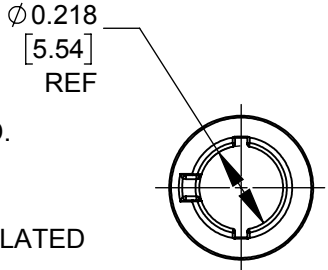


NOTES:

1. HANDLE SHIPPED UNASSEMBLED.
2. MATERIALS:
 O-RING : ELASTOMER
 PIN CONTACT : BRASS, NICKEL PLATED
 BODY : BRASS, NICKEL PLATED
 INSULATING WASHER : PHENOLIC
 INSULATING TUBE : MYLAR
 PLUG INSULATOR : THERMOPLASTIC, BLACK
 PIN TERMINAL : BRASS, TIN PLATED
 CLAMP TERMINAL : BRASS, TIN PLATED
 HANDLE : THERMOPLASTIC, BLACK
3. THIS PRODUCT IS RoHS COMPLIANT.



CUSTOMER DRAWING

					THIS DRAWING DESCRIBES A DESIGN CONSIDERED PROPRIETARY IN NATURE, DEVELOPED AND MANUFACTURED BY SWITCHCRAFT INC. AND IS RELEASED ON A CONFIDENTIAL BASIS FOR IDENTIFICATION PURPOSES ONLY.						
					SIZE	WIDTH	MULT	LBS/M	TEMPER		
					UNLESS OTHERWISE SPECIFIED			FINISH			
					1. ALL DIMENSIONS IN INCHES [mm]			MATERIAL			
					- TWO PLACE DECIMALS ±0.02 [0.5]			SPEC No.			
					- THREE PLACE DECIMALS ±0.005 [0.13]			SCALE			
					FIRST USED ON			2:1			
					DATE DRAWN	BY	CHKD	APVD			
					10-12-17	SRC	TJK 8/17/18	TJK 8/17/18			
										SHEET 1 OF 1	
										NAME POWER PLUG, LOCKING	
					DO NOT SCALE DRAWING					REV A	
					SolidWorks CAD File						

Mouser Electronics

Authorized Distributor

Click to View Pricing, Inventory, Delivery & Lifecycle Information:

[Switchcraft:](#)

[760BKZ](#)