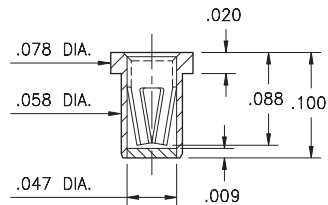


# PIN RECEPTACLES

## PIN RECEPTACLES WITH ORGANIC FIBRE PLUG® SOLDER BARRIER (SEE SPECIFIC CONTACT RANGE ON PAGES 254 - 262)

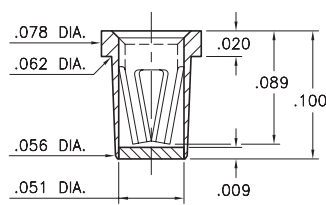
### 0337

**0337-0-XX-XX-15-XX-10-0**  
Solder mount in  $\varnothing .066" \pm .003"$  PTH  
#15 Contact for  $\varnothing .020" - .032"$  pins  
Also available on 8mm wide carrier tape:  
See page 194.15 for Tape & Reel details



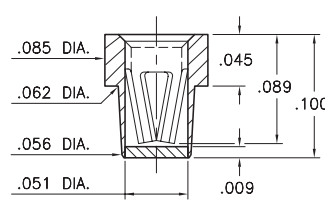
### 4280

**4280-0-XX-XX-16-XX-10-0**  
Solder mount in  $\varnothing .067" \pm .003"$  PTH  
#16 Contact for  $\varnothing .022" - .034"$  pins  
Also available on 8mm wide carrier tape:  
See page 194.15 for Tape & Reel details



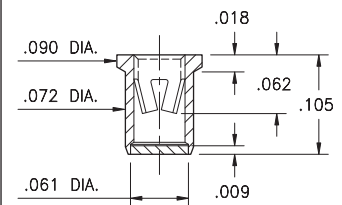
### 5280

**5280-0-XX-XX-16-XX-40-0**  
Solder mount in  $\varnothing .067" \pm .003"$  PTH  
#16 Contact for  $\varnothing .022" - .034"$  pins  
Also available on 16mm wide carrier tape:  
See page 194.16 for Tape & Reel details



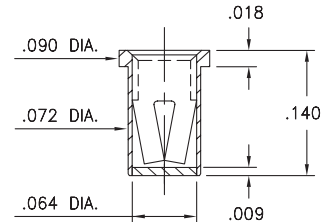
### 0332

**0332-0-XX-XX-18-XX-10-0**  
Solder mount in  $\varnothing .079" \pm .003"$  PTH  
#18 Contact for  $\varnothing .037" - .043"$  pins  
Also available on 16mm wide carrier tape:  
See page 194.16 for Tape & Reel details



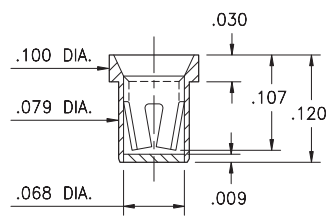
### 0479

**0479-0-XX-XX-34-XX-10-0**  
Solder mount in  $\varnothing .077" \pm .003"$  PTH  
#34 Contact for  $\varnothing .032" - .046"$  pins  
Also available on 16mm wide carrier tape:  
See page 194.16 for Tape & Reel details



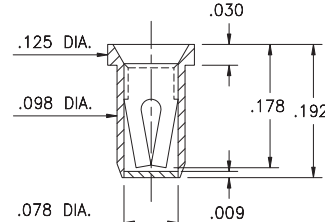
### 0375

**0375-0-XX-XX-02-XX-10-0**  
Solder mount in  $\varnothing .087" \pm .003"$  PTH  
#02 Contact for  $\varnothing .040" - .050"$  pins  
Also available on 12mm wide carrier tape:  
See page 194.16 for Tape & Reel details



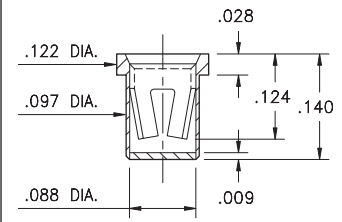
### 0353

**0353-0-XX-XX-03-XX-10-0**  
Solder mount in  $\varnothing .106" \pm .003"$  PTH  
#03 Contact for  $\varnothing .040" - .060"$  pins  
Also available on 12mm wide carrier tape:  
See page 194.16 for Tape & Reel details



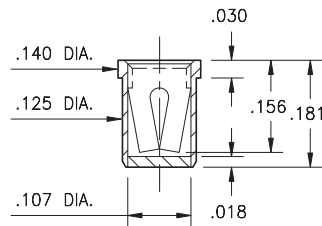
### 0384

**0384-0-XX-XX-23-XX-10-0**  
Solder mount in  $\varnothing .105" \pm .003"$  PTH  
#23 Contact for  $\varnothing .045" - .065"$  pins  
Also available on 12mm wide carrier tape:  
See page 194.16 for Tape & Reel details



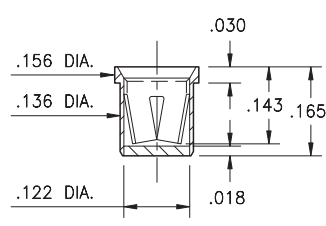
### 0376

**0376-0-XX-XX-07-XX-10-0**  
Solder mount in  $\varnothing .133" \pm .003"$  PTH  
#07 Contact for  $\varnothing .065" - .082"$  pins  
Also available on 16mm wide carrier tape:  
See page 194.17 for Tape & Reel details



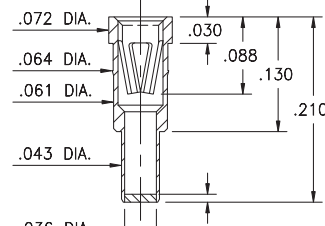
### 0321

**0321-0-XX-XX-08-XX-10-0**  
Solder mount in  $\varnothing .144" \pm .003"$  PTH  
#08 Contact for  $\varnothing .084" - .102"$  pins  
Also available on 16mm wide carrier tape:  
See page 194.17 for Tape & Reel details



### 3435

**3435-0-XX-XX-47-XX-04-0**  
Solder mount in  $\varnothing .046" \pm .003"$  PTH  
#47 Contact for  $\varnothing .025" - .037"$  &  $\varnothing .025"$  pins  
Also available on 24mm wide carrier tape:  
See page 194.17 for Tape & Reel details



#### SPECIFICATIONS:

**Shell Material:** Brass Alloy 360, 1/2 Hard  
**Contact Material:** Beryllium Copper Alloy 172, HT  
**Solder Barrier:** Organic Fibre Plug®  
**Dimensions:** Inches  
**Tolerances On:** Lengths:  $\pm .005$   
Diameters:  $\pm .002$   
Angles:  $\pm 2^\circ$



#### ORDER CODE: XXXX - 0 - XX - XX - XX - XX - XX - 0

#### BASIC PART #

#### SPECIFY PACKAGING:

- 43 Discrete Receptacles
- 67 Supplied on 13" Reels

#### SPECIFY SHELL FINISH:

- 01 200  $\mu$ " TIN/LEAD OVER NICKEL
- 80 200  $\mu$ " TIN OVER NICKEL (RoHS)

#### SPECIFY CONTACT FINISH:

- 27 30  $\mu$ " GOLD OVER NICKEL (RoHS)
- 02 100  $\mu$ " TIN/LEAD OVER NICKEL
- 80 200  $\mu$ " TIN OVER NICKEL (RoHS)

#### CONTACT:

#02, #07, #08, #15, #16, #18, #23, #34 or #47 CONTACT (DATA ON PAGES 254 - 262)



# Mouser Electronics

Authorized Distributor

Click to View Pricing, Inventory, Delivery & Lifecycle Information:

## Mill-Max:

[0479-0-67-80-49-80-10-0](#) [0321-0-43-80-08-27-10-0](#) [0479-0-43-80-34-27-10-0](#) [0479-0-43-01-34-27-10-0](#) [4280-0-43-01-16-27-10-0](#) [0321-0-67-80-08-27-10-0](#) [0332-0-67-80-18-27-10-0](#) [0337-0-67-80-15-27-10-0](#) [0353-0-67-80-03-27-10-0](#) [0375-0-67-80-02-27-10-0](#) [0376-0-67-80-07-27-10-0](#) [0384-0-67-80-23-27-10-0](#) [0479-0-67-80-34-27-10-0](#) [4280-0-67-80-16-27-10-0](#) [5280-0-67-80-16-27-40-0](#) [5280-0-15-01-16-27-40-0](#) [4280-0-15-80-16-80-10-0](#) [5280-0-15-80-16-80-40-0](#) [0479-0-15-01-34-01-10-0](#) [5280-0-15-80-16-27-40-0](#) [0479-0-15-15-34-27-10-0](#) [0479-0-15-00-00-00-10-0](#) [5280-0-15-15-16-27-40-0](#) [0479-0-15-80-34-80-10-0](#) [4280-0-15-00-00-00-10-0](#) [0479-0-15-01-34-27-10-0](#) [0479-0-15-80-34-27-10-0](#) [4280-0-15-80-16-27-10-0](#) [5280-0-15-01-16-01-40-0](#) [5280-0-15-00-00-00-40-0](#) [4280-0-15-01-16-27-10-0](#) [4280-0-15-15-16-27-10-0](#) [4280-0-15-01-16-01-10-0](#) [0479-0-15-01-34-14-10-0](#) [0479-0-15-15-34-14-10-0](#) [0479-0-15-80-34-14-10-0](#) [4280-0-15-15-16-14-10-0](#) [4280-0-15-80-16-14-10-0](#) [4280-0-15-01-16-14-10-0](#)