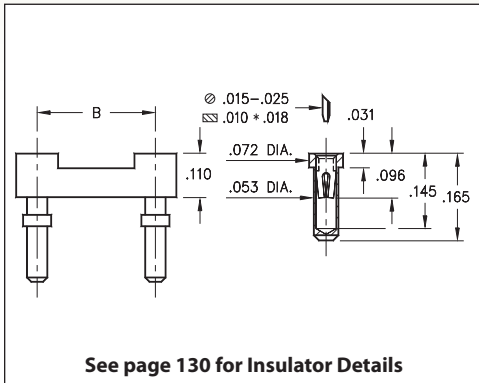
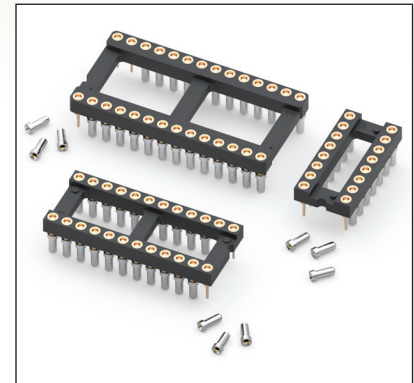


# DUAL-IN-LINE SOCKETS

## SERIES 614...001 • CARRIER TYPE, LOW PROFILE • OPEN FRAME



- Convenient way to load loose receptacles on a PC board
- Removable plastic carriers can be returned for reloading
- Hi-Rel, 4-finger BeCu #30 contact is rated at 3 amps. See page 253 for details
- Series 614 uses MM #1401 pins. See page 170 for details
- Insulators are high temperature thermoplastic, suitable for all soldering operations
- For Electrical, Mechanical and Environmental Data, see page 264 for details



Total number of pins				Quantity per tube	<h3>ORDERING INFORMATION</h3>					
	A	B	C							
10	0.5	0.2	0.3	40	614-XX-210-41-001000					
4	0.2	0.3	0.4	102	614-XX-304-41-001000					
6	0.3	0.3	0.4	67	614-XX-306-41-001000					
8	0.4	0.3	0.4	50	614-XX-308-41-001000					
10	0.5	0.3	0.4	40	614-XX-310-41-001000					
14	0.7	0.3	0.4	28	614-XX-314-41-001000					
16	0.8	0.3	0.4	25	614-XX-316-41-001000					
18	0.9	0.3	0.4	22	614-XX-318-41-001000					
20	1.0	0.3	0.4	20	614-XX-320-41-001000					
22	1.1	0.3	0.4	18	614-XX-322-41-001000					
24	1.2	0.3	0.4	16	614-XX-324-41-001000					
28	1.4	0.3	0.4	14	614-XX-328-41-001000					
20	1.0	0.4	0.5	20	614-XX-420-41-001000					
22	1.1	0.4	0.5	18	614-XX-422-41-001000					
24	1.2	0.4	0.5	16	614-XX-424-41-001000					
28	1.4	0.4	0.5	14	614-XX-428-41-001000					
32	1.6	0.4	0.5	12	614-XX-432-41-001000					
24	1.2	0.6	0.7	16	614-XX-624-41-001000					
28	1.4	0.6	0.7	14	614-XX-628-41-001000					
32	1.6	0.6	0.7	12	614-XX-632-41-001000					
36	1.8	0.6	0.7	11	614-XX-636-41-001000					
40	2.0	0.6	0.7	10	614-XX-640-41-001000					
42	2.1	0.6	0.7	9	614-XX-642-41-001000					
48	2.4	0.6	0.7	8	614-XX-648-41-001000					
50	2.5	0.6	0.7	8	614-XX-650-41-001000					
52	2.6	0.6	0.7	7	614-XX-652-41-001000					
50	2.5	0.9	1.0	8	614-XX-950-41-001000					
52	2.6	0.9	1.0	7	614-XX-952-41-001000					
64	3.2	0.9	1.0	6	614-XX-964-41-001000					
<b>SPECIFY PLATING CODE XX =</b>					91	93	41	43		
Sleeve (Pin)					200 μ" Sn/Pb	200 μ" Sn/Pb	200 μ" Sn	200 μ" Sn		
Contact (Clip)					10 μ" Au	30 μ" Au	10 μ" Au	30 μ" Au		

XX=Plating Code  
See Below

RoHS-2  
2011/65/EU



# Mouser Electronics

Authorized Distributor

Click to View Pricing, Inventory, Delivery & Lifecycle Information:

## Mill-Max:

[614-93-964-41-001000](#) [614-93-952-41-001000](#) [614-93-950-41-001000](#) [614-93-652-41-001000](#) [614-93-650-41-001000](#) [614-93-648-41-001000](#) [614-93-642-41-001000](#) [614-93-640-41-001000](#) [614-93-636-41-001000](#) [614-93-632-41-001000](#) [614-93-628-41-001000](#) [614-93-624-41-001000](#) [614-93-432-41-001000](#) [614-93-428-41-001000](#) [614-93-424-41-001000](#) [614-93-422-41-001000](#) [614-93-420-41-001000](#) [614-93-328-41-001000](#) [614-93-324-41-001000](#) [614-93-322-41-001000](#) [614-93-320-41-001000](#) [614-93-318-41-001000](#) [614-93-316-41-001000](#) [614-93-314-41-001000](#) [614-93-310-41-001000](#) [614-93-308-41-001000](#) [614-93-306-41-001000](#) [614-93-304-41-001000](#) [614-93-210-41-001000](#) [614-43-964-41-001000](#) [614-43-952-41-001000](#) [614-43-950-41-001000](#) [614-43-652-41-001000](#) [614-43-650-41-001000](#) [614-43-648-41-001000](#) [614-43-642-41-001000](#) [614-43-640-41-001000](#) [614-43-636-41-001000](#) [614-43-632-41-001000](#) [614-43-628-41-001000](#) [614-43-624-41-001000](#) [614-43-432-41-001000](#) [614-43-428-41-001000](#) [614-43-424-41-001000](#) [614-43-422-41-001000](#) [614-43-420-41-001000](#) [614-43-328-41-001000](#) [614-43-324-41-001000](#) [614-43-322-41-001000](#) [614-43-320-41-001000](#) [614-43-318-41-001000](#) [614-43-316-41-001000](#) [614-43-314-41-001000](#) [614-43-310-41-001000](#) [614-43-308-41-001000](#) [614-43-306-41-001000](#) [614-43-304-41-001000](#) [614-43-210-41-001000](#)