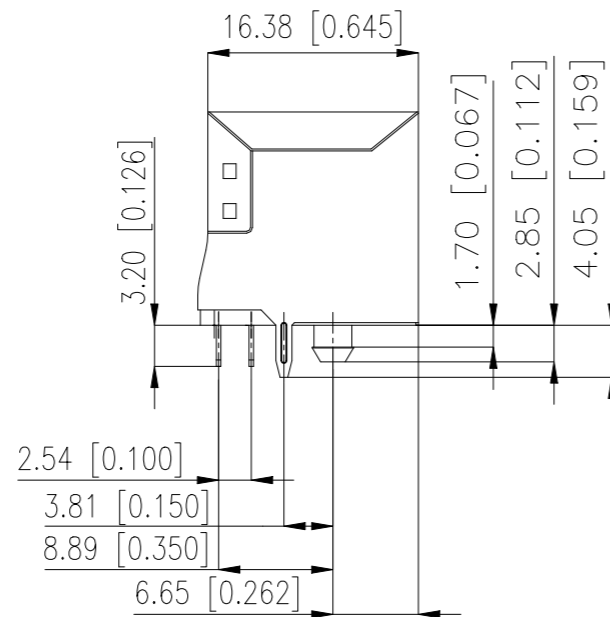
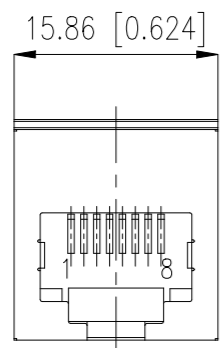
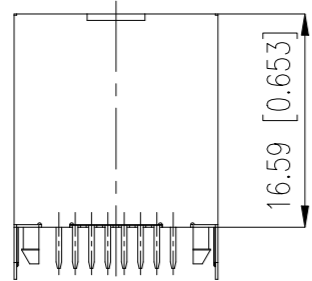
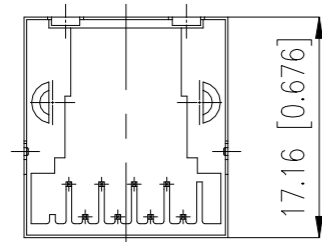
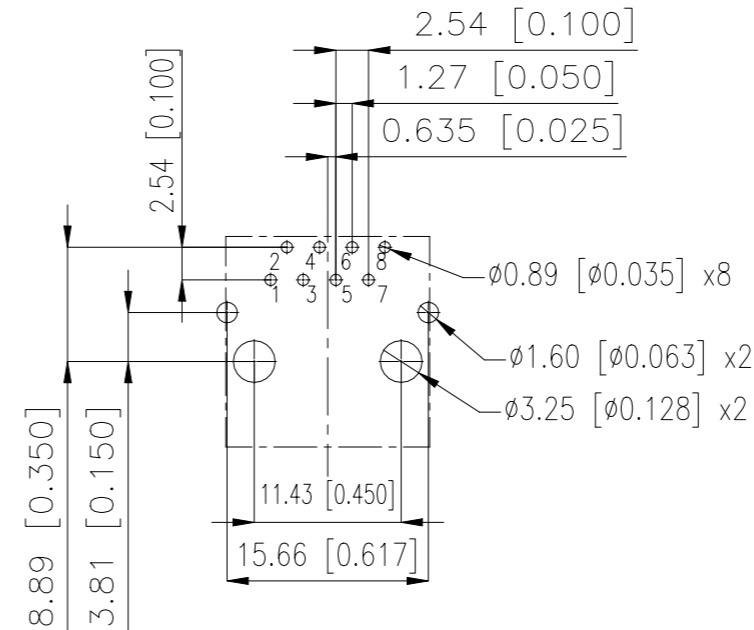


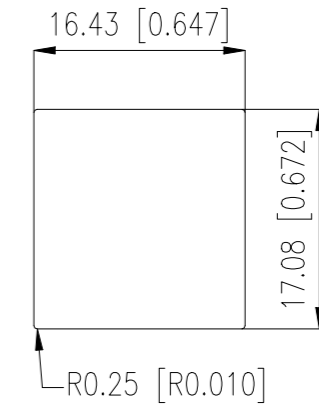
P	LTR	DESCRIPTION	DATE	DWN	APVD
	A1	NEW DRAWING	05NOV2022	ASB	JDB



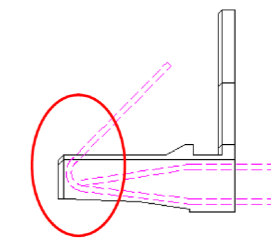
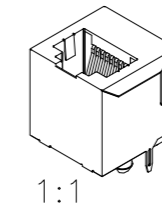
RECOMMENDED PCB LAYOUT (COMPONENT SIDE VIEW)
 EMPFOHLENES LEITERPLATTEN-LAYOUT (BESTUECKUNGSSEITE)
 TOL ±0,05 mm unless noted



RECOMMENDED PANEL CUTOUT
 EMPFOHLENER FRONTPLATTEN-AUSSCHNITT



CONTACT DESIGN



NOTE 1: RoHS COMPLIANT

Technical specifications

Materials & Finish	Standard applic.	Value	Test Data	Standard applic.	Value
Insulation body	Standard description	PBT 30%	Mechanical properties		
Contact material	Standard description	C5210 (acc. IIS)	Insertion/withdrawal force	IEC 603-7	max. 20 N
Contact finish, mating zone	Thickness of plating	see chart	Mechanical operations	IEC 512-5, 9a	min. 1,000
Contact finish termination zone	Thickness of plating	80 µm matte Sn over 50 µm Ni	Effectiveness of connector		
Shell/shield material	Standard description	C2680 (acc. IIS)	coupling device	IEC 512-8, 15f	50 N
Shell/shield plating	Thickness of plating	50 µm Ni / 80 µm Sn	Electrical properties		
			Creepage / clearance distances		
Assembly process			a) Contact - contact	IEC 807-3	0,52 mm
Packaging		Tray	b) Contact - shell	IEC 807-3	min. 1,0 mm
Solder temperature		235°C at 3-5 s	Voltage proof (Dielectric Withstand Voltage)		
Suitable assembly process		wave	a) Contact - contact	IEC 512-2, 4a	min. 1.000 V AC/DC
			b) Contact - shell/testpanel	IEC 512-2, 4a	min. 1.500 V AC/DC
Approvals			Current carrying capacity	IEC 512-3, 5b	1,5 A @ 25°C
UL insulation body	UL 94	V0	Contact resistance	IEC 512-2, 2a	max. 30 mOhm
UL File No.		E145613	Insulation resistance	IEC 512-2, 3a	min. 500 MOhm
RoHS compliant		Yes	Environmental properties		
			Operation temperature		see chart

PART NO. IDENT. NR.	TRANSMISSION REQUIREMENT ÜBERTRAGUNGSANFORDERUNG	CONTACT FINISH KONTAKTOBERFLÄCHE	OPERATION TEMPERATURE BETRIEBSTEMPERATUR
133934-E	CAT 5	50µinAu	0 to +70°C
203512-E	CAT 5	30µinAu	-40° to +85°C
133184-E	CAT 5	30µinAu	0 to +70°C
133183-E	CAT 3/4	30µinAu	0 to +70°C

THIS DRAWING IS A CONTROLLED DOCUMENT.		DWN 03NOV2022 B S ADRUSH		STE TE Connectivity	
DIMENSIONS: mm [INCHES]		CHK 05NOV2022 N MANTIKOU			
TOLERANCES UNLESS OTHERWISE SPECIFIED:		APVD 05NOV2022 J DE BRUIJN		NAME	
0 PLC ± -		PRODUCT SPEC		MOD JACK - MJHV	
1 PLC ± -		108-94901		8P8C, 1X1, VERTICAL	
2 PLC ± -		APPLICATION SPEC		-	
3 PLC ± -		114-94805		SIZE CAGE CODE DRAWING NO RESTRICTED TO	
4 PLC ± -		WEIGHT -		A3 00779 C-133184-E	
ANGLES ± -		CUSTOMER DRAWING		SCALE NTS SHEET 1 OF 1 REV A1	
FINISH -					