

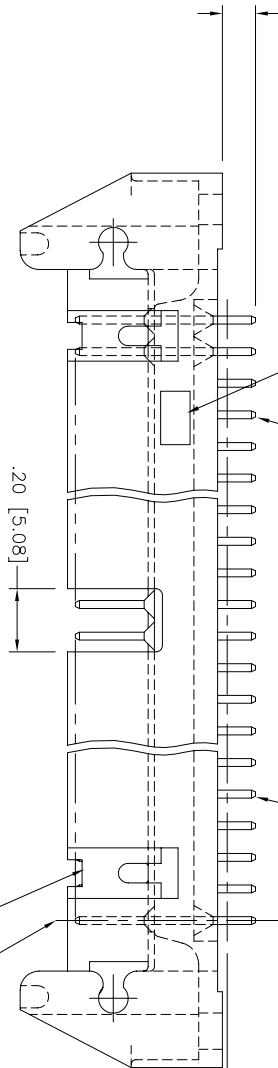
PRODUCT NUMBER
SEE TABLE

DIM "D" ± 0.10 [± 0.25]

NOTE 4

.025 \pm .001 [± 0.03]
ROUND or SQUARE; SEE TABLE

ϕ .010/.25 [X] Y [S] AT BASE, TYP.
 ϕ .016/.41 [M] X [Y] [S] AT TIPS, TYP.



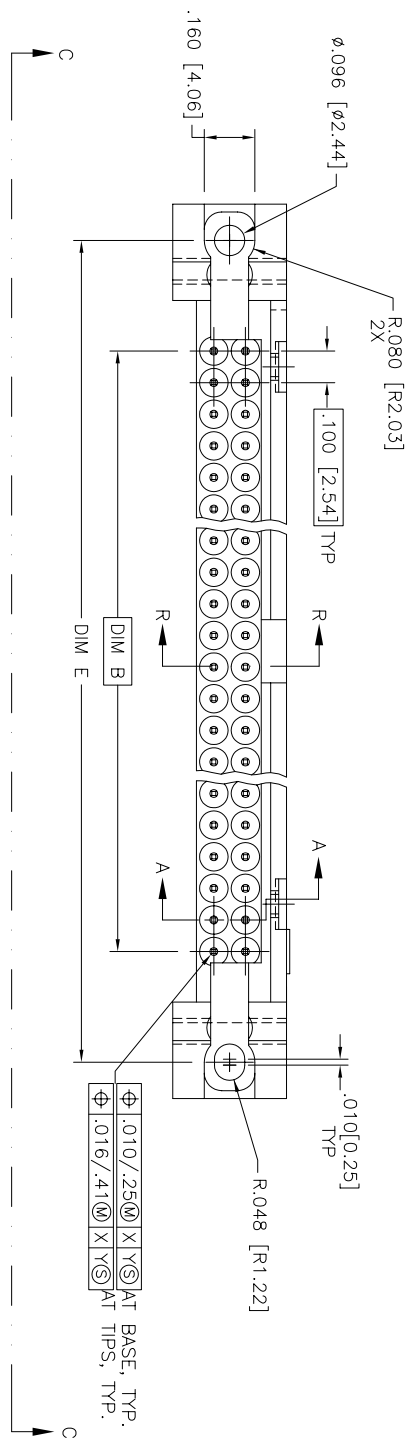
SEED DETAILS ON SH. 2 & TABLE
FOR POLARIZATION FEATURE
ARRANGEMENT AND STYLE

① of PIN 1

.010 [0.25]
TYP

R.048 [R1.22]

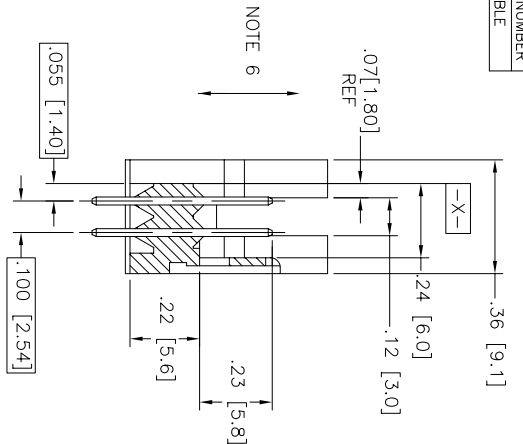
ϕ .010/.25 [X] Y [S] AT BASE, TYP.
 ϕ .016/.41 [M] X [Y] [S] AT TIPS, TYP.



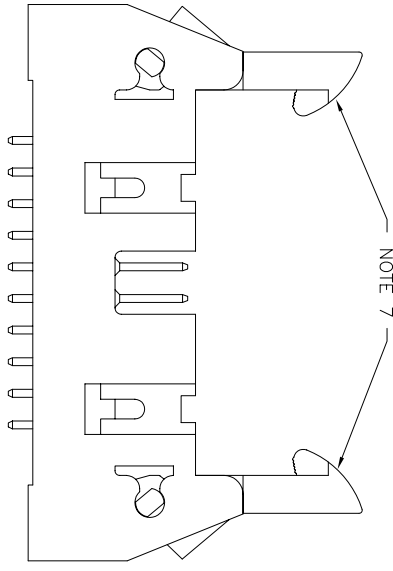
16-508-036,
16-508-002, 16-508-131

mat'l. code	surface	tolerance	projection	product family
	ISO 1302	ISO 406	ISO 1101	QUICKIE HDR, STRIGHT
lit ecn no dr date	tolerances unless otherwise specified			title
H V91075 EPK 5/6/99			INCH/MM	QUICKIE HDR, STRIGHT
J V00871 EPK 4/11/00	angles	JM10/2413	scale 2:1	3 WALL LATCH & EJECT
K V01240 MDF 5/11/00 0 \pm .2	lineart	JM10/2413		dwg no
L V06-0344 GIP 3/24/03 dr		JM10/2413		66207
M N05-0094 MHT 4/4/05 engr	M. SMIK	11/15/90		sheet 1 of 8 size
N M05-0282 ACS 7/22/06 chr	M. SMYK	11/15/90		A3
P M07-0368 MHT 8/17/07 oppd	M. SMYK	11/15/90		Product Customer Drawing
sheet revision	P P P P P P P P			
index	1 2 3 4 5 6 7 8			

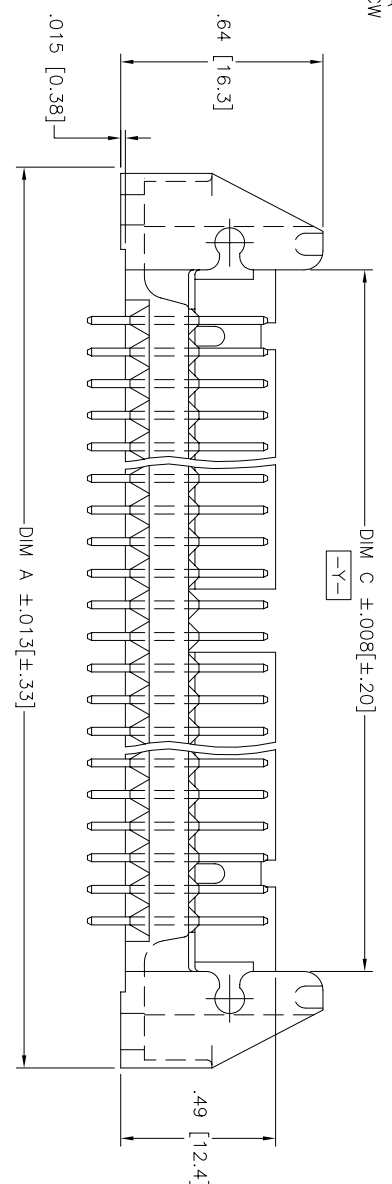
PRODUCT NUMBER
SEE TABLE



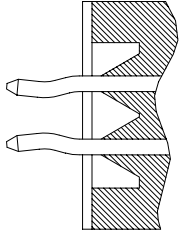
SECTION A-A
ROTATED 90° CW



HEADER WITH LATCHES

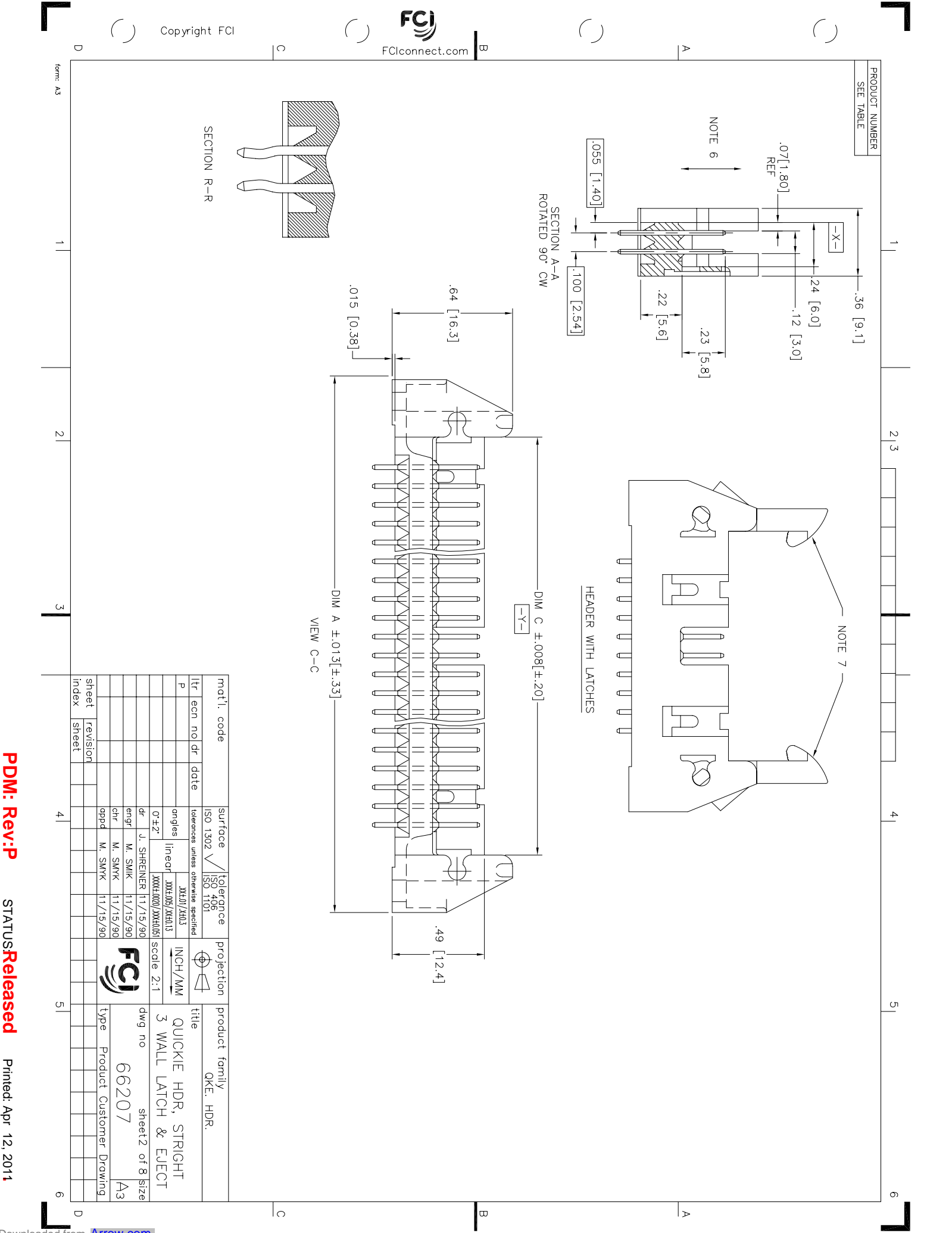


VIEW C-C

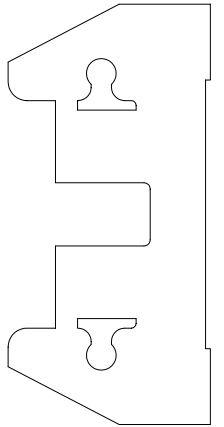


SECTION R-R

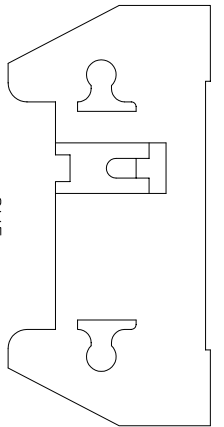
mat'l. code	surface	tolerance	projection	product family
	ISO 1302	ISO 406	ISO 1101	QUICKIE HDR, STRIGHT
	tolerances unless otherwise specified			QKE. HDR.
	angles	linecd	INCH/MM	title
	0° ±.2°	JM10/2H13	scale 2:1	QUICKIE HDR, STRIGHT
	dr	JM10/2H13		3 WALL LATCH & EJECT
	engr	JM10/2H13		dwg no
	chr	JM10/2H13		66207
	pppd	JM10/2H13		sheet 2 of 8 size
				A3
sheet	revision			type
index	sheet			Product Customer Drawing



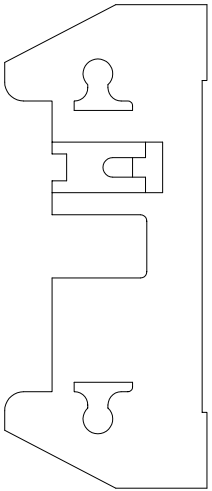
PRODUCT NUMBER
SEE TABLE



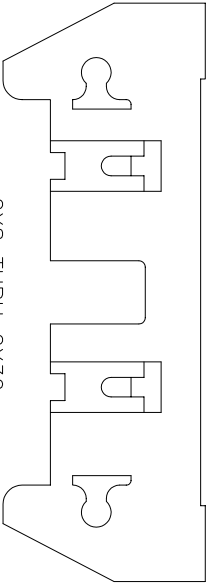
2X5
STYLE A



2X5
STYLE B



2X7
STYLE C



2X8 THRU 2X30
2X10 SHOWN
STYLE D

NOTES:

1. MOLDING MATERIAL: GLASS FILLED POLYESTER FLAME RETARDANT PER UL-94V-0. COLOR: BLUE
2. PIN MATERIAL: PHOS BRONZE
3. 1" MAX DRAFT PERMISSIBLE ON ALL SURFACES UNLESS OTHERWISE SPECIFIED.
4. LOGO LOCATED APPROX. AS SHOWN.
5. RECOMMENDED MOUNTING SCREW: #2-56 FILLISTER HD. MACH. SCREW 3/8" LG. FOR 1/16" AND 3/32" BOARD 7/16" LG. FOR 1/8" BOARD.
6. 4 LBS/2.3 KG MIN PIN RETENTION IN BOTH DIRECTIONS. (SEE TABLE)
7. HEADER WITH LOW PROFILE (LP) LATCHES (SEE TABLE) ARE DESIGNED TO BE USED WITH FEMALE CONNECTORS WITHOUT STRAIN RELIEF. HEADERS WITH (STD) LATCHES (SEE TABLE) ARE DESIGNED TO BE USED WITH FEMALE CONNECTORS WITH STRAIN RELIEF.
8. PLATING ON LEAD-IN PORTION OF PIN IS MANUFACTURING OPTION.
9. SPECIAL LATCH HEIGHT TO BE USED WITH CARD CONNECTOR APPLICATION.
10. RETENTION FEATURE AVAILABLE ON CONNECTORS WITH .105/2.67, .120/3.05, OR .150/3.81 TAIL LENGTH RETENTIVE P/N INCLUDES THE LETTER "R" AFTER THE EXISTING P/N.
EXAMPLE: 66207-xxx FOR RETENTIVE P/N.
66207-xxxR FOR RETENTIVE P/N.
RETENTIVE FEATURE LOCATION - SEE TABLE
SEE SECTION R-R ON SH. 2.
11. ADD "L" SUFFIX AT THE END OF PART NUMBER FOR LEAD FREE.
12. THE HOUSING WILL WITHSTAND EXPOSURE TO 260°C PEAK TEMPERATURE FOR 15 SECONDS, IN A WAVE SOLDER APPLICATION WITH A 1.5mm MINIMUM THICK CIRCUIT BOARD. SEE APPLICATION NOTES/PROCEDURES IF THEY ARE AVAILABLE.
13. THIS PRODUCT MEETS EUROPEAN UNION DIRECTIVES AND OTHER COUNTRY REGULATION AS DESCRIBED IN GS-22-008.
14. PLATING OPTIONS:
MAY BE EITHER GOLD OR GXT PLATED AT MANUFACTURER'S OPTION.

mat'l. code	surface	tolerance	projection	product family
	ISO 1302	ISO 406		QKE. HDR.
		ISO 1101		
lit. ecn no. dr	date	tolerances unless otherwise specified		
P		angles	INCH/MM	title
		0° ±2°	scale 2:1	QUICKIE HDR, STRIGHT
		linecod JXXL005/XXL013		3 WALL LATCH & EJECT
		XXXXX000/XXXX0061		
		dr J. SHREINER 11/15/90		dwg no 66207
		engr M. SMIK 11/15/90		sheet 3 of 8 size A3
		chr M. SMYK 11/15/90		
		pppd M. SMYK 11/15/90		
sheet	revision			
index	sheet			

PRODUCT NO NOTE 11	SIZE	DIM A	DIM B	DIM C	DIM D	DIM E	LATCHES NOTE 7	STYLE	PIN SHAPE	PIN PLATING (NOTE 14)
66207-001	2 X 5	1.330/33.78	.400/10.16	.720/18.29	.105/2.67	1.100/27.94	NO	A	RND	30µ"/0.76µ Au OR GXT OVER 50µ"/1.27µ Ni
-002	2 X 7	1.530/38.86	.600/15.24	.920/23.37		1.300/33.02		C		
-003	2 X 8	1.630/41.40	.700/17.78	1.020/25.91		1.400/35.56		D		
-004	2 X 10	1.830/46.48	.900/22.86	1.220/30.99		1.600/40.64				
-005	2 X 13	2.130/54.10	1.200/30.48	1.520/38.61		1.900/48.26				
-006	2 X 17	2.530/64.26	1.600/40.64	1.920/48.77		2.300/58.42				
-007	2 X 20	2.830/71.88	1.900/48.26	2.220/56.39		2.600/66.04				
-008	2 X 25	3.330/84.58	2.400/60.96	2.720/69.09		3.100/78.74				
-009	2 X 30	3.830/97.28	2.900/73.66	3.220/81.79		3.600/91.44	NO	D		
-010	2 X 5	1.330/33.78	.400/10.16	.720/18.29		1.100/27.94	STD	A		
-011	2 X 7	1.530/38.86	.600/15.24	.920/23.37		1.300/33.02		C		
-012	2 X 8	1.630/41.40	.700/17.78	1.020/25.91		1.400/35.56		D		
-013	2 X 10	1.830/46.48	.900/22.86	1.220/30.99		1.600/40.64				
-014	2 X 13	2.130/54.10	1.200/30.48	1.520/38.61		1.900/48.26				
-015	2 X 17	2.530/64.26	1.600/40.64	1.920/48.77		2.300/58.42				
-016	2 X 20	2.830/71.88	1.900/48.26	2.220/56.39		2.600/66.04				
-017	2 X 25	3.330/84.58	2.400/60.96	2.720/69.09		3.100/78.74				
-018	2 X 30	3.830/97.28	2.900/73.66	3.220/81.79		3.600/91.44	STD	D		
-019	2 X 5	1.330/33.78	.400/10.16	.720/18.29		1.100/27.94	LP	A		
-020	2 X 7	1.530/38.86	.600/15.24	.920/23.37		1.300/33.02		C		
-021	2 X 8	1.630/41.40	.700/17.78	1.020/25.91		1.400/35.56		D		
-022	2 X 10	1.830/46.48	.900/22.86	1.220/30.99		1.600/40.64				
-023	2 X 13	2.130/54.10	1.200/30.48	1.520/38.61		1.900/48.26				
-024	2 X 17	2.530/64.26	1.600/40.64	1.920/48.77		2.300/58.42				
-025	2 X 20	2.830/71.88	1.900/48.26	2.220/56.39		2.600/66.04				
-026	2 X 25	3.330/84.58	2.400/60.96	2.720/69.09		3.100/78.74				
-027	2 X 30	3.830/97.28	2.900/73.66	3.220/81.79		3.600/91.44	LP	D		
-028	2 X 5	1.330/33.78	.400/10.16	.720/18.29		1.100/27.94	NO	B		
-029	2 X 5	1.330/33.78	.400/10.16	.720/18.29		1.100/27.94	STD	B		
-030	2 X 5	1.330/33.78	.400/10.16	.720/18.29	.105/2.67	1.100/27.94	LP	B		
-031	2 X 5	1.330/33.78	.400/10.16	.720/18.29	.150/3.81	1.300/33.02	NO	A		
-032	2 X 7	1.530/38.86	.600/15.24	.920/23.37		1.400/35.56		C		
-033	2 X 8	1.630/41.40	.700/17.78	1.020/25.91		1.600/40.64		D		
-034	2 X 10	1.830/46.48	.900/22.86	1.220/30.99		1.900/48.26		D		
-035	2 X 13	2.130/54.10	1.200/30.48	1.520/38.61		2.300/58.42		D		
66207-036	2 X 17	2.530/64.26	1.600/40.64	1.920/48.77	.150/3.81	2.300/58.42	NO	D	RND	30µ"/0.76µ Au OR GXT OVER 50µ"/1.27µ Ni

mat'l. code		surface		tolerance		projection		product family	
		ISO 1302		ISO 406		INCH/MM		OKE. HDR.	
lit. ecn no. dr		date		tolerances unless otherwise specified		scale 2:1		title	
P				0±.2"		3X.010/3X.013		QUICKIE HDR, STRIGHT	
				in. or		3X.010/3X.013		3 WALL LATCH & EJECT	
				dr		J. SHREINER 11/15/90		Sheet 4 of 8 size	
				engr		M. SMIK 11/15/90		66207	
				chr		M. SMYK 11/15/90		A3	
				pppd		M. SMYK 11/15/90		Product Customer Drawing	
sheet		revision							
index		sheet							

PRODUCT NO NOTE 11	SIZE	DIM A	DIM B	DIM C	DIM D	DIM E	LATCH NOTE 7	STYLE	PIN SHAPE	PIN PLATING (NOTE 14)
66207-037	2 X 20	2.830/71.88	1.900/48.26	2.220/56.39	.150/3.81	2.600/76.04	NO	D	RND	30u"/0.76u Au OR GXT OVER 50u"/1.27u Ni
-038	2 X 25	3.330/84.58	2.400/60.96	2.720/69.09		3.100/78.74	NO	D		
-039	2 X 30	3.830/97.28	2.900/73.66	3.220/81.79		3.600/91.44	NO	D		
-040	2 X 5	1.330/33.78	.400/10.16	.720/18.29		1.100/27.94	STD	A		
-041	2 X 7	1.530/38.86	.600/15.24	.920/23.37		1.300/33.02	STD	C		
-042	2 X 8	1.630/41.40	.700/17.78	1.020/25.91		1.400/35.56	STD	D		
-043	2 X 10	1.830/46.48	.900/22.86	1.220/30.99		1.600/40.64	STD	D		
-044	2 X 13	2.130/54.10	1.200/30.48	1.520/38.61		1.900/48.26	STD	D		
-046	2 X 20	2.830/71.88	1.900/48.26	2.220/56.39		2.600/76.04	STD	D		
-047	2 X 25	3.330/84.58	2.400/60.96	2.720/69.09		3.100/78.74	STD	D		
-048	2 X 30	3.830/97.28	2.900/73.66	3.220/81.79		3.600/91.44	STD	D		
-049	2 X 5	1.330/33.78	.400/10.16	.720/18.29		1.100/27.94	LP	A		
-050	2 X 7	1.530/38.86	.600/15.24	.920/23.37		1.300/33.02	LP	C		
-051	2 X 8	1.630/41.40	.700/17.78	1.020/25.91		1.400/35.56	LP	D		
-052	2 X 10	1.830/46.48	.900/22.86	1.220/30.99		1.600/40.64	LP	D		
-053	2 X 13	2.130/54.10	1.200/30.48	1.520/38.61		1.900/48.26	LP	D		
-054	2 X 17	2.530/64.26	1.600/40.64	1.920/48.77		2.300/58.42	LP	D		
-055	2 X 20	2.830/71.88	1.900/48.26	2.220/56.39		2.600/76.04	LP	D		
-056	2 X 25	3.330/84.58	2.400/60.96	2.720/69.09		3.100/78.74	LP	D		
-057	2 X 30	3.830/97.28	2.900/73.66	3.220/81.79		3.600/91.44	LP	D		
-058	2 X 5	1.330/33.78	.400/10.16	.720/18.29		1.100/27.94	NO	B		
-059	2 X 5	1.330/33.78	.400/10.16	.720/18.29		1.100/27.94	NO	B		
-060	2 X 5	1.330/33.78	.400/10.16	.720/18.29		1.100/27.94	STD	B		
-061	2 X 5	1.330/33.78	.400/10.16	.720/18.29		1.100/27.94	LP	B		
-062	2 X 7	1.530/38.86	.600/15.24	.920/23.37		1.300/33.02	LP	A		
-063	2 X 8	1.630/41.40	.700/17.78	1.020/25.91		1.400/35.56	LP	C		
-064	2 X 10	1.830/46.48	.900/22.86	1.220/30.99		1.600/40.64	LP	D		
-065	2 X 13	2.130/54.10	1.200/30.48	1.520/38.61		1.900/48.26	LP	D		
-066	2 X 17	2.530/64.26	1.600/40.64	1.920/48.77		2.300/58.42	LP	D		
-067	2 X 20	2.830/71.88	1.900/48.26	2.220/56.39		2.600/76.04	LP	D		
-068	2 X 25	3.330/84.58	2.400/60.96	2.720/69.09		3.100/78.74	LP	D		
-069	2 X 30	3.830/97.28	2.900/73.66	3.220/81.79		3.600/91.44	LP	D		
-070	2 X 5	1.330/33.78	.400/10.16	.720/18.29		1.100/27.94	STD	A		
-071	2 X 7	1.530/38.86	.600/15.24	.920/23.37		1.300/33.02	STD	C		
66207-072	2 X 8	1.630/41.40	.700/17.78	1.020/25.91	.675/17.15	1.400/35.56	STD	D	SQ	30u"/0.76u Au OR GXT OVER 50u"/1.27u Ni

mat'l. code		surface		tolerance		projection		product family	
ISO 1302		ISO 406		ISO 1101		INCH/MM		QKE. HDR.	
date		tolerances unless otherwise specified		scale 2:1		title		QUICKIE HDR, STRIGHT	
0*±2"		XXX-000/XXX-001		XXX-000/XXX-001		3 WALL LATCH & EJECT		Sheet5 of 8 size	
dr U. SHREINER 11/15/90		engr M. SMIK 11/15/90		chr M. SMYK 11/15/90		pppd M. SMWK 11/15/90		66207	
sheet revision		sheet		sheet		sheet		sheet	
index		index		index		index		index	

PRODUCT NO NOTE 11	SIZE	DIM A	DIM B	DIM C	DIM D	DIM E	LATCH NOTE 7	STYLE	PIN SHAPE	PIN PLATING (NOTE 14)
66207-073	2 X 10	1.830/46.48	.900/22.86	1.220/30.99	.675/17.15	1.800/46.64	STD	D	SQ	30µ"/0.76µ Au OR CXT OVER 50µ"/1.27µ Ni
-074	2 X 13	2.130/54.10	1.200/30.48	1.520/38.61		1.900/48.26				
-075	2 X 17	2.530/64.26	1.600/40.64	1.920/48.77		2.300/58.42				
-076	2 X 20	2.830/71.88	1.900/48.26	2.220/56.39		2.600/76.04				
-077	2 X 25	3.330/84.58	2.400/60.96	2.720/69.09		3.100/78.74				
-078	2 X 30	3.830/97.28	2.900/73.66	3.220/81.79		3.600/91.44	STD	D		
-079	2 X 5	1.330/33.78	.400/10.16	.720/18.29		1.100/27.94	LP	A		
-080	2 X 7	1.530/38.86	.600/15.24	.920/23.37		1.300/33.02		C		
-081	2 X 8	1.630/41.40	.700/17.78	1.020/25.91		1.400/35.56		D		
-082	2 X 10	1.830/46.48	.900/22.86	1.220/30.99		1.600/40.64				
-083	2 X 13	2.130/54.10	1.200/30.48	1.520/38.61		1.900/48.26				
-084	2 X 17	2.530/64.26	1.600/40.64	1.920/48.77		2.300/58.42				
-085	2 X 20	2.830/71.88	1.900/48.26	2.220/56.39		2.600/76.04				
-086	2 X 25	3.330/84.58	2.400/60.96	2.720/69.09		3.100/78.74				
-087	2 X 30	3.830/97.28	2.900/73.66	3.220/81.79		3.600/91.44	LP	D		
-088	2 X 5	1.330/33.78	.400/10.16	.720/18.29		1.100/27.94	NO	B		
-089	2 X 5	1.330/33.78	.400/10.16	.720/18.29		1.100/27.94	STD	B		
-090	2 X 5	1.330/33.78	.400/10.16	.720/18.29		1.100/27.94	LP	B		
-091	2 X 12	2.030/45.56	1.100/27.94	1.420/36.07		1.800/45.72	NO	D	RND	
-092										
-093										
-094										
-095										
-096										
-097										
-098										
-099	2 X 12	2.030/45.56	1.100/27.94	1.420/36.07		1.800/45.72	LP		SQ	
-100	2 X 15	2.330/59.18	1.400/35.56	1.720/43.69		2.100/53.34	NO		RND	
-101										
-102										
-103										
-104										
-105										
-106										
-107										
66207-108	2 X 15	2.330/59.18	1.400/35.56	1.720/43.69	.675/17.15	2.100/53.34	LP	D	SQ	30µ"/0.76µ Au OR CXT OVER 50µ"/1.27µ Ni

mat'l. code		surface		tolerance		projection		product family	
		ISO 1302		ISO 406		INCH/MM		OKE. HDR.	
title		tolerances unless otherwise specified		ISO 1101		scale 2:1		QUICKIE HDR, STRIGHT	
3 WALL LATCH & EJECT		0 ±.2'		XXE10/XXE13				Sheet 6 of 8 size	
66207		infeed		XXE10/XXE13				A3	
sheet		dr		11/15/90				Product Customer Drawing	
revision		engr		M. SMK					
		chr		M. SMYK					
		pppd		M. SMYK					
		index		11/15/90					

PRODUCT NO NOTE 11	SIZE	DIM A	DIM B	DIM C	DIM D	DIM E	LATCH	STYLE	PIN SHAPE	PIN PLATING (NOTE 14)	PIN OMIT
66207-109	2 X 22	3.030/76.96	2.100/53.34	2.420/61.47	.105/2.67	2.800/81.12	NO	D	RND	30µ"/0.76µ Au OR GXT OVER 50µ"/1.27µ Ni	
-110					.105/2.67		STD				
-111					.105/2.67		LP				
-112					.150/3.81		NO				
-113					.150/3.81		STD				
-114					.150/3.81		LP				
-115					.675/17.15		NO				
-116					.675/17.15		STD				
-117	2 X 22	3.030/76.96	2.100/53.34	2.420/61.47	.675/17.15	2.800/81.12	LP			30µ"/0.76µ Au OR GXT OVER 50µ"/1.27µ Ni	
-118	2 X 17	2.530/64.26	1.600/40.64	1.920/48.77	.150/3.81	2.300/58.42	LP			15µ"/0.38µ Au OR GXT OVER 50µ"/1.27µ Ni	
-119	2 X 17	2.530/64.26	1.600/40.64	1.920/48.77	.150/3.81	2.300/58.42	NO			15µ"/0.38µ Au OR GXT OVER 50µ"/1.27µ Ni	
-120	2 X 10	1.830/46.48	.900/22.86	1.220/30.99	.105/2.67	1.600/40.64	NOTE 9	D	RND	30µ"/0.76µ Au OR GXT OVER 50µ"/1.27µ Ni	
-121	2 X 10	1.830/46.48	.900/22.86	1.220/30.99	.150/3.81	1.600/40.64	NOTE 9				
-122	2 X 5	1.330/33.78	.400/10.16	.720/18.29	.105/2.67	1.100/27.94	NOTE 9	B	SQ		
-123	2 X 5	1.330/33.78	.400/10.16	.720/18.29		1.100/27.94	NO	B			
-124	2 X 10	1.830/46.48	.900/22.86	1.220/30.99		1.600/40.64	NO	D			
-125	2 X 25	3.330/84.58	2.400/60.96	2.720/69.09		3.100/78.74	NOTE 9	D			
-126	2 X 25	3.330/84.58	2.400/60.96	2.720/69.09		3.100/78.74	NO	D			
-127	2 X 5	1.330/33.78	.400/10.16	.720/18.29		1.100/27.94	NO	A			
-128	2 X 5	1.330/33.78	.400/10.16	.720/18.29		1.100/27.94	NOTE 9	A			
-129	2 X 7	1.530/38.86	.600/15.24	.920/23.37		1.300/33.02	NO	C			
-130	2 X 7	1.530/38.86	.600/15.24	.920/23.37		1.300/33.02	NOTE 9	C			
-131	2 X 8	1.630/41.40	.700/17.78	1.020/25.91		1.400/35.56	NO	D			
-132	2 X 8	1.630/41.40	.700/17.78	1.020/25.91		1.400/35.56	NOTE 9				
-133	2 X 13	2.130/54.10	1.200/30.48	1.520/38.61		1.900/48.26	NO				
-134	2 X 13	2.130/54.10	1.200/30.48	1.520/38.61		1.900/48.26	NOTE 9				
-135	2 X 17	2.530/64.26	1.600/40.64	1.920/48.77		2.300/58.42	NO				
-136	2 X 17	2.530/64.26	1.600/40.64	1.920/48.77		2.300/58.42	NOTE 9				
-137	2 X 20	2.830/71.88	1.900/48.26	2.220/56.39		2.600/66.04	NO				
-138	2 X 20	2.830/71.88	1.900/48.26	2.220/56.39		2.600/66.04	NOTE 9				
-139	2 X 30	3.830/97.28	2.900/73.66	3.220/81.79		3.600/91.44	NO				
-140	2 X 30	3.830/97.28	2.900/73.66	3.220/81.79		3.600/91.44	NOTE 9	D	SQ	30µ"/0.76µ Au OR GXT OVER 50µ"/1.27µ Ni	
-141	2 X 5	1.330/33.78	.400/10.16	.720/18.29		1.100/27.94	LP	A	RND	15µ"/0.38µ Au OR GXT OVER 50µ"/1.27µ Ni	10
-142	2 X 5	1.330/33.78	.400/10.16	.720/18.29		1.100/27.94	LP	A	RND	15µ"/0.38µ Au OR GXT OVER 50µ"/1.27µ Ni	10
-143	2 X 5	1.330/33.78	.400/10.16	.720/18.29		1.100/27.94	NO	A	RND	15µ"/0.38µ Au OR GXT OVER 50µ"/1.27µ Ni	10
66207-144	2 X 5	1.330/33.78	.400/10.16	.720/18.29		1.100/27.94	NO	A	RND	15µ"/0.38µ Au OR GXT OVER 50µ"/1.27µ Ni	10

mat'l. code	surface	tolerance	projection	product family
	ISO 1302	ISO 406	INCH/MM	QKE. HDR.
		ISO 1101	scale 2:1	
lfr ecn no dr	date	tolerances unless otherwise specified	INCH/MM	title
		0±.2"	scale 2:1	QUICKIE HDR, STRIGHT
		inlead		3 WALL LATCH & EJECT
		XXXXX000/XXXX0061		Sheet 7 of 8 size
dr	J. SHREINER	11/15/90		66207
engr	M. SMIK	11/15/90		A3
chr	M. SMYK	11/15/90		
pppd	M. SMYK	11/15/90		
sheet	revision			
index	sheet			

PRODUCT NO	SIZE	DIM A	DIM B	DIM C	DIM D	DIM E	LATCH	STYLE	PIN SHAPE	PIN PLATING (NOTE 14)	PIN OMIT
66207-145 NOTE 11	2 X 5	1.330/33.78	.400/10.16	.720/18.29	.120/27.94	1.100/27.94	NOTE 9	A	RND	15µ"/0.38µ Au OR CXT OVER 50µ"/1.27µ Ni	10
66207-146	2 X 30	3.830/97.28	2.900/73.66	3.220/81.79	.150/3.81	3.600/91.44	NOTE 9	D	RND	30µ"/0.76µ Au OR CXT OVER 50µ"/1.27µ Ni	-

mat'l. code	surface	tolerance	projection	product family
	ISO 1302	ISO 406		QKE. HDR.
itr ecn no	date	tolerances unless otherwise specified		title
P		angles	INCH/MM	QUICKIE HDR, STRIGHT
		infeed	scale 2:1	3 WALL LATCH & EJECT
		dr		dwg no
		engr		66207
		chr		sheet 8 of 8 size
		pppd		A3
sheet	revision			type
index	sheet			Product Customer Drawing

