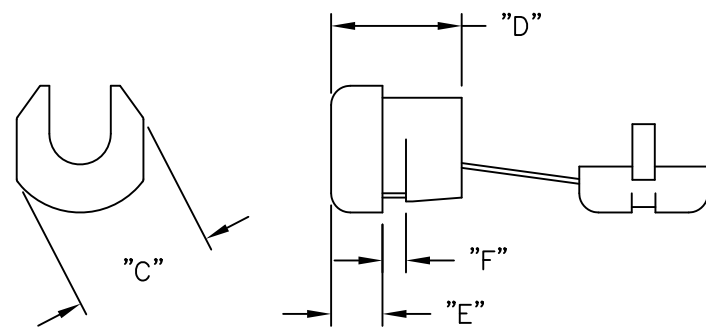
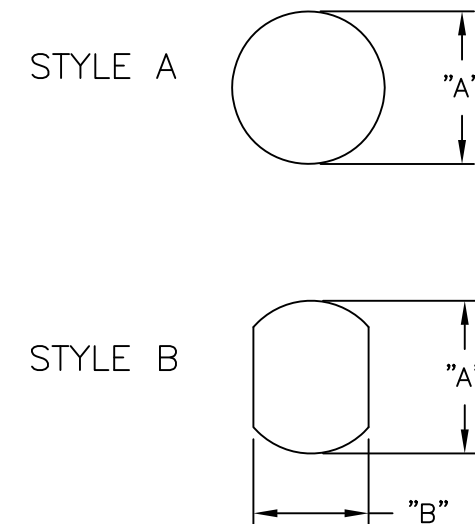


PART NUMBER	WIRES ACCOMMODATED	REF CABLE STYLE	APPROX. WIRE SIZE	MOUNTING HOLES		C REF.	D	E REF.	F MAX. PANEL THICKNESS	
				A	B					
SRB-F-1	SPT-1	FLAT	3.0 X 5.6 (.118 X .220)	9.5 (.374)	8.7 (.343)	10.8 (.425)	10.4 (.409)	4 (.157)	1.6 (.063)	
SRB-F-3				11 (.433)	9.9 (.390)	12.1 (.476)		3.2 (.126)	2.5 (.098)	
SRB-F-6						12.5 (.492)				
SRB-F-8	SPT-2		3.71 X 7.6 (.146 X .299)	12.7 (.500)	11.8 (.465)	13.9 (.547)	10.5 (.413)	4 (.157)	1.6 (.063)	
SRB-F-9			3.8 X 7.6 (.150 X .299)	13.1 (.516)					2.5 (.098)	
			3.71 X 7.6 (.146 X .299)	12.7 (.500)						
			3.8 X 7.6 (.150 X .299)	13.1 (.516)						
SRB-R-1	SVI		ROUND	6.4 (.252)	12.7 (.500)	11.5 (.453)	14.2 (.559)	10.9 (.429)	4.2 (.165)	1.6 (.063)
	SVT			7.4 (.291)	13.1 (.516)					2.5 (.098)
SRB-R-2	SVI	6.4 (.252)		12.7 (.500)						
	SVT	7.4 (.291)		13.1 (.516)						
SRB-R-3	SJT #18/3	7.6 (.299)		15.9 (.626)	14 (.551)	17.8 (.701)	14.8 (.583)	5.6 (.220)	1.6 (.063)	
SRB-R-4									17.6 (.693)	3.2 (.126)
SRB-R-7	SJT #16/3	8.2 - 9.2 (.323 - .362)				17.8 (.701)			1.6 (.063)	
SRB-R-8						17.3 (.681)			3.2 (.126)	
SRB-R-9	SJT #14/3	9.2 - 10.5 (.362 - .413)		19 (.748)	16.5 (.650)	21.5 (.847)	19.1 (.750)	7.8 (.307)	1.6 (.063)	
		11 (.433)		19.8 (.780)					3.2 (.126)	
SRB-R-10		9.2 - 10.5 (.362 - .413)	19 (.748)	21.7 (.854)					19.4 (.764)	3.2 (.126)
		11 (.433)	19.8 (.780)							

BUSHING DIMENSIONS



MOUNTING HOLE



- NOTES:
 1. MATERIAL: NYLON 6/6 UL 94 V-2 (RMS-315).
 2. COLOR: BLACK.
 3. UL LISTED, CARD # E107293

E	SEE CO 200682 FOR CHANGES	SK 06.16.2011	TITLE: STRAIN RELIEF BUSHINGS				DWG IN mm (IN)	FINAL	PART #	PRINT TYPE
D	SEE CO 200560 FOR CHANGES	SK 07/23/10								
C	SEE CO 200439 FOR CHANGES	SK 09.17.09	TOLERANCES UNLESS NOTED	FILE # SRB	DWN: R.D.G.	APP: R.D.G.	SEE TABLE	CA		
B	SEE CO 200294 FOR CHANGES	SK 12.12.08	10 ≤ X ≤ 30 = ±0.3	MAT'L: SEE NOTES	DT: 04/20/06	CHKD: S.J.				
A	RELEASED FOR PRODUCTION (SEE ECN 1161)	S.J. 05.02.06	30 ≤ X ≤ 50 = ±0.5	RE: RICHCO, INC.	RICHCO INC. ENG@RICHCO-INC.COM (773) 539-4060					
REV	DESCRIPTION	ENGR DATE	ANG = ±1°							

Mouser Electronics

Authorized Distributor

Click to View Pricing, Inventory, Delivery & Lifecycle Information:

Essentra:

[SRB-F-6](#) [SRB-R-9](#) [SRB-F-1](#) [SRB-R-2](#) [SRB-R-8](#) [SRB-F-8](#) [SRB-F-9](#) [SRB-R-1](#) [SRB-R-10](#) [SRB-R-3](#) [SRB-R-4](#)
[SRB-R-7](#)