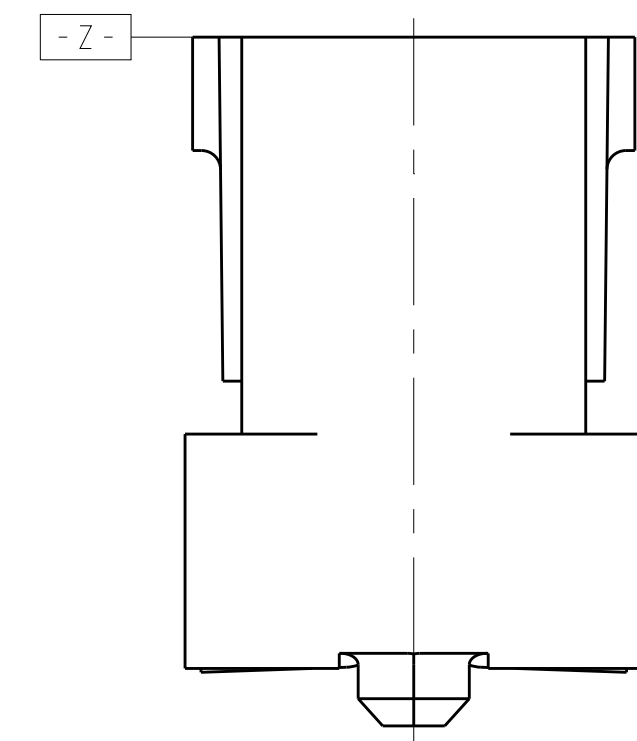
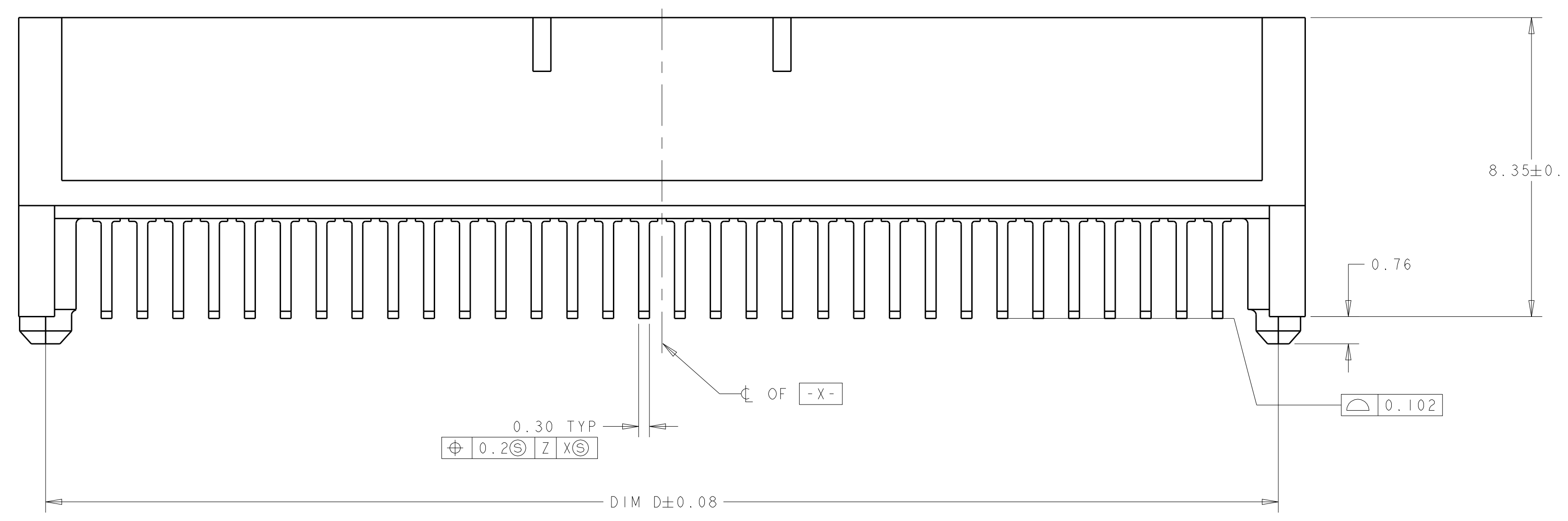
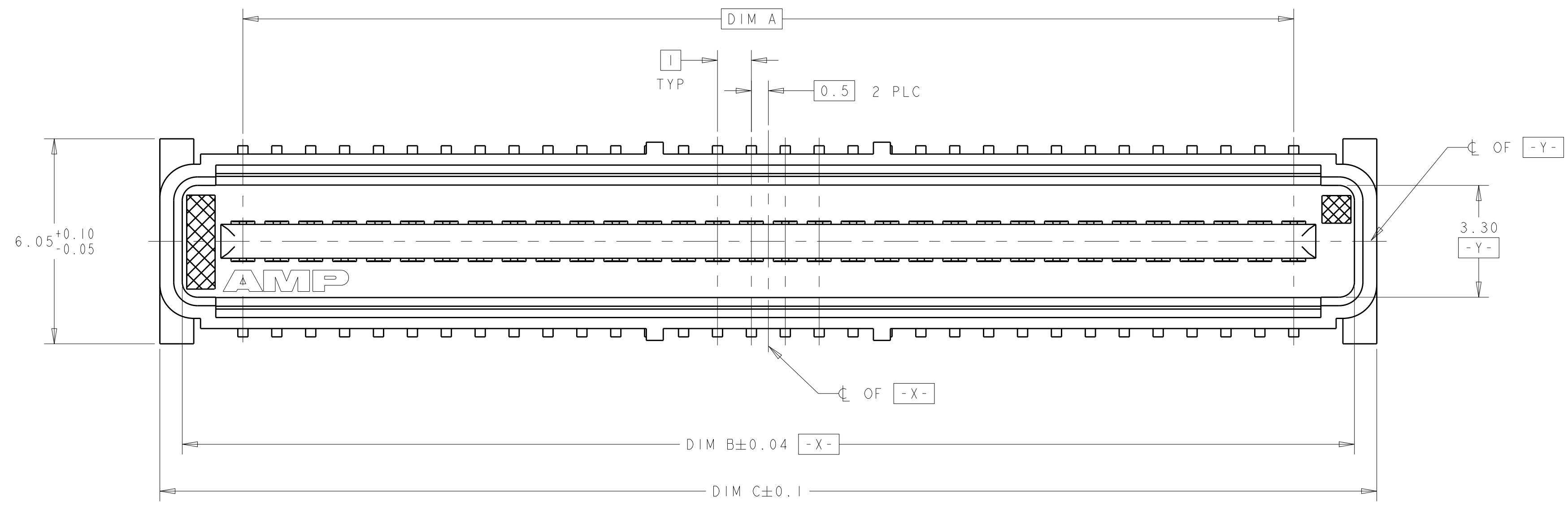
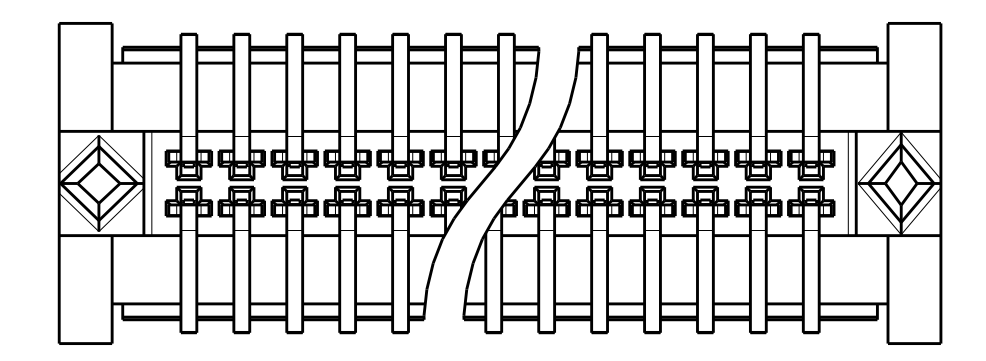


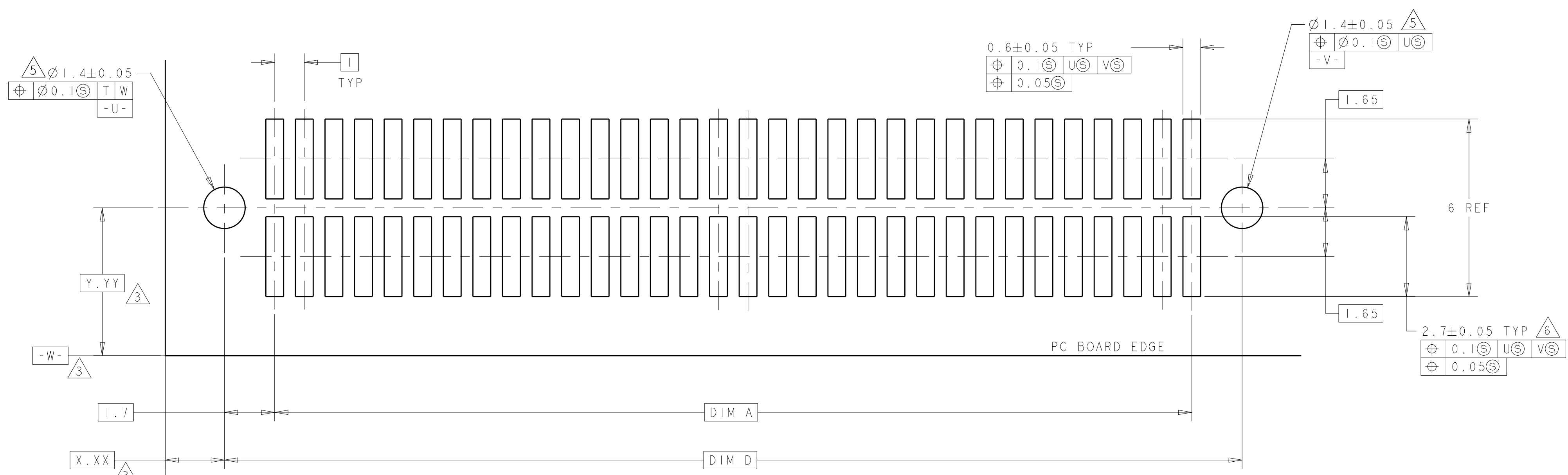
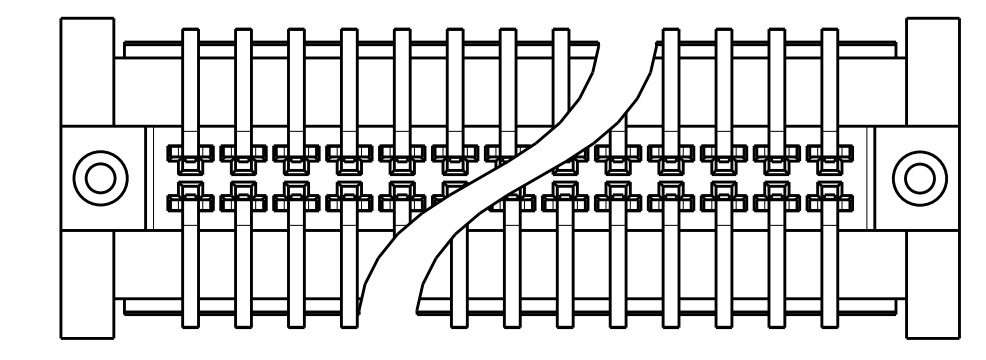
| LOC | DIST | REV | DATE | BY | APPV |
|-----|------|-----|-----------|-----|------|
| AD | 00 | F | 11FEB2015 | J.T | W.H |



8 STYLE A POST



9 STYLE B POST



RECOMMENDED PC BOARD LAYOUT

- 1 HOUSING MATERIAL: LIQUID CRYSTAL POLYMER. COLOR; BLACK. CONTACT MATERIAL: PHOSPHOR BRONZE.
- 2 CONTACT FINISH: NICKEL UNDERPLATE ALL OVER, MATING SURFACES PLATED TO MEET PL1 PERFORMANCE REQUIREMENTS OF INDUSTRY SPECIFICATION EIA-700AAAAB, SOLDER TAILS PLATED TIN-LEAD.
- 3 DATUM LOCATIONS AND BASIC DIMENSIONS TO BE ESTABLISHED BY THE CUSTOMER. CONSULT AMP ENGINEERING WHEN PLACING MULTIPLE CONNECTORS ON A PC BOARD.
- 4 PACKAGED IN TAPE ON REELS PER EIA-841.
- 5 1.5 MIN DIAMETER HOLE SHOULD BE USED IF USING POST STYLE "A" AND PLACING ON PCB WITH VACUUM PLACEMENT EQUIPMENT.
- 6 SHORTER SOLDER LANDS MAY BE USED PER EIA 700AAAAB, HOWEVER 2.7 LENGTH ASSURES OPTIMUM SOLDER FILLET.
- 7 CONTACT FINISH: 0.002 MINIMUM BRIGHT TIN-LEAD (93-7) ON SOLDER AREA, 0.00127 MINIMUM GOLD ON MATING AREA, BOTH OVER 0.00127 MINIMUM NICKEL ON ENTIRE CONTACT.
- 8 SQUARE AND DIAMOND SHAPED POSTS
- 9 ROUND SHAPED POSTS

| POST STYLE | FINISH | DIM D | DIM C | DIM B | DIM A | STACK HGTS | POS | PART NO |
|------------|--------|-------|-------|-------|-------|----------------|-----|------------|
| 9 | 7 | 44.4 | 45.9 | 44.58 | 41 | 10, 12, 13, 15 | 84 | 3-120527-2 |
| 9 | 7 | 34.4 | 35.9 | 34.58 | 31 | 10, 12, 13, 15 | 64 | 3-120527-1 |
| 9 | 2 | 44.4 | 45.9 | 44.58 | 41 | 10, 12, 13, 15 | 84 | 2-120527-2 |
| 9 | 2 | 34.4 | 35.9 | 34.58 | 31 | 10, 12, 13, 15 | 64 | 2-120527-1 |
| 8 | 7 | 44.4 | 45.9 | 44.58 | 41 | 10, 12, 13, 15 | 84 | 1-120527-2 |
| 8 | 7 | 34.4 | 35.9 | 34.58 | 31 | 10, 12, 13, 15 | 64 | 1-120527-1 |
| 8 | 2 | 44.4 | 45.9 | 44.58 | 41 | 10, 12, 13, 15 | 84 | 120527-2 |
| 8 | 2 | 34.4 | 35.9 | 34.58 | 31 | 10, 12, 13, 15 | 64 | 120527-1 |

THIS DRAWING IS A CONTROLLED DOCUMENT. DWG: J. REED 17FEB1997. CHK: L. VO 17FEB1997. APV: M. HORNUNG 25JAN2012.

STE TE Connectivity

NAME: PLUG ASSY, 1.0mm FH(IEEE 1386) CONNECTOR

PRODUCT SPEC: 502-1079

APPLICATION SPEC: 114-25045

SIZE: A100779 C=120527

SCALE: 10:1 SHEET 1 OF 1 REV F

Mouser Electronics

Authorized Distributor

Click to View Pricing, Inventory, Delivery & Lifecycle Information:

[TE Connectivity:](#)

[120527-1](#)