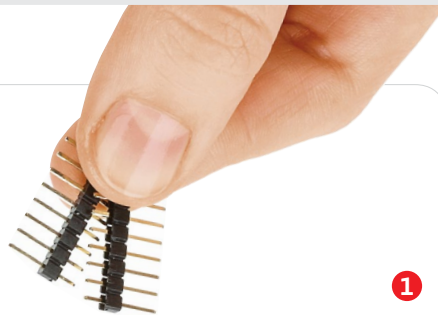


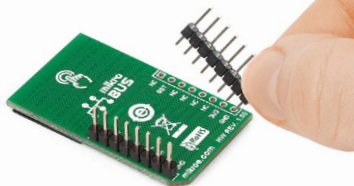
## Touchpad click

### 2. Soldering the headers

Before using your click board™, make sure to solder 1x8 male headers to both left and right side of the board. Two 1x8 male headers are included with the board in the package.

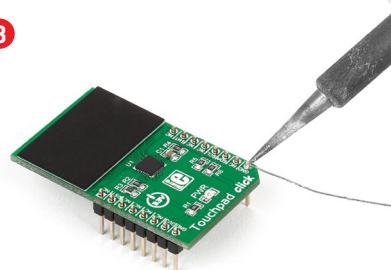


2

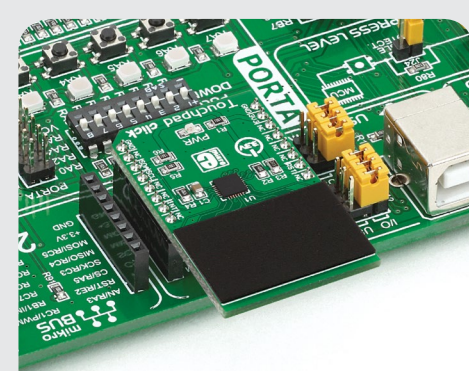


Turn the board upside down so that the bottom side is facing you upwards. Place shorter pins of the header into the appropriate soldering pads.

3



Turn the board upward again. Make sure to align the headers so that they are perpendicular to the board, then solder the pins carefully.

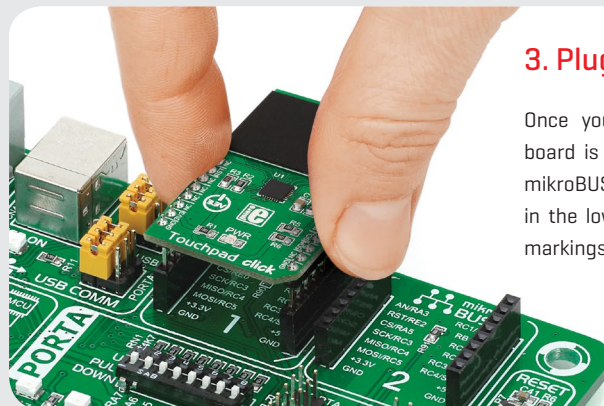


### 4. Essential features

The MTCH6102 device supports taps, double-taps, swipes and scrolling gestures. The small capacitive surface is optimized for single-finger applications. The sensor outputs 12-bit resolution coordinate data [the I2C interface supports up to 400 kbps transfer rates]. MTCH6102 also incorporates power-saving features, such as a configurable frame rate for sleep/idle modes, as well as a separate standby and active mode.

### 1. Introduction

Touchpad click is a capacitive touch input device driven by Microchip's low-powered **MTCH6102 controller**. The touchpad surface is covered with a sheet of black plastic to demonstrate the chip's support for cover layers [up to 3mm for plastic, 5mm for glass] Touchpad click communicates with the target MCU through the mikroBUS™ I2C interface [SCL and SDA pins], with additional functionality provided by the Interrupt and RSTL pins. Designed to use a 3.3V power supply.



### 3. Plugging the board in

Once you have soldered the headers your board is ready to be placed into the desired mikroBUS™ socket. Make sure to align the cut in the lower-right part of the board with the markings on the silkscreen at the mikroBUS™ socket. If all the pins are aligned correctly, push the board all the way into the socket.

**click**  
BOARDS™  
[www.mikroe.com](http://www.mikroe.com)

Touchpad click Manual v100



010000091166



# Mouser Electronics

Authorized Distributor

Click to View Pricing, Inventory, Delivery & Lifecycle Information:

[Mikroe:](#)

[MIKROE-1995](#)