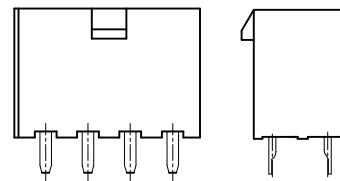
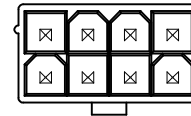
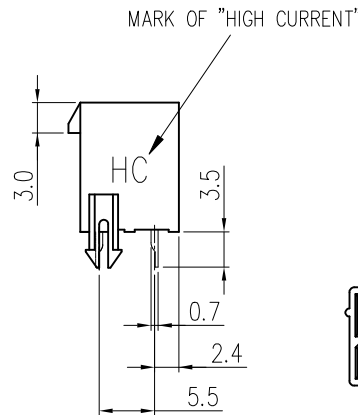
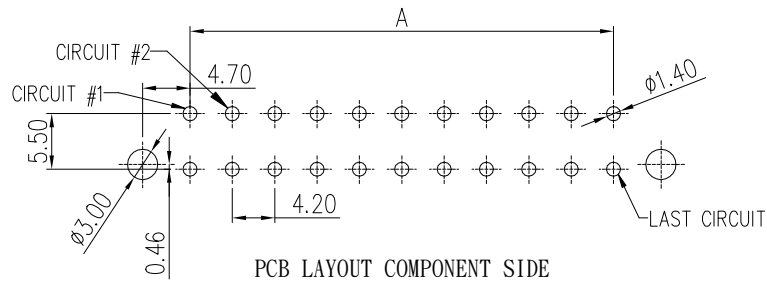
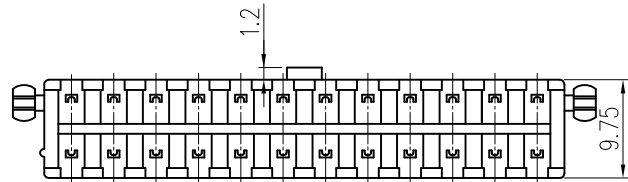
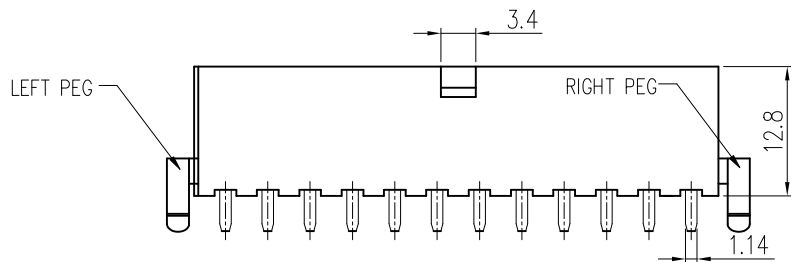
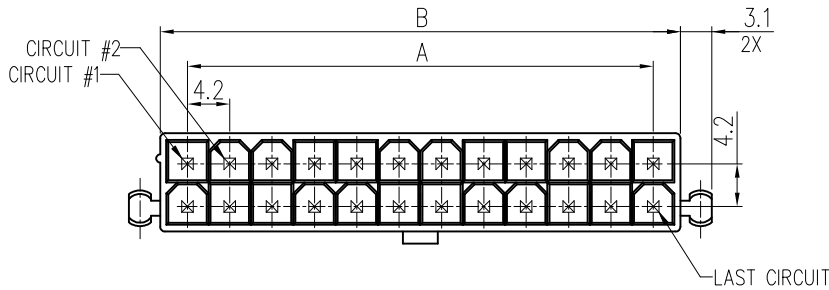


PRODUCT NUMBER
SEE PART NO. TABLE



NOTES:

- MATERIAL:
HSG: UL94V-0. OPTIONAL MATERIAL AND COLORS.
TERMINAL: HIGH CONDUCTIVITY COPPER ALLOY.
PLATING: OPTIONAL ON CONTACT AREA.
- THIS HEADER MATES WITH FCI RECEPTACLE WIRE CONNECTOR 10127815, CRIMP WITH 10130517 FOR HIGH CURRENT APPLICATION.
- PRODUCT SPECIFICATION: GS-12-1333.
- PACKAGE SPECIFICATION: GS-14-2362.
- THE HOUSING WILL WITHSTAND EXPOSURE TO 235°C PEAK TEMPERATURE FOR 5 SECONDS IN A WAVE SOLDER APPLICATION WITH NYLON66.
- THE HOUSING WILL WITHSTAND EXPOSURE TO 260 °C PEAK TEMPERATURE FOR 10 SECONDS IN A REFLOW OVEN. (FOR LCP ONLY)
- PART NUMBER SCHEME:
10131319- XX X X X X X LF

POS. CODE:
02: 2 POS.
04: 4 POS.
24: 24 POS.

PLATING CODE:
1: GOLD FLASH
2: TIN
4: 30u" GOLD PLATING

HSG COLOR:
1: NATURAL
2: BLACK

LOCATING PEG:
0: NONE(TRAY)
P: BOTH PEGS(TRAY)
T: NONE(TAPE&REEL)
R: BOTH PEGS(TAPE&REEL)

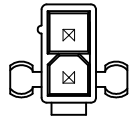
GLOW WIRE COMPATIBLE:
0: NO
G: YES

HSG MATERIAL:
1: NYLON 66
2: LCP

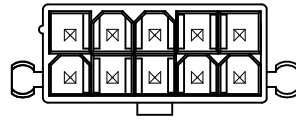
8. DIMENSIONAL & PART NO. TABLE:

PART NUMBER	POS.	A	B
10131319-02XX1XXLF	02	4.2	5.4
10131319-04XX1XXLF	04	8.4	9.6
10131319-06XX1XXLF	06	12.6	13.8
10131319-08XX1XXLF	08	16.8	18.0
10131319-10XX1XXLF	10	21.0	22.2
10131319-12XX1XXLF	12	25.2	26.4
10131319-14XX1XXLF	14	29.4	30.6
10131319-16XX1XXLF	16	33.6	34.8
10131319-18XX1XXLF	18	37.8	39.0
10131319-20XX1XXLF	20	42.0	43.2
10131319-22XX1XXLF	22	46.2	47.4
10131319-24XX1XXLF	24	50.4	51.6

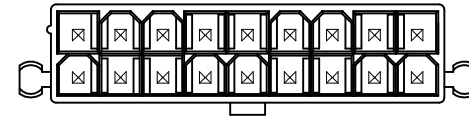
mat'l. code		surface	tolerance	projection	product family
ltr ecn no dr date		tolerances unless otherwise specified		mm	MINITEK PWR4.2 HCC
A	ELX-T-19532	TAI	2014-08-29		
B	ELX-T-21754	TAI	2014-11-24	scale	dwg no
C	ELX-T-25072	TAI	2015-08-24		
D	ELX-N-26672	TONY	2016-10-03	type	Product Customer Drawing
E	ELX-N-27202	TONY	2017-03-14		
F	ELX-N-27450	TONY	2017-06-12	revision	g
G	ELX-N-27450	TONY	2017-07-13		
sheet		index		sheet	



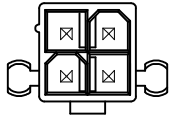
2 POS



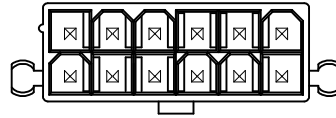
10 POS



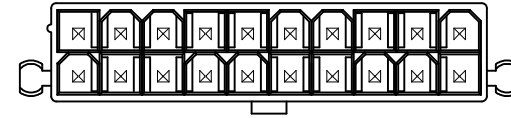
18 POS



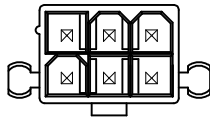
4 POS



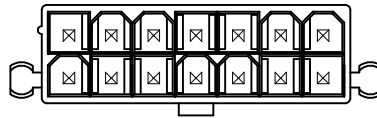
12 POS



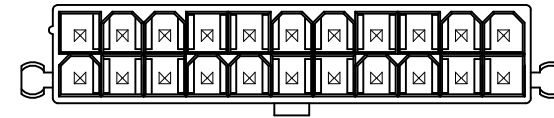
20 POS



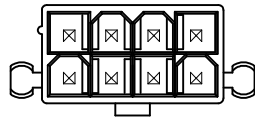
6 POS



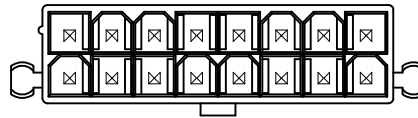
14 POS



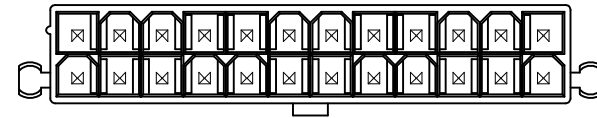
22 POS



8 POS



16 POS



24 POS

mat'l. code		surface <input checked="" type="checkbox"/> tolerance		projection		product family MINITEK PWR4.2 HCC		
ltr	ecn no	dr	date	tolerances unless otherwise specified		title		
				angles	linear	MINITEK PWR4.2 HIGH CURRENT CONNECTOR		
					X.X ±0.4	V/T DIP HEADER		
					X.XX ±0.30	scale N.T.S.		
				x±1*		dwg no sheet 2 of 2 size		
		dr	KENNY TAI	2014-08-12		10131319 A4		
		enr	KENNY TAI	2014-08-12		type Product Customer Drawing		
		chr	KENNY TAI	2014-08-12				
		appd	PM ZHENG	2014-08-29				
sheet index	revision sheet	g	g					
	1 2							

Mouser Electronics

Authorized Distributor

Click to View Pricing, Inventory, Delivery & Lifecycle Information:

[FCI / Amphenol:](#)

[10131319-0821200LF](#) [10131319-044110PLF](#) [10131319-024110PLF](#) [10131319-084110PLF](#) [10131319-104120KLF](#)
[10131319-064110PLF](#)