

Keymodule

Cherry GmbH
Cherrystrasse
D-91275 Auerbach/Opf.

Phone: (0 96 43) 18 - 0

Hotline: (0 96 43) 18 - 2 06

Fax: (0 96 43) 18 - 15 45

Internet: www.cherry.de

800407

The manufacturer accepts
no liability for errors or
changes in specification.

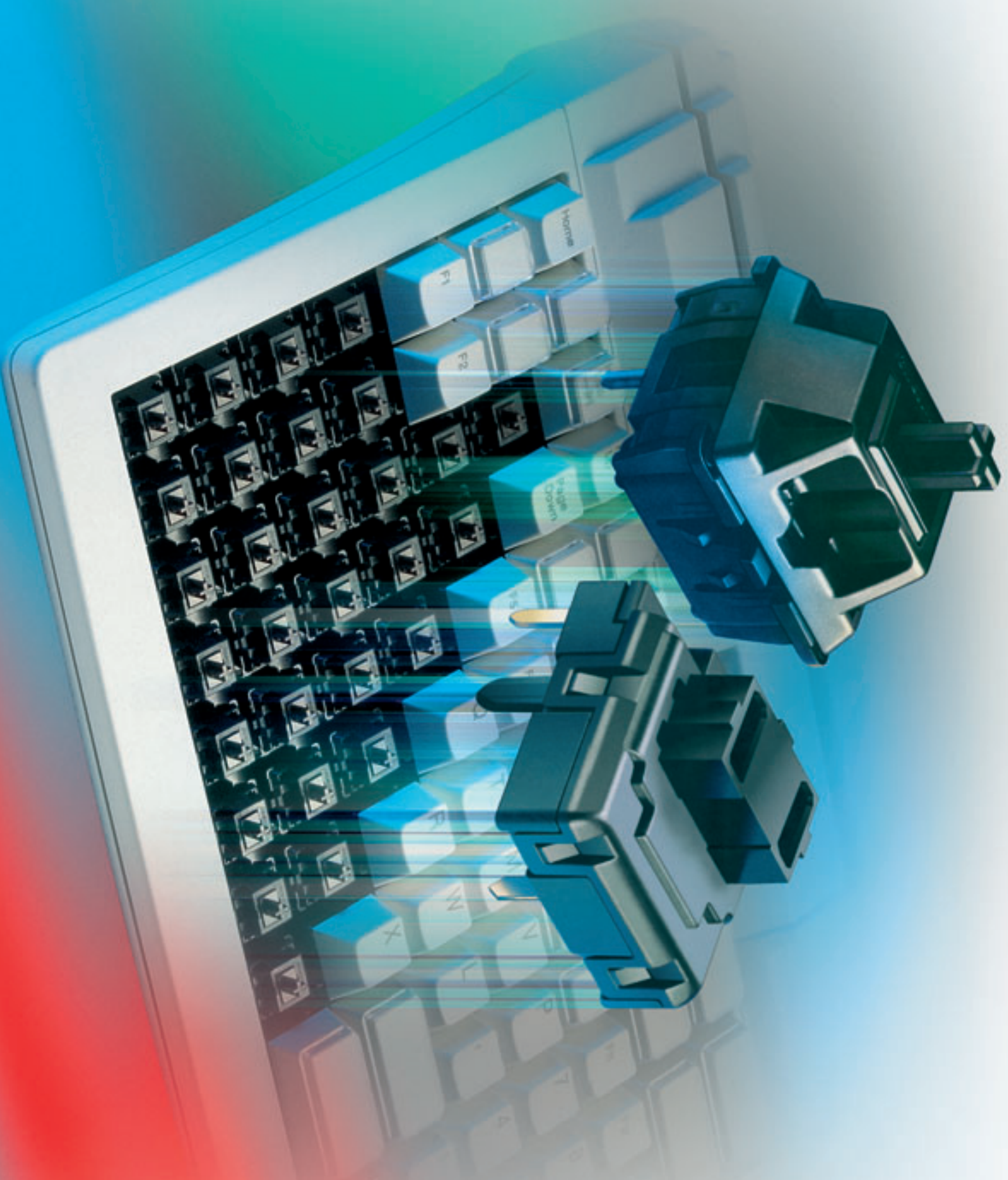
Printed in Germany.

45392530

E, Juni 2002

3, Mün

© 2002 Cherry GmbH



Contents

General Information	2
Technical Data	3
Keymodule ML	4
Keymodule MX	6

Technical Data

	Model ML	Model MX
Electrical Characteristics		
Switching voltage	12 V AC/DC	12 V AC/DC max, 2 V DC min
Switching current	10 mA AC/DC max, 10 μ A DC min.	10 mA AC/DC max, 10 μ A DC min.
Contact resistance	\leq 200 m Ω (typically, 25 m)	\leq 200 m Ω (typically 25 m)
Capacity at 1kHz	\leq pF	\leq pF
Dielectric strength	500 V/50Hz	500 V/50Hz
Isolation resistance (new)	100 M Ω	100 M Ω
Durability at 5V, 1mA linear pressure point	–	50x10 ⁶ linear
Durability at 5V, 1mA pressure point	20x10 ⁶	50x10 ⁶ pressure point
Service life at 5V, 1mA latched pushbutton MCBF	–	0,5x10 ⁶ latched pushbutton 1x10 ⁶

Mechanical Characteristics

Number of contacts	Single-gap make contact element	Single-gap make contact element
Action	Pressure point	Linear, pressure point, latching
Actuator travel	3.0 -0.5 mm	4.0 -0.4 mm Pulse / 4.2 \pm 0.3 mm latching
Pre-travel	1.5 \pm 0.5 mm	2 \pm 0.6 mm Pulse / 1.4 \pm 0.4 mm latching
Initial force	30 cN min	40 cN
Actuation force	45 \pm 20 cN	60 +20 cN linear and latching;
Pressure point force	50 \pm 20 cN	45 \pm 20 cN pressure point
Bounce time during actuation with 0.4 m/s	\leq 5 ms	\leq 5 ms
Standard lead spacing	19.05 mm (16 mm min)	19.05 mm (16 mm min)
Fastening	Fixing pins in the printed circuit board	Snap fastening in frame or Fixing pins in the printed circuit board
Lighting (optional)	–	LED in red, green or yellow optional
Decoupling diode	–	–
Wire jumper	–	–

Materials

Insulation materials	Thermoplastics (min UL 94 HB)	Thermoplastics UL listed
Spring	Stainless steel	Stainless steel
Contacts	AuAg 10	High-quality gold alloy

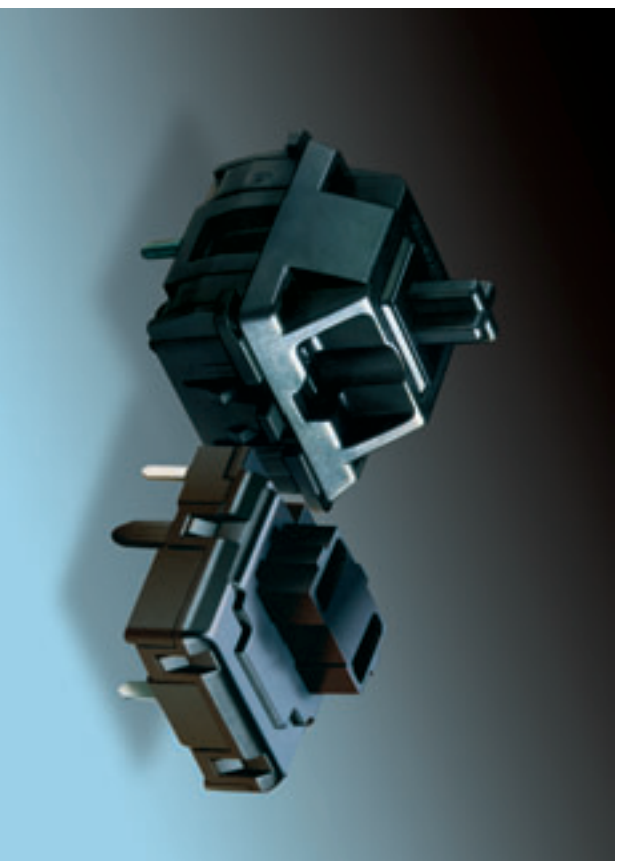
Other Characteristics

Protection class	IP 40	IP 40
Operating temperature	-10 °C to +70 °C	-10 °C to +70 °C
Storage temperature	-40 °C to +70 °C	-40 °C to +70 °C
Humidity (without condensation)	5% to 95%	5% to 95%
Soldering capability	DIN IEC 68	DIN IEC 68
Soldering temperature/duration	260 °C / 5s	260 °C / 5s

Keymodule

Cherry key modules are mechanical input elements with a single-gap make contact element. Low assembly height, pleasant feel and excellent contact reliability thanks to Gold-Crosspoint contact technology allow flexible designing of low-cost keypads and keyboards. Depending on the key cap, different lead spacings are also possible.

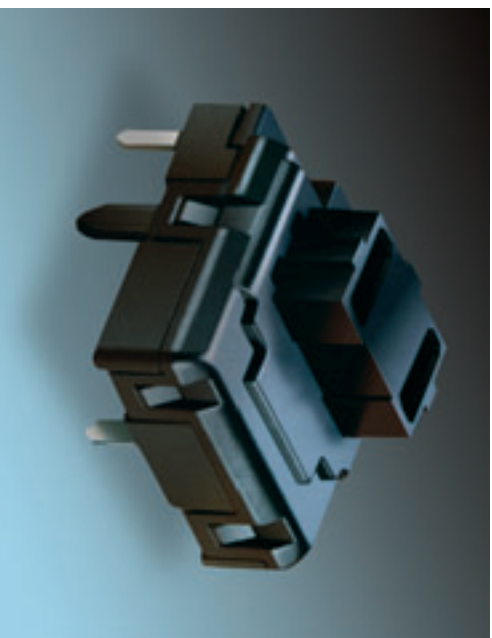
Very short bounce times, very pleasant feel and exceptionally high reliability and durability pave the way for a wide range of applications.



Keymodule ML

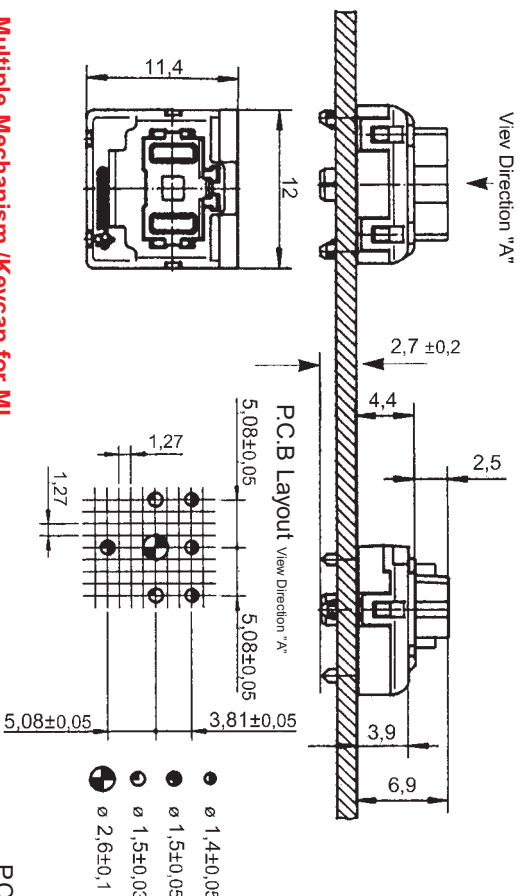
Description

The Cherry ML key module is a mechanical switching element using single-gap make contact element in Gold-Crosspoint contact technology. Its pleasant feel makes the module particularly suitable for low-cost construction of keyboards and keypads with great diversity and very low height. A multitude of different cap shapes allows flexible designs. Very short bounce time, reliable stroke, pleasant feel and enormous cost-savings pave the way for a wide range of applications.

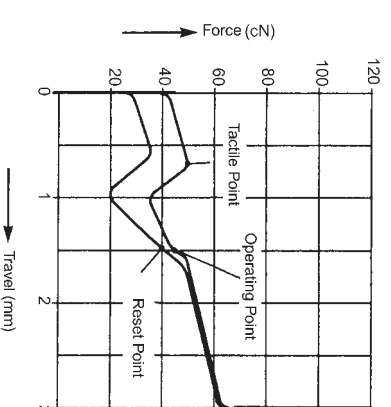


Flat key modules ML

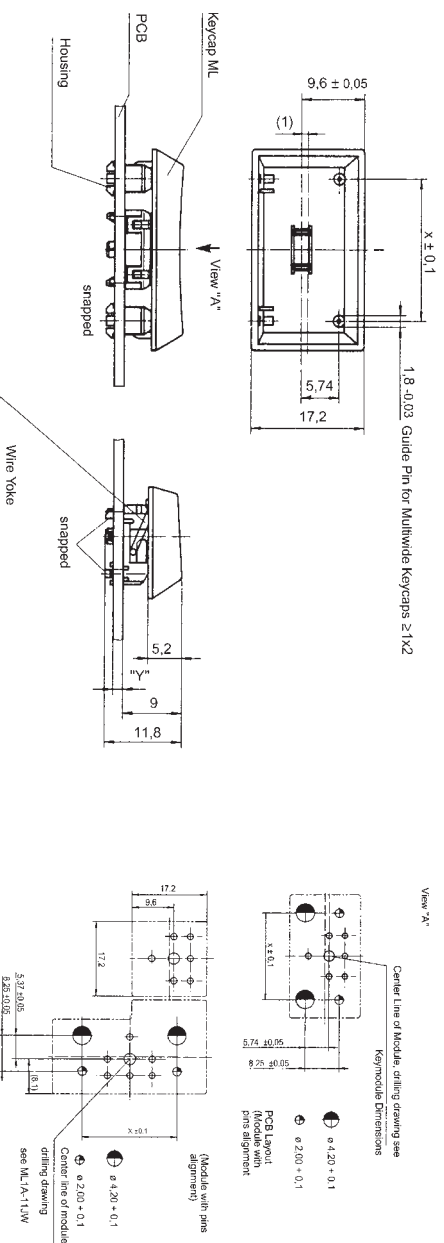
Keymodule Dimensions



Force Travel Diagram



P.C.B. Layout



Accessories:

Empty housing Stock code 609-5292

Keymodule	Keycap Format	Ordering-Numbers	beige-grey	Dimension X	Bar	Assembly number (mechanical parts and bar)
	1x1	6753-0001	6753-0002	-	-	-
	1x0,84	6743-0001	6743-0002	-	-	-
	1x1,25	6753-0008	6753-0003	-	-	-
	1x2	6767-0004	6767-0005	25,6	614-5007	G99-1303 ZUB
	1,25x2x1 vertical	6767-0002	6767-0003	-	-	-
	1,5x2x1,25 vertical	6767-0007	6767-0008	25,6	614-5007	G99-1303 ZUB
	1x1,5	6763-0011	6763-0010	17,45	614-5004	G99-1300 ZUB
	1x1,53	6763-0004	6763-0003	17,45	614-5004	G99-1300 ZUB
	1x1,75	6763-0008	6763-0001	21,65	614-5005	G99-1301 ZUB
	1x2	6763-0020	6763-0021	25,6	614-5007	G99-1303 ZUB
	1x2,25	6763-0028	-	-	-	-
	1x5	6763-0002	6763-0009	116,15	614-5010	G99-1370 ZUB
	1x7	6763-0029	-	116,15	614-5010	G99-1370 ZUB

Ordering code:

① ML ② 1 ③ A - ④ 1 ⑤ 1 ⑥ N ⑦ W

- ① Series
 - ② Contact material
 - ③ Contact mounting
 - ④ Actuation
 - ⑤ Cap support
 - ⑥ Mounting
 - ⑦ Fixing pins
- Type ML
 1 = AuAg 10 (max. 10mA, 12V)
 A = 1 contact making element
 1 = Linear feel
 1 = Standard, straight for 8 mm cap
 N = Without jumper
 J = With Jumper
 W = With Pins

