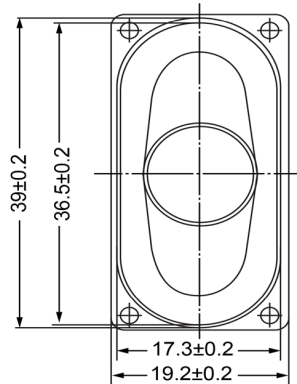
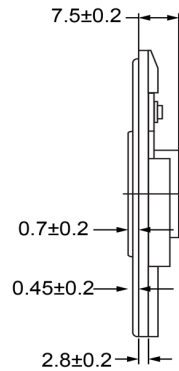


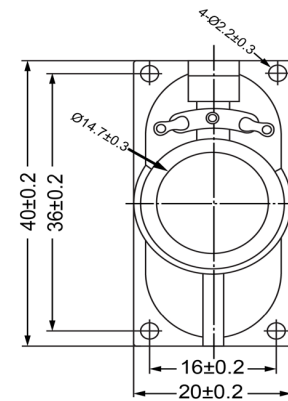
TOP VIEW




SIDE VIEW



BOTTOM VIEW



Specifications			Notes	Revision History						
Description	Value	Unit		Version	Description		Date	Approved		
Shape	Oval		1) All dimensions are in mm unless otherwise noted 2) All parts meet RoHS	1	Released from Engineering		10/21/2013	J.S		
Resonant Frequency	600	(Hz)								
Frequency Range	600 ~ 20,000	(Hz)								
SPL @ 10cm	90	(dBA)								
Impedance	16	(Ohm)								
Cone Material	Mylar									
Nominal Power	0.25	(W)								
Max Power	0.5	(W)								
Mount Type	Frame									
Operating Temperature	-25 ~ +55	°C								
Storage Temperature	-25 ~ +55	°C								
Weight	6.3	(g)								
 DB UNLIMITED			Dynamic Speaker			SM400616-1				

Additional considerations can be found at www.dbunlimitedco.com/technical-articles.