

# UK 10-DREHSILA 250 (6,3X32) - Fuse modular terminal block



3005662

<https://www.phoenixcontact.com/us/products/3005662>

Please be informed that the data shown in this PDF document is generated from our Online Catalog. Please find the complete data in the user documentation. Our General Terms of Use for Downloads are valid.



Fuse terminal block for cartridge fuse insert, cross section: 0.5 - 16 mm<sup>2</sup>, AWG: 24 - 6, width: 12 mm, color: black

## Your advantages

- Can be bridged with FBI ... fixed bridge

## Commercial Data

Item number	3005662
Packing unit	1 pc
Minimum order quantity	1 pc
Sales Key	BE12
Product Key	BE1235
Catalog Page	Page 497 (C-1-2019)
GTIN	4017918091255
Weight per Piece (including packing)	35.38 g
Weight per Piece (excluding packing)	34.89 g
Customs tariff number	85369095
Country of origin	PL

# UK 10-DREHSILA 250 (6,3X32) - Fuse modular terminal block



3005662

<https://www.phoenixcontact.com/us/products/3005662>

## Technical Data

### Product properties

Product type	Fuse terminal block
Number of connections	2
Number of rows	1
Potentials	1

### Insulation characteristics

Overvoltage category	III
Degree of pollution	3

### Electrical properties

Fuse type	Glass / ceramics / ...
Rated surge voltage	4 kV
Maximum power dissipation for nominal condition	1.82 W
Fuse	G / 6,3 x 32
LED voltage range	110 V AC/DC ... 250 V AC/DC
LED current range	0.5 mA ... 1.1 mA
Maximum power dissipation	max. 2.5 W (with single arrangement of the fuse terminal block in the event of overload) max. 2.5 W (With interconnected arrangement of several fuse terminal blocks in the event of overload) max. 4 W (with single arrangement of the fuse terminal block in the event of a short-circuit) max. 2.5 W (With interconnected arrangement of several fuse terminal blocks in the event of a short-circuit)

### Input data

LED voltage range	110 V AC/DC ... 250 V AC/DC
-------------------	-----------------------------

### Connection data

Number of connections per level	2
Nominal cross section	10 mm <sup>2</sup>
Rated cross section AWG	6

### Level 1 above 1 below 1

Screw thread	M4
Tightening torque	1.5 ... 1.8 Nm
Stripping length	11 mm
Internal cylindrical gage	B6
Connection in acc. with standard	IEC 60947-7-3
Conductor cross section rigid	0.5 mm <sup>2</sup> ... 16 mm <sup>2</sup>
Cross section AWG	20 ... 6 (converted acc. to IEC)
Conductor cross section flexible	0.5 mm <sup>2</sup> ... 16 mm <sup>2</sup>
Conductor cross section, flexible [AWG]	20 ... 6 (converted acc. to IEC)

# UK 10-DREHSILA 250 (6,3X32) - Fuse modular terminal block



3005662

<https://www.phoenixcontact.com/us/products/3005662>

Conductor cross-section flexible (ferrule without plastic sleeve)	0.5 mm <sup>2</sup> ... 10 mm <sup>2</sup>
Flexible conductor cross section (ferrule with plastic sleeve)	0.5 mm <sup>2</sup> ... 10 mm <sup>2</sup>
Cross-section with insertion bridge, rigid	10 mm <sup>2</sup>
Cross-section with insertion bridge, flexible	10 mm <sup>2</sup>
2 conductors with same cross section, solid	0.5 mm <sup>2</sup> ... 4 mm <sup>2</sup>
2 conductors with same cross section, flexible	0.5 mm <sup>2</sup> ... 4 mm <sup>2</sup>
2 conductors with same cross section, flexible, with ferrule without plastic sleeve	0.5 mm <sup>2</sup> ... 4 mm <sup>2</sup>
2 conductors with the same cross section, flexible, with TWIN ferrule with plastic sleeve	0.5 mm <sup>2</sup> ... 10 mm <sup>2</sup>
Nominal current	10 A
Maximum load current	10 A
Nominal voltage	400 V
	800 V (As a disconnect terminal block)

## Dimensions

Width	12 mm
Height NS 35/15	64.7 mm
Height NS 35/7,5	57.2 mm
Height	2.323 "
Height NS 32	62.2 mm
Length	62 mm

## Material specifications

Color	black
Flammability rating according to UL 94	V2
Insulating material group	I
Insulating material	PA
Static insulating material application in cold	-60 °C
Temperature index of insulation material (DIN EN 60216-1 (VDE 0304-21))	130 °C
Relative insulation material temperature index (Elec., UL 746 B)	130 °C
Fire protection for rail vehicles (DIN EN 45545-2) R22	HL 1 - HL 3
Fire protection for rail vehicles (DIN EN 45545-2) R23	HL 1 - HL 3
Fire protection for rail vehicles (DIN EN 45545-2) R24	HL 1 - HL 3
Fire protection for rail vehicles (DIN EN 45545-2) R26	HL 1 - HL 3
Calorimetric heat release NFPA 130 (ASTM E 1354)	28 MJ/kg
Surface flammability NFPA 130 (ASTM E 162)	passed
Specific optical density of smoke NFPA 130 (ASTM E 662)	passed
Smoke gas toxicity NFPA 130 (SMP 800C)	passed

## Mechanical properties

### Mechanical data

Open side panel	No
-----------------	----

# UK 10-DREHSILA 250 (6,3X32) - Fuse modular terminal block



3005662

<https://www.phoenixcontact.com/us/products/3005662>

## Environmental and real-life conditions

### Ambient conditions

Ambient temperature (operation)	-60 °C ... 105 °C (max. short-term operating temperature RTI Elec.)
Ambient temperature (storage/transport)	-25 °C ... 60 °C (for a short time, not exceeding 24 h, -60 °C to +70 °C)
Ambient temperature (assembly)	-5 °C ... 70 °C
Ambient temperature (actuation)	-5 °C ... 70 °C
Permissible humidity (storage/transport)	30 % ... 70 %

## Standards and regulations

Connection in acc. with standard	IEC 60947-7-3
----------------------------------	---------------

## Mounting

Mounting type	NS 35/7,5
	NS 35/15
	NS 32

# UK 10-DREHSILA 250 (6,3X32) - Fuse modular terminal block




3005662


<https://www.phoenixcontact.com/us/products/3005662>

## Approvals

 <b>IECEE CB Scheme</b> Approval ID: NL-56826/A1				
	Nominal Voltage $U_N$	Nominal Current $I_N$	Cross Section AWG	Cross Section $mm^2$
	800 V	-	-	0.5 - 16

 <b>EAC</b> Approval ID: RU C-DE.BL08.B.00534				
---	--	--	--	--

 <b>KEMA-KEUR</b> Approval ID: 71-119846				
	Nominal Voltage $U_N$	Nominal Current $I_N$	Cross Section AWG	Cross Section $mm^2$
	-	10 A	-	0.5 - 16

 <b>cULus Recognized</b> Approval ID: E60425				
	Nominal Voltage $U_N$	Nominal Current $I_N$	Cross Section AWG	Cross Section $mm^2$
Use group B	300 V	20 A	24 - 6	-
Use group C	300 V	20 A	24 - 6	-
Use group F	500 V	20 A	24 - 6	-

# UK 10-DREHSILA 250 (6,3X32) - Fuse modular terminal block



3005662

<https://www.phoenixcontact.com/us/products/3005662>

## Classifications

### ECLASS

ECLASS-11.0	27141116
ECLASS-12.0	27141116
ECLASS-13.0	27250113

### ETIM

ETIM 8.0	EC000899
----------	----------

### UNSPSC

UNSPSC 21.0	39121400
-------------	----------

# UK 10-DREHSILA 250 (6,3X32) - Fuse modular terminal block



3005662

<https://www.phoenixcontact.com/us/products/3005662>

## Environmental Product Compliance


REACH SVHC	Lead 7439-92-1
China RoHS	Environmentally Friendly Use Period = 50 years
	For information on hazardous substances, refer to the manufacturer's declaration available under "Downloads"

# UK 10-DREHSILA 250 (6,3X32) - Fuse modular terminal block

3005662

<https://www.phoenixcontact.com/us/products/3005662>

## Accessories

 Note: Applying some accessories below might limit this product.

### FBI 2-12 - Fixed bridge

0200075

<https://www.phoenixcontact.com/us/products/0200075>

Fixed bridge, pitch: 12 mm, number of positions: 2, length: 8 mm, color: silver



### FBI 10-12 - Fixed bridge

0203454

<https://www.phoenixcontact.com/us/products/0203454>

Fixed bridge, pitch: 12 mm, number of positions: 10, length: 8 mm, color: silver



 Max. current carrying capacity: 63 A



# UK 10-DREHSILA 250 (6,3X32) - Fuse modular terminal block

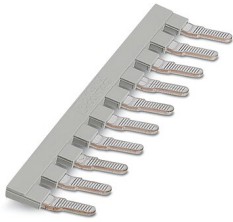
3005662

<https://www.phoenixcontact.com/us/products/3005662>


## EB 10-12 - Insertion bridge

3006137

<https://www.phoenixcontact.com/us/products/3006137>



Insertion bridge, pitch: 12 mm, number of positions: 10, color: gray

 Max. current carrying capacity: 63 A

---

## SZS 1,0X4,0 VDE - Screwdriver

1205066

<https://www.phoenixcontact.com/us/products/1205066>



Screwdriver, slot-headed, VDE insulated, size: 1.0 x 4.0 x 100 mm, 2-component grip, with non-slip grip

# UK 10-DREHSILA 250 (6,3X32) - Fuse modular terminal block



3005662

<https://www.phoenixcontact.com/us/products/3005662>

## NS 32 PERF 2000MM-VPE 10 - DIN rail perforated

1201002

<https://www.phoenixcontact.com/us/products/1201002>



DIN rail perforated, acc. to EN 60715, material: Steel, galvanized, passivated with a thick layer, G profile, color: silver, Pack of 10 (20 m)

---

## NS 32 UNPERF 2000MM-VPE 10 - DIN rail, unperforated

1201015

<https://www.phoenixcontact.com/us/products/1201015>



DIN rail, unperforated, acc. to EN 60715, material: Steel, galvanized, passivated with a thick layer, G profile, color: silver, Pack of 10 (20 m)

# UK 10-DREHSILA 250 (6,3X32) - Fuse modular terminal block



3005662

<https://www.phoenixcontact.com/us/products/3005662>

## NS 35/ 7,5 PERF 2000MM - DIN rail perforated

0801733

<https://www.phoenixcontact.com/us/products/0801733>



DIN rail perforated, acc. to EN 60715, material: Steel, galvanized, passivated with a thick layer, Standard profile, color: silver, Pack of 25 (50 m)

---

## NS 35/ 7,5 UNPERF 2000MM - DIN rail, unperforated

0801681

<https://www.phoenixcontact.com/us/products/0801681>



DIN rail, unperforated, acc. to EN 60715, material: Steel, galvanized, passivated with a thick layer, Standard profile, color: silver, Pack of 25 (50 m)

# UK 10-DREHSILA 250 (6,3X32) - Fuse modular terminal block



3005662

<https://www.phoenixcontact.com/us/products/3005662>

## NS 35/ 7,5 WH PERF 2000MM - DIN rail perforated

1204119

<https://www.phoenixcontact.com/us/products/1204119>



DIN rail perforated, acc. to EN 60715, material: Steel, Galvanized, white passivated, Standard profile, color: silver, Pack of 25 (50 m)

---

## NS 35/ 7,5 WH UNPERF 2000MM-VPE 10 - DIN rail, unperforated

1204122

<https://www.phoenixcontact.com/us/products/1204122>



DIN rail, unperforated, acc. to EN 60715, material: Steel, Galvanized, white passivated, Standard profile, color: silver, Pack of 10 (20 m)

# UK 10-DREHSILA 250 (6,3X32) - Fuse modular terminal block



3005662

<https://www.phoenixcontact.com/us/products/3005662>

## NS 35/ 7,5 AL UNPERF 2000MM - DIN rail, unperforated

0801704

<https://www.phoenixcontact.com/us/products/0801704>



DIN rail, unperforated, acc. to EN 60715, material: Aluminum, uncoated, Standard profile, color: silver, Pack of 25 (50 m)

---

## NS 35/ 7,5 ZN PERF 2000MM - DIN rail perforated

1206421

<https://www.phoenixcontact.com/us/products/1206421>



DIN rail perforated, acc. to EN 60715, material: Steel, galvanized, Standard profile, color: silver, Pack of 25 (50 m)

# UK 10-DREHSILA 250 (6,3X32) - Fuse modular terminal block



3005662

<https://www.phoenixcontact.com/us/products/3005662>

## NS 35/ 7,5 ZN UNPERF 2000MM - DIN rail, unperforated

1206434

<https://www.phoenixcontact.com/us/products/1206434>



DIN rail, unperforated, acc. to EN 60715, material: Steel, galvanized, Standard profile, color: silver, Pack of 25 (50 m)

---

## NS 35/ 7,5 CU UNPERF 2000MM-VPE 10 - DIN rail, unperforated

0801762

<https://www.phoenixcontact.com/us/products/0801762>



DIN rail, unperforated, acc. to EN 60715, material: Copper, uncoated, Standard profile, color: copper-colored, Pack of 10 (20 m)

# UK 10-DREHSILA 250 (6,3X32) - Fuse modular terminal block



3005662

<https://www.phoenixcontact.com/us/products/3005662>

## NS 35/ 7,5 CAP - End cap

1206560

<https://www.phoenixcontact.com/us/products/1206560>

DIN rail end piece, for DIN rail NS 35/7.5



---

## NS 35/15 PERF 2000MM - DIN rail perforated

1201730

<https://www.phoenixcontact.com/us/products/1201730>



DIN rail perforated, similar to EN 60715, material: Steel, galvanized, passivated with a thick layer, Standard profile, color: silver, Pack of 25 (50 m)

# UK 10-DREHSILA 250 (6,3X32) - Fuse modular terminal block



3005662

<https://www.phoenixcontact.com/us/products/3005662>

## NS 35/15 UNPERF 2000MM - DIN rail, unperforated

1201714

<https://www.phoenixcontact.com/us/products/1201714>



DIN rail, unperforated, similar to EN 60715, material: Steel, galvanized, passivated with a thick layer, Standard profile, color: silver, Pack of 25 (50 m)

---

## NS 35/15 WH PERF 2000MM - DIN rail perforated

0806602

<https://www.phoenixcontact.com/us/products/0806602>



DIN rail perforated, similar to EN 60715, material: Steel, Galvanized, white passivated, Standard profile, color: white, Pack of 25 (50 m)



# UK 10-DREHSILA 250 (6,3X32) - Fuse modular terminal block



3005662

<https://www.phoenixcontact.com/us/products/3005662>

## NS 35/15 WH UNPERF 2000MM-VPE 10 - DIN rail, unperforated

1204135

<https://www.phoenixcontact.com/us/products/1204135>



DIN rail, unperforated, similar to EN 60715, material: Steel, Galvanized, white passivated, Standard profile, color: silver, Pack of 10 (20 m)

---

## NS 35/15 AL UNPERF 2000MM - DIN rail, unperforated

1201756

<https://www.phoenixcontact.com/us/products/1201756>



DIN rail, unperforated, similar to EN 60715, material: Aluminum, uncoated, Standard profile, color: silver

# UK 10-DREHSILA 250 (6,3X32) - Fuse modular terminal block



3005662

<https://www.phoenixcontact.com/us/products/3005662>

## NS 35/15 ZN PERF 2000MM - DIN rail perforated

1206599

<https://www.phoenixcontact.com/us/products/1206599>



DIN rail perforated, similar to EN 60715, material: Steel, galvanized, Standard profile, color: silver, Pack of 25 (50 m)

---

## NS 35/15 ZN UNPERF 2000MM - DIN rail, unperforated

1206586

<https://www.phoenixcontact.com/us/products/1206586>



DIN rail, unperforated, similar to EN 60715, material: Steel, galvanized, Standard profile, color: silver, Pack of 25 (50 m)

# UK 10-DREHSILA 250 (6,3X32) - Fuse modular terminal block



3005662

<https://www.phoenixcontact.com/us/products/3005662>

## NS 35/15 CU UNPERF 2000MM-VPE 10 - DIN rail, unperforated

1201895

<https://www.phoenixcontact.com/us/products/1201895>



DIN rail, unperforated, similar to EN 60715, material: Copper, uncoated, Standard profile, color: copper-colored, Pack of 10 (20 m)

---

## NS 35/15 CAP - End cap

1206573

<https://www.phoenixcontact.com/us/products/1206573>

DIN rail end piece, for DIN rail NS 35/15



# UK 10-DREHSILA 250 (6,3X32) - Fuse modular terminal block



3005662

<https://www.phoenixcontact.com/us/products/3005662>

## NS 35/15-2,3 UNPERF 2000MM-VPE 10 - DIN rail, unperforated

1201798

<https://www.phoenixcontact.com/us/products/1201798>



DIN rail, unperforated, acc. to EN 60715, material: Steel, galvanized, passivated with a thick layer, Standard profile 2.3 mm, color: silver, Pack of 10 (20 m)

---

## ZB 6:UNBEDRUCKT - Zack marker strip

1051003

<https://www.phoenixcontact.com/us/products/1051003>



Zack marker strip, Strip, white, unlabeled, can be labeled with: PLOTMARK, CMS-P1-PLOTTER, mounting type: snapped, for terminal block width: 6.2 mm, lettering field size: 6.15 x 10.5 mm, Number of individual labels: 10

# UK 10-DREHSILA 250 (6,3X32) - Fuse modular terminal block



3005662

<https://www.phoenixcontact.com/us/products/3005662>

## ZB 6 CUS - Zack marker strip

0824992

<https://www.phoenixcontact.com/us/products/0824992>



Zack marker strip, can be ordered: Strip, white, labeled according to customer specifications, mounting type: snap into tall marker groove, for terminal block width: 6.2 mm, lettering field size: 6.15 x 10.5 mm, Number of individual labels: 10

---

## ZB 6,LGS:FORTL.ZAHLEN - Zack marker strip

1051016

<https://www.phoenixcontact.com/us/products/1051016>



Zack marker strip, Strip, white, labeled, can be labeled with: CMS-P1-PLOTTER, printed horizontally: consecutive numbers 1 ... 10, 11 ... 20, etc. up to 491 ... 500, mounting type: snapped, for terminal block width: 6.2 mm, lettering field size: 6.15 x 10.5 mm, Number of individual labels: 10

# UK 10-DREHSILA 250 (6,3X32) - Fuse modular terminal block



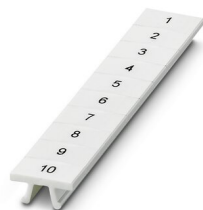
3005662

<https://www.phoenixcontact.com/us/products/3005662>

## ZB 6,QR:FORTL.ZAHLEN - Zack marker strip

1051029

<https://www.phoenixcontact.com/us/products/1051029>



Zack marker strip, Strip, white, labeled, can be labeled with: CMS-P1-PLOTTER, Printed vertically: consecutive numbers 1 ... 10, 11 ... 20, etc. up to 491 ... 500, mounting type: snapped, for terminal block width: 6.2 mm, lettering field size: 6.15 x 10.5 mm, Number of individual labels: 10

---

## ZB 6,LGS:GLEICHE ZAHLEN - Zack marker strip

1051032

<https://www.phoenixcontact.com/us/products/1051032>



Zack marker strip, Strip, white, labeled, can be labeled with: CMS-P1-PLOTTER, printed horizontally: Identical numbers 1 or 2, etc. up to 100, mounting type: snapped, for terminal block width: 6.2 mm, lettering field size: 6.15 x 10.5 mm, Number of individual labels: 10

# UK 10-DREHSILA 250 (6,3X32) - Fuse modular terminal block

3005662

<https://www.phoenixcontact.com/us/products/3005662>

## ZB 6,LGS:L1-N,PE - Marker for terminal blocks

1051414

<https://www.phoenixcontact.com/us/products/1051414>



Marker for terminal blocks, Strip, white, labeled, can be labeled with: CMS-P1-PLOTTER, horizontal: L1, L2, L3, N, PE, L1, L2, L3, N, PE, mounting type: snapped, for terminal block width: 6.2 mm, lettering field size: 6.15 x 10.5 mm, Number of individual labels: 10

---

## ZB 6,LGS:U-N - Marker for terminal blocks

1051430

<https://www.phoenixcontact.com/us/products/1051430>



Marker for terminal blocks, Strip, white, labeled, can be labeled with: CMS-P1-PLOTTER, printed horizontally: U, V, W, N, GND, U, V, W, N, GND, mounting type: snapped, for terminal block width: 6.2 mm, lettering field size: 6.15 x 10.5 mm, Number of individual labels: 10

# UK 10-DREHSILA 250 (6,3X32) - Fuse modular terminal block



3005662

<https://www.phoenixcontact.com/us/products/3005662>

## UC-TM 6 - Marker for terminal blocks

0818085

<https://www.phoenixcontact.com/us/products/0818085>



Marker for terminal blocks, Sheet, white, unlabeled, can be labeled with: BLUEMARK ID COLOR, BLUEMARK ID, BLUEMARK CLED, PLOTMARK, CMS-P1-PLOTTER, mounting type: snapped, for terminal block width: 6.2 mm, lettering field size: 5.6 x 10.5 mm, Number of individual labels: 80

---

## UC-TM 6 CUS - Marker for terminal blocks

0824589

<https://www.phoenixcontact.com/us/products/0824589>



Marker for terminal blocks, can be ordered: by sheet, white, labeled according to customer specifications, mounting type: snap into tall marker groove, for terminal block width: 6.2 mm, lettering field size: 5.6 x 10.5 mm, Number of individual labels: 80



# UK 10-DREHSILA 250 (6,3X32) - Fuse modular terminal block

3005662

<https://www.phoenixcontact.com/us/products/3005662>

## UCT-TM 6 - Marker for terminal blocks

0828736

<https://www.phoenixcontact.com/us/products/0828736>



Marker for terminal blocks, Sheet, white, unlabeled, can be labeled with: TOPMARK NEO, TOPMARK LASER, BLUEMARK ID COLOR, BLUEMARK ID, BLUEMARK CLED, THERMOMARK PRIME, THERMOMARK CARD 2.0, THERMOMARK CARD, mounting type: snapped, for terminal block width: 6.2 mm, lettering field size: 5.6 x 10.5 mm, Number of individual labels: 60

## UCT-TM 6 CUS - Marker for terminal blocks

0829602

<https://www.phoenixcontact.com/us/products/0829602>



Marker for terminal blocks, can be ordered: by sheet, white, labeled according to customer specifications, mounting type: snap into tall marker groove, for terminal block width: 6.2 mm, lettering field size: 5.6 x 10.5 mm, Number of individual labels: 60

# UK 10-DREHSILA 250 (6,3X32) - Fuse modular terminal block

3005662

<https://www.phoenixcontact.com/us/products/3005662>

## CLIPFIX 35 - End clamp

3022218

<https://www.phoenixcontact.com/us/products/3022218>



Quick mounting end clamp for NS 35/7,5 DIN rail or NS 35/15 DIN rail, with marking option, width: 9.5 mm, color: gray

---

## CLIPFIX 35-5 - End clamp

3022276

<https://www.phoenixcontact.com/us/products/3022276>



Quick mounting end clamp for NS 35/7,5 DIN rail or NS 35/15 DIN rail, with marking option, with parking option for FBS...5, FBS...6, KSS 5, KSS 6, width: 5.15 mm, color: gray

# UK 10-DREHSILA 250 (6,3X32) - Fuse modular terminal block

3005662

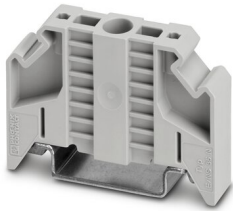
<https://www.phoenixcontact.com/us/products/3005662>

## E/NS 35 N - End clamp

0800886

<https://www.phoenixcontact.com/us/products/0800886>

End clamp, width: 9.5 mm, color: gray



---

## E/UK - End clamp

1201442

<https://www.phoenixcontact.com/us/products/1201442>

End clamp, material: PA, color: gray, Mounting on a DIN rail NS 32 or NS 35



# UK 10-DREHSILA 250 (6,3X32) - Fuse modular terminal block



3005662

<https://www.phoenixcontact.com/us/products/3005662>

## E/UK 1 - End clamp

1201413

<https://www.phoenixcontact.com/us/products/1201413>



End clamps, for supporting the ends of double-level and three-level terminal blocks, width: 10 mm, color: gray

---

## PSBJ 4/15/6 FARBLOS - Female test connector

0303419

<https://www.phoenixcontact.com/us/products/0303419>



Female test connector, number of positions: 1, fuse type: , mounting type: , , , color: transparent

# UK 10-DREHSILA 250 (6,3X32) - Fuse modular terminal block



3005662

<https://www.phoenixcontact.com/us/products/3005662>

## PSBJ 4/15/6 WH - Female test connector

0303312

<https://www.phoenixcontact.com/us/products/0303312>



Female test connector, number of positions: 1, fuse type: , mounting type: , , , color: white

---

## PSBJ 4/15/6 RD - Female test connector

0303325

<https://www.phoenixcontact.com/us/products/0303325>



Female test connector, number of positions: 1, fuse type: , mounting type: , , , color: red

# UK 10-DREHSILA 250 (6,3X32) - Fuse modular terminal block

3005662

<https://www.phoenixcontact.com/us/products/3005662>

## PSBJ 4/15/6 BU - Female test connector

0303354

<https://www.phoenixcontact.com/us/products/0303354>



Female test connector, number of positions: 1, fuse type: , mounting type: , , , color: blue

---

## PSBJ 4/15/6 YE - Female test connector

0303367

<https://www.phoenixcontact.com/us/products/0303367>



Female test connector, number of positions: 1, fuse type: , mounting type: , , , color: yellow

# UK 10-DREHSILA 250 (6,3X32) - Fuse modular terminal block



3005662

<https://www.phoenixcontact.com/us/products/3005662>

PSBJ 4/15/6 GN - Female test connector

0303370

<https://www.phoenixcontact.com/us/products/0303370>



Female test connector, number of positions: 1, fuse type: , mounting type: , , , color: green

---

PSBJ 4/15/6 VT - Female test connector

0303383

<https://www.phoenixcontact.com/us/products/0303383>



Female test connector, number of positions: 1, fuse type: , mounting type: , , , color: violet

# UK 10-DREHSILA 250 (6,3X32) - Fuse modular terminal block



3005662

<https://www.phoenixcontact.com/us/products/3005662>

## PSBJ 4/15/6 GY - Female test connector

0303396

<https://www.phoenixcontact.com/us/products/0303396>



Female test connector, number of positions: 1, fuse type: , mounting type: , , , color: gray

---

## PSBJ 4/15/6 BK - Female test connector

0303406

<https://www.phoenixcontact.com/us/products/0303406>



Female test connector, number of positions: 1, fuse type: , mounting type: , , , color: black



# UK 10-DREHSILA 250 (6,3X32) - Fuse modular terminal block



3005662

<https://www.phoenixcontact.com/us/products/3005662>

## PSB 4/7/6 - Female test connector

0303299

<https://www.phoenixcontact.com/us/products/0303299>



Female test connector, number of positions: 1, fuse type: , mounting type: , , ,  
color: silver

---

Phoenix Contact 2023 © - all rights reserved

<https://www.phoenixcontact.com>

Phoenix Contact USA  
586 Fulling Mill Road  
Middletown, PA 17057, United States  
(+717) 944-1300  
[info@phoenixcon.com](mailto:info@phoenixcon.com)