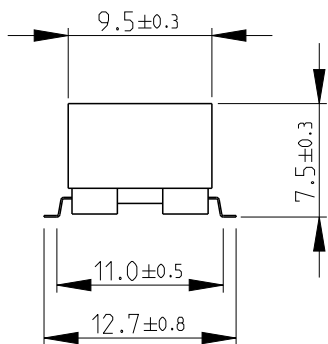
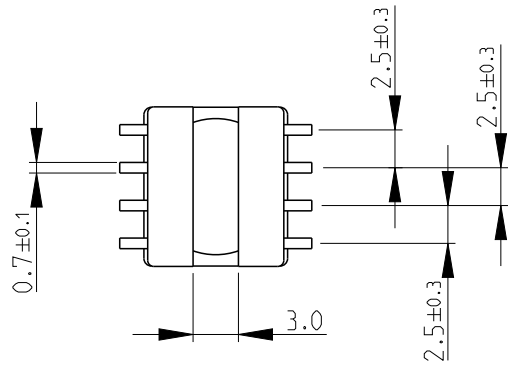
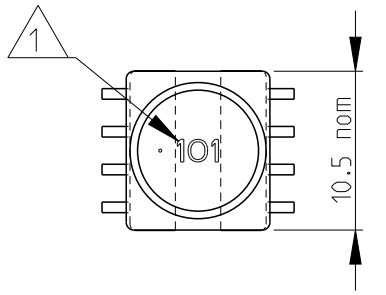
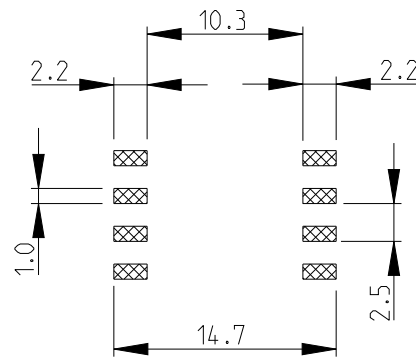


LOC	DIST	REVISIONS					
E	B	P	LTR	DESCRIPTION	DATE	DWN	APVD
		BA2	ECR-13-015529		04OCT2013	KR	TN

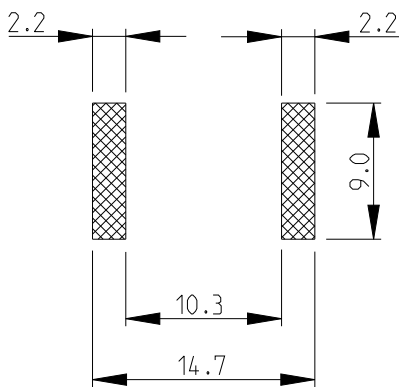


RECOMMENDED LAND PATTERN FOR INDUCTANCE VALUES 100 μH OR HIGHER



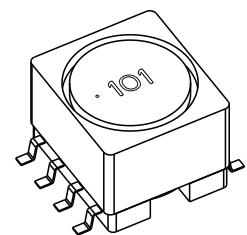
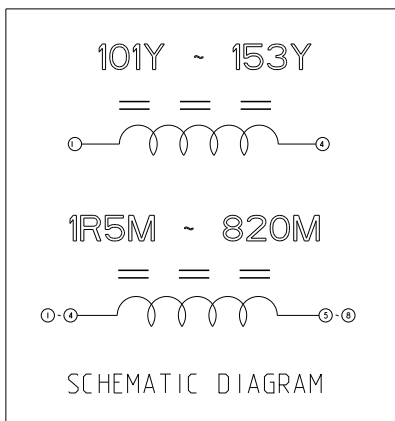
RoHS Compliant

RECOMMENDED LAND PATTERN FOR INDUCTANCE VALUES 1.5 μH - 82 μH



1 INDUCTANCE CODE

2 FOR FURTHER INFORMATION SEE DATA SHEET FOR 3632 SERIES-SHIELDED SMD POWER INDUCTORS



2008

RELEASED FOR PUBLICATION

ALL RIGHTS RESERVED.

THIS DRAWING IS UNPUBLISHED.

BY -
© COPYRIGHT 2008

DIMENSIONS: mm	DWN	SUBHASH.M	03-Sep-08	MATERIAL	-	FINISH	-						
	CHK	PRAKASH.S	03-Sep-08										
TOLERANCES UNLESS OTHERWISE SPECIFIED:	APVD	STEPHEN.P	03-Sep-08					NAME	SHIELDED SMD POWER INDUCTOR SERIES 3632B				
	0 PLC ± 0.2	PRODUCT SPEC	-	SIZE	A 4	CAGE CODE	00779	DRAWING NO	© = 1625813	RESTRICTED TO	-		
1 PLC ± 0.1	APPLICATION SPEC	-	WEIGHT	-	Customer Drawing			SCALE	2:1	SHEET	1 OF 1	REV	BA2
2 PLC ±													
3 PLC ±													
4 PLC ±													
ANGLES ± 5°													

Mouser Electronics

Authorized Distributor

Click to View Pricing, Inventory, Delivery & Lifecycle Information:

[TE Connectivity:](#)

[3632B103LT](#)