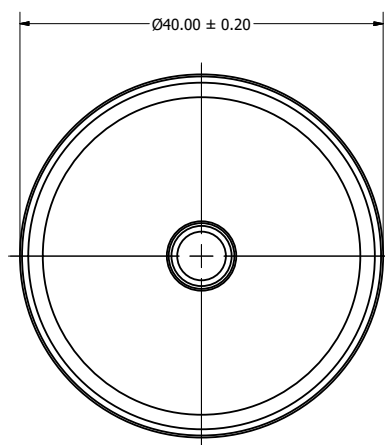
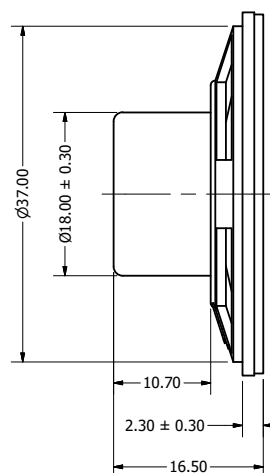


Part Number:	SP400816-1	DRAWN CJ	8/4/2016
		CHECKED P.D.	8/4/2016
	Description: Dynamic Speaker	APPROVED J.S.	8/4/2016
This document contains data proprietary to DB Unlimited. Any use or reproduction, in any form, without prior written permission of DB Unlimited is prohibited. All terms and conditions can be found at www.dbunlimitedco.com			

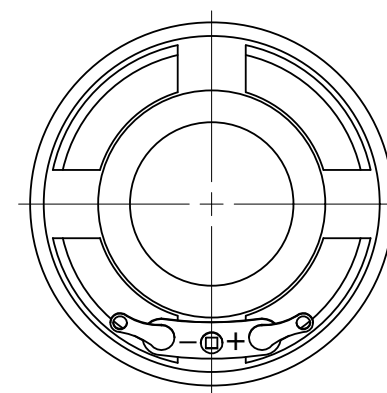
Top View



Side View



Bottom View



Items		Specifications	Conditions	REVISION HISTORY		
Sound Pressure Level		98 ± 3	dB (@ 10cm)	REV	DESCRIPTION	DATE
Resonant Frequency		850	Hz		Released from Engineering	10/21/2013
Frequency Range		850 ~ 7,000	Hz	1	Updated to new template	8/4/2016
Nominal Power		0.25	W	2	Corrected SPL	5/22/2017
Max. Power		0.5	W	3	Added Polarity	12/28/2017
Impedance		16	Ω			
Cone Material		Paper			NOTES	
Mount Type		Flush Mount			1) All dimensions are in mm unless otherwise noted	
Storage Temperature		-25 ~ +55	°C		2) All tolerances are ± 0.5 mm unless otherwise noted	
Operating Temperature		-25 ~ +55	°C		3) All parts meet RoHS	
Weight		10	g		4) Subject to change or redrawn without notice	