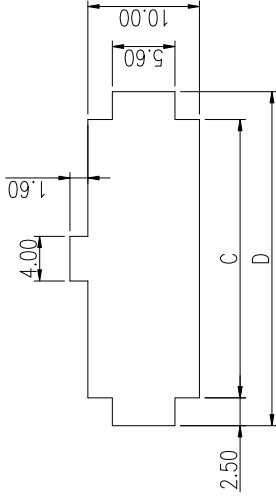
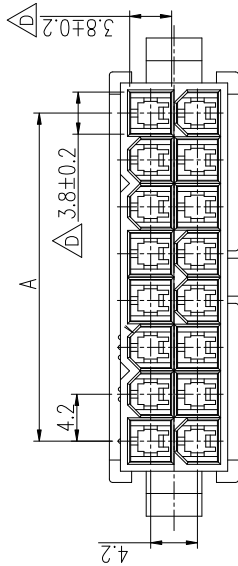
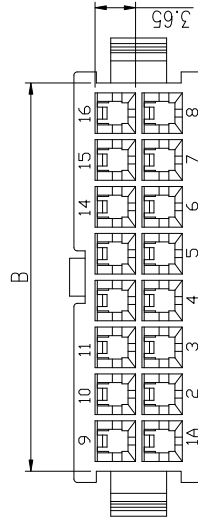
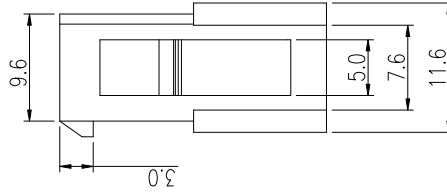
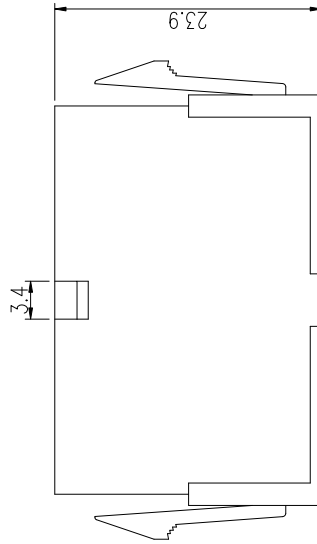


PRODUCT NUMBER

SEE PART NO. TABLE



PANEL HOLE DIMENSIONS  
RECOMMENDED THICKNESS: 2.54 MAX.  
TOLERANCE: ±0.1



NOTES:

1. MATERIAL: NYLON 66, UL 94V-0. GLOW WIRE COMPATIBLE. COLOR: NATURAL.
2. THIS HSG IS USED WITH FCI PLUG TERMINAL 10127818.
3. THIS PLUG MATES WITH FCI RECEPTACLE WIRE CONNECTOR 10127815.
4. PRODUCT SPECIFICATION: GS-12-1181.
5. PACKAGE SPECIFICATION: GS-14-2362.
6. PART NUMBER SCHEME:  
10127816-XX LF

POS. CODE:  
02: 2 POS.  
04: 4 POS.  
24: 24 POS.

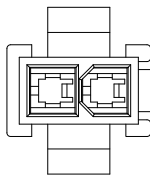
7. DIMENSIONAL & PART NO. TABLE:

| PART NUMBER   | POS. | A    | B    | C    | D    |
|---------------|------|------|------|------|------|
| 10127816-02LF | 2    | 5.4  | 5.8  | 10.8 |      |
| 10127816-04LF | 4    | 4.2  | 9.6  | 10.0 | 15.0 |
| 10127816-06LF | 6    | 8.4  | 13.8 | 14.2 | 19.2 |
| 10127816-08LF | 8    | 12.6 | 18.0 | 18.4 | 23.4 |
| 10127816-10LF | 10   | 16.8 | 22.2 | 22.6 | 27.6 |
| 10127816-12LF | 12   | 21.0 | 26.4 | 26.8 | 31.8 |
| 10127816-14LF | 14   | 25.2 | 30.6 | 31.0 | 36.0 |
| 10127816-16LF | 16   | 29.4 | 34.8 | 35.2 | 40.2 |
| 10127816-18LF | 18   | 33.6 | 39.0 | 39.4 | 44.4 |
| 10127816-20LF | 20   | 37.8 | 43.2 | 43.6 | 48.6 |
| 10127816-22LF | 22   | 42.0 | 47.4 | 47.8 | 52.8 |
| 10127816-24LF | 24   | 46.2 | 51.6 | 52.0 | 57.0 |

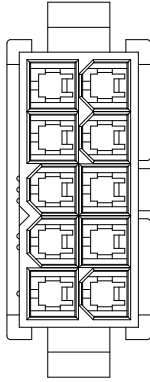
| mat'l. code |             | surface    | tolerance  | projection                            | product family                                      |
|-------------|-------------|------------|------------|---------------------------------------|---|
| ltr         | ecn no      | dr         | date       | tolerances unless otherwise specified | MINITEK PWR4.2                                      |
| A           | TAI         | 2013-11-11 |            | B<br>X.X ±0.4                         | PLUG HSG, DUAL ROW<br>MINITEK PWR4.2 WIRE CONNECTOR |
| B           | ELX-T-1793  | TAI        | 2014-03-12 | angles<br>X.XX ±0.3                   |   |
| C           | ELX-T-19251 | TAI        | 2014-10-31 | C<br>X°±1°                            |   |
| D           | ELX-T-20468 | TAI        | 2015-03-16 | dr                                    |   |
|             |             |            |            | engr                                  | KENNY TAI 2013-11-11                                |
|             |             |            |            | chr                                   | KENNY TAI 2013-11-11                                |
|             |             |            |            | appd                                  | PM ZHENG 2013-11-22                                 |
| sheet index | revision    | D          | D          |                                       |   |
|             | sheet       | 1          | 2          |                                       |   |



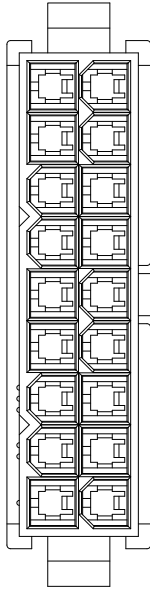
dwg no 10127816 sheet 1 of 2 size A4  
type CUSTOMER Drawing



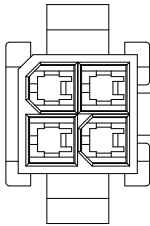
2 POS



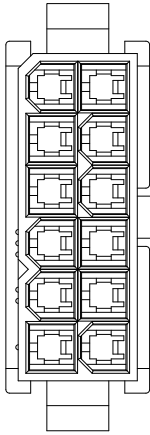
10 POS



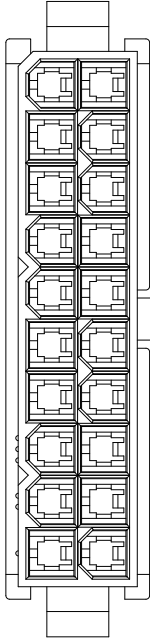
18 POS



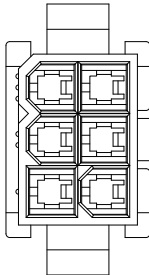
4 POS



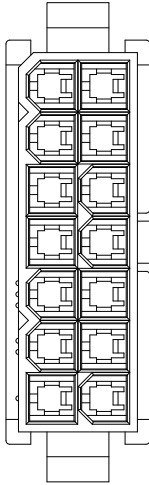
12 POS



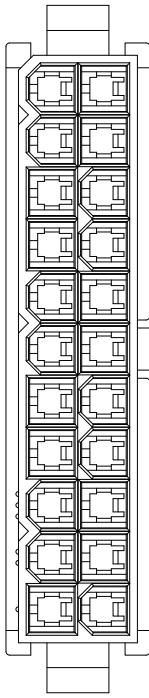
20 POS



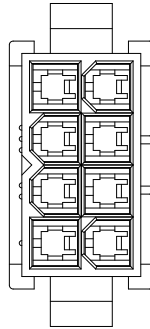
6 POS



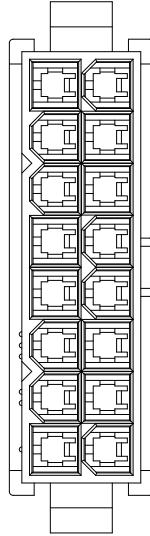
14 POS



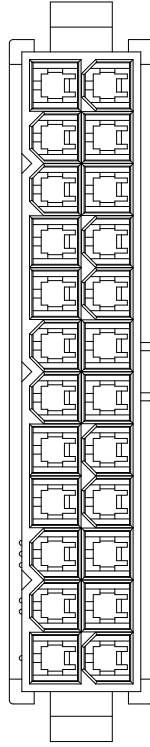
22 POS



8 POS



16 POS



24 POS

| mat'l. code |           | surface   | tolerance                             | projection | product family                |
|-------------|-----------|-----------|---------------------------------------|------------|-------------------------------|
| ltr         | ecn no/dr | date      | tolerances unless otherwise specified |            | MINITEK PWR4.2                |
|             |           |           | B<br>X.X ±0.4                         | MM         | title                         |
|             |           |           | C<br>X.XX ±0.3                        | MM         | PLUG HSG, DUAL ROW            |
|             |           |           | D<br>X±1"                             | scale      | MINITEK PWR4.2 WIRE CONNECTOR |
|             | dr        | KENNY TAI | 2013-11-11                            |            | dwg no                        |
|             | enfr      | KENNY TAI | 2013-11-11                            |            | sheet 2 of 2 size             |
|             | chr       | KENNY TAI | 2013-11-11                            |            | 10127816                      |
|             | appd      | PM ZHENG  | 2013-11-22                            | type       | CUSTOMER Drawing              |
| sheet index | revision  | D         |                                       |            |                               |
|             | sheet     | 1         | 2                                     |            |                               |

A

B

B