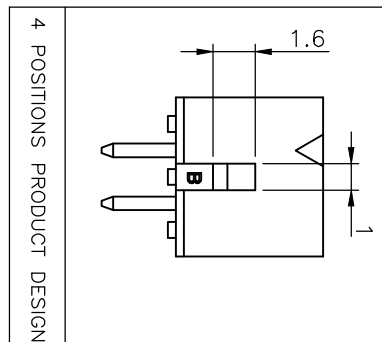
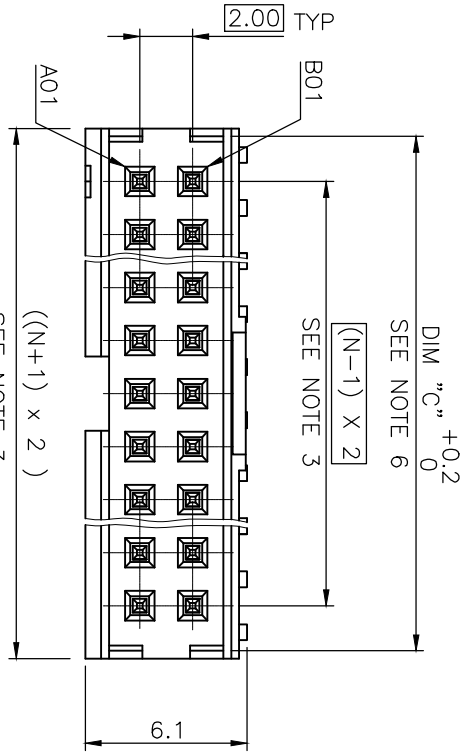


PRODUCT NUMBER
98416-XXX-XX-XXXXF

RoHS COMPATIBLE, SEE NOTE 8

- PLATING _____
 S = 0.38µm GOLD/GXT ON CONTACT AREA
 3.81µm TIN LEAD ON TAIL
 G = 0.76µm GOLD/GXT ON CONTACT AREA
 3.81µm TIN LEAD ON TAIL
 F = GOLD FASH ON CONTACT AREA
 3.81µm TIN LEAD ON TAIL
- POLARIZATION, SEE NOTE 7
 PACKAGING, SEE NOTE 5
 TOTAL NB OF POS, 04 UP TO 50 ONLY
 16 POS TOOLED.
 COLOR OPTION NOTE 1

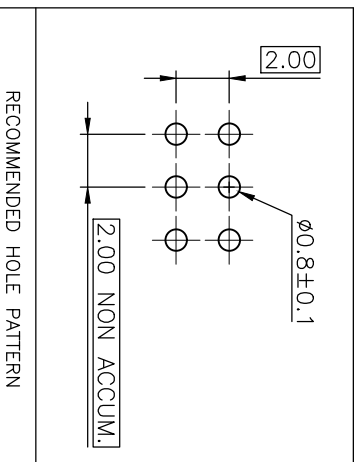
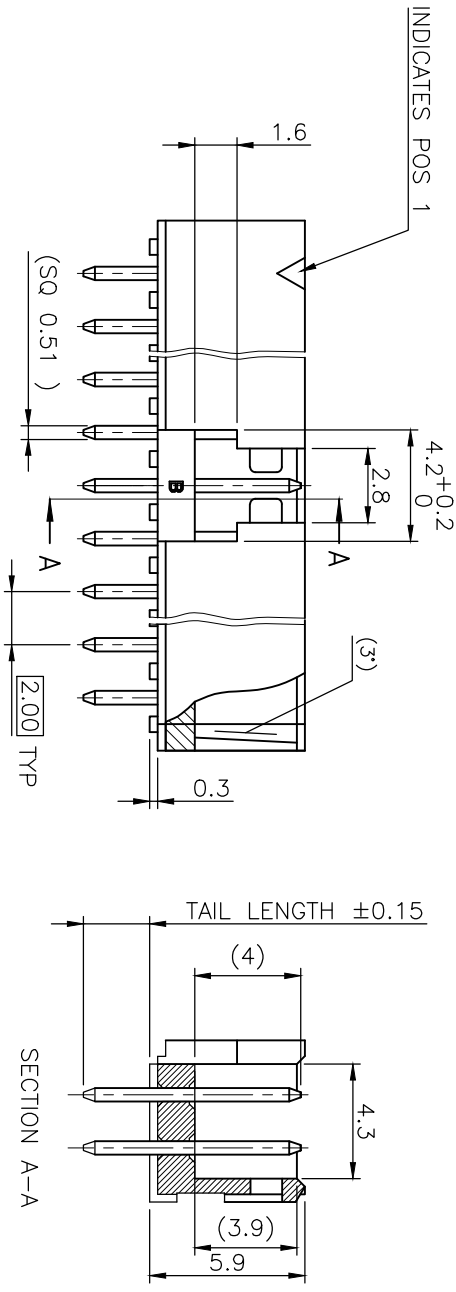
| PIN STYLE | TAIL LENGTH |
|-----------|-------------|
| 04 | 2.00 |
| 06 | 2.50 |
| 08 | 3.10 |
| 10 | 3.70 |



SEE NOTE 3

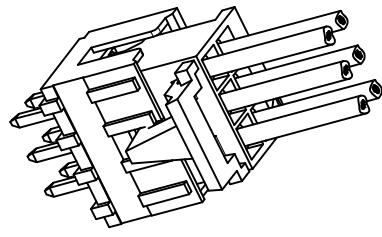
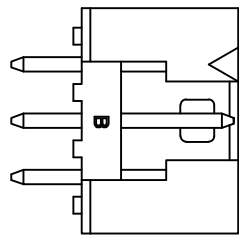
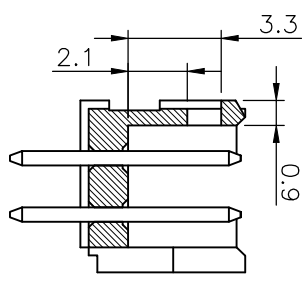
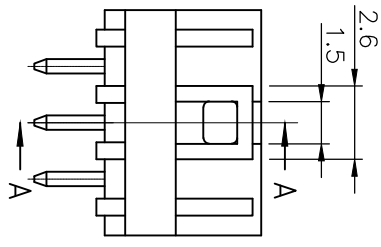
- NOTES:
- MATERIAL HOUSING: HIGH TEMP. THERMOPLASTIC UL-94V0
 - = STANDARD COLOR CREAM
 B = OPTIONAL COLOR BLACK
 - MATERIAL TERMINAL: COPPER ALLOY
 - TO DETERMINE DIMENSIONS:
 N = NUMBER OF POSITIONS PER ROW
 - 7N MIN. PIN RETENTION IN EITHER DIRECTION.
 - PACKAGING:
 = PLASTIC BOX
 - = PLASTIC BOX WHEN POLARISATION FEATURE APPLICABLE
 U = TUBE AVAILABLE FROM 06 TO 50 POS

- FOR POLARIZATION, SPECIFIED PIN EXAMPLE : A03 = ROW A, POSITION 03 TO OMIT PIN OMIT FROM PRODUCT NUMBER IF THIS FEATURE IS NOT APPLICABLE.
- RoHS COMPATIBLE PRODUCT SPECIFICATIONS
 a - PLATING:
 - "LF" MEANS THE PRODUCT IS LEAD-FREE,
 2µm MINIMUM MATTE TIN OVER 1.27µm MINIMUM NICKEL UNDERPLATE.
 b - MANUFACTURING PROCESS COMPATIBILITY
 - THE HOUSING WILL WITHSTAND EXPOSURE TO 260°C ±5°C SOLDER BATH TEMPERATURE FOR 5 SECONDS IN A WAVE SOLDER APPLICATION WITH A 1.6mm MIN THICK CIRCUIT BOARD.
 c - LABELLING:
 - MEETS PACKAGING SPECS AS PER GS-14-920
 d - THIS PRODUCT MEETS EUROPEAN DIRECTIVES AND OTHER COUNTRY REGULATIONS AS DISCRIBED IN GS-47-0004.

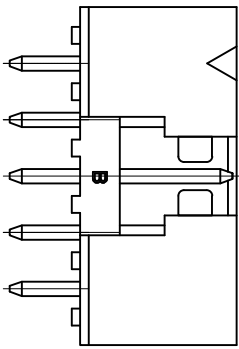
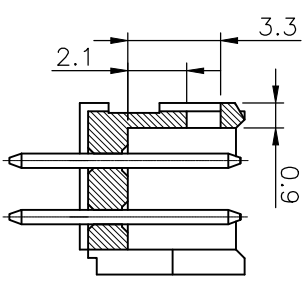
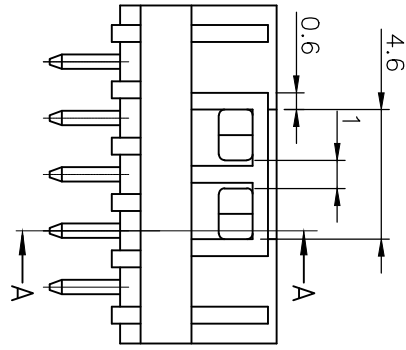


| mat'l. code | | | | SEE NOTES | | surface | | tolerance | | projection | product family |
|-------------|--------------|-----|----------|-----------|---------------------------------------|---------|----------|-----------|----|-----------------------|----------------|
| ltr | ecn no | dr | date | ISO 1302 | tolerances unless otherwise specified | ISO 406 | ISO 1101 | 101 | mm | title | MINITEK |
| A | AMA | | 14.12.11 | | XXX ±0.3 | | | | mm | SHR HEADER | |
| B | B-20254 | LWU | 15.02.16 | | XXX ±0.13 | | | | mm | 2.0MM, HIGH END WALLS | |
| dr | L.MULIN | | 11.05.19 | | XXX ±0.05 | | | | mm | 98416 | sheet 1 of 2 |
| engr | J.COMPAIGNON | | 11.05.19 | | | | | | mm | CUSTOMER Drawing | A3 |
| chr | JCO | | 11.05.20 | | | | | | mm | | |
| qppd | JCO | | 11.12.02 | | | | | | mm | | |
| sheet index | revision | B | 1 | B | 2 | | | | | | |

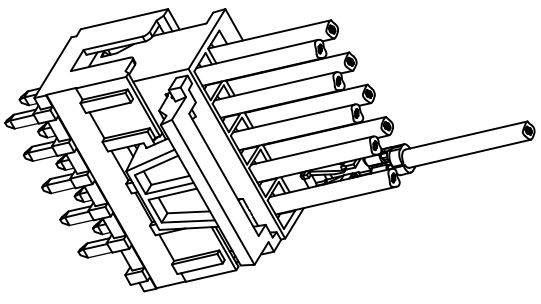
1 2 3 4 5 6



2x3 POS AND 2x4 POS CONFIGURATION
NO LATCHING AVAILABLE FOR 2x2 POS



2x5 POS UP TO 2x25 POS CONFIGURATION



LATCHING FEATURES WHEN USED IN COMBINATION
WITH ACTIVE LATCH HOUSING 10073599

| | | | | | | | | | |
|-------------|----------|----------|------------|---------------------------------------|--|------------|--|-----------------------|--|
| mat'l. code | | surface | | tolerance | | projection | | product family | |
| SEE NOTES | | ISO 1302 | | ISO 406 ISO | | 10/1 | | MINITEK | |
| lfr | ecm no | lfr | date | tolerances unless otherwise specified | | mm | | title | |
| A | | AMA | 14.12.11 | X.X ±0.3 | | mm | | SHR HEADER | |
| B | B-20254 | LMU | 15.02.16 | linear XXX ±0.13 | | mm | | 2.0MM, HIGH END WALLS | |
| | | | | K:XXX ±0.05 | | mm | | sheet 2 of - size | |
| | | lfr | LMULIN | 11.05.19 | | mm | | 98416 | |
| | | engr | J.COMRAGON | 11.05.19 | | mm | | CUSTOMER Drawing | |
| | | chr | JCO | 11.05.20 | | mm | | A3 | |
| | | appd | JCO | 11.12.02 | | mm | | | |
| Sheet | revision | | | | | | | | |
| Index | Sheet | | | | | | | | |