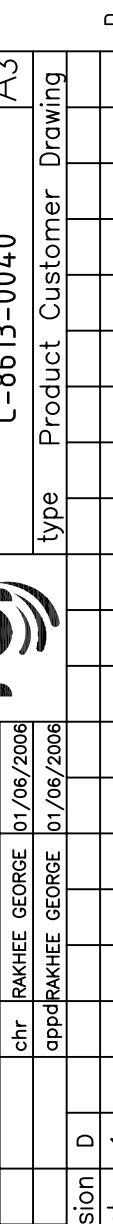
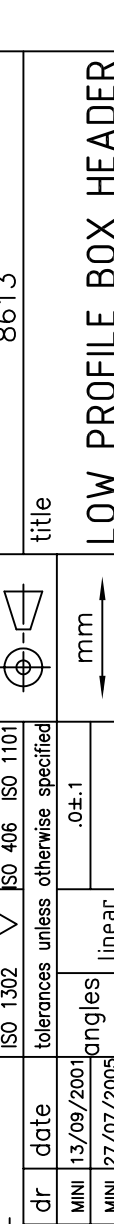
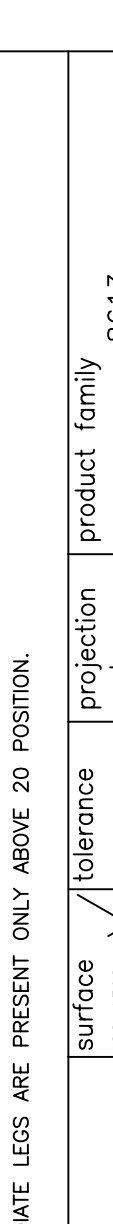
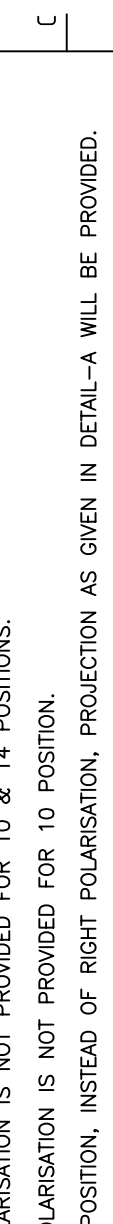
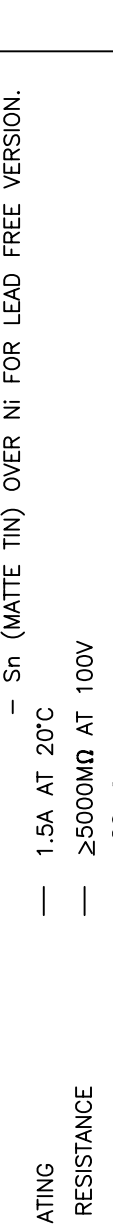
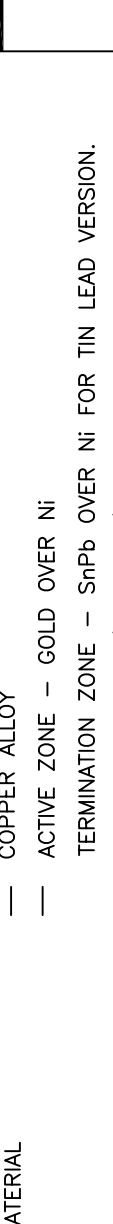
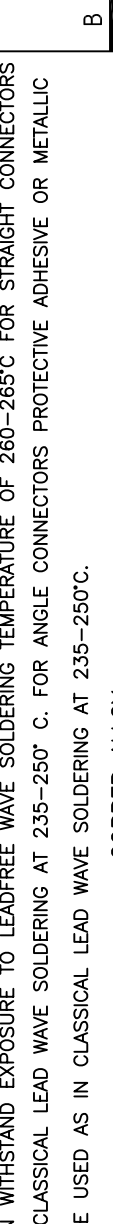
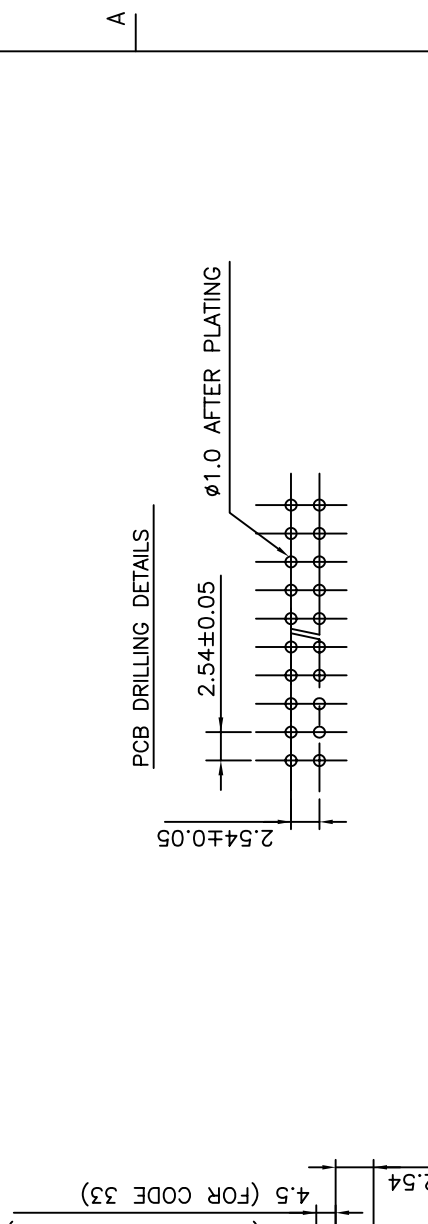


D	17.91	22.99	25.53	30.61	38.23	43.31	48.39	56.01	68.71	81.41	86.49
C	-	-	-	-	17.78	17.78	17.78	25.40	17.78	25.40	25.40
B	10.16	15.24	17.78	22.86	30.48	35.56	40.64	48.26	60.96	73.66	78.74
+0.25 A-0	19.71	24.79	27.33	32.41	40.03	45.11	50.19	57.81	70.51	83.21	88.29
NO.OF POSITION	10	14	16	20	26	30	34	40	50	60	64



ANGLED SPILL [13,23&33]

STRAIGHT SPILL [14&24]

13 X = 4.20±0.35
23 X = 2.80±0.2
33 X = 6.0±0.2

14 X = 4.35±0.35
24 X = 2.90±0.2

NOTE-1
NOTE-2
NOTE-3

SEE DETAIL-A

TECHNICAL SPECIFICATION

HOUSING MATERIAL — THERMOPLASTIC POLYESTER UL 94 V0; GREY
HOUSING CAN WITHSTAND EXPOSURE TO LEADFREE WAVE SOLDERING TEMPERATURE OF 260-265°C FOR STRAIGHT CONNECTORS AS IT IS IN CLASSICAL LEAD WAVE SOLDERING AT 235-250° C. FOR ANGLE CONNECTORS PROTECTIVE ADHESIVE OR METALLIC DEVICE TO BE USED AS IN CLASSICAL LEAD WAVE SOLDERING AT 235-250°C.

CONTACT MATERIAL — COPPER ALLOY
PLATING — ACTIVE ZONE — GOLD OVER Ni
TERMINATION ZONE — SnPb OVER Ni FOR TIN LEAD VERSION.
— Sn (MATTE TIN) OVER Ni FOR LEAD FREE VERSION.

CURRENT RATING — 1.5A AT 20°C
INSULATION RESISTANCE — ≥5000MΩ AT 100V
CONTACT RESISTANCE — ≤20mΩ
DIELECTRIC WITHSTANDING VOLTAGE — 1000 Vrms
OPERATING TEMPERATURE — -55°C TO +125°C
REFERENCE SPECIFICATION — IEC 603-13 / DIN 41651

NOTES
1. LEFT POLARISATION IS NOT PROVIDED FOR 10 & 14 POSITIONS.
2. RIGHT POLARISATION IS NOT PROVIDED FOR 10 POSITION.
3. INTERMEDIATE LEGS ARE PRESENT ONLY ABOVE 20 POSITION.

FOR 10 POSITION, INSTEAD OF RIGHT POLARISATION, PROJECTION AS GIVEN IN DETAIL-A WILL BE PROVIDED.
FOR 10 POSITION, INSTEAD OF RIGHT POLARISATION, PROJECTION AS GIVEN IN DETAIL-A WILL BE PROVIDED.
FOR 10 POSITION, INSTEAD OF RIGHT POLARISATION, PROJECTION AS GIVEN IN DETAIL-A WILL BE PROVIDED.

FOR 10 POSITION, INSTEAD OF RIGHT POLARISATION, PROJECTION AS GIVEN IN DETAIL-A WILL BE PROVIDED.
FOR 10 POSITION, INSTEAD OF RIGHT POLARISATION, PROJECTION AS GIVEN IN DETAIL-A WILL BE PROVIDED.
FOR 10 POSITION, INSTEAD OF RIGHT POLARISATION, PROJECTION AS GIVEN IN DETAIL-A WILL BE PROVIDED.

FOR 10 POSITION, INSTEAD OF RIGHT POLARISATION, PROJECTION AS GIVEN IN DETAIL-A WILL BE PROVIDED.
FOR 10 POSITION, INSTEAD OF RIGHT POLARISATION, PROJECTION AS GIVEN IN DETAIL-A WILL BE PROVIDED.
FOR 10 POSITION, INSTEAD OF RIGHT POLARISATION, PROJECTION AS GIVEN IN DETAIL-A WILL BE PROVIDED.

FOR 10 POSITION, INSTEAD OF RIGHT POLARISATION, PROJECTION AS GIVEN IN DETAIL-A WILL BE PROVIDED.
FOR 10 POSITION, INSTEAD OF RIGHT POLARISATION, PROJECTION AS GIVEN IN DETAIL-A WILL BE PROVIDED.
FOR 10 POSITION, INSTEAD OF RIGHT POLARISATION, PROJECTION AS GIVEN IN DETAIL-A WILL BE PROVIDED.

FOR 10 POSITION, INSTEAD OF RIGHT POLARISATION, PROJECTION AS GIVEN IN DETAIL-A WILL BE PROVIDED.
FOR 10 POSITION, INSTEAD OF RIGHT POLARISATION, PROJECTION AS GIVEN IN DETAIL-A WILL BE PROVIDED.
FOR 10 POSITION, INSTEAD OF RIGHT POLARISATION, PROJECTION AS GIVEN IN DETAIL-A WILL BE PROVIDED.

FOR 10 POSITION, INSTEAD OF RIGHT POLARISATION, PROJECTION AS GIVEN IN DETAIL-A WILL BE PROVIDED.
FOR 10 POSITION, INSTEAD OF RIGHT POLARISATION, PROJECTION AS GIVEN IN DETAIL-A WILL BE PROVIDED.
FOR 10 POSITION, INSTEAD OF RIGHT POLARISATION, PROJECTION AS GIVEN IN DETAIL-A WILL BE PROVIDED.

FOR 10 POSITION, INSTEAD OF RIGHT POLARISATION, PROJECTION AS GIVEN IN DETAIL-A WILL BE PROVIDED.
FOR 10 POSITION, INSTEAD OF RIGHT POLARISATION, PROJECTION AS GIVEN IN DETAIL-A WILL BE PROVIDED.
FOR 10 POSITION, INSTEAD OF RIGHT POLARISATION, PROJECTION AS GIVEN IN DETAIL-A WILL BE PROVIDED.

surface	ISO 1302	tolerance	ISO 406 ISO 1101	projection	product family	8613
tolerances unless otherwise specified		angles	linear	mm	title	LOW PROFILE BOX HEADER
ecn no	dr	date	MINI 13/09/2001	MINI 27/07/2005	MINI 01/06/2006	07±1
A	105-0123	MINI 27/07/2005	MINI.K.VANDANATH	13/09/2001	engr	RAKHEE GEORGE
B	106-0066	MINI 01/06/2006	chr	RAKHEE GEORGE	01/06/2006	appd
C	109-0242	GT	28/10/2009	dr	MINI.K.VANDANATH	13/09/2001
D					enr	RAKHEE GEORGE
					chr	RAKHEE GEORGE
					appd	RAKHEE GEORGE
sheet index	revision	sheet	D	1	dwg no	sheet 1 of 1
					C-8613-0040	A3
					type	Product Customer Drawing

ORDERING INFORMATION

8613

SERIES

NO.OF CONTACTS :-
10,14,16,20,26,30,34
40,50,60,64

LOW PROFILE BOX HEADER

TYPE OF TERMINATION

13 - LONG ANGLED SPILL
14 - LONG STRAIGHT SPILL
23 - SHORT ANGLED SPILL
24 - SHORT STRAIGHT SPILL
33 - SPL. LONG ANGLED SPILL

SPECIAL CODES
000E1: TIN LEAD VERSION
E1LF: LEAD FREE VERSION

LONGITUDINAL PITCH
5 - 2.54 mm
8 - 5.08 mm

PERFORMANCE CLASS
4 - DIN 41651 CLASS 3
5 - DIN 41651 CLASS 2
6 - DIN 41651 CLASS 1
8 - AS PER JSS 50810

INSULATOR MATERIAL
3 - PBT GREY

1. THE "LF" PRODUCTS MEET EUROPEAN UNION DIRECTIVES AND OTHER COUNTRY REGULATIONS AS DESCRIBED IN GS-22-008
2. THE HOUSING WILL WITHSTAND EXPOSURE TO 260°C PEAK TEMPERATURE FOR 3.5 SECONDS IN A WAVE SOLDER APPLICATION WITH A 1.6 MM MINIMUM THICK CIRCUIT BOARD
3. LEAD FREE OR ROHS DIRECTIVE LABELING TO BE PROVIDED AS PER GS-14-920 FOR ROHS COMPATIBLE VERSION.

FCI
Copyright FCI

STATUS: **Released** Printed: Sep 24, 2010

PDM: **Rev:D**

form: A3