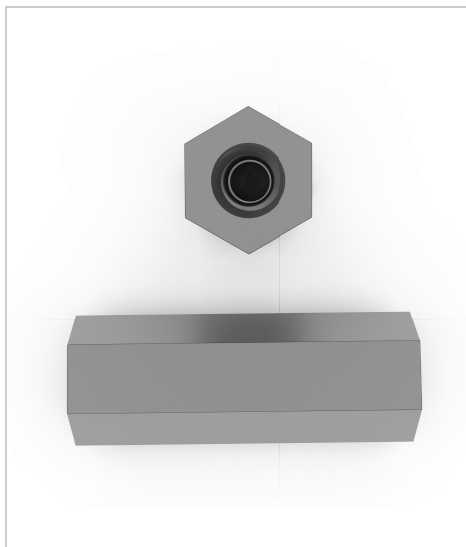




Home > 2100-632-B



Female Standoffs

Model: 2100-632-B

Select Finish

-0 No Plate

Request Quote

[Request Custom Part](#)

RFQ

Choose a CAD format

Download CAD

View 3D Model

View 2D Drawing

Product Details

These standoffs are made of Brass. They are Hexagon shaped with diameter as 1/4". The thread for this part is 6-32 and length is 1/4".

PDF Catalog

[RAF_catalog_0082.pdf](#)

Thread	6-32
O.D.	1/4"
Shape	Hexagon
Length (L)	1/4"
Material	Brass
RoHS	Yes



RAF ELECTRONIC
HARDWARE

TECHNICAL INFORMATION

Electronic Hardware Components

Engineering Data

COMPANY

RAF Quality Management

Industry Links