



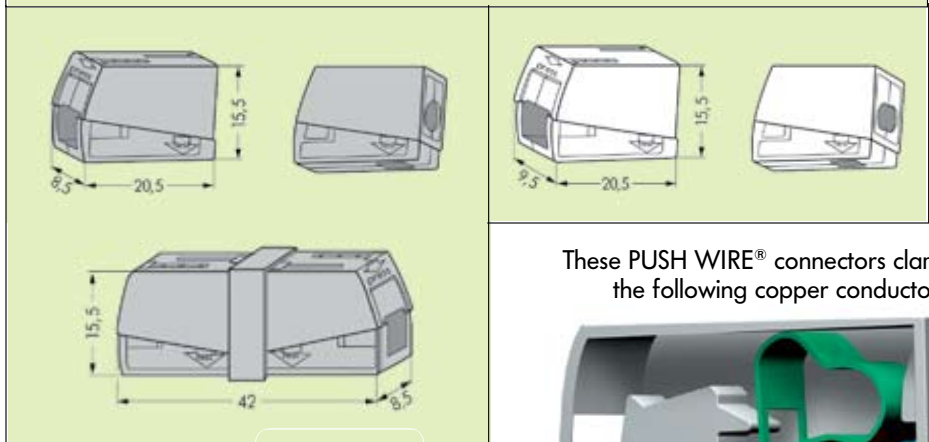
FZOLINK INDUSTRIAL COMPANY LIMITED

OL-224 Series Lighting & "Service" connectors

Power input side 1.0 – 2.5 mm ² -“s” Fixture side 0.5 – 2.5 mm ² -“s+f-st” 400 V/4 kV/2**; 24 A 9 – 11 mm / 0.39 in	AWG 14 – 12 AWG 20 – 16 300 V	Power input side 2-x-1.0 – 2.5 mm ² -“s” Fixture side 0.5 – 2.5 mm ² -“s+f-st” 400 V/4 kV/2**; 24 A 9 – 11 mm / 0.39 in	AWG 16 – 14 AWG 20 – 16 300 V
--	---	--	---

Item No. OL-224-101	OL-224-201	Item No. OL-224-112	OL-224-112

Dimensions (in mm)



These PUSH WIRE® connectors clamp the following copper conductors:

Fixture Side

CAGE CLAMP



stranded

fine stranded

solid



fine stranded with crimped pin terminal

fine stranded, tip bonded

fine stranded with crimped ferrule

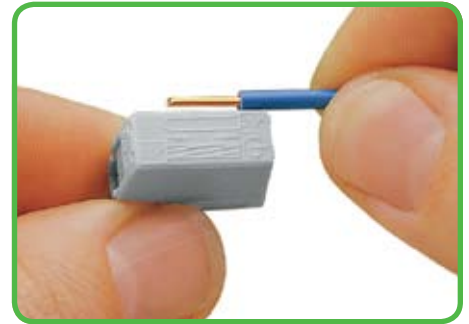
Power Input Side

PUSH WIRE



solid

Stripped length



Strip conductor to 9 – 11 mm / 0.39 in



Connection of conductors (installation side):
Introduce stripped solid conductor into circular entry and push to stop.



Removal:

Hold wire to be removed and twist alternating left and right while pulling the conductor



Testing through separate test slot

Testing



Testing through separate test slot



Connection of conductors (lighting side):
Press button fully and insert stripped conductor into square entry and release.



To remove: Press button and withdraw conductor