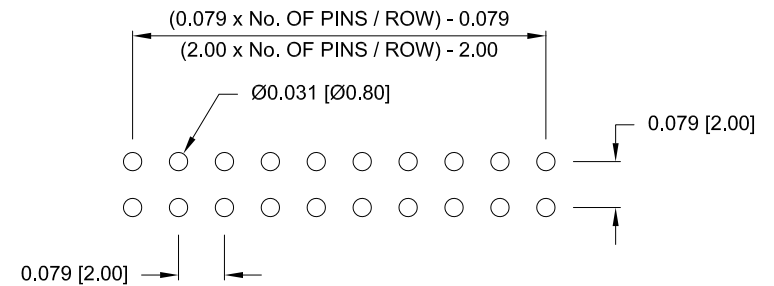
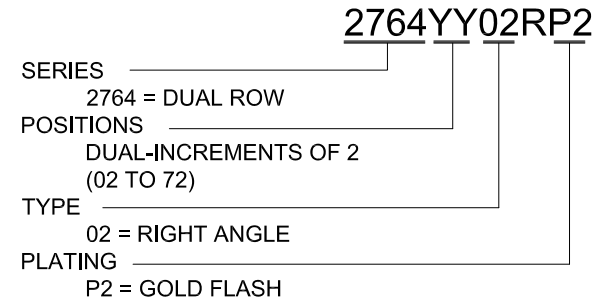
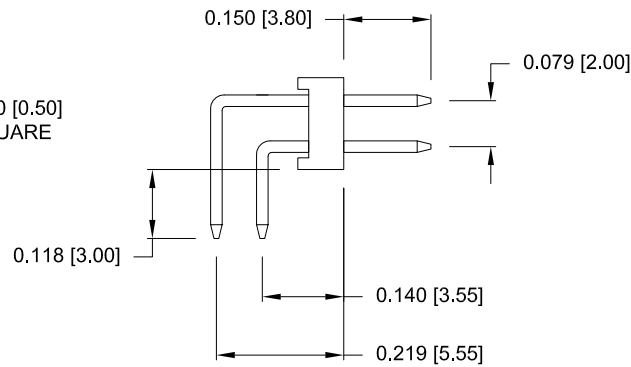
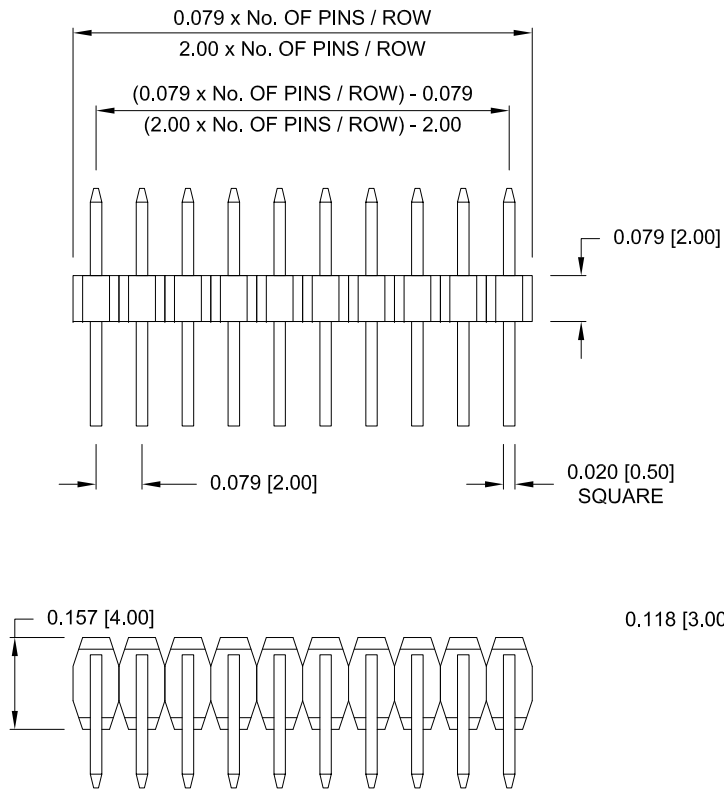


ELECTRICAL CHARACTERISTICS

VOLTAGE: 250 VAC (RMS) Max.  
 CURRENT RATING: 1 AMP  
 CONTACT RESISTANCE: 20 mΩ Max.  
 INSULATION RESISTANCE: 5000 MΩ Min.  
 DIELECTRIC WITHSTANDING: 500 VAC  
 OPERATING TEMPERATURE: -40°C TO +105°C  
 PROCESSING TEMPERATURE: 260°C FOR 10 SECONDS

MATERIAL CHARACTERISTICS

HOUSING: PA9T, UL94V-0, BLACK  
 CONTACTS: COPPER ALLOY  
 PLATING: GOLD FLASH ENTIRE CONTACT



RECOMMENDED P.C. BOARD LAYOUT  
 (ALL TOLERANCES = ±0.002)

RoHS COMPLIANT

UNITS = inch [mm]

DO NOT SCALE FROM DRAWING



THESE DRAWINGS AND SPECIFICATIONS ARE THE PROPERTY OF NorComp AND SHALL NOT BE REPRODUCED, COPIED OR USED AS THE BASIS FOR THE MANUFACTURE OR SALE OF APPARATUS WITHOUT WRITTEN PERMISSION.

DRAWN: C. SMITH  
 DATE: 07/16/2008

NorComp

SCALE: NTS	SHEET 1 OF 1	REV 4
DWG NO. 2764YY02RP2		

# Mouser Electronics

Authorized Distributor

Click to View Pricing, Inventory, Delivery & Lifecycle Information:

## NorComp:

[27640402RP2](#) [27640602RP2](#) [27640802RP2](#) [27641002RP2](#) [27641202RP2](#) [27641402RP2](#) [27641602RP2](#)  
[27641802RP2](#) [27642002RP2](#) [27642202RP2](#) [27642402RP2](#) [27642802RP2](#) [27643002RP2](#) [27643202RP2](#)  
[27644002RP2](#) [27644402RP2](#) [27646002RP2](#) [27646202RP2](#) [27647002RP2](#) [27647202RP2](#) [27645002RP2](#)