

Euromas ABS / PC / F05

Enclosure, polycarbonate



M 244 G

Order no.: 02244100

* = Available on request.

Characteristics

Colour of enclosure group

Light grey

Protection class

IP 66

Enclosure Material

ABS, PC (UV stabilised) and selected sizes in PC UL 94 V0
(additional UL 94 V0 versions on request), seal made of CR;

V215: Vestamid, CR seal; for details see Technical Information

Scope of delivery

Lid and base, lid screws made of V2A, self-tapping screws for
mounting bosses

Note

G = Design with crystal-clear lid.

IP = Ingress protection acc. to DIN EN 60529

Important!

To compensate for pressure when temperatures change and cause moisture in the enclosure, we recommend that you use a pressure compensation element.

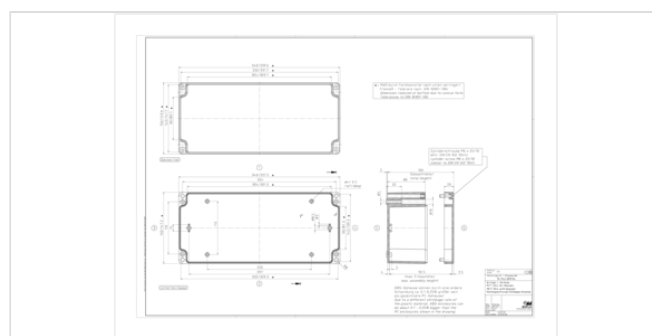
» Additional information

Dimensions

Dimensions

340 x 150 x 100 mm

Product drawing



Technical documentation / Downloads

Technical drawings

3D product data in STEP format: 02244100 M-244-G.stp (527.6 KB)
Drawing for mechanical processing: 02244100 M-244-G-G.dxf (691.3 KB)

Milling contours are shown here as a DXF file. (Sub D, USB, HDMI, cable glands, ...)

Product drawing in PDF format: 02244100 M-244-G.pdf (102.0 KB)

Product information

Euromas ABS PC GB.pdf (337.6 KB)

Works Test Certificates

670 WPZ-Euromas-PC DE.pdf (197.3 KB)

670 WPZ-Euromas-PC EN.pdf (191.1 KB)

Matching accessories



Mounting plates, laminated paper (Pertinax), galvanised steel for version 260

22001300 M

For M/T 244-245



Rubber feet, plug-in

22003300 F

For M/T 208-260



DIN rails DIN EN 60715 TH 15, galvanised steel

22002720 TS 15

For M/T 244-245



DIN rails DIN EN 60715 G 32, galvanised steel

22002700 TS 32

For M/T 244-245



DIN rails DIN EN 60715 TH 35, galvanised steel

22002710 TS 35

For M/T 244-245



Set of hinges

22006000 SchM



Screws (SHR) and distance bolts (DIBLZ) for mounting bosses in plastic enclosures

59006101 SHR Z B4,5x7,8 SD = 4.5 / ND = 4.0 / KD = 7.5



Threaded inserts, brass, for mounting bosses in plastic enclosures

59002810 DODGE M3x6,5 ND = 4.0 x 6.5
59002820 DODGE M4x9,5 ND = 5.4 x 9.5