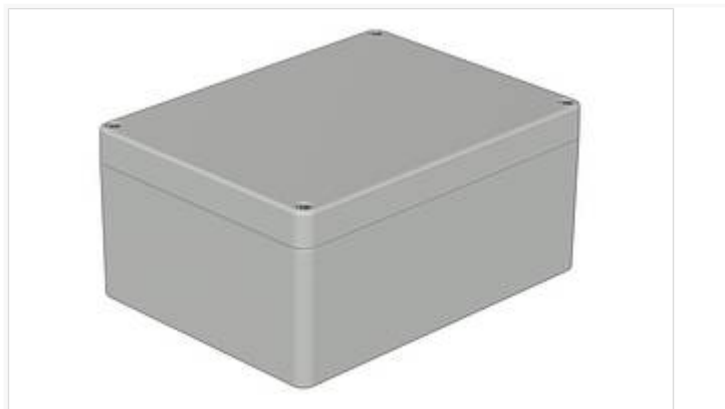


## Euromas ABS / PC / F05

Enclosure, polycarbonate



M 2381

Order no.: 02238200

\* = Available on request.

### Characteristics

Colour of enclosure group

Light grey

Protection class

IP 65

Enclosure Material

ABS, PC (UV stabilised) and selected sizes in PC UL 94 V0 (additional UL 94 V0 versions on request), seal made of CR;

V215: Vestamid, CR seal; for details see Technical Information

### Scope of delivery

Lid and base, lid screws made of V2A, self-tapping screws for mounting bosses

### Note

G = Design with crystal-clear lid.

IP = Ingress protection acc. to DIN EN 60529

### Important!

To compensate for pressure when temperatures change and cause moisture in the enclosure, we recommend that you use a pressure compensation element.

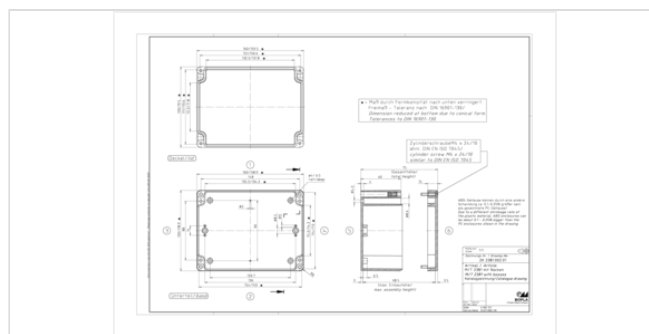
» Additional information

### Dimensions

Dimensions

160 x 120 x 75 mm

Product drawing



## Technical documentation / Downloads

---

### Technical drawings

3D product data in STEP format: 02238200 M-2381.stp (765.3 KB)  
Drawing for mechanical processing: 02238200 M-2381-G.dxf (709.9 KB)

Milling contours are shown here as a DXF file. (Sub D, USB, HDMI, cable glands, ...)

Product drawing in PDF format: 02238200 M-2381.pdf (90.1 KB)  
Product drawing in DXF format: 02238200 M-2381.dxf (673.1 KB)

### Works Test Certificates

670 WPZ-Euromas-PC DE.pdf (197.3 KB)  
670 WPZ-Euromas-PC EN.pdf (191.1 KB)

### Product information

Euromas ABS PC GB.pdf (337.6 KB)

## Matching accessories

---



Mounting plates, laminated paper (Pertinax), galvanised steel for version 260

22001100 M For EM/ET 238, M/T 238, M/T 246



Knurled screws

22003200 RD For M/T 240-2401



Rubber feet, plug-in

22003300 F For M/T 208-260



Wall brackets on rear, screw-on, polycarbonate

22004900 WL For M/T 210-243, M/T 246-253



DIN rails DIN EN 60715 TH 15, galvanised steel

22002000 TS 15 For M/T 219-220, M/T 231-235, M/T 238, M/T 246, P 325, M/T 2381



DIN rails DIN EN 60715 G 32, galvanised steel

22002010 TS 32 For M/T 219-220, M/T 231-235, M/T 238, M/T 246, P 316, P 325, M/T 2381



DIN rails DIN EN 60715 TH 35, galvanised steel

22002020 TS 35

For M/T 219-220, M/T 231-235, M/T 238,  
M/T 246, P 316, P 325, M/T 2381



Screws (SHR) and distance bolts (DIBLZ) for mounting bosses in plastic enclosures

59006101 SHR Z B4,5x7,8

SD = 4.5 / ND = 4.0 / KD = 7.5



Threaded inserts, brass, for mounting bosses in plastic enclosures

59002810 DODGE M3x6,5

ND = 4.0 x 6.5

59002820 DODGE M4x9,5

ND = 5.4 x 9.5