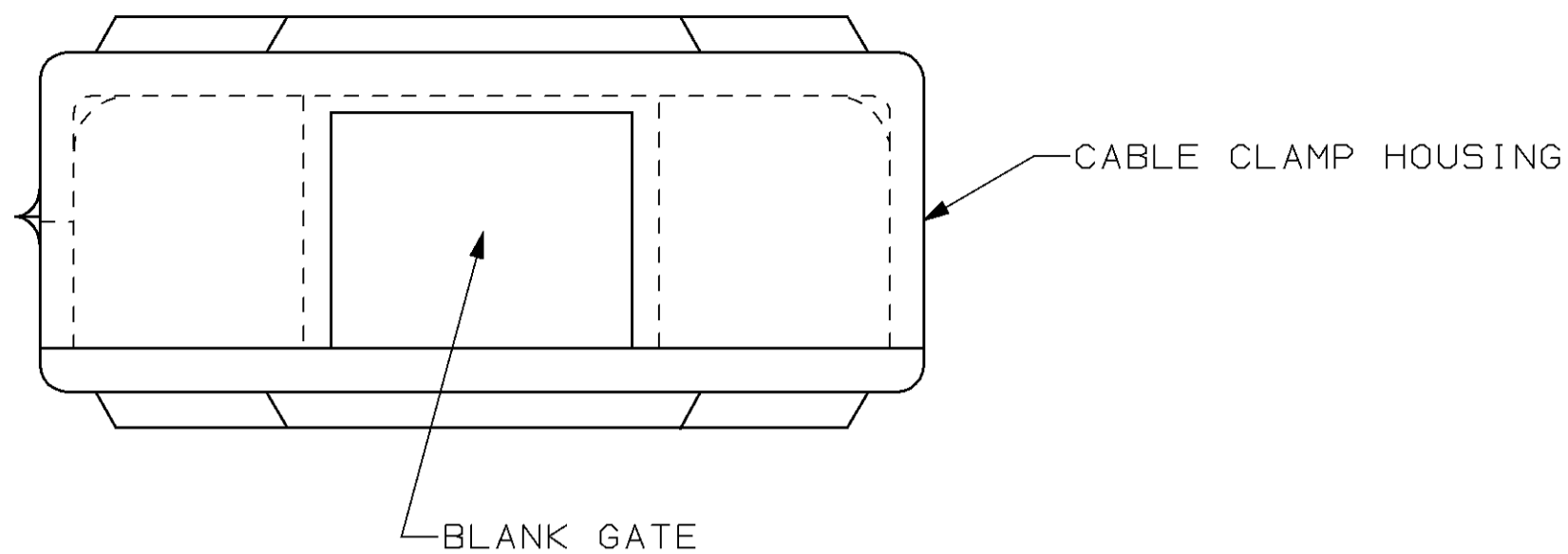
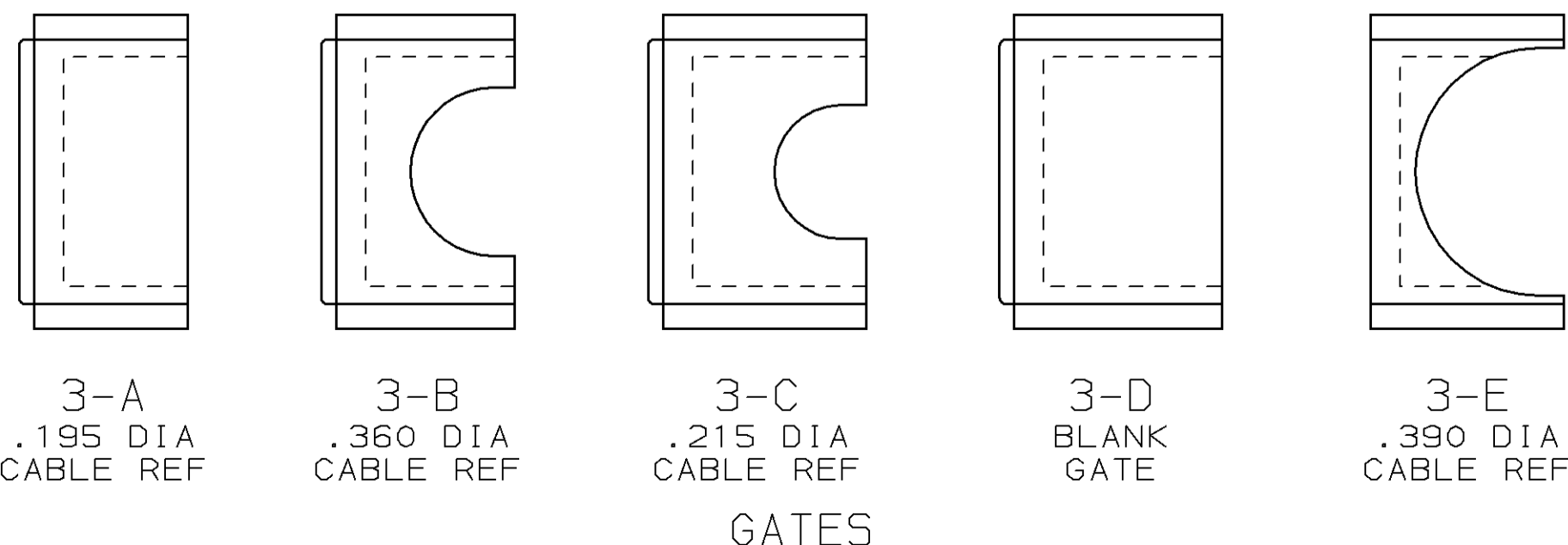
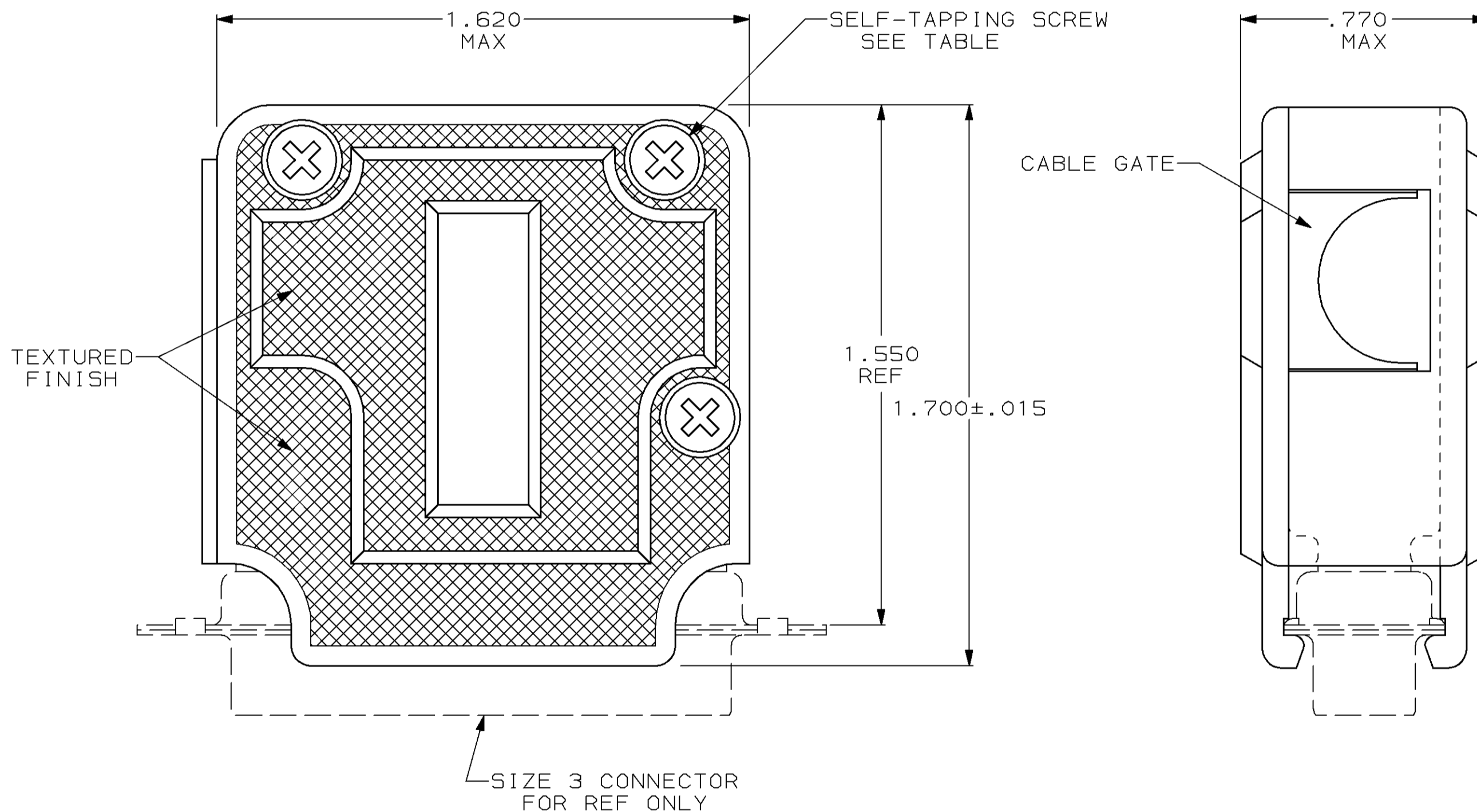


THIS DRAWING IS UNPUBLISHED. RELEASED FOR PUBLICATION, 19 .
 © COPYRIGHT 19 BY AMP INCORPORATED, HARRISBURG, PA. ALL INTERNATIONAL RIGHTS RESERVED. AMP PRODUCTS MAY BE COVERED BY U.S. AND FOREIGN PATENTS AND/OR PATENTS PENDING.

LOC		DIST		P		F		REVISIONS			
BD	48			ZONE	LTR	DESCRIPTION	DATE	APPD			
					E	REV PER EC 0020-1140-95	19 DEC 95	JS			
					F	REV PER EC 0640-341-98	10 SEP 98	JK			



- PARTS PACKAGED UNASSEMBLED.
 - CABLE GATES ARE INTERCHANGEABLE ALLOWING 90° & 180° CABLE EXIT.
- ⚠ COMPONENTS INDIVIDUALLY BULK PACKED AND SHIPPED AS A UNIT PACKAGE KIT.



OBSOLETE	SLOTTED	⚠	207345-4
OBSOLETE	SLOTTED	AS SHOWN	207345-3
	CROSS-RECESSED	⚠	207345-2
	CROSS-RECESSED	AS SHOWN	207345-1
	SCREW VERSION	PACKAGING	PART NUMBER

UNLESS OTHERWISE SPECIFIED DIMENSIONS ARE IN INCHES TOLERANCES ON :
 2 PL DEC ± -
 3 PL DEC ± .005
 ANGLES ± -

MATERIAL MOLDED PARTS: POLYPROPYLENE, COLOR: BLACK
 SCREWS: STEEL PER ASTM A108

FINISH SCREWS: ZINC PHOSPHATE PER MIL-P-16232

DR 9-16-86 S. WELDON
 CHK 9-16-86 C. RICHARD
 APPD 9-16-86 S. SCHUFERLY

APPD 9-16-86 V. KUMAR
 PRODUCT SPEC -

APPLICATION SPEC -
 WEIGHT -

AMP AMP INCORPORATED Harrisburg, Pa. 17105

NAME
 CABLE CLAMP KIT, SIZE 3,
 ONE PIECE, 90° & 180° EXIT,
 AMPLIMITE®

SIZE **C** FSCM NO 00779 DRAWING NO 207345

SCALE NTS SHEET 1 OF 1

207345

A