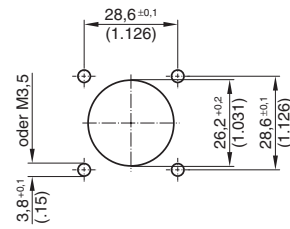


## C 16-3

Shell size 1  
Male receptacles



C



Panel cutout

Description	Drawing	No. of cont.	Contacts <sup>2)</sup>	Part No.
Male receptacle for crimp contacts, style C, without contacts <sup>1)</sup>		8 + PE	.N01 016 00...	C016 10C008 000 1
		14 + PE	11 x .N01 015 00... 4 x .N01 025 00...	C016 10C014 000 1
		12 + 3 + PE	12 x .N01 015 00... 4 x .N01 016 00...	C016 10C015 000 1
		17 + PE	.N01 015 00...	C016 10C017 000 1

## C 16-3

Shell size 1  
Accessories



Description	Drawing	Part No.	
Protective cap for male cable connector and male receptacle		for male cable connector  C016 00U000 000 1	for male receptacle  C016 00U000 020 1
Protective cap for female cable connector and female receptacle		for male cable connector  C016 00V000 000 1	for male receptacle  C016 00V000 020 1
Disassembly tool for pin- and socket inserts		FH 0000-016	

<sup>1)</sup> Please order crimp contacts separately, see page 21/22.

<sup>2)</sup> Part No system for crimp contacts, see page 23.