



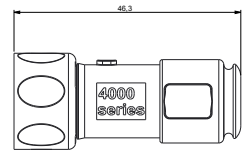
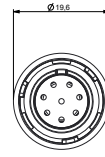
- Sealed to IP68 when mated
- IP68 rating tested at 1.054kg/sq cm (15lb/sq in) 10m depth for 2 weeks
- 2, 3, 4, 6, 8, 10 & 12 Contact configuration
- Power ratings up to 13A, 600V
- Cable range from 3 to 7mm
- Diameter over coupling ring 19.8mm
- Flex, Inline, Rear Panel and PCB mounting body styles
- Colour coded O-rings & washers for easy identification purposes
- Plug and Socket versions in all body styles
- Flame Retardant moulding material - Polybutylene Terephthalate/Polycarbonate (PBT/PC) UL94-V0
- Contacts supplied separately (except PCB versions)
- Sealing caps available to maintain IP68 rating
- Crimp and solder contacts
- UL, cUL and VDE approvals
- EN60068-2-64 Vibration Resistance

Flex Cable Connector



PXP4010

- Mates with Inline or Panel mounting versions PXP4011, PXP4013
- Plug or socket
- 2, 3, 4, 6, 8, 10 & 12 Contacts
- ¼ turn locking ring
- Contacts supplied separately

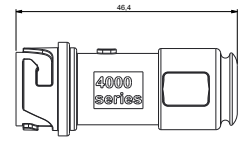


Inline Cable Connector



PXP4011

- Mates with Flex Cable connector PXP4010
- Plug or socket
- 2, 3, 4, 6, 8, 10 & 12 Contacts
- For Inline cable connection
- Contacts supplied separately

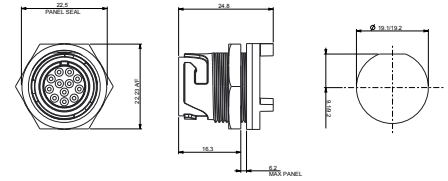


Rear Panel Mounting Connector  
(locking nut included)



PXP4013

- Mates with Flex Cable connector PXP4010
- Plug or socket
- Single hole fixing
- Contacts supplied separately
- 2, 3, 4, 6, 8, 10 & 12 Contacts

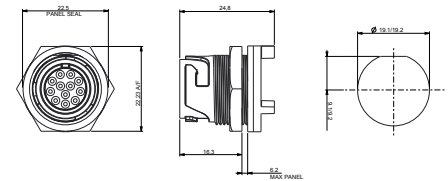


PCB Mounting Connector  
(locking nut included)



PXP4013/XXX/PC

- Mates with Flex Cable connector PXP4010
- Plug or socket
- PCB Rear Panel mounting
- Straight PC spills
- Supplied with pre-loaded gold plated contacts
- 2, 3, 4, 6, 8, 10 & 12 Contacts



Sealing Caps



PXP4081 PXP4082 PXP4083

- Maintains IP68 sealed rating of unmated connectors

**Part no.**

PXP4081

**Description**

Sealing cap for use with PXP4010 & PXP4040

PXP4082

Sealing cap for use with PXP4011

PXP4083

Sealing cap for use with PXP4013 & PXP4043

Gland Packs



**Part no.**      **Description**

PXP4088/0305      Pack of 4 pairs cable glands and collets to suit cables from 3.0 to 5.0mm diameter.

PXP4088/0507      Pack of 4 pairs cable glands and collets to suit cables from 5.0 to 7.0mm diameter.

O-ring & washer pack



**Part no.**      **Description**

PXP4089/YL      Yellow coloured O-ring and washer pack

PXP4089/BL      Blue coloured O-ring and washer pack

PXP4089/RD      Red coloured O-ring and washer pack

PXP4089/WH      White coloured O-ring and washer pack

PXP4089/GN      Green coloured O-ring and washer pack

# BUCCANEER FOR POWER

## 4000 Series Buccaneer

Specifications



### Crimp Contacts

Contacts	Current Rating	Plug Part No.	Socket Part No.	Pack Qty	Cable Acceptance (dia)
2, 3	13A /*10A	SA3350	SA3349	10	16 - 18 AWG
4, 6, 8	8A /*5A	SA3348	SA3347	10	18 - 20 AWG
10, 12	3A /*3A	SA3180	SA3179	10	22 - 24 AWG

### Solder Contacts

Contacts	Current Rating	Plug Part No.	Socket Part No.	Pack Qty	Cable Acceptance (dia)
2,3	13A /*10A	SA3350/1	SA3349/1	10	16 - 18 AWG
4, 6, 8	8A /*5A	SA3348/1	SA3347/1	10	18 - 20 AWG
10, 12	3A /*3A	SA3180/1	SA3179/1	10	22 - 24 AWG

### Insertion / Extraction

	Contacts	Contact Rating	Colour	Part No
Insertion/Extraction Tool	2, 3	13A /*10A	Blue	13027/2
Insertion/Extraction Tool	4, 6, 8	8A /*5A	Red	13027/1
Insertion/Extraction Tool	10, 12	3A /*3A	Green	13027

### Crimp tools

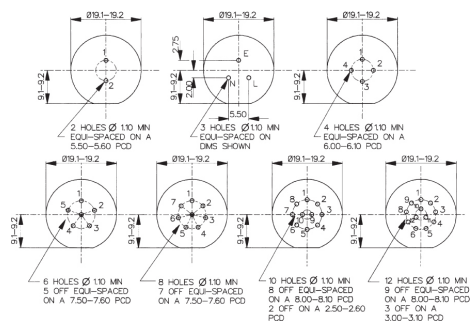
	Contacts	Contact Rating	Colour	Part No
Positioner	2, 3	13A/*10A	Orange	14025/1618
Positioner	4, 6, 8	8A /*5A	Grey	14025/1820
Positioner	10, 12	3A /*3A	Yellow	14025/2224
8 Indent Crimp Tool for use with positioners				14025

\*Current rating for CSA standards

### PXP4013 PCB Contact Layout

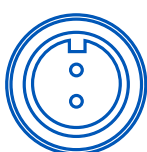
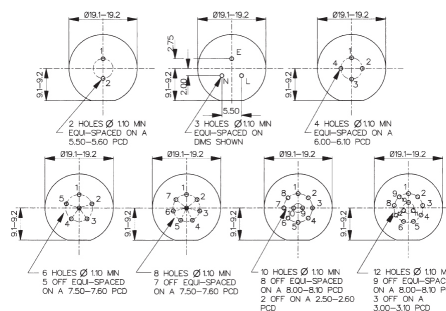
#### Sockets

Contact numbers viewed from rear of panel



#### Plugs

Contact numbers viewed from rear of panel



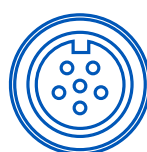
2 Contacts  
(13 Amp)



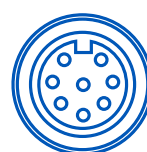
3 Contacts  
(13 Amp)



4 Contacts  
(8 Amp)



6 Contacts  
(8 Amp)



8 Contacts  
(8 Amp)



10 Contacts  
(3 Amp)




12 Contacts  
(3 Amp)

**Electrical:**

No. Contacts:	2 & 3	4, 6 & 8	10 & 12
Current Rating UL / VDE:	13A	8A	3A
Current Rating CSA:	10A	5A	3A
Voltage Rating:	600V AC/DC	320V AC/DC	160V AC/DC
Contact Resistance:	<5mΩ		
Insulation Resistance:	>10 <sup>6</sup> MΩ (@ 500V DC)		
AC Breakdown voltage:	2.5kV		
Cycles:	>1000		

Operating Temperature:  
 Flex and panel types -40°C to +120°C

Approvals:

-  UL (Underwriters Laboratory) (including cUL)
-  VDE (Verband der Elektrotechnik)

**Material:**

Flex and panel types:  
 Body Mouldings: Polybutylene Terephthalate/  
 Polycarbonate (PBT/PC)

Flammability Rating: UL94V-0  
 UV Resistance: To EN 50021:1999

Contacts: Copper alloy, Gold plated

O Rings: Silicone

Panel Sealing O Ring: Silicone

**RoHS** Compliant

**Mechanical:**

Sealing: IP68 to En60529:1992+A2:2013 (10m depth for 2 weeks)

Vibration: BS EN 60068-2-64:2008 Test Fh  
 BS EN 60068-2-27:2009 Test Ea

Cable Acceptance: 3.0 - 7.0mm

Contact Accommodation: 2 & 3 Contacts, 16 - 18 AWG  
 4, 6 & 8 Contacts, \*18 - 20 AWG  
 10 & 12 Contacts, 22 - 24 AWG  
 \*Solid Core Wire Only

Termination: Crimp, solder and PCB

Insertion/Withdrawal Force:  
 No. Contacts: 2 & 3 4, 6, 8 10 & 12  
 Insertion Force (typ): 25N 28N 32N  
 Withdrawal Force (typ): 12N 15N 18N

Panel mount (PXP4013)  
 Front fixing nut: 1.0-1.1Nm (9lbf.in.)

Cable Retention force:  
 3.0mm dia 60N  
 4.0 to 7.0mm dia 80N

Panel thread PXP4013: 18.97x26TPI Whitworth form to BS84 med fit

**Dimensions:**

Overall dimensions of connectors when mated together

Flex + Inline 80mm  
 Dia. over coupling ring 19.7mm

<b>PXP40XX</b>	<b>/</b>	<b>XX</b>	<b>X</b>	<b>/</b>	<b>XXXX</b>
<p><b>Body Styles</b></p> <p><b>PXP4010</b> = Flex  <b>PXP4011</b> = Inline  <b>PXP4013</b> = Rear panel/PCB mounting</p>		<p><b>Number of Contacts</b></p> <p>02 03 04 06 08 10 12</p>	<p><b>Contact Type</b></p> <p><b>P</b> = Plug,  <b>S</b> = Socket</p>		<p><b>For PXP4010 and PXP4011 cable connectors</b>  <b>- Cable Entry Size:</b></p> <p>3035 = 3.0 - 3.5mm (Light Grey)                      3540 = 3.5 - 4.0mm (Grey)                      4045 = 4.0 - 4.5mm (Green)                      4550 = 4.5 - 5.0mm (Red)</p> <p>5055 = 5.0 - 5.5mm (Yellow)                      5560 = 5.5 - 6.0mm (Blue)                      6065 = 6.0 - 6.5mm (White)                      6570 = 6.5 - 7.0mm (Black)</p> <p>Cable gland and collet supplied in colour coded pairs.</p> <p>For PXP4013 PCB/Rear Panel Mount:                      PC = Pre-loaded PC Plugs                      Blank = no Plugs supplied</p>
<p><b>Examples:</b></p> <p><b>PXP4010/03S/4045</b> = Flex cable connector, 3 socket contacts with gland and collet for cables between 4.0 and 4.5mm diameter (supplied less contacts).  <b>PXP4013/08P</b> = Rear panel mounting connector, for 8 Plug contacts (supplied less contacts).  <b>PXP4013/03P/PC</b> = Rear panel/PCB connector, 3 Plug contacts, PCB mounting (supplied with contacts loaded).</p>					