

THIS DRAWING IS UNPUBLISHED. RELEASED FOR PUBLICATION 20
 © COPYRIGHT 20 BY - ALL RIGHTS RESERVED.

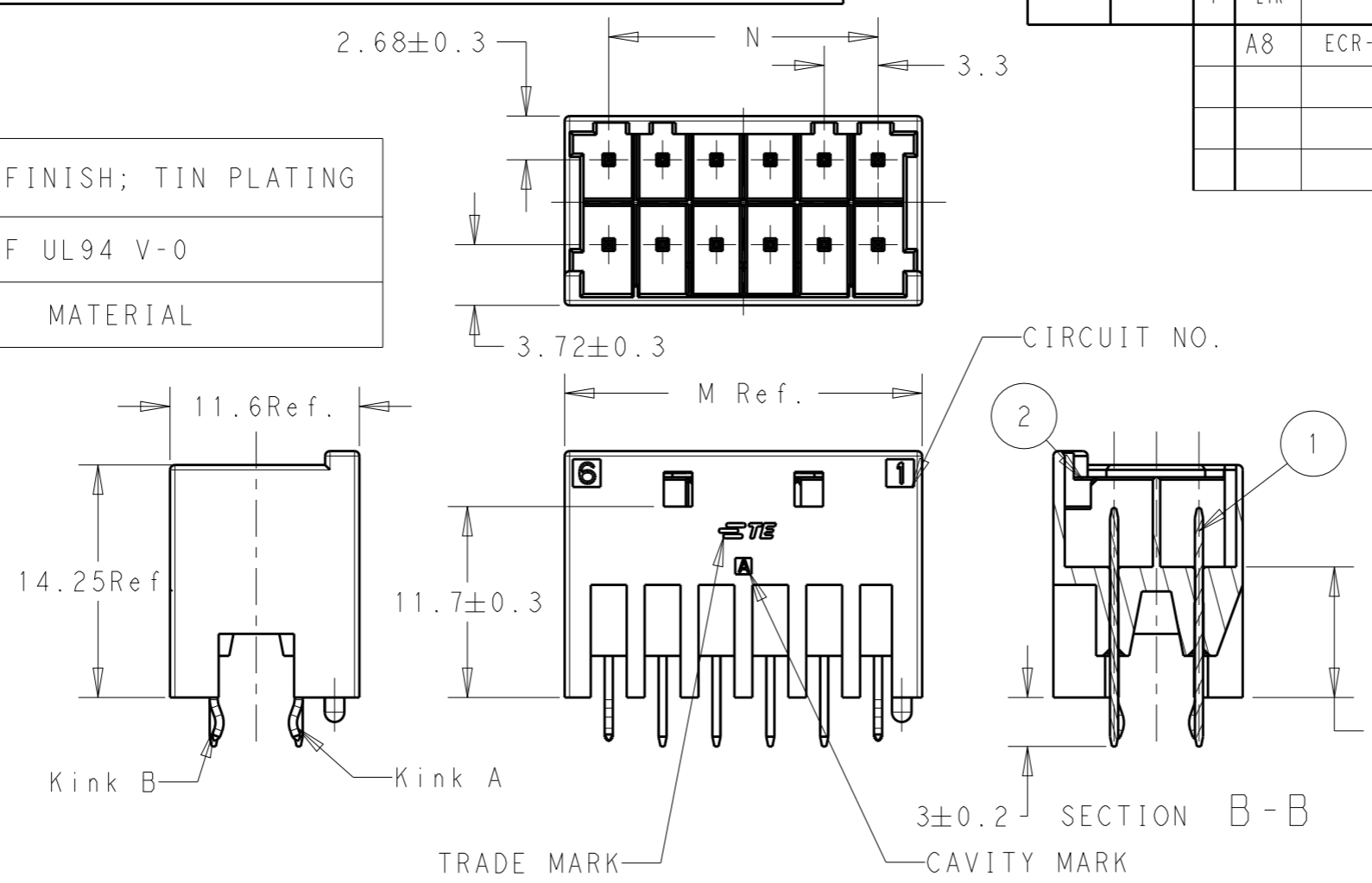
| LOC | DIST | REVISIONS | | | |
|-----|------|-------------|---------------|-----------|-------|
| P | LTR | DESCRIPTION | DATE | DWN | APVD |
| - | - | A8 | ECR-18-004630 | 29MAR2018 | SC BH |

TABLE 1

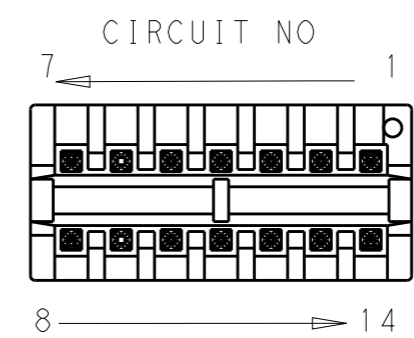
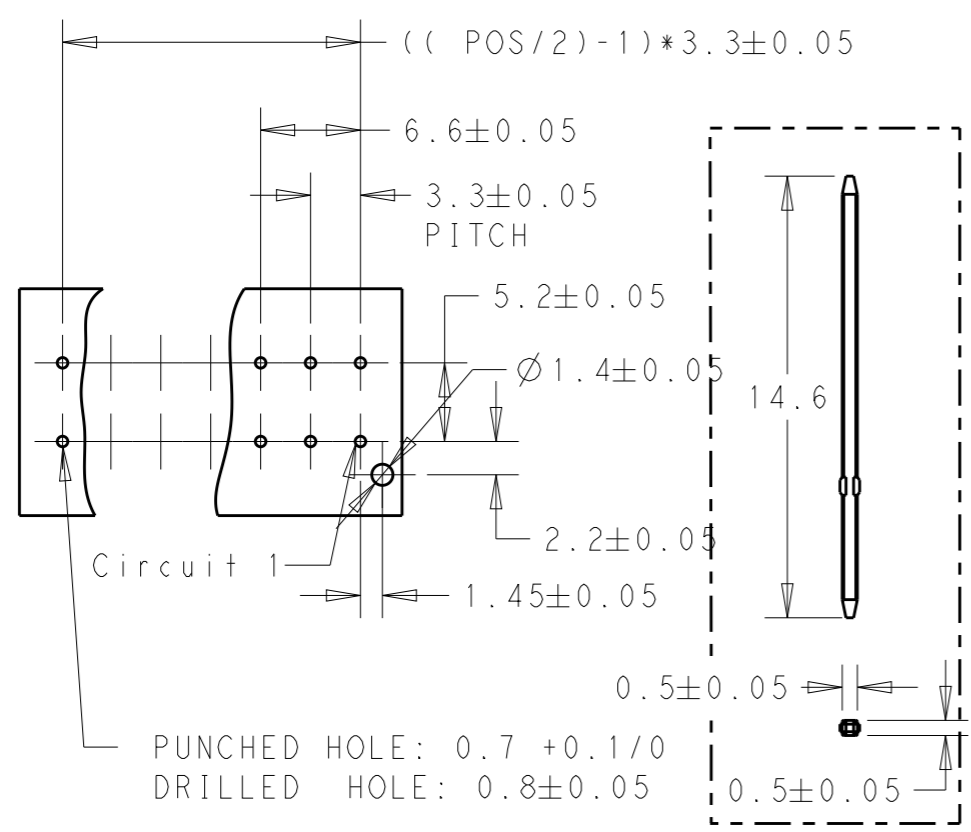
| NO. | NAME | MATERIAL |
|-----|--------------|----------------------------|
| 1 | POST CONTACT | BRASS, FINISH; TIN PLATING |
| 2 | HDR HOUSING | PA 66 GF UL94 V-0 |

KINK POSITION TABLE 2

| POSITION | KINK A | KINK B |
|----------|--------|--------|
| 4 | 1,2 | 3,4 |
| 6 | 1,3 | 4,6 |
| 8 | 1,4 | 5,8 |
| 10 | 1,5 | 6,10 |
| 12 | 1,6 | 7,12 |
| 14 | 1,7 | 8,14 |



- NOTES:
- 1. RECOMMENDED PCB LAYOUT
 - 2. APPLICABLE PCB THICKNESS 1.6MM
 - 3. MATERIAL SEE TABLE 1
 - 4. KINK FORM SEE TABLE 2
 - 5. MATING PLUG HOUSING SEE TABLE 3
 - 6. PIN DIMENSION
 - 7. ADDITIONAL REQUESTS FOR P/N: 5-1971906-7, 6-1971906-7, 5-1971906-6
 - 8. ADDITIONAL REQUESTS FOR P/N: 5-1971906-3, 5-1971906-5, 6-1971906-5:
 - 9. PRELIMINARY-NOT FOR PRODUCTION



1 RECOMMENDED PCB LAYOUT

| | | | | | | | |
|---|--|--------------|------------|------------------|---------------------|--|---------------|
| THIS DRAWING IS A CONTROLLED DOCUMENT. | | DWN | LZH | 08JAN2013 | TE Connectivity | NAME NEXT GENERATION G13.3 HEADER ASSEMBLY 2 ROW | RESTRICTED TO |
| DIMENSIONS: mm | | CHK | HAPYE.WU | 08JAN2013 | | | |
| TOLERANCES UNLESS OTHERWISE SPECIFIED: | | APVD | YH.MAO | 08JAN2013 | | | |
| 0 PLC ±- 1 PLC ±0.5 2 PLC ±0.13 3 PLC ±0.013 4 PLC ±0.0001 ANGLES ±- | | PRODUCT SPEC | 108-106094 | | | | |
| MATERIAL | | FINISH | | APPLICATION SPEC | 114-106094 | | SIZE |
| 3 | | - | | WEIGHT | - | | A300779 |
| | | | | Customer Drawing | SCALE | 5:2 | SHEET 1 OF 3 |
| | | | | | | | REV A8 |

THIS DRAWING IS UNPUBLISHED.

RELEASED FOR PUBLICATION

20

LOC -

DIST -

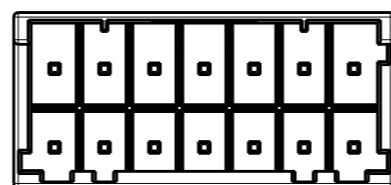
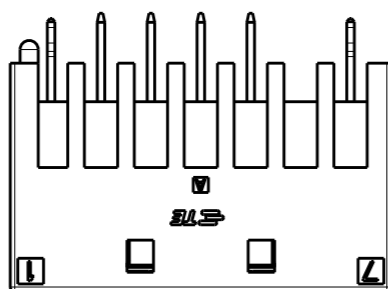
REVISIONS

© COPYRIGHT 20 BY -

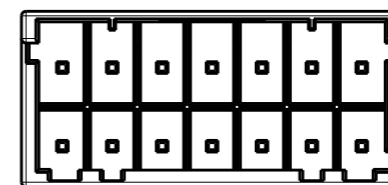
ALL RIGHTS RESERVED.

| P | LTR | DESCRIPTION | DATE | DWN | APVD |
|---|-----|-------------|------|-----|------|
| | | SEE SHEET 1 | | | |

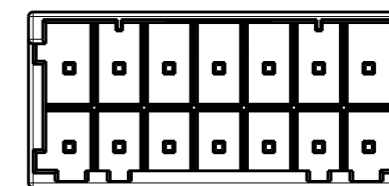
5-1971906-7:
KEY A, NATURAL



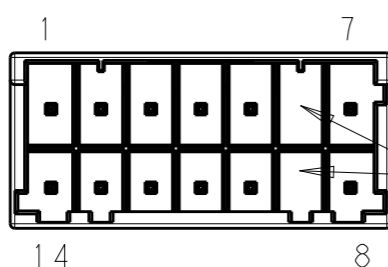
KEYING A



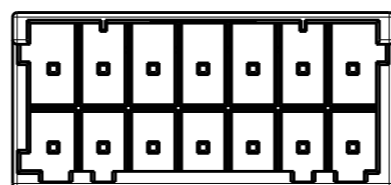
KEYING B



KEYING C

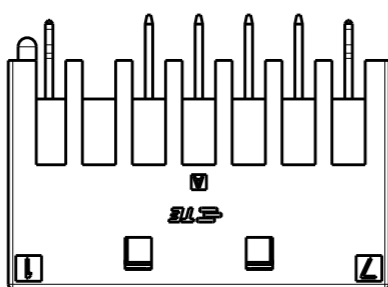


NO PIN
7

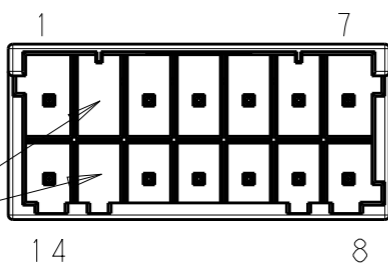
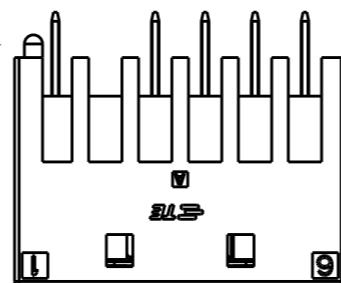


KEYING D

6-1971906-7:
KEY B, BLUE



5-1971906-6:
KEY A, NATURAL



NO PIN
7

NO PIN
7

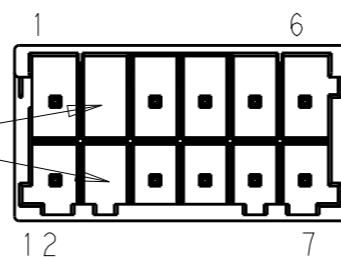
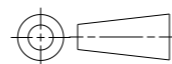


TABLE 3 5

| MATING PLUG P/N | COLOR | KEYING | N | M | POS | PART NO. |
|-----------------|---------|--------|------|------|-----|-------------|
| 2-1971905-7 | BLUE | B | 19.8 | 25.2 | 14 | 6-1971906-7 |
| 1-1971905-7 | NATURAL | A | | | 14 | 5-1971906-7 |
| 4-1971905-7 | YELLOW | D | | | 14 | 4-1971906-7 |
| 3-1971905-7 | RED | C | | | 14 | 3-1971906-7 |
| 2-1971905-7 | BLUE | B | 16.5 | 21.9 | 14 | 2-1971906-7 |
| 1-1971905-7 | NATURAL | A | | | 14 | 1-1971906-7 |
| 1-1971905-6 | NATURAL | A | | | 12 | 5-1971906-6 |
| 4-1971905-6 | YELLOW | D | | | 12 | 4-1971906-6 |
| 3-1971905-6 | RED | C | 16.5 | 21.9 | 12 | 3-1971906-6 |
| 2-1971905-6 | BLUE | B | | | 12 | 2-1971906-6 |
| 1-1971905-6 | NATURAL | A | | | 12 | 1-1971906-6 |
| 4-1971905-5 | YELLOW | D | | | 10 | 4-1971906-5 |
| 3-1971905-5 | RED | C | 13.2 | 18.6 | 10 | 3-1971906-5 |
| 1-1971905-5 | BLUE | B | | | 10 | 2-1971906-5 |
| 1-1971905-5 | NATURAL | A | | | 10 | 1-1971906-5 |
| 4-1971905-4 | YELLOW | D | | | 8 | 4-1971906-4 |
| 3-1971905-4 | RED | C | 9.9 | 15.3 | 8 | 3-1971906-4 |
| 2-1971905-4 | BLUE | B | | | 8 | 2-1971906-4 |
| 1-1971905-4 | NATURAL | A | | | 8 | 1-1971906-4 |
| 4-1971905-3 | YELLOW | D | | | 6 | 4-1971906-3 |
| 3-1971905-3 | RED | C | 6.6 | 12 | 6 | 3-1971906-3 |
| 2-1971905-3 | BLUE | B | | | 6 | 2-1971906-3 |
| 1-1971905-3 | NATURAL | A | | | 6 | 1-1971906-3 |
| 4-1971905-2 | YELLOW | D | | | 4 | 4-1971906-2 |
| 3-1971905-2 | RED | C | 3.3 | 8.7 | 4 | 3-1971906-2 |
| 2-1971905-2 | BLUE | B | | | 4 | 2-1971906-2 |
| 1-1971905-2 | NATURAL | A | | | 4 | 1-1971906-2 |

THIS DRAWING IS A CONTROLLED DOCUMENT.

DIMENSIONS:
mm



TOLERANCES UNLESS OTHERWISE SPECIFIED:

- 0 PLC ±-
- 1 PLC ±0.5
- 2 PLC ±0.13
- 3 PLC ±0.013
- 4 PLC ±0.0001
- ANGLES ±-

MATERIAL -

FINISH -

DWN 08JAN2013

LZH

CHK 08JAN2013

HAPYE.WU

APVD 08JAN2013

YH.MAO

PRODUCT SPEC

108-106094

APPLICATION SPEC

114-106094

WEIGHT -

Customer Drawing



TE Connectivity

NAME
NEXT GENERATION G13.3
HEADER ASSEMBLY 2 ROW

| SIZE | CAGE CODE | DRAWING NO | RESTRICTED TO |
|------|-----------|------------|---------------|
| A3 | 00779 | 1971906 | - |

SCALE - SHEET 2 OF 3 REV A8

THIS DRAWING IS UNPUBLISHED.

RELEASED FOR PUBLICATION

20

LOC -

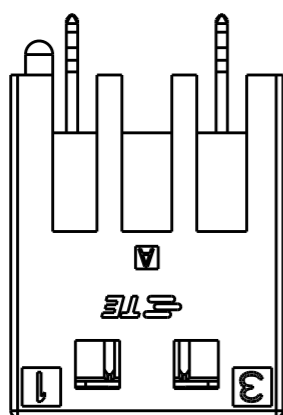
DIST -

REVISIONS

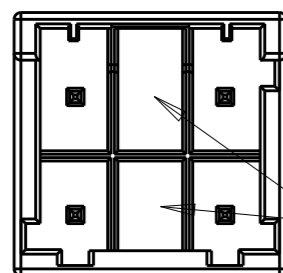
© COPYRIGHT 20 BY - ALL RIGHTS RESERVED.

| P | LTR | DESCRIPTION | DATE | DWN | APVD |
|---|-----|-------------|------|-----|------|
| | | SEE SHEET 1 | | | |

5-1971906-3:
KEY A, NATURAL



1 3

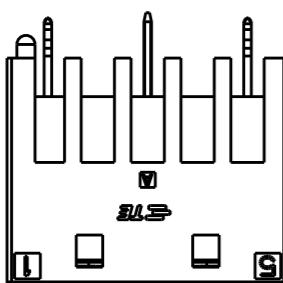


6 4

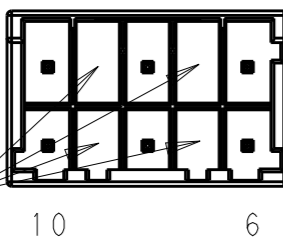
NO PIN



5-1971906-5:
KEY A, NATURAL



1 5

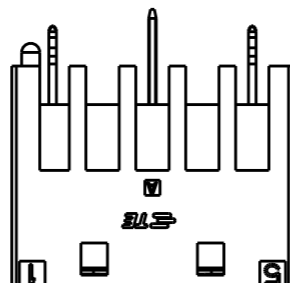


10 6

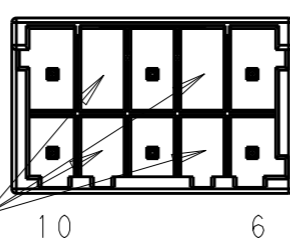
NO PIN



6-1971906-5:
KEY B, BLUE

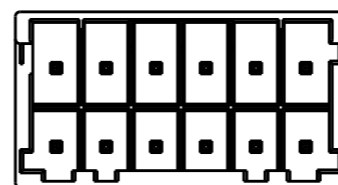


1 5

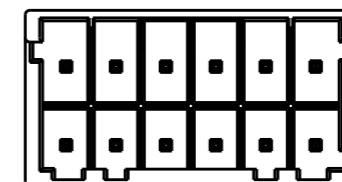


10 6

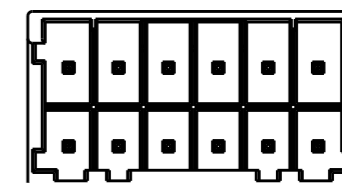
NO PIN



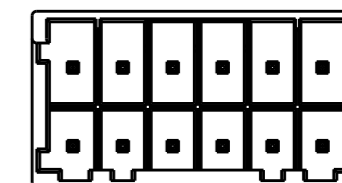
KEYING A



KEYING B



KEYING C



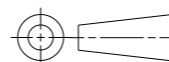
KEYING D

TABLE 3

| POS NUMBER REMOVED | MATING PLUG P/N | COLOR | KEYING | N | M | POS | PART NO. |
|--------------------|-----------------|---------|--------|------|------|-----|-------------|
| 2, 4, 7, 9 | 2-1971905-5 | BLUE | B | 13.2 | 18.6 | 10 | 6-1971906-5 |
| 2, 4, 7, 9 | 1-1971905-5 | NATURAL | A | 13.2 | 18.6 | 10 | 5-1971906-5 |
| 2, 5 | 1-1971905-3 | NATURAL | A | 6.6 | 12 | 6 | 5-1971906-3 |

THIS DRAWING IS A CONTROLLED DOCUMENT.

DIMENSIONS:
mm



TOLERANCES UNLESS OTHERWISE SPECIFIED:

- 0 PLC ±-
- 1 PLC ±0.5
- 2 PLC ±0.13
- 3 PLC ±0.013
- 4 PLC ±0.0001
- ANGLES ±-

MATERIAL -

FINISH -

DWN 08JAN2013

LZH

CHK 08JAN2013

HAPYE.WU

APVD 08JAN2013

YH.MAO

PRODUCT SPEC

108-106094

APPLICATION SPEC

114-106094

WEIGHT -

Customer Drawing



TE Connectivity

NAME
NEXT GENERATION G13.3
HEADER ASSEMBLY 2 ROW

SIZE CAGE CODE DRAWING NO RESTRICTED TO

A3 00779 C-1971906 -

SCALE 5:2 SHEET 3 OF 3 REV A8

Mouser Electronics

Authorized Distributor

Click to View Pricing, Inventory, Delivery & Lifecycle Information:

[TE Connectivity:](#)

[1-1971906-3](#)