

Bocube

Enclosures, ABS, single-coloured



B 140804 ABS 7024
Order no.: 96033144

* = Available on request.

Characteristics

Colour of enclosure group
Graphite grey, similar to RAL 7024

Colour of enclosure group
Graphite grey

Protection class
IP 66, 68 - 1,2m (2 hours)

Enclosure Material

ABS or PC UL 94 V0 (material is suitable for outdoor use; f1-listing according to UL 746C)

PU seal, foamed; for details please see Technical Information

Scope of delivery

Lid and base, hinged quick-release catches

Note

Material shrinkage may result in ABS enclosures being approx. 0.1 - 0.25 % larger.

Important!

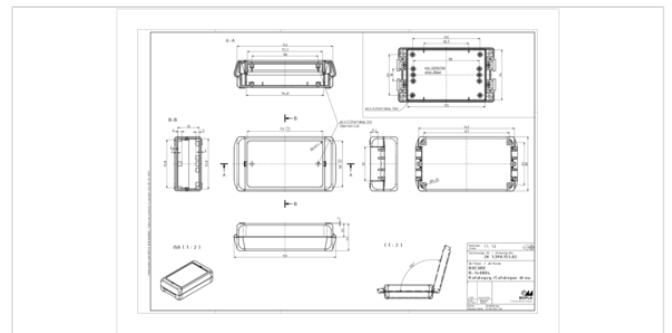
To compensate for pressure when temperatures change and cause moisture in the enclosure, we recommend that you use a pressure compensation element.

» Additional information

Dimensions

Dimensions
151 x 80 x 40 mm

Product drawing



Technical documentation / Downloads

Technical drawings

3D product data in STEP format: 96033144 B-140804-ABS-7024.stp (7.2 MB)

Drawing for mechanical processing: 96033144 B-140804-ABS-7024-G.dxf (2.8 MB)

Milling contours are shown here as a DXF file. (Sub D, USB, HDMI, cable glands, ...)

Product drawing in PDF format: 96033144 B-140804-ABS-7024.pdf (178.4 KB)

Product drawing in DXF format: 96033144 B-140804-ABS-7024.dxf (3.5 MB)

Product information

Bocube GB.pdf (1.9 MB)

Highlights Bocube.pdf (3.8 MB)

Works Test Certificates

688 WPZ-Bocube-PC-V0 DE.pdf (184.6 KB)

689 WPZ-Bocube-ABS DE.pdf (165.1 KB)

689 WPZ-Bocube-ABS EN.pdf (160.3 KB)

688 WPZ-Bocube-PC-V0 EN.pdf (179.1 KB)

Matching accessories



Hinged quick-release catches (Set), polycarbonate UL 94 V0 or ABS

96330100	B SC 08 ABS 3000	For B 0808.., B 1008.., B 1408.., B 1808..	Flame red
96330102	B SC 08 ABS 5002	For B 0808.., B 1008.., B 1408.., B 1808..	Ultramarine blue
96330109	B SC 08 ABS 6029	For B 0808.., B 1008.., B 1408.., B 1808..	Mint green
96330104	B SC 08 ABS 7024	For B 0808.., B 1008.., B 1408.., B 1808..	Graphite grey
96330105	B SC 08 ABS 7035	For B 0808.., B 1008.., B 1408.., B 1808..	Light grey
96330103	B SC 08 ABS 1023	For B 0808.., B 1008.., B 1408.., B 1808..	Traffic yellow



Hand-operated hinged catch (set), polycarbonate UL 94 V0 or ABS

96930100	B SC HB 08 ABS 3000	For B 0808.., B 1008.., B 1408.., B 1808..	Flame red
96930102	B SC HB 08 ABS 5002	For B 0808.., B 1008.., B 1408.., B 1808..	Ultramarine blue
96930109	B SC HB 08 ABS 6029	For B 0808.., B 1008.., B 1408.., B 1808..	Mint green
96930104*	B SC HB 08 ABS 7024	For B 0808.., B 1008.., B 1408.., B 1808..	Graphite grey
* 96930105*	B SC HB 08 ABS 7035	For B 0808.., B 1008.., B 1408.., B 1808..	Light grey
* 96930103	B SC HB 08 ABS 1023	For B 0808.., B 1008.., B 1408.., B 1808..	Traffic yellow



Wall brackets

96510004	B WL 7024	For B 08... - B 26...	Graphite grey
96510005	B WL 7035	For B 08... - B 26...	Light grey



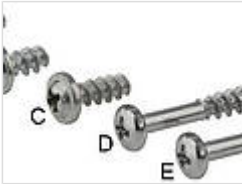
Mounting panels, laminated paper, 2 mm

96603100 B M 1408 For B 1408..



Front panels, 2 mm, natural-coloured anodised aluminium

96703100 B FP 1408 For B 1408.., front panel thickness 1.5 mm



Sets of screws

96300000 B SHR D (for optional screwing of enclosures B 0808 - 2617)
96600010 B M-SHR C (for fixing mounting panels B M 1008-2736)
96700000 B FP-SHR A (for fixing front panels)



Distance bolts

96708000 DIBLZ AK 30x5/IM3/8 ND = 2,4 - 2,6, for B...04



Blanking plugs to determine the hinge side

96410000 B VS 3000 Flame red
96410005 B VS 7035 Light grey
96410004 B VS 7024 Graphite grey



DIN rail acc. to DIN EN 60715 TH 15

22151101 TS 15 For EM/ET 213, EM/ET 215-217, EM/ET 227, B 1408.., B 1413..



DIN rail acc. to DIN EN 60715 G 32

22321101 TS 32 For EM/ET 213, EM/ET 215-217, EM/ET 227, B 1408.., B 1413..



DIN rail acc. to DIN EN 60715 TH 35

22351101 TS 35 For EM/ET 213, EM/ET 215-217, EM/ET 227, B 1408.., B 1413..



Pressure compensation membrane DAE

52011000 DAE-D11 Self-adhesive membrane ø 11 mm

