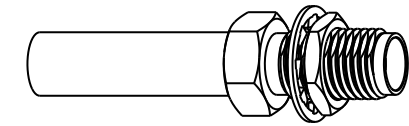


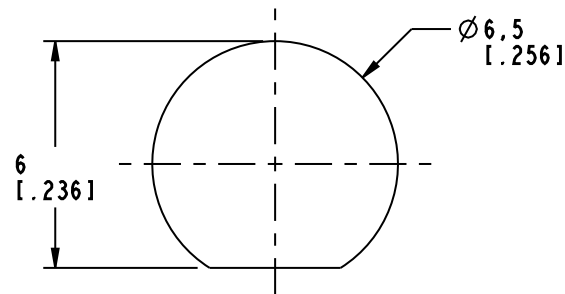
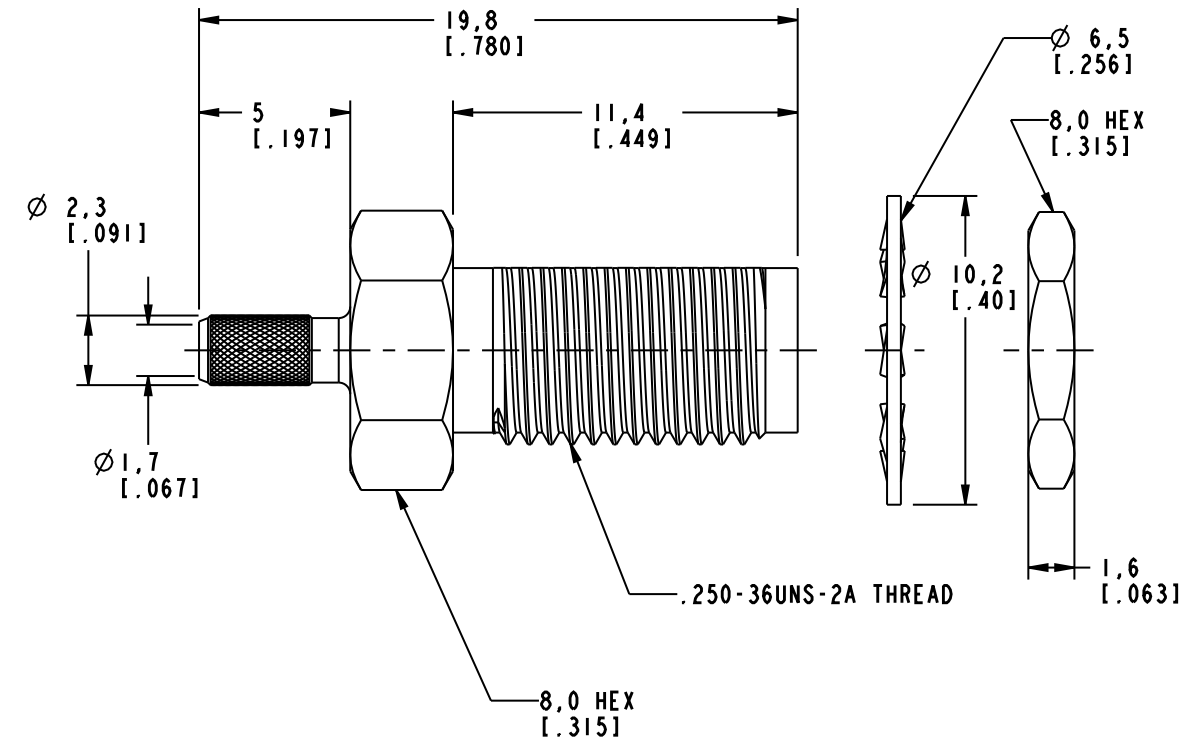
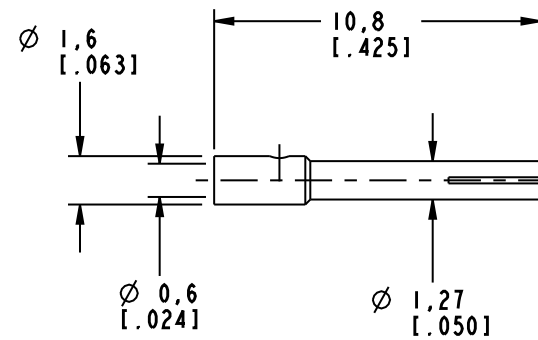
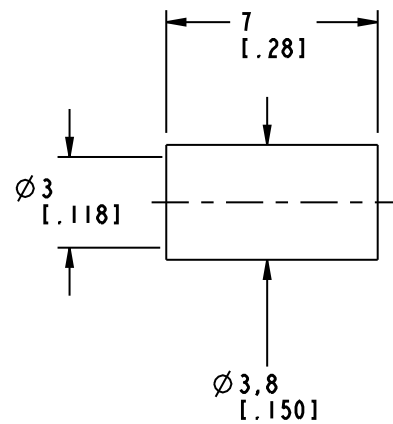
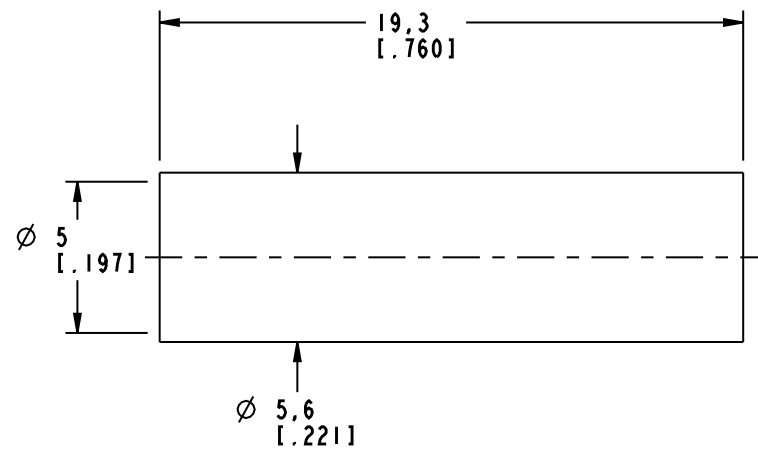
NOTES:

- MATERIALS OF CONSTRUCTION:
 BODY & HEX NUT = BRASS (ASTM-B16 H02, C36000), GOLD PLATED (.000003 MIN THICK)
 CONTACT PIN = BeCu (QQ-C-530), GOLD PLATED (.000050 MIN THICK)
 LOCKWASHER = BRASS (QQ-B-613), GOLD PLATED (.000003 MIN THICK)
 FERRULE = COPPER, GOLD PLATED (.000003 MIN THICK)
 INSULATOR = PTFE, ASTM D 1710 OR EQUIV.
 HEAT SHRINK TUBING = COLOR BLACK

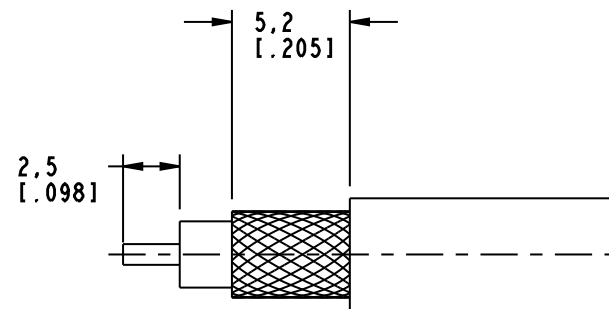
901-9875		REVISIONS			
DRAWING NO.	REV	DESCRIPTION	DATE	ECO	APPR
THIRD ANGLE PROJ.	A	RELEASE TO MFG.	4/7/95	40352	PB/RV
	C	SEE SHEET 1	10/2/02	44222	CPM



SCALE 1.500



RECOMMENDED MOUNTING HOLE DIMENSIONS
SCALE 5.000



RECOMMENDED CABLE STRIPPING DIMENSIONS
SCALE 3.000

CUSTOMER OUTLINE DRAWING

ALL OTHER SHEETS ARE FOR INTERNAL USE ONLY

UNLESS OTHERWISE SPECIFIED, DIMENSIONS ARE IN MM (INCHES) AND TOLERANCES ARE:
 0.5 - 6mm ±0.2mm
 6 - 30mm ±0.4mm
 30 - 120mm ±0.6mm

NOTICE - These drawings, specifications, or other data (1) are, and remain the property of Amphenol Corp. (2) must be returned upon request; and (3) are confidential and not to be disclosed to any person other than those to whom they are given by Amphenol Corp. The furnishing of these drawings, specifications, or other data by Amphenol Corp., or to any other person to anyone for any purpose is not to be regarded by implication or otherwise in any manner licensing, granting rights or permitting such holder or any other person to manufacture, use or sell any product, process or design, patented or otherwise, that may in any way be related to or disclosed by said drawings, specifications, or other data.

MATERIAL	DRAWN	DATE	TITLE
REFERENCE	C. McGRATH	10/1/02	SMA BULKHEAD CRIMP JACK (FOR RG-174/U, 188A/U, 316/U CABLES)
GEN# 901-10039-RFX_ASSY	ENGINEER	DATE	Amphenol Amphenol Corporation Communication and Network Products Division Danbury, CT U.S.A. 06810
EAR 966280-3 & 111-964413	O. BARTHELME	10/1/02	SCALE: 4.0:1 SHEET 2 OF 2
	APPROVED	DATE	
	O. BARTHELME	10/2/02	
	CAD FILE	CODE ID	DWG SIZE
	I:\SMA\901-9875	74868	B

DRAWING NO.	REV	DESCRIPTION	DATE	ECO	APPR
901-9875	A	RELEASE TO MFG.	10/2/02	44222	CPM
THIRD ANGLE PROJ.	C	SEE SHEET 1			

DRAWING NO.	REV	DESCRIPTION	DATE	ECO	APPR
901-9875	A	RELEASE TO MFG.	10/2/02	44222	CPM
THIRD ANGLE PROJ.	C	SEE SHEET 1			

Mouser Electronics

Authorized Distributor

Click to View Pricing, Inventory, Delivery & Lifecycle Information:

[Amphenol:](#)

[901-9875](#)