

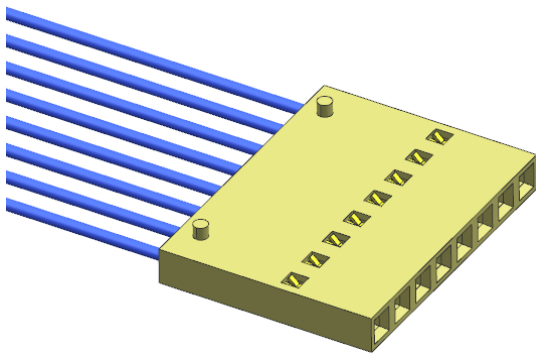
C-Grid III Interconnects

1.0 SCOPE

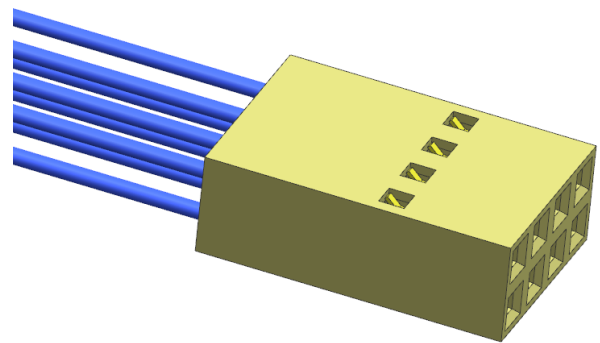
This document contains information pertaining to application requirements of the C Grid III Interconnects.

2.0 PRODUCT DESCRIPTION

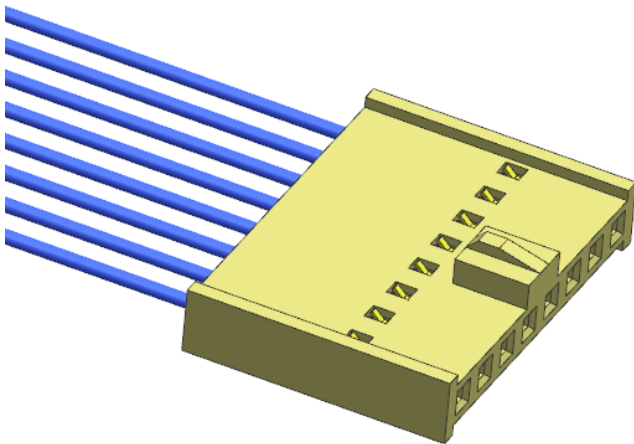
SINGLE ROW RECEPTACLE (WTB)



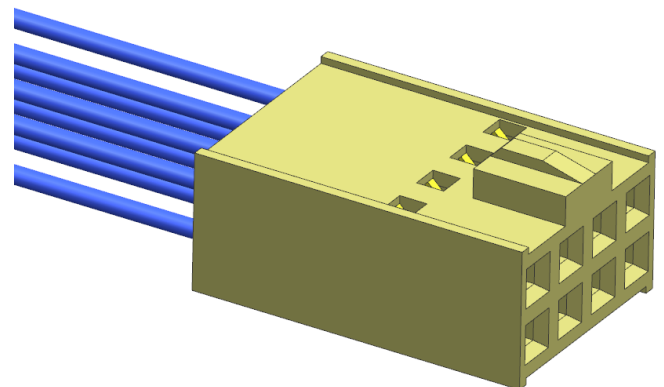
DUAL ROW RECEPTACLE (WTB)



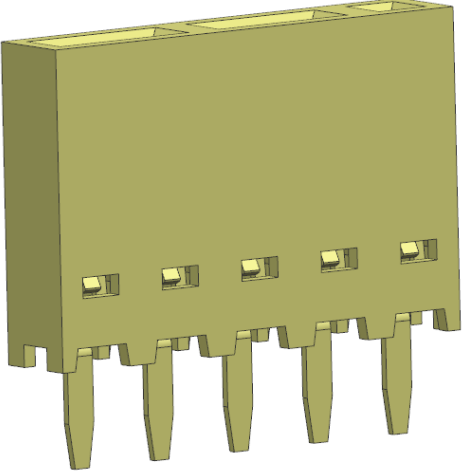
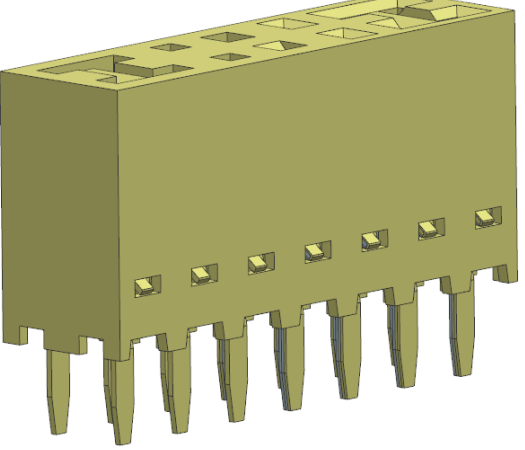
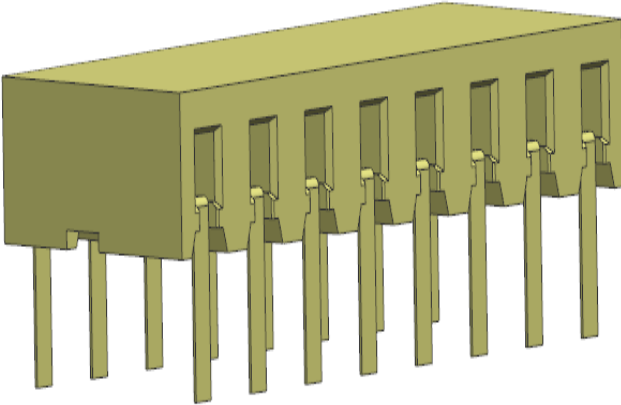
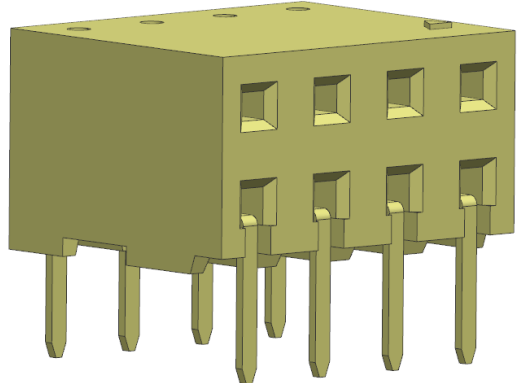
SINGLE ROW RECEPTACLE (WTB)



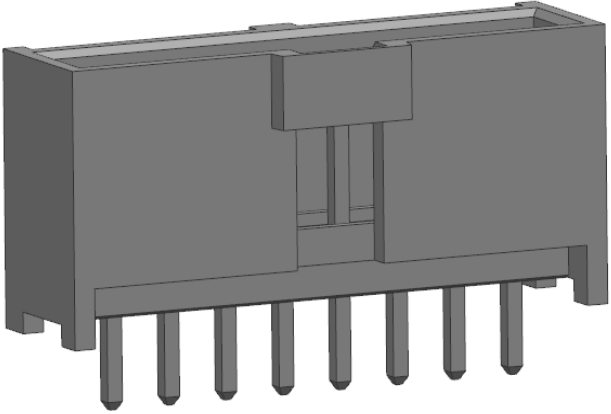
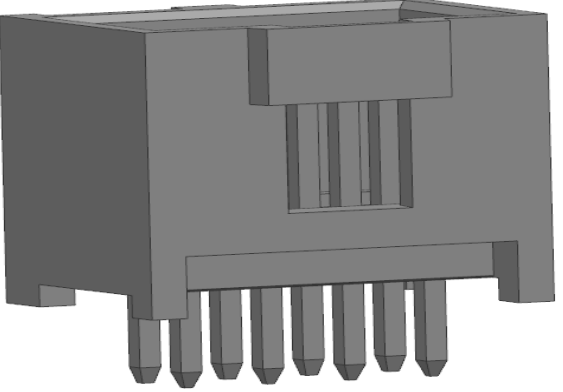
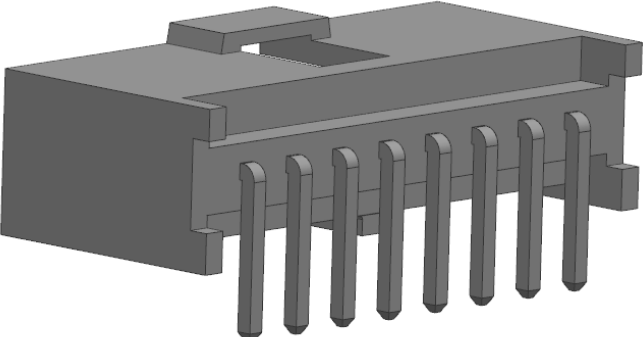
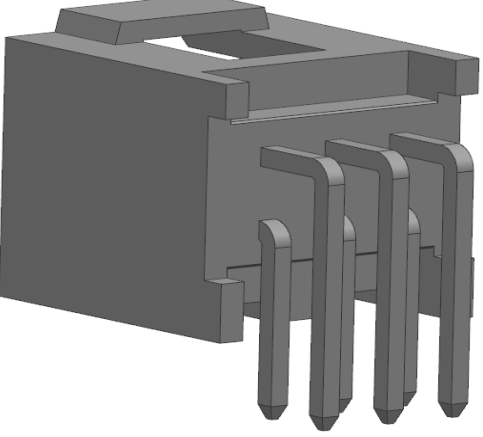
DUAL ROW RECEPTACLE (WTB)



REVISION: 1	ECR/ECN INFORMATION: EC No: DATE: 2019 / 12 / 23	TITLE: APPLICATION SPECIFICATION FOR C GRIDIII CONNECTOR SYSTEM	SHEET No. 1 of 15
DOCUMENT NUMBER: 901190001-AS	CREATED / REVISED BY: Akhil	CHECKED BY: Manohar	APPROVED BY: Manohar

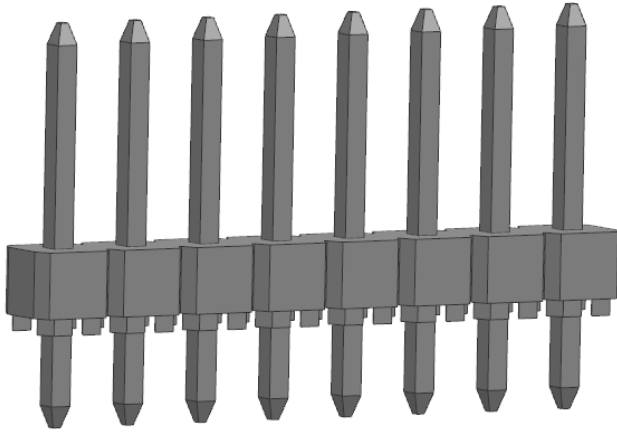
SINGLE ROW VERTICAL RECEPTACLE (BTB)	DUAL ROW VERTICAL RECEPTACLE (BTB)
	
SINGLE ROW RIGHTANGLE RECEPTACLE (BTB)	DUAL ROW RIGHTANGLE RECEPTACLE (BTB)
	

REVISION: 1	ECR/ECN INFORMATION: EC No: DATE: 2019 / 12 / 23	TITLE: APPLICATION SPECIFICATION FOR C GRIDIII CONNECTOR SYSTEM	SHEET No. 2 of 15
DOCUMENT NUMBER: 901190001-AS	CREATED / REVISED BY: Akhil	CHECKED BY: Manohar	APPROVED BY: Manohar

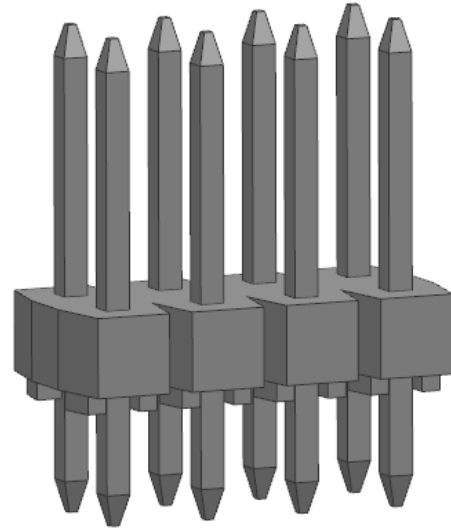
SINGLE ROW SHROUDED VERTICAL HEADER	DUAL ROW SHROUDED VERTICAL HEADER
	
SINGLE ROW SHROUDED RIGHT ANGLE HEADER	DUAL ROW SHROUDED RIGHT ANGLE HEADER
	

REVISION: 1	ECR/ECN INFORMATION: EC No: DATE: 2019 / 12 / 23	TITLE: APPLICATION SPECIFICATION FOR C GRIDIII CONNECTOR SYSTEM	SHEET No. 3 of 15
DOCUMENT NUMBER: 901190001-AS	CREATED / REVISED BY: Akhil	CHECKED BY: Manohar	APPROVED BY: Manohar

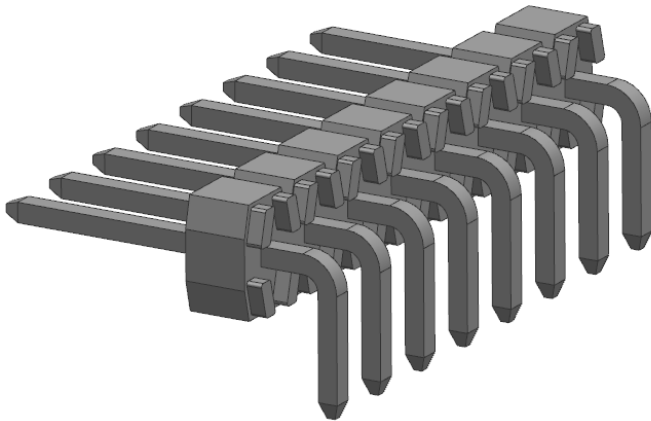
SINGLE ROW UNSHROUDED VERTICAL HEADER



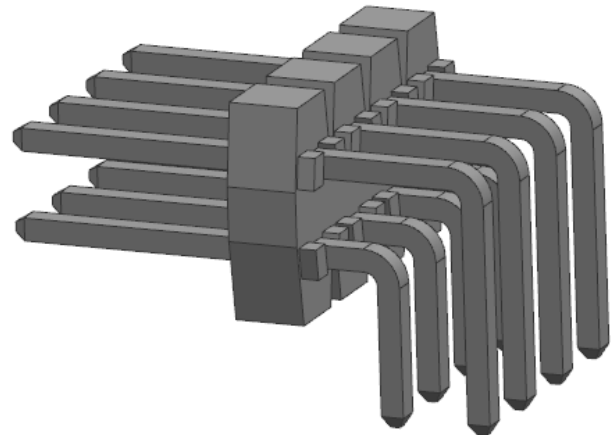
DUAL ROW UNSHROUDED VERTICAL HEADER



SINGLE ROW UNSHROUDED RIGHT ANGLE HEADER



DUAL ROW UNSHROUDED RIGHT ANGLE HEADER



REVISION: 1	ECR/ECN INFORMATION: EC No: DATE: 2019 / 12 / 23	TITLE: APPLICATION SPECIFICATION FOR C GRIDIII CONNECTOR SYSTEM	SHEET No. 4 of 15
DOCUMENT NUMBER: 901190001-AS	CREATED / REVISED BY: Akhil	CHECKED BY: Manohar	APPROVED BY: Manohar

SEE APPROPRIATE SALES DRAWINGS AND PRODUCT SPECIFICATION FOR INFORMATION ON SPECIFIC PART NUMBERS.

3.0 GENERAL NOTES

Appearance: Parts confirm to class “B” requirements of the cosmetic specification PS-45499-002. Refer notes in sales drawing.

1. ASSEMBLY INSTRUCTIONS

Wire to Board

Contact/terminal insertion into Receptacle housing

Use only *female* terminals with receptacle housing. Align the terminal to the receptacle housing cavity axis. Continue inserting until it stops and locks up. Orientation needed to insert terminal in housing as shown in the fig 1. Terminal will lock's up as shown in the **Detail A** view. Pull the terminal back gently to ensure terminal is seated properly.

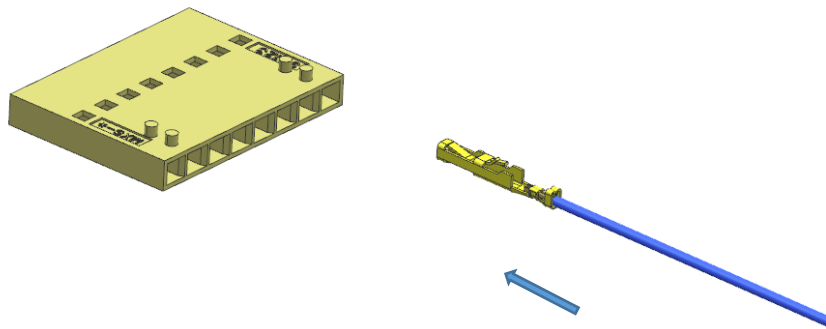


Fig-1

REVISION: 1	ECR/ECN INFORMATION: EC No: DATE: 2019 / 12 / 23	TITLE: APPLICATION SPECIFICATION FOR C GRIDIII CONNECTOR SYSTEM	SHEET No. 5 of 15
DOCUMENT NUMBER: 901190001-AS	CREATED / REVISED BY: Akhil	CHECKED BY: Manohar	APPROVED BY: Manohar

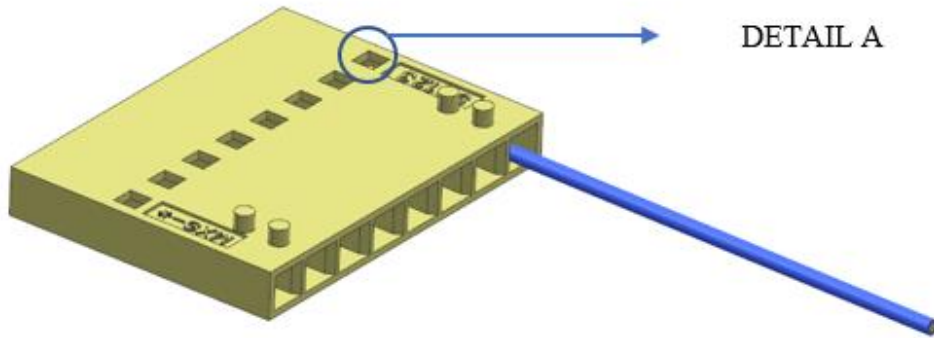


Fig-2



DETAIL A

<u>REVISION:</u> 1	<u>ECR/ECN INFORMATION:</u> <u>EC No:</u> <u>DATE:</u> 2019 / 12 / 23	<u>TITLE:</u> APPLICATION SPECIFICATION FOR C GRIDIII CONNECTOR SYSTEM	<u>SHEET No.</u> 6 of 15
<u>DOCUMENT NUMBER:</u> 901190001-AS	<u>CREATED / REVISED BY:</u> Akhil	<u>CHECKED BY:</u> Manohar	<u>APPROVED BY:</u> Manohar

Insert the terminals into all circuits and complete the insertion as shown in in Fig 3 and Carry out the visual inspection of the terminal

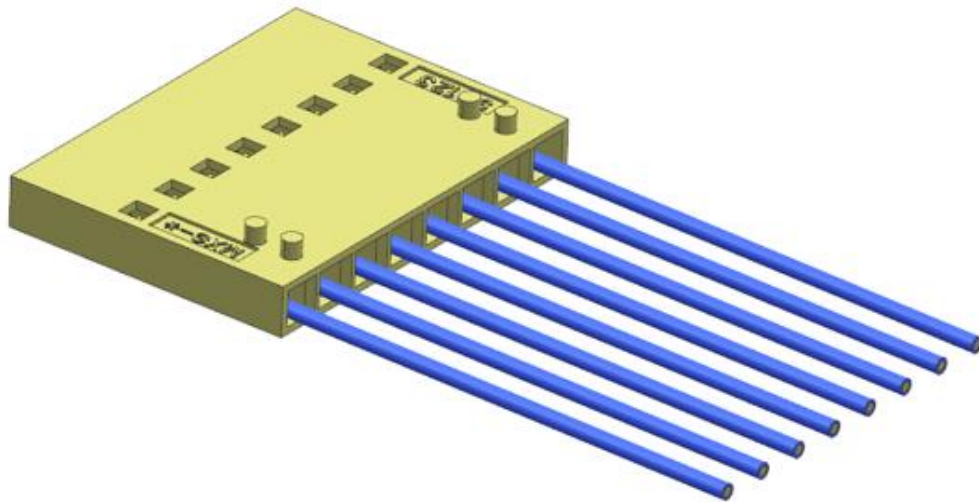


Fig-3

No Servicing Tool available for terminal extraction.

NOTE: Terminal insertion into receptacle housing of dual row also same as single row housing.

<u>REVISION:</u> 1	<u>ECR/ECN INFORMATION:</u> EC No: DATE: 2019 / 12 / 23	<u>TITLE:</u> APPLICATION SPECIFICATION FOR C GRIDIII CONNECTOR SYSTEM	<u>SHEET No.</u> 7 of 15
<u>DOCUMENT NUMBER:</u> 901190001-AS	<u>CREATED / REVISED BY:</u> Akhil	<u>CHECKED BY:</u> Manohar	<u>APPROVED BY:</u> Manohar

Contact/terminal insertion into Receptacle housing

Use only *female* terminals with receptacle housing. Align the terminal to the receptacle housing cavity axis. Continue inserting until it stops and locks up. Orientation needed to insert terminal in housing as shown in the fig 1. Terminal will lock's up as shown in the **Detail A** view. Pull the terminal back gently to ensure terminal is seated properly.

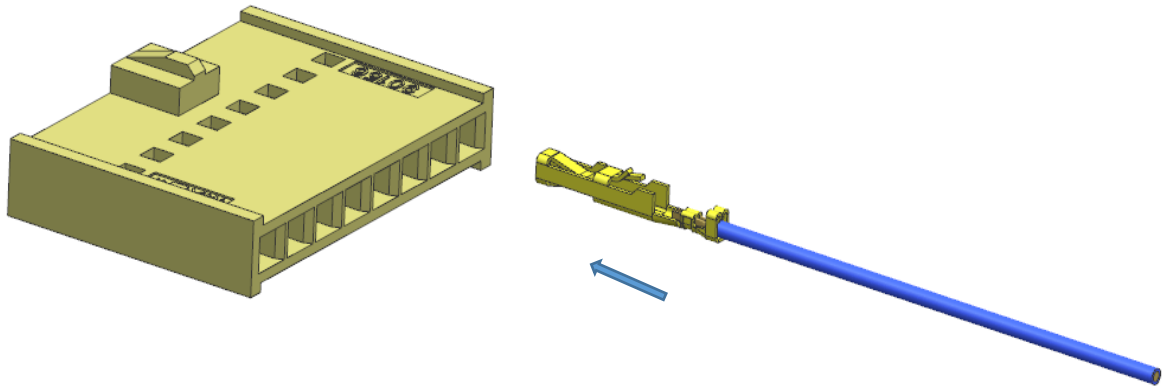


Fig-1

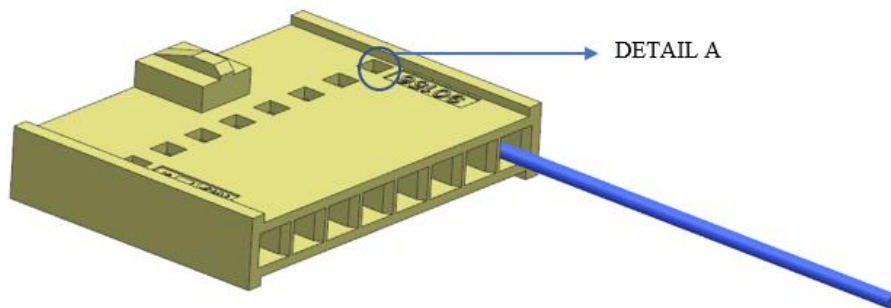


Fig-2

REVISION: 1	ECR/ECN INFORMATION: EC No: DATE: 2019 / 12 / 23	TITLE: APPLICATION SPECIFICATION FOR C GRIDIII CONNECTOR SYSTEM	SHEET No. 8 of 15
DOCUMENT NUMBER: 901190001-AS	CREATED / REVISED BY: Akhil	CHECKED BY: Manohar	APPROVED BY: Manohar



DETAIL A

Insert the terminals into all circuits and complete the insertion as shown in in Fig 3 and Carry out the visual inspection of the terminal

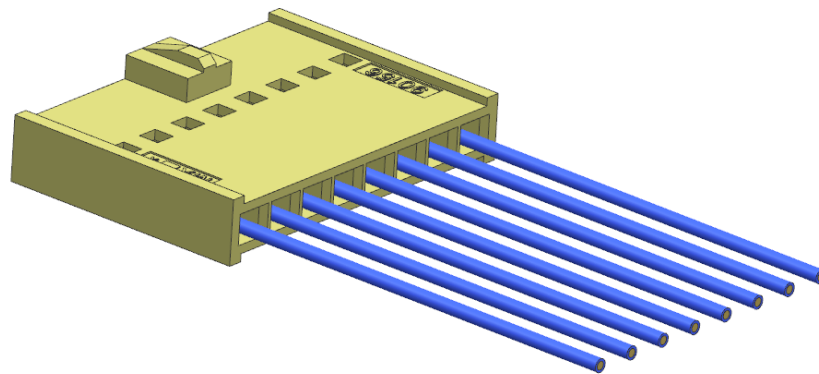


Fig-3

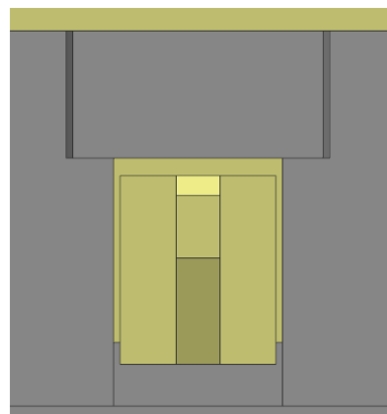
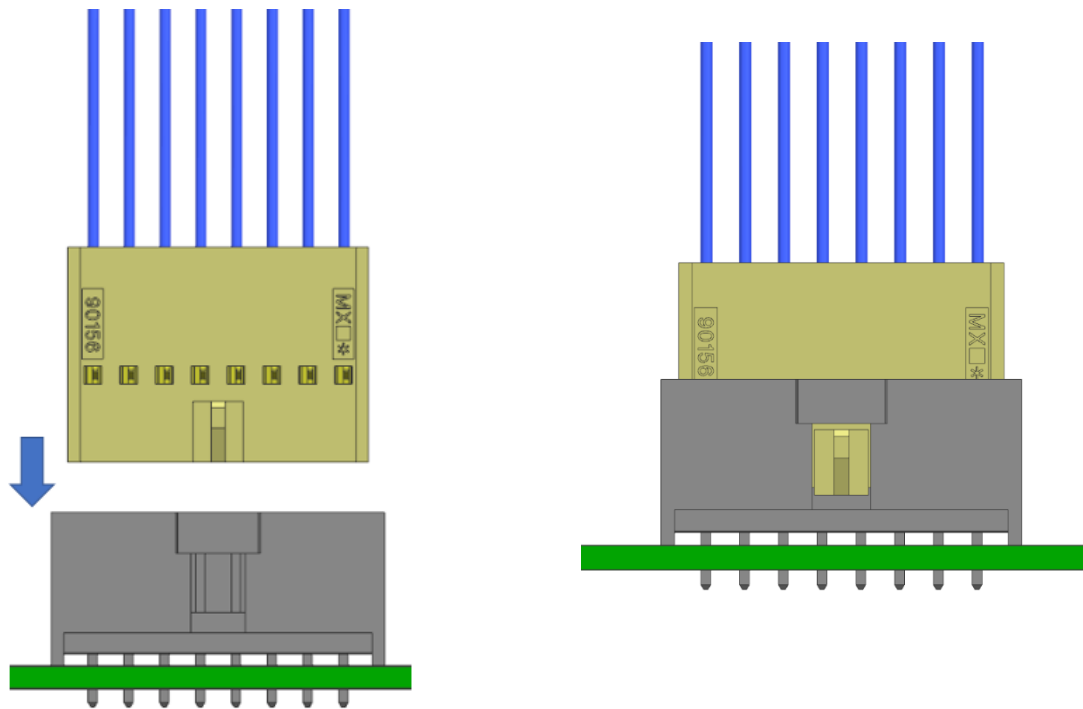
No Servicing Tool available for terminal extraction.

NOTE: Terminal insertion into receptacle housing of dual row also same as single row housing

REVISION: 1	ECR/ECN INFORMATION: EC No: DATE: 2019 / 12 / 23	TITLE: APPLICATION SPECIFICATION FOR C GRIDIII CONNECTOR SYSTEM	SHEET No. 9 of 15
DOCUMENT NUMBER: 901190001-AS	CREATED / REVISED BY: Akhil	CHECKED BY: Manohar	APPROVED BY: Manohar

Connector mating (Shrouded Header)

Align the receptacle to the header by arranging the polarization mechanism in axis and slide the connector assemblies into each other until the bottom and they lock as shown in Detail A.

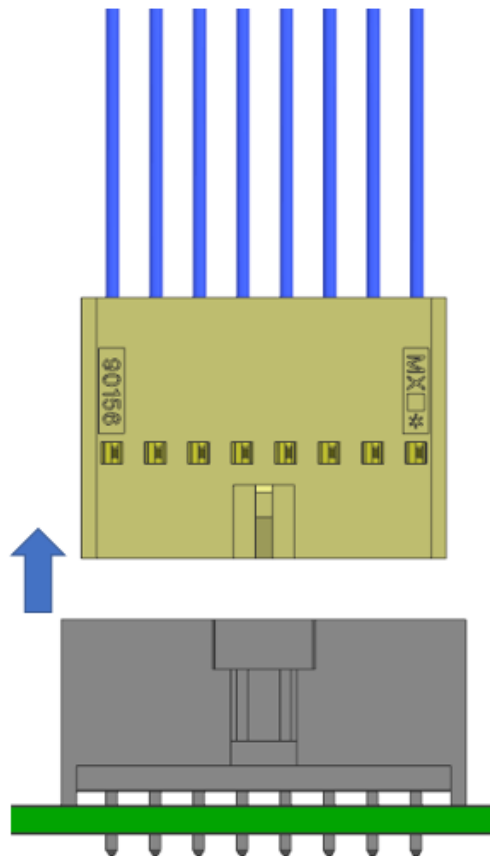


DETAIL A

REVISION: 1	ECR/ECN INFORMATION: EC No: DATE: 2019 / 12 / 23	TITLE: APPLICATION SPECIFICATION FOR C GRIDIII CONNECTOR SYSTEM	SHEET No. 10 of 15
DOCUMENT NUMBER: 901190001-AS	CREATED / REVISED BY: Akhil	CHECKED BY: Manohar	APPROVED BY: Manohar

Connector unmating

To unmate the connectors, just pull back each other until they separate from each other.

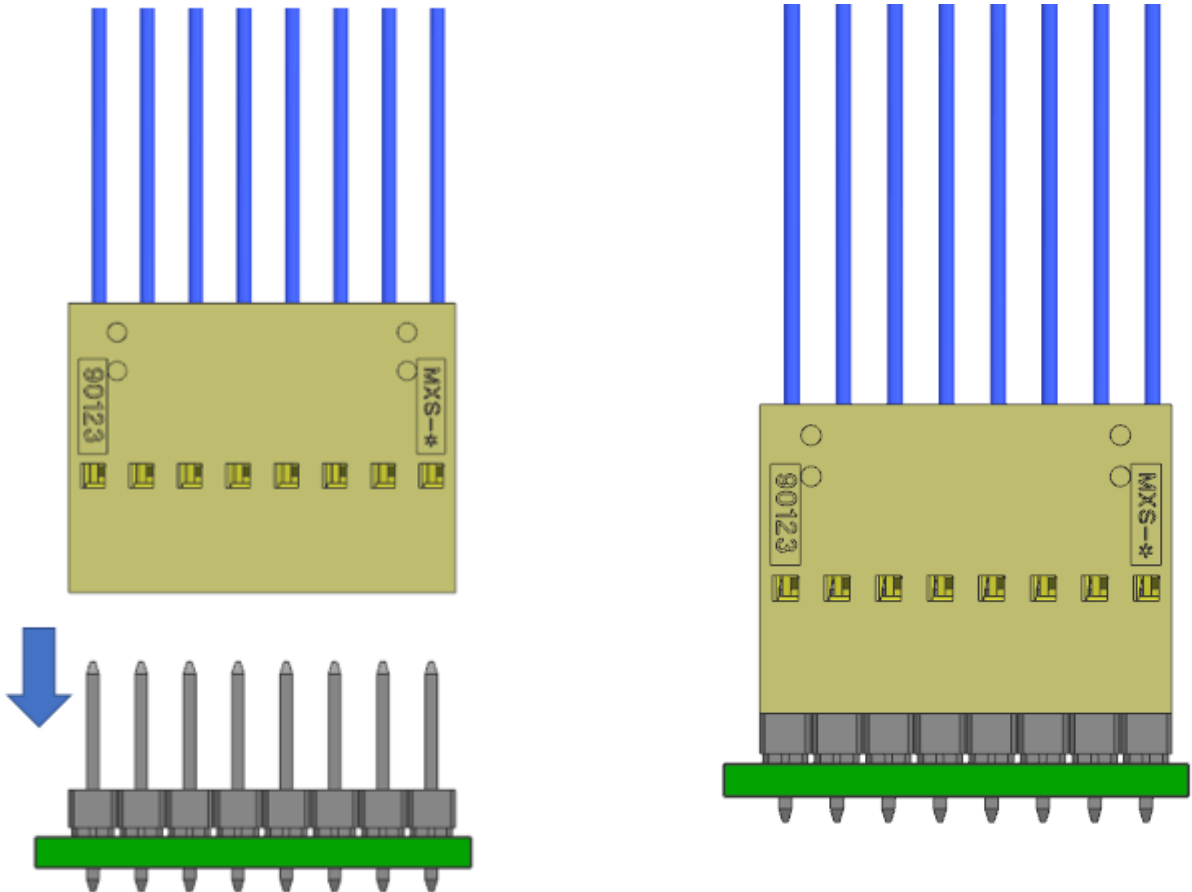


NOTE: Mating and unmating of the above combination remains same for dual row as well irrespective of their termination style.

REVISION: 1	ECR/ECN INFORMATION: EC No: DATE: 2019 / 12 / 23	TITLE: APPLICATION SPECIFICATION FOR C GRIDIII CONNECTOR SYSTEM	SHEET No. 11 of 15
DOCUMENT NUMBER: 901190001-AS	CREATED / REVISED BY: Akhil	CHECKED BY: Manohar	APPROVED BY: Manohar

Connector mating (Unshrouded Header)

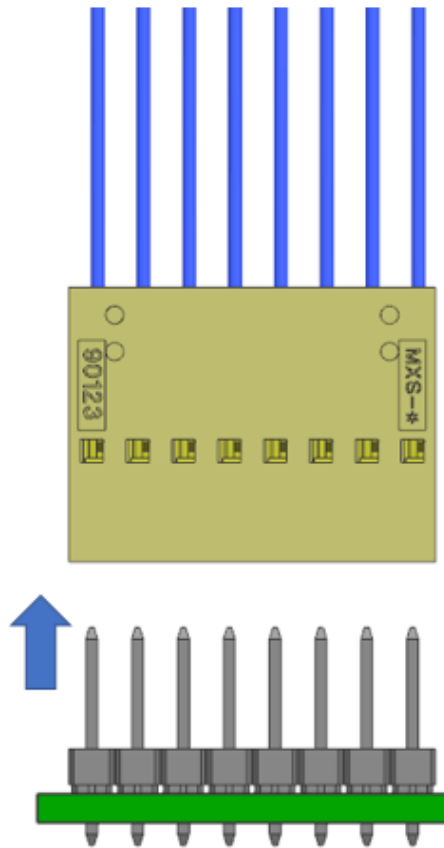
Align the receptacle to the header axis and move the receptacle until the bottom stops.



REVISION: 1	ECR/ECN INFORMATION: EC No: DATE: 2019 / 12 / 23	TITLE: APPLICATION SPECIFICATION FOR C GRIDIII CONNECTOR SYSTEM	SHEET No. 12 of 15
DOCUMENT NUMBER: 901190001-AS	CREATED / REVISED BY: Akhil	CHECKED BY: Manohar	APPROVED BY: Manohar

Connector unmating

To unmate the connectors, gently pull back each other until they separate from each other



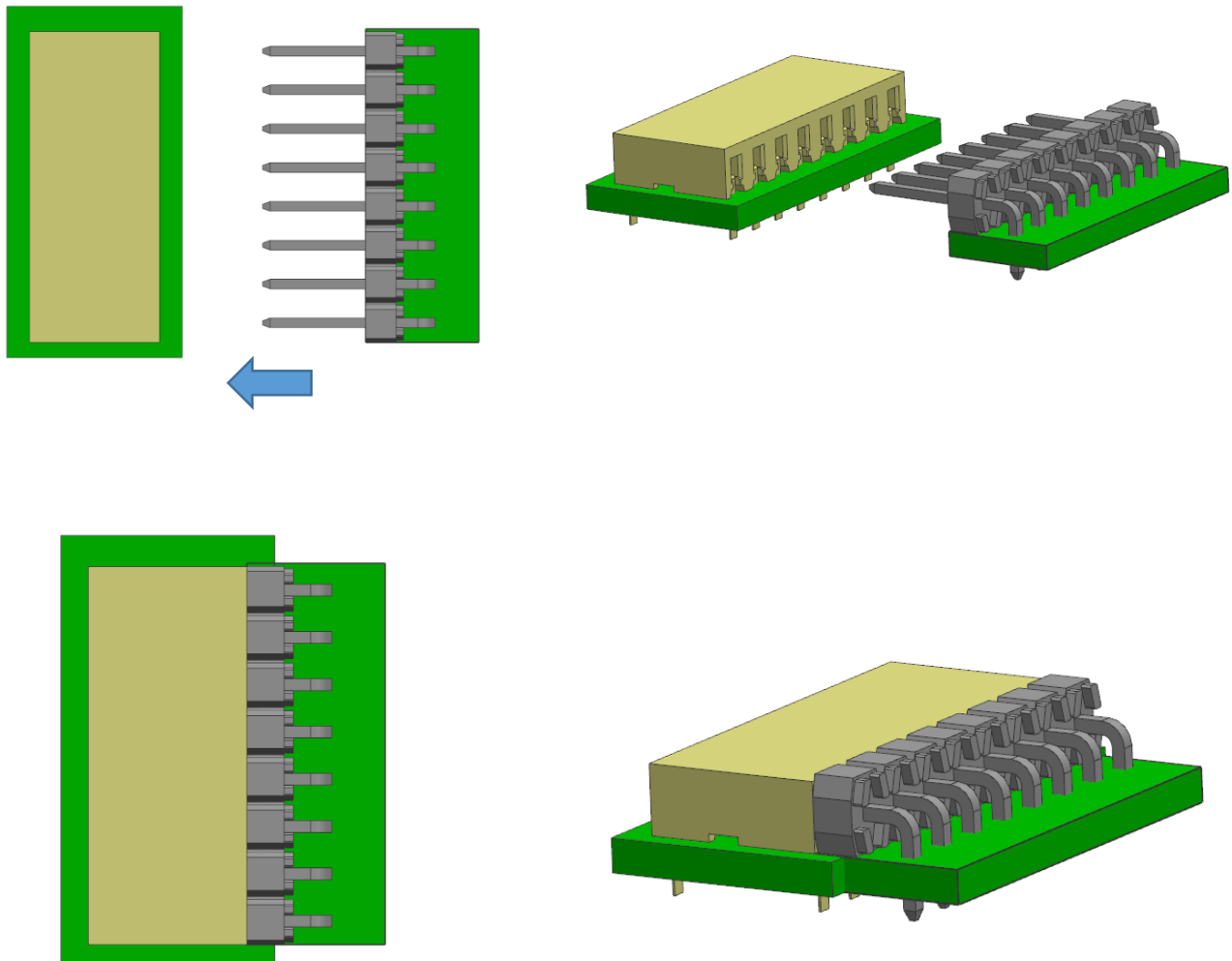
NOTE: Mating and unmating of the above combination remains same for dual row as well irrespective of their termination style

REVISION: 1	ECR/ECN INFORMATION: EC No: DATE: 2019 / 12 / 23	TITLE: APPLICATION SPECIFICATION FOR C GRIDIII CONNECTOR SYSTEM	SHEET No. 13 of 15
DOCUMENT NUMBER: 901190001-AS	CREATED / REVISED BY: Akhil	CHECKED BY: Manohar	APPROVED BY: Manohar

Board to Board

Connector mating (Unshrouded header)

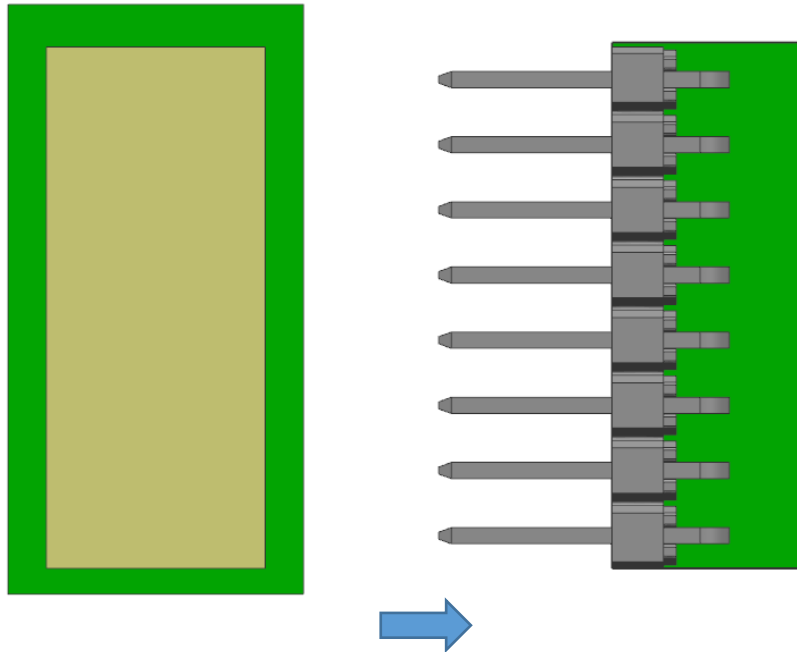
Align the receptacle to the side axis of the header and slide the connector assemblies into each other until it bottoms and stops



REVISION: 1	ECR/ECN INFORMATION: EC No: DATE: 2019 / 12 / 23	TITLE: APPLICATION SPECIFICATION FOR C GRIDIII CONNECTOR SYSTEM	SHEET No. 14 of 15
DOCUMENT NUMBER: 901190001-AS	CREATED / REVISED BY: Akhil	CHECKED BY: Manohar	APPROVED BY: Manohar

Connector unmating

To unmate the connectors, gently pull back each other until they separate from each other.



NOTE: Mating and unmating of the above combination remains same for dual row as well irrespective of their termination style.

REVISION: 1	ECR/ECN INFORMATION: EC No: DATE: 2019 / 12 / 23	TITLE: APPLICATION SPECIFICATION FOR C GRIDIII CONNECTOR SYSTEM	SHEET No. 15 of 15
DOCUMENT NUMBER: 901190001-AS	CREATED / REVISED BY: Akhil	CHECKED BY: Manohar	APPROVED BY: Manohar