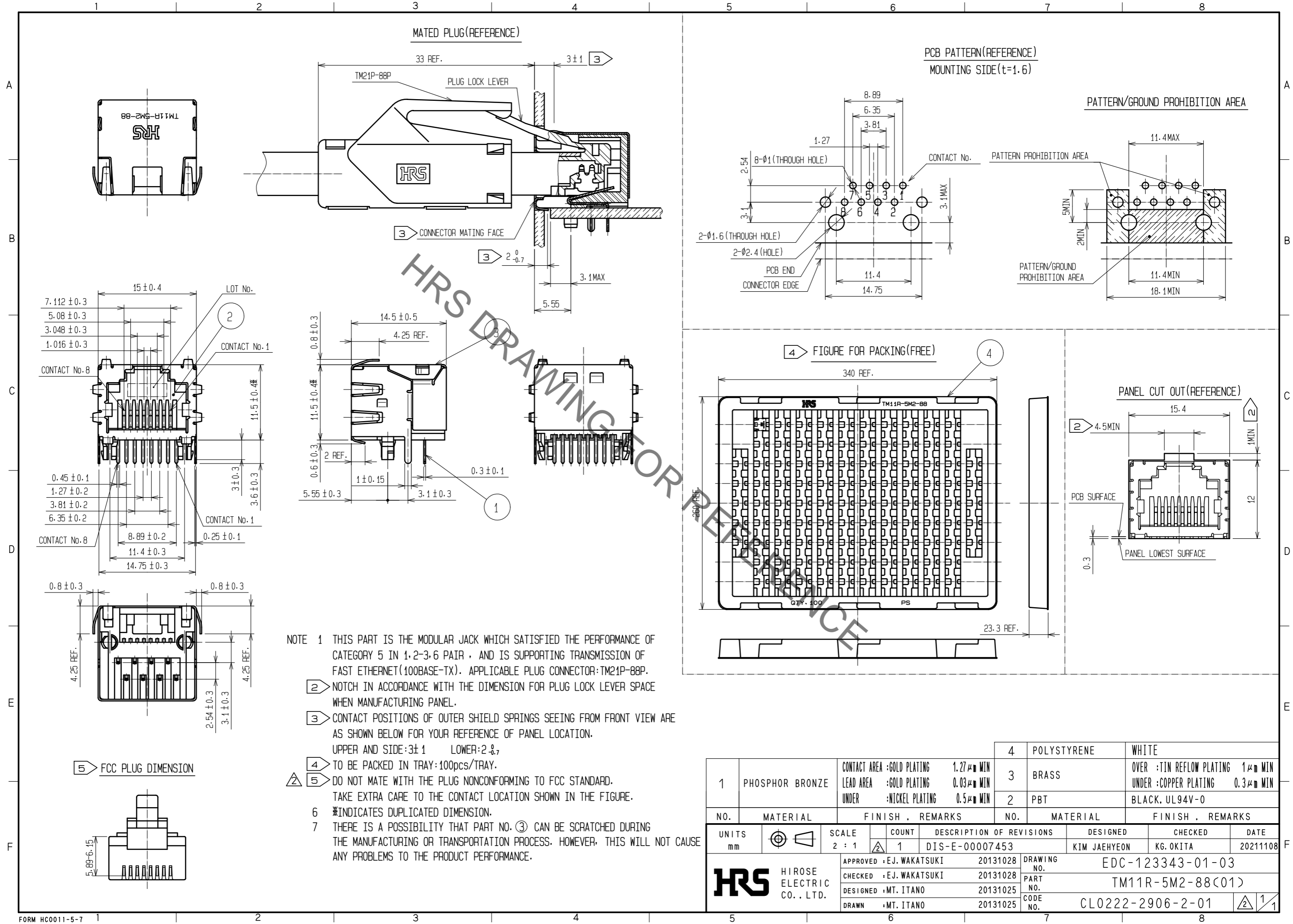


Jan.1.2022 Copyright 2022 HIROSE ELECTRIC CO., LTD. All Rights Reserved.
 In case of consideration for using Automotive equipment / device which demand high reliability, kindly contact our sales window correspondents.



NOTE 1 THIS PART IS THE MODULAR JACK WHICH SATISFIED THE PERFORMANCE OF CATEGORY 5 IN 1,2-3,6 PAIR , AND IS SUPPORTING TRANSMISSION OF FAST ETHERNET(100BASE-TX). APPLICABLE PLUG CONNECTOR:TM21P-88P.

② NOTCH IN ACCORDANCE WITH THE DIMENSION FOR PLUG LOCK LEVER SPACE WHEN MANUFACTURING PANEL.

③ CONTACT POSITIONS OF OUTER SHIELD SPRINGS SEEING FROM FRONT VIEW ARE AS SHOWN BELOW FOR YOUR REFERENCE OF PANEL LOCATION.
 UPPER AND SIDE:3±1 LOWER:2±0.7

④ TO BE PACKED IN TRAY:100PCS/TRAY.

⑤ DO NOT MATE WITH THE PLUG NONCONFORMING TO FCC STANDARD.
 TAKE EXTRA CARE TO THE CONTACT LOCATION SHOWN IN THE FIGURE.

6 *INDICATES DUPLICATED DIMENSION.

7 THERE IS A POSSIBILITY THAT PART NO. ③ CAN BE SCRATCHED DURING THE MANUFACTURING OR TRANSPORTATION PROCESS. HOWEVER, THIS WILL NOT CAUSE ANY PROBLEMS TO THE PRODUCT PERFORMANCE.

1	PHOSPHOR BRONZE	CONTACT AREA :GOLD PLATING LEAD AREA :GOLD PLATING UNDER :NICKEL PLATING	1.27µm MIN 0.03µm MIN 0.5µm MIN	4	POLYSTYRENE	WHITE			
3	BRASS			3	BRASS	OVER :TIN REFLOW PLATING 1µm MIN UNDER :COPPER PLATING 0.3µm MIN			
2	PBT			2	PBT	BLACK, UL94V-0			
NO.	MATERIAL	FINISH .	REMARKS	NO.	MATERIAL	FINISH .	REMARKS		
UNITS	mm	SCALE	2 : 1	COUNT	1	DESCRIPTION OF REVISIONS	DESIGNED	CHECKED	DATE
						DIS-E-00007453	KIM JAEHYEON	KG. OKITA	20211108
APPROVED :EJ. WAKATSUKI		20131028		DRAWING NO.		EDC-123343-01-03			
CHECKED :EJ. WAKATSUKI		20131028		PART NO.		TM11R-5M2-88(01)			
DESIGNED :MT. ITANO		20131025		CODE NO.		CL0222-2906-2-01			
DRAWN :MT. ITANO		20131025							

Mouser Electronics

Authorized Distributor

Click to View Pricing, Inventory, Delivery & Lifecycle Information:

[Hirose Electric:](#)

[TM11R-5M2-88\(01\)](#)