

Features

- 2:1 and 4:1 Wide input voltage range
- SIP8 Package style
- UL94V-0 Package material

Regulated Converters

- Continuous short circuit protected
- Low noise
- 1kVDC, 2kVDC or 3kVDC Isolation



RSO-S(D)(Z)

1 Watt
SIP8
Single & Dual
Output



UL60950-1 certified
 CAN/CSA No. 60950-1-07 certified
 IEC/EN60950-1 certified
 IEC/EN60601-1 certified
 CB Report

Description

High-power-density, an industrial temperature range of -40°C to +100°C and extra features like On-Off-control are just some of the characteristics of this converter, ideal for highly sophisticated industrial-designs. The RSO series is available with isolation of 2kV or 3kV by choosing option „/H2“ or „/H3“. The standard version offers 2:1 input voltage range, while the “Z” version features 4:1 input voltage range, which includes an input voltage range covering both 5V and 12V supplies.

Selection Guide

| Part Number | Input Voltage Range [VDC] | Output Voltage [VDC] | Output Current [mA] | Efficiency typ. [%] | max. Capacitive Load ⁽³⁾ [µF] |
|-------------|---|----------------------|---------------------|---------------------|--|
| RSO-xx3.3S | 4.5-9 ⁽¹⁾ , 9-18, 18-36, 36-72 | 3.3 | 300 | 68-72 | 3300 |
| RSO-xx3.3SZ | 9-36, 18-72 | | | | |
| RSO-xx05S | 4.5-9 ⁽¹⁾ , 9-18, 18-36, 36-72 | 5 | 200 | 73-78 | 1200 |
| RSO-xx05SZ | 4.5-18 ^(1,2) , 9-36, 18-72 | | | | |
| RSO-xx09S | 4.5-9 ⁽¹⁾ , 9-18, 18-36, 36-72 | 9 | 111 | 74-81 | 680 |
| RSO-xx09SZ | 4.5-18 ^(1,2) , 9-36, 18-72 | | | | |
| RSO-xx12S | 4.5-9 ⁽¹⁾ , 9-18, 18-36, 36-72 | 12 | 83 | 75-83 | 680 |
| RSO-xx12SZ | 4.5-18 ^(1,2) , 9-36, 18-72 | | | | |
| RSO-xx15S | 4.5-9 ⁽¹⁾ , 9-18, 18-36, 36-72 | 15 | 67 | 75-83 | 680 |
| RSO-xx15SZ | 4.5-18 ^(1,2) , 9-36, 18-72 | | | | |
| RSO-xx3.3D | 4.5-9 ⁽¹⁾ , 9-18, 18-36, 36-72 | ±3.3 | ±150 | 68-72 | ±1500 |
| RSO-xx3.3DZ | 9-36, 18-72 | | | | |
| RSO-xx05D | 4.5-9 ⁽¹⁾ , 9-18, 18-36, 36-72 | ±5 | ±100 | 73-76 | ±470 |
| RSO-xx05DZ | 4.5-18 ^(1,2) , 9-36, 18-72 | | | | |
| RSO-xx09D | 4.5-9 ⁽¹⁾ , 9-18, 18-36, 36-72 | ±9 | ±56 | 74-78 | ±470 |
| RSO-xx09DZ | 4.5-18 ^(1,2) , 9-36, 18-72 | | | | |
| RSO-xx12D | 4.5-9 ⁽¹⁾ , 9-18, 18-36, 36-72 | ±12 | ±42 | 75-80 | ±330 |
| RSO-xx12DZ | 4.5-18 ^(1,2) , 9-36, 18-72 | | | | |
| RSO-xx15D | 4.5-9 ⁽¹⁾ , 9-18, 18-36, 36-72 | ±15 | ±34 | 75-80 | ±330 |
| RSO-xx15DZ | 4.5-18 ^(1,2) , 9-36, 18-72 | | | | |

Notes:

- Note1: Derate to 75% if V_{IN} is <5VDC (refer to „Line Derating“ graph on page 2)
 Note2: 12V 4:1 input also requires an external 10µF capacitor (refer to „Protection Circuit“ on page 3)
 Note3: Maximum capacitive load is defined as the capacitive load that will allow start up in under 1 second without damage the converter

Model Numbering



Notes:

- Note4: add „Z“ for 4:1 Input Voltage (12= 4.5-18VDC; 24= 9-36VDC; 48= 18-72VDC)
 Note5: add suffix „/H2“ for 2kVDC isolation or „/H3“ for 3kVDC isolation, without = standard 1kVDC isolation

Ordering Examples:

| | | | | | |
|---------------|-----------|--------|--------|-------------------|-----------------|
| RSO-0512S: | 4.5-9Vin | 12Vout | Single | 2:1 Input Voltage | 1kVDC Isolation |
| RSO-0505DZ/H3 | 4.5-9Vin | ±5Vout | Dual | 4:1 Input Voltage | 3kVDC Isolation |
| RSO-1212SZ/H2 | 4.5-18Vin | 12Vout | Single | 4:1 Input Voltage | 2kVDC Isolation |

Specifications (measured @ Ta= 25°C, nom. Vin, full load and after warm-up unless otherwise stated)

BASIC CHARACTERISTICS

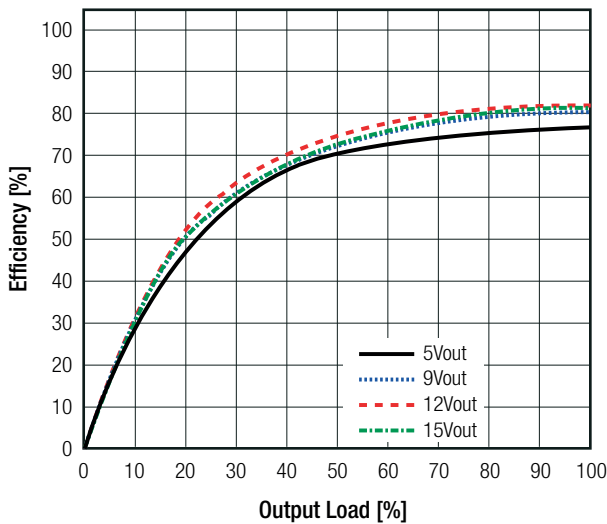
| Parameter | Condition | | Min. | Typ. | Max. |
|------------------------------|-----------|----------------|--|------|---------|
| Input Voltage Range | 2:1 Input | 5VDC | 4.5VDC ⁽¹⁾ | | 9VDC |
| | | nom Vin= 12VDC | 9VDC | | 18VDC |
| | 4:1 Input | 24VDC | 18VDC | | 36VDC |
| | | 48VDC | 36VDC | | 72VDC |
| Quiescent Current | nom Vin= | 12VDC | 4.5VDC ^(1,2) | 40mA | 18VDC |
| | | 24VDC | 9VDC | 32mA | 36VDC |
| | | 48VDC | 18VDC | 25mA | 72VDC |
| Minimum Load ⁽⁶⁾ | | | 10% | | |
| ON/OFF CTRL | DC-DC ON | | open or high impedance | | |
| | DC-DC OFF | | external V _{CTRL} = 5-12VDC + 1N4148 and 68Ω resistor | | |
| Input Current of CTRL Pin | DC-DC ON | | | 3mA | 6mA |
| Standby Current | DC-DC OFF | | | 10mA | |
| Internal Operating Frequency | 2:1 Input | | 200kHz | | 500kHz |
| | 4:1 Input | | 100kHz | | 800kHz |
| Output Ripple and Noise | | 20MHz BW | | | 50mVp-p |

Notes:

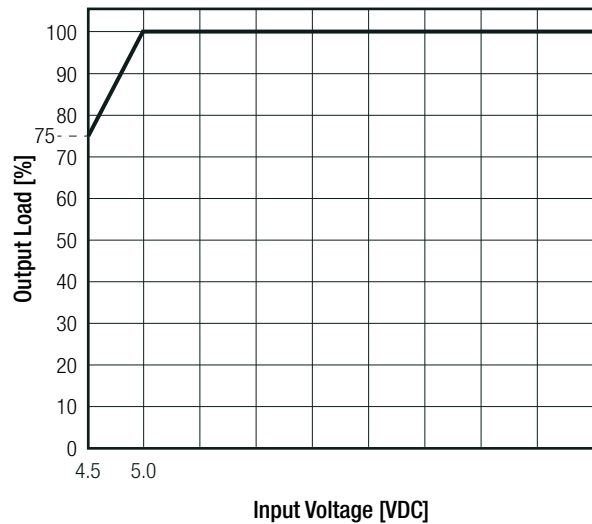
Note6: Operation below 10% load won't harm the converter, but specifications may not be met

Efficiency vs. Load

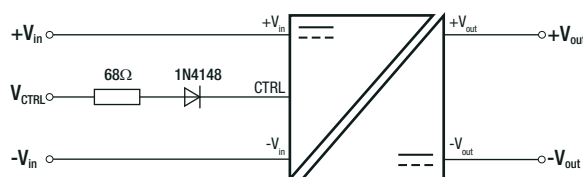
RSO-24xx



Line Derating



ON/OFF CTRL

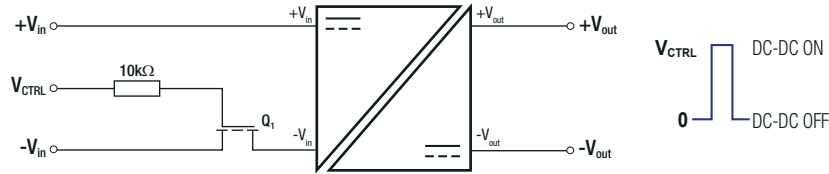


DC-DC ON: Open or high impedance

DC-DC OFF: V_{CTRL} = 5-12VDC + 1N4148 and 68Ω resistor

continued on next page

Specifications (measured @ Ta= 25°C, nom. Vin, full load and after warm-up unless otherwise stated)



REGULATIONS

| Parameter | Condition | | Value |
|-----------------|-----------------------|-----------|------------|
| Output Accuracy | | | ±2.0% typ. |
| Line Regulation | 2:1 Input | | ±0.2% max. |
| | 4:1 Input | | ±0.5% max. |
| Load Regulation | 10% to 100% full load | 2:1 Input | 0.4% max. |
| | | 4:1 Input | 0.5% typ. |

PROTECTIONS

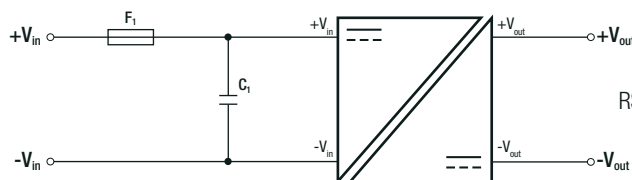
| Parameter | Type | | Value | |
|----------------------------------|-------------------------|---------------------|--|---|
| Short Circuit Protection (SCP) | below 100mΩ | | continuous, auto recovery | |
| Isolation Voltage ⁽⁷⁾ | standard without suffix | tested for 1 second | 1kVDC | |
| | | rated for 1 minute | 500VAC/60Hz | |
| | /H2 version | tested for 1 second | 2kVDC | |
| | | rated for 1 minute | 1kVAC/60Hz | |
| | /H3 version | tested for 1 second | 3kVDC | |
| | | rated for 1 minute | 1.5kVAC/60Hz | |
| Isolation Resistance | | | 1GΩ min. | |
| Isolation Capacitance | standard without suffix | 2:1 Input | Single Dual Single | 10pF min. / 40pF typ. / 60pF max. 120pF min. / 170pF typ. / 250pF max. 200pF max. |
| | | 2:1 Input | | |
| 4:1 Input | | | | |
| /H2 and /H3 version | 2:1 Input | Single/Dual | 5pF min. / 30pF typ. / 60pF max. 30pF max. | |
| | 4:1 Input | Single/Dual | | |
| Insulation Grade | | | basic (IEC/EN60950-1) functional (IEC/EN6060-1) | |

Notes:

Note7: For repeat Hi-Pot testing, reduce the time and/or the test voltage

Note8: Refer to local safety regulations if input over-current protection is also required. Recommended fuse: slow blow type

Protection Circuit



RSO-12xxSZ(DZ) requires a 10μF MLCC capacitor (C1) on input side

ENVIRONMENTAL

| Parameter | Condition | Value |
|-----------------------------|---|-----------------|
| Operating Temperature Range | with derating @ free air convection (see graph) | -40°C to +100°C |
| Operating Altitude | | 5000m |

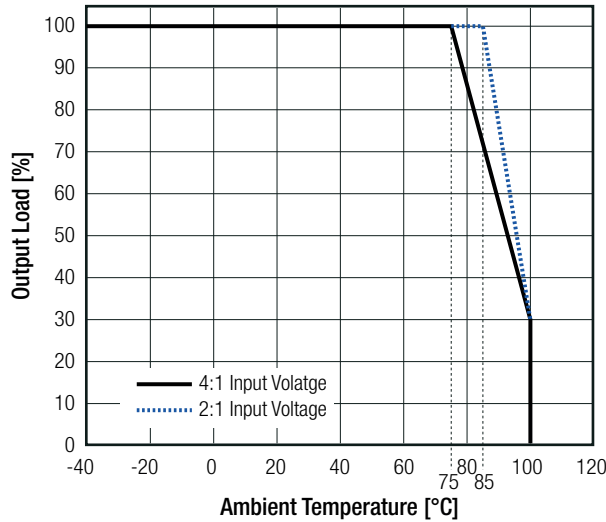
continued on next page

Specifications (measured @ Ta= 25°C, nom. Vin, full load and after warm-up unless otherwise stated)

| Parameter | Condition | | Value |
|--------------------|----------------------------------|-------|------------------------------|
| Operating Humidity | non-condensing | | 95% RH max. |
| Pollution Degree | | | PD2 |
| MTBF | according to MIL-HDBK-217F, G.B. | +25°C | 1685 x 10 ³ hours |
| | | +85°C | 254 x 10 ³ hours |

Derating Graph

(@ Chamber and free air convection)

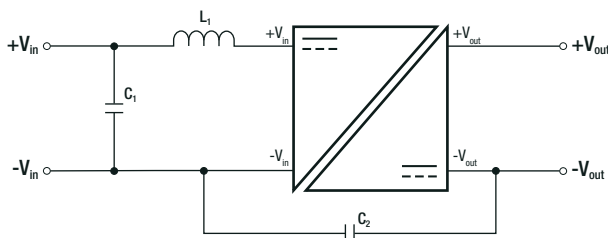


SAFETY AND CERTIFICATIONS

| Certificate Type (Safety) | Report / File Number | Standard |
|---|----------------------|---|
| Information Technology Equipment, General Requirements for Safety (LVD) | SPCLVD1605077-10 | IEC60950-1, 2nd Edition, AM2: 2013 EN60950-1, 2nd Edition, A2:2013 |
| Information Technology Equipment, General Requirements for Safety (CB) | L0339L48-CB-1-B1 | IEC60950-1:2005, 2nd Edition + A2:2013 |
| Information Technology Equipment, General Requirements for Safety | E224736-A34-UL | UL60950-1, 2nd Edition, 2014 CAN/CSA C22.2 No. 60950-1-07 |
| Medical Electric Equipment, General Requirements for Safety and Essential Performance | WD-SE-R-180675-A0 | IEC60601-1:2005 + C2:2007 + A1:2012, 3rd Edition EN60601-1:2006 + A1:2013 + A12:2014 |
| EAC | RU-AT.AB49.B.09571 | TP TC 004/2011 |
| RoHS2 | | RoHS 2011/65/EU + AM2015/863 |

| EMC Compliance | Condition | Standard / Criterion |
|--|---|--------------------------------------|
| Electromagnetic compatibility of multimedia equipment - Emission requirements ⁽⁹⁾ | with external filter (see filter suggestion below) | EN55032, Class A EN55032, Class B |

EMC Filtering Suggestions according to EN55032



Notes:

Note9: Filter suggestions are valid for indicated part numbers only.
For other part numbers, please contact RECOM tech support for advice.

Component List Class A

| Model | C1 | C2 | L1 |
|-----------|-------------------|-----|--|
| RSO-0505S | 10µF/100V MLCC | N/A | 3.9µH choke RLS-397 |
| RSO-1205S | | | |
| RSO-2405S | | | |
| RSO-4805S | | | |

Component List Class B

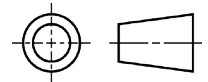
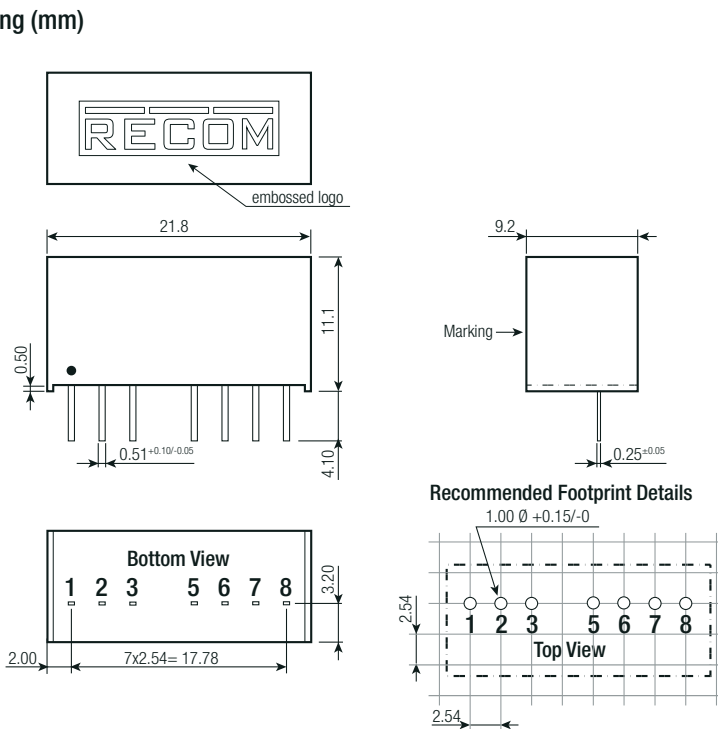
| Model | C1 | C2 | L1 |
|-----------|-------------------|-------|--|
| RSO-0505S | 10µF/100V MLCC | 2.2nF | 5.6µH choke RLS-567 |
| RSO-1205S | | | |
| RSO-2405S | | | |
| RSO-4805S | | | 12µH choke RLS-126 |

Specifications (measured @ Ta= 25°C, nom. Vin, full load and after warm-up unless otherwise stated)

DIMENSION AND PHYSICAL CHARACTERISTICS

| Parameter | Type | Value |
|-------------------|------------------------|--|
| Material | case potting PCB | non-conductive black plastic, (UL94 V-0) epoxy, (UL94 V-0) FR4, (UL94 V-0) |
| Dimension (LxWxH) | | 21.8 x 11.1 x 9.2mm |
| Weight | | 4.7g typ. |

Dimension Drawing (mm)



Pinning information

| Pin # | Single | Dual |
|-------|----------------------|----------------------|
| 1 | -Vin | -Vin |
| 2 | +Vin | +Vin |
| 3 | CTRL ⁽¹⁰⁾ | CTRL ⁽¹⁰⁾ |
| 5 | NC | NC |
| 6 | +Vout | +Vout |
| 7 | -Vout | COM |
| 8 | NC ⁽¹¹⁾ | -Vout |

NC= no connection
Tolerance: xx.x= ±0.5mm
xx.xx= ±0.25mm

Notes:

Note10: This pin provides an Off function which puts the converter into a low power mode. When the pin is 'high' the converter is OFF and when the pin is open the converter is ON. There is no allowed low state for this pin. (refer to „ON/OFF CTRL“ on page 2)

Note11: This pin is used internally. No external connection allowed

PACKAGING INFORMATION

| Parameter | Type | Value |
|-----------------------------|------|-----------------------|
| Packaging Dimension (LxWxH) | tube | 520.0 x 17.0 x 10.0mm |
| Packaging Quantity | tube | 22pcs |
| Storage Temperature Range | | -55°C to +125°C |
| Storage Humidity | | 95% RH max. |

The product information and specifications may be subject to changes even without prior written notice. The product has been designed for various applications; its suitability lies in the responsibility of each customer. The products are not authorized for use in safety-critical applications without RECOM's explicit written consent. A safety-critical application is an application where a failure may reasonably be expected to endanger or cause loss of life, inflict bodily harm or damage property. The applicant shall indemnify and hold harmless RECOM, its affiliated companies and its representatives against any damage claims in connection with the unauthorized use of RECOM products in such safety-critical applications.