

3

4

1 | 2

PRODUCT NO.	ROWS	POWER												SIGNAL						
51939-486 -- NOTE 3	D	P1	P2	P3	P4	P5	P6	P7	P8	P9	P10	P11	P12	1	2	3	4	5	6	E2
	C	PA	PA	PA	PA	PA	PA	PA	PA	PA	PA	PA	PA	UUUUHH	TTTTGG	SSSSFF	RRRRLL			
	B	PA	PA	PA	PA	PA	PA	PA	PA	PA	PA	PA	PA							
	A																			

Tous droits strictement réservés. Reproduction ou communication à des tiers interdite sous quelque forme que ce soit sans autorisation écrite du propriétaire. Property of FCI. Copyright FCI. All rights strictly reserved. Reproduction or issue to third parties in any form whatsoever is not permitted without written authority from the proprietor.



CODE	DIM "M" MATING LENGTH	CONTACT TYPE
U	[6.86]	SIGNAL
T	[6.86]	SIGNAL
S	[6.86]	SIGNAL
R	[6.86]	SIGNAL
PA	[N/A]	POWER
H	[5.59]	SIGNAL
G	[5.59]	SIGNAL
F	[5.59]	SIGNAL
E	[5.59]	SIGNAL

mat'l code		SEE NOTE		tolerances unless otherwise specified		CUSTOMER		FCI	
ltr	ecn no.	dr	date			COPY		www.fciconnect.com	
A	D609-0365	WD	11/21/09	linear				12P + 24S	
				angles		projection		RIGHT ANGLE SOLDER HEADER	
				dr	WARREN DU	11/10/09		product family	PwrBI code
				engr	WARREN DU	11/10/09		dwg no	213
				chr	PM ZHENG	11/10/09		size	sheet
				appd	JOSEPH HSIA	11/10/09		A	1 of 4
sheet index	revision	sheet	1	2	3	4		scale	1:1
			A	A	A	A		code	
				Pro/E				3	
								cage code	
								22526	
								4	

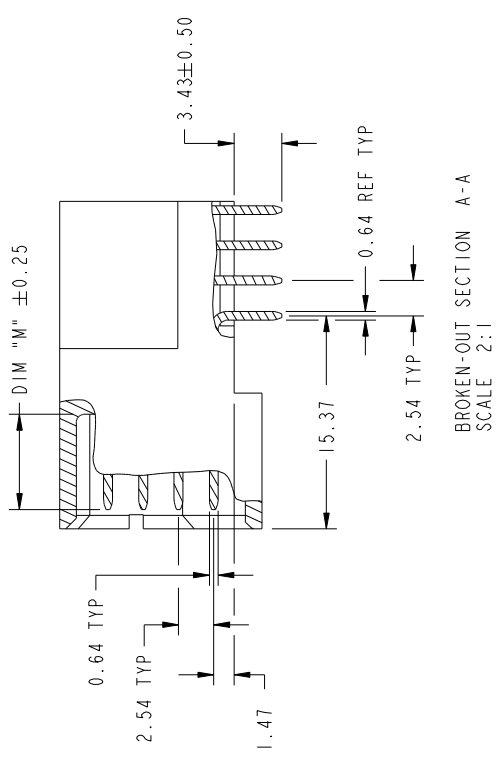
PRODUCT NUMBER
51939-486--
NOTE: 3

Tous droits strictement réservés. Reproduction ou communication a des tiers interdite sous quelque forme que ce soit sans autorisation écrite du propriétaire. Propriété de c.FCI. Droits de reproduction FCI.

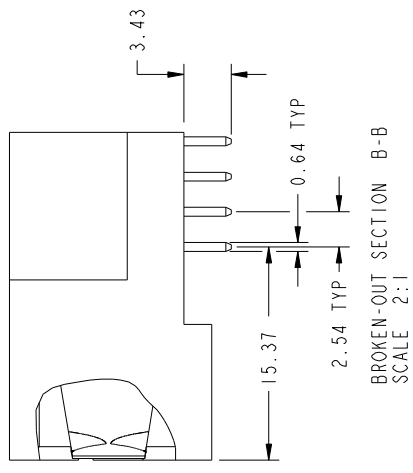


All rights strictly reserved. Reproduction or issue to third parties in any form whatever is not permitted. Copyright FCI.

1 | 2

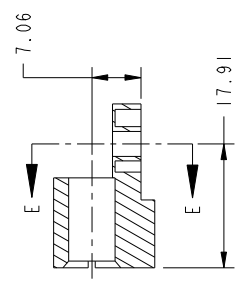


3 |

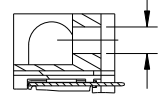


4

A



PARTIAL SECTION E-E



B

1 | 2

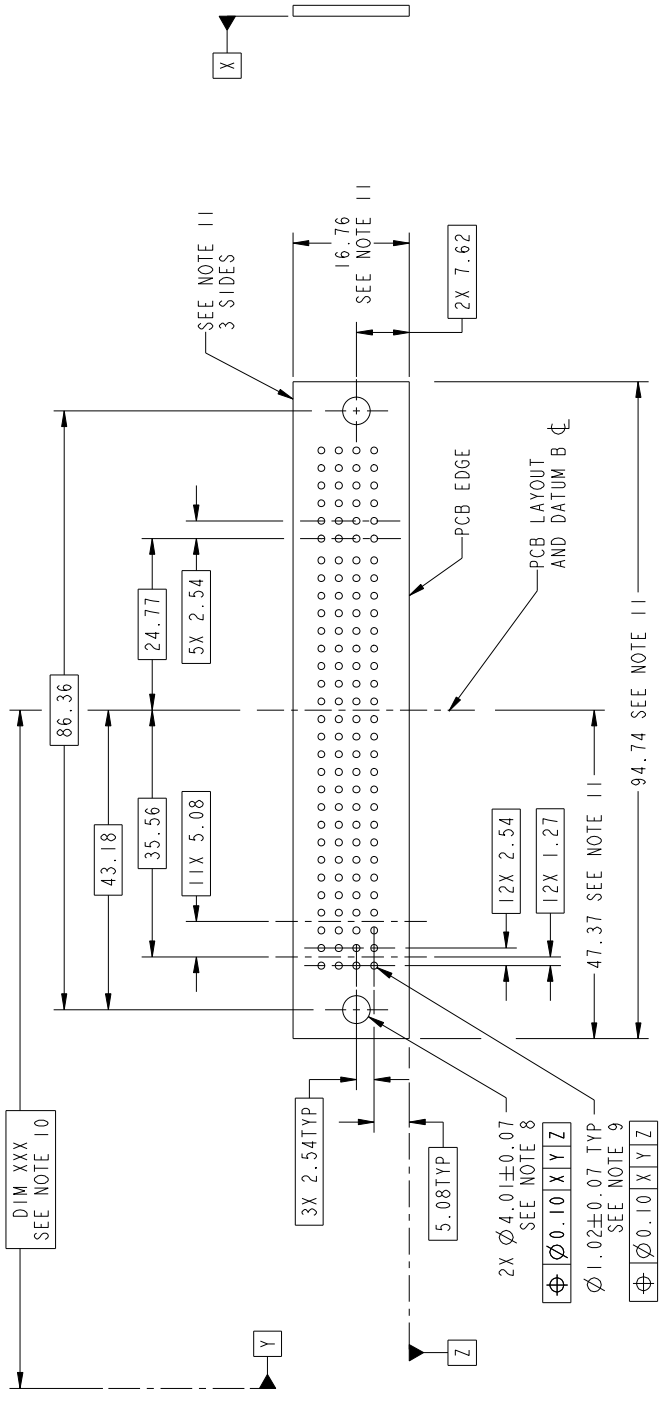
3 |

4

mat'l code		SEE NOTE		tolerances unless otherwise specified		CUSTOMER		FCI	
lfr	ecrn no.	dr	date	linear	angles	projection	copy	title	www.fciconnect.com
A				0.X ±0.5	0.XXX ±0.1	MM		RIGHT ANGLE SOLDER HEADER	
				0.XXX ±0.1	0 ±2°				
		dr	11/10/09	WARREN DU				product family	PwrBt code
		enrg	11/10/09	WARREN DU				size	213
		chr	11/10/09	PM ZHENG				sheet	2 of 4
		appd	11/10/09	JOSEPH HSTA				scale	1:1
sheet index	revision	sheet						code code	22526
									4
									3
									Pro/E

PRODUCT NUMBER
51939-486--
NOTE: 3

Tous droits strictement réservés. Reproduction ou communication a des tiers interdite sous quelque forme que ce soit sans autorisation écrite du propriétaire.
Property of FCI. Copyright FCI. All rights reserved. Reproduction or issue to third parties in any form whatsoever is not permitted without written authority from the proprietor.



RECOMMENDED PCB LAYOUT

mat'l code		SEE NOTE		tolerances unless otherwise specified		CUSTOMER		FCI	
lfr	ecr no.	dr	date	linear	angles	projection	copy	title	www.fciconnect.com
A				0.X ±0.5	0.XXX ±0.1	⊕		12P + 24S RIGHT ANGLE SOLDER HEADER	
				WARREN DU	WARREN DU	MM		product family	
				11/10/09	11/10/09			dwg no	
				PM ZHENG	JOSEPH HSTIA			size	
								code	
								A	
								3 of 4	
sheet index	revision	sheet		scale		1:1		213	
				Pro/E		3		cage code	
								22526	
								4	

1 | 2

3 |

4 |

A

B

1 | 2

3 |

4

PRODUCT NUMBER

51939-486--
NOTE: 3

NOTES:

1. DIMENSIONS AND TOLERANCES ARE IN ACCORDANCE WITH ASME Y14.5M, 1994 UNLESS OTHERWISE SPECIFIED.

CONNECTOR NOTES:

2. HOUSING MATERIAL: UL 94 V-0 GLASS FILLED HIGH-TEMP THERMOPLASTIC
POWER CONTACT MATERIAL: COPPER ALLOY
SIGNAL PIN MATERIAL: COPPER ALLOY

3. PLATING:
SEE ITEM 1 & 2 IN PRINT 10064183 FOR PLATING SPEC OF 51939-486 AND 51939-486LIF RESPECTIVELY.

4. MANUFACTURER'S NAME, DATE CODE AND OPTIONAL P/N TO APPEAR ON THIS SURFACE. THE P/N CAN BE OMITTED IF THERE IS NOT ENOUGH SPACE ON THIS SURFACE.

5. PRODUCT SPECIFICATION 6S-12-149.
APPLICATION SPECIFICATION BUS-20-067.

6. PACKAGED IN TRAYS.

PCB NOTES:

7. ALL HOLE DIAMETERS ARE FINISHED HOLE SIZE.

8. MOUNTING HOLES, WHERE APPLICABLE, ARE UNPLATED.

9. $\varnothing 1.151 \pm 0.025$ DRILLED HOLES PLATED WITH 0.008 MIN SnPb OR Sn OVER 0.03 TO 0.08 Cu PLATING TO ACHIEVE $\varnothing 1.02 \pm 0.07$ HOLE.

10. "DIM XXX" TO BE DETERMINED BY THE CUSTOMER.

11. CONNECTOR KEEP-OUT ZONE.

Tous droits strictement réservés. Reproduction ou communication à des tiers interdite sous quelque forme que ce soit sans autorisation écrite du propriétaire. Propriété de c.FCI. Droits de reproduction FCI.



All rights strictly reserved. Reproduction or issue to third parties in any form whatever is not permitted without written authority from the proprietor. Property of FCI. Copyright FCI.

mat'l code		SEE NOTE		tolerances unless otherwise specified		CUSTOMER		FCI	
lfr	ecr no.	dr	date	linear	angl	dr	enrg	chr	appd
A				$0.X \pm 0.5$	$0.XXX \pm 0.1$	WARREN DU	11/10/09	PM ZHENG	11/10/09
				$0.XXX \pm 0.25$	$0 \pm 2^\circ$	WARREN DU	11/10/09	JOSEPH HSTIA	11/10/09
sheet index	revision	sheet							

Pro/E

1 | 2

3 |

4

product family PwrBlade
dwg no 51939-486
size A
sheet 213
of 4

code 22526