

5

4

3

2

1

受控 CONTROLLED DOCUMENT

| | | | | | |
|-----------|--------------|-----------|----|------------------|-----------|
| 编号 P/N | 32-2900-CUST | 版本 Rev | 01 | 日期 Rel'd Date | SEP 17,09 |
|-----------|--------------|-----------|----|------------------|-----------|

Description: See Table I
 Part No: See Table I
 Application: RJ45 Boot
 Crimp Tool: N/A
 Impedance: N/A
 Frequency Range: N/A
 Material: Boot PVC
 RoHS Compliance: Yes
 Technical Detail: N/A



DRAWING NO.
32-2900-XX-CUST(SEE TABLE I)

REVISIONS

| | | | | |
|----|------------------|--------|--------|--------|
| 01 | OFFICIAL RELEASE | | | |
| | 08-05-09 | Y U | Y U | T H |

Betty 2009.05.11
614:02:09
+0800

D

C

B

A

D

C

B

A

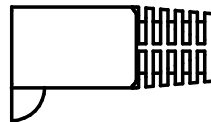
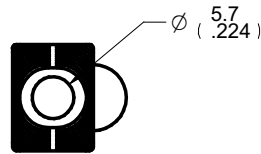
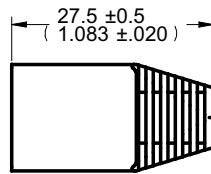
**DIM OUTLINE**

TABLE I

| PART NUMBER | DESCRIPTION |
|-------------|-------------------------------|
| 32-2900WH | RJ45 MOD PLUG RND BOOT, WHITE |
| 32-2900RE | RJ45 MOD PLUG RND BOOT, RED |
| 32-2900GN | RJ45 MOD PLUG RND BOOT, GREEN |
| 32-2900BU | RJ45 MOD PLUG RND BOOT, BLUE |
| 32-2900BK | RJ45 MOD PLUG RND BOOT, BLACK |

| | | | |
|--------------------------------------|--------|-----------------------|------------------|
| TOLERANCE UNLESS OTHERWISE SPECIFIED | | DRAWN BY IVON.W | DATE 08-05-09 |
| DECIMALS | mm | CHECKED BY IVON.W | DATE 08-05-09 |
| X | ± 0.5 | APPROVED BY THOMAS | DATE 08-05-09 |
| X.X | ± 0.3 | U/M | mm |
| X.XX | ± 0.1 | | |
| ANGLES | ± 0.5° | | |



TITLE
RJ45 MOD PLUG RND
BOOT, WHITE(SEE TABLE I)

SHEET 1 OF 1
DRAWING NO.
32-2900-XX-CUST
(SEE TABLE I)

SIZE
A

CUSTOMER COPY

THIS DRAWING WAS PRODUCED BY COMPUTER,
DO NOT SCALE DRAWING OR UPDATE MANUALLY.

5

4

3

2

1

Mouser Electronics

Authorized Distributor

Click to View Pricing, Inventory, Delivery & Lifecycle Information:

[Cinch Connectivity Solutions:](#)

[32-2900GY](#)