

Faster.
Easier.
Better.



BIX Cross-Connect System

Components, Patch Cords, Wires and Accessories

The Belden IBDN BIX Cross-Connect System takes advantage of the proven reliability of BIX technology to provide high-performance connections for voice and data networks. This uniquely designed system allows for very high termination density, while maintaining optimal ease of administration to accommodate MACs.

Advantages of the Belden IBDN BIX Cross-Connect System include easy installation and cable management, coupled with the industry's best performance-to-price ratio for high-density connectivity. The system allows for multiple mounting options of various connectors used in voice and data distribution systems.

BIX Cross-Connect System

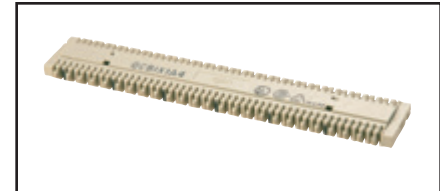
Description	Belden Part Number	
BIX Connectors		
BIX Distribution Connector, 5-pair Marking	A0266828	
BIX Distribution Connector, 4-pair Marking	A0393146	
BIX Multiplying Connector, QCBIX2A, 25-pair, 12x2-pair	A0269923	
BIX Multiplying Connector, QCBIX5A, 25-pair, 5x5-pair	A0266827	
BIX Multiplying Connector, QCBIX7A, 25-pair, 2x2-pair & 3x7-pair	A0269925	
BIX Modular Jack Connector, NXXCBM6U, 6-port, USOC, 8-pin	AX100798	
BIX Modular Jack Connector, QCBIX36D, 6-port, USOC, 8-pin	A0341173	
BIX Modular Jack Connector, QCBIX36C, 8-port, USOC, 6-pin	A0330864	
BIX Modular Jack Connector, QCBIX36B, 12-port, USOC, 4-pin	A0330863	
BIX Mounts and Accessories		
BIX Mount, QMBIX12E, 300-pair	A0340836	
BIX Mount, QMBIX10A, 250-pair	A0270164	
BIX Mount, 50-pair	A0284798	
BIX Mount with Locking Cover, 50-pair	A0277853	
BIX Mount with Snap-on Cover, 50-pair	A0277854	
BIX Locking Cover, for QMBIX12E, 300-pair	A0340838	
BIX Locking Cover, for QMBIX10A, 250-pair	A0285986	
BIX Cover, QMBIX10A, Stand-alone Installation, locking	A0276396	
BIX Cover, QMBIX10A, Stand-alone Installation, non-locking	A0276394	
BIX Distribution Ring	A0270168	
BIX Designation Strip, White	A0270169	
BIX Patch Cords		
	1-Pair	2 Pair
4 ft (1.2 m)	A0410469	A0410494
7 ft (2.1 m)	A0410471	A0410495
10 ft (3.0 m)	A0410473	A0410496
15 ft (4.6 m)	A0410475	A0410497
25 ft (7.6 m)	A0410493	-

For 4-pair connections, please see the GigaBIX Patch Cord section (page 31).

CAT5E GigaBIX Patch Cords, Gray	BIX-BIX	BIX-MA	BIX-MB
4 ft (1.2 m)	AX101963	AX101969	AX101975
6 ft (1.8 m)	AX101964	AX101970	AX101976
8 ft (2.4 m)	AX101965	AX101971	AX101977
10 ft (3.0 m)	AX101966	AX101972	AX101978
15 ft (4.6 m)	AX101967	AX101973	AX101979
25 ft (7.6 m)	AX101968	AX101974	AX101980

BIX Cross-Connect Wire	
1-pair, Wh/Bl, 305 m (1000 ft), K-Carton	XCB1 D87K1000
1-pair, Wh/Bl, 305 m (1000 ft), Spool (S77)	XCB1 D871000
1-pair, Z XC Wire, Bl/Ye, 305 m (1000 ft)	XCZ1 E031000
1-pair, Z XC Wire, Bl/Rd, 305 m (1000 ft)	XCZ1 D921000
2-pair, Wh/Bl/Wh/Or, 305 m (1000 ft), K-Carton	XCZ2 042K1000
2-pair, Wh/Gr/Wh/Or, 305 m (1000 ft), K-Carton	XCB2 A5RK1000
4-pair, Wh/Bl/Wh/Or/Wh/Gr/Wh/Br, 152 m (500 ft), K-Carton	XCB4 000K500

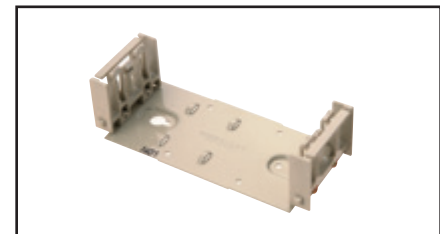
BIX Tools and Accessories	
BIX Connecting Tool	A0270165
BIX Tool Pouch	C0054642
BIX Test Probe, 1-pair	A0270166
BIX Special Service Guard, 1-pair, Red	A0270172
BIX Bridging Clip, 1-pair, Gray	A0325091
BIX Rack Bracket Kit 19 in	A0352331



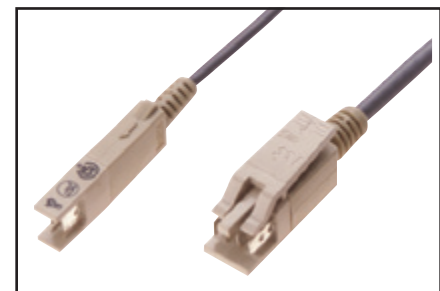
Distribution Connector



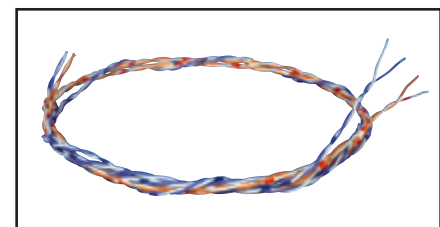
BIX Mount, 300-pair



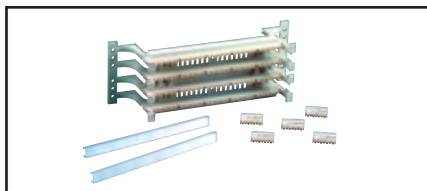
BIX Mount, 50-pair



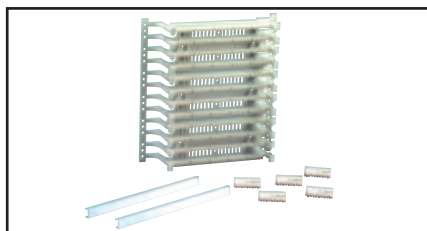
BIX Patch Cord, 1-Pair and 2-Pair



B-Plus Cross-Connect Wire



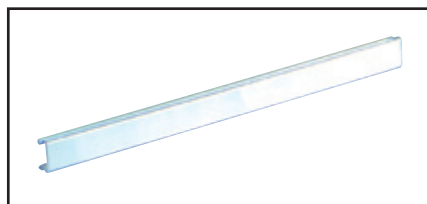
110 Cross-Connect Kit, 100-pair



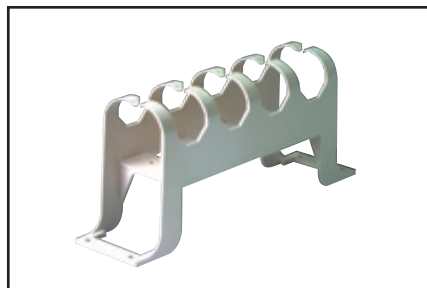
110 Cross-Connect Kit, 300-pair



110 Patch Cords, 110-110



110 Designation Strips



Cable Management Trough with Legs

110 Cross-Connect System

Kits, Components, Patch Cords, Wires and Accessories

The Belden 110 Cross-Connect System uses high reliability Insulation Displacement Connection (IDC) contacts to provide high-performance connections for voice and data networks. This industry standard 110 system allows for very high termination density, while

maintaining optimal ease of administration to accommodate MACs. The system allows for multiple mounting options of 4-pair and 5-Pair Connecting Blocks used in voice and data distribution systems.

110 Cross-Connect System

Description	Belden Part Number		
110 Cross-Connect Kit			
110 Cross-Connect Kit, 100-pair, with 4-pair Connecting Blocks	AX100693-S		
110 Cross-Connect Kit, 100-pair, with 5-pair Connecting Blocks	AX100694-S		
110 Cross-Connect Kit, 300-pair, with 4-pair Connecting Blocks	AX100695-S		
110 Cross-Connect Kit, 300-pair, with 5-pair Connecting Blocks	AX100696-S		
110 Cross-Connect Connecting Components			
110 Connecting Block, 110C4, 4-pair	AX100707-S		
110 Connecting Block, 110C5, 5-pair	AX100708-S		
110 Wiring Block, 100-pair, without legs	AX100690-S		
110 Wiring Block, 100-pair, with legs	AX100691-S		
110 Wiring Block, 300-pair, with legs	AX100692-S		
110 Patch Cord Connector, 4-pair	AX100711-S		
110 Patch Cord Connector, 2-pair	AX100710-S		
110 Patch Cord Connector, 1-pair	AX100709-S		
110 Designation Strip	AX100721-S		
110 Cross-Connect Cable Management Accessories			
110 Cable Management Trough, without legs	AX100705-S		
110 Cable Management Trough, with legs	AX100706-S		
110 Cable Management Ring, Small 5.7 in (144.8 mm)	AX100703-X		
110 Cable Management Ring, Large 8.5 in (216 mm)	AX100704-X		
110 Cross-Connect Patch Cords, Category 5e, 4-pair			
4 ft (1.2 m)	AX300001-S	AX300010-S	AX300008-S
6 ft (1.8 m)	AX300002-S	AX300009-S	AX300005-S
8 ft (2.4 m)	AX300025-S	AX300029-S	AX300011-S
10 ft (3.0 m)	AX300026-S	AX300030-S	AX300034-S
20 ft (6.1 m)	AX300027-S	AX300032-S	AX300017-S
10 Patch Cords, 110-110, Category 5e		1-Pair	2-Pair
2 ft (0.6 m)	AX300039-S		AX300036-S
4 ft (1.2 m)	AX300006-S		AX300013-S
6 ft (1.8 m)	AX300007-S		AX300014-S
8 ft (2.4 m)	AX300012-S		AX300015-S
10 ft (3.0 m)	AX300021-S		AX300037-S
20 ft (6.1 m)	AX300040-S		AX300038-S

Mouser Electronics

Authorized Distributor

Click to View Pricing, Inventory, Delivery & Lifecycle Information:

Belden Wire & Cable:

[AX101984](#) [AX101982](#) [AX101981](#) [AX101983](#) [A0270164](#) [A0270165](#) [A0270166](#) [A0270169](#) [A0393146](#) [AX101936](#)
[AX101937](#) [AX101938](#) [AX101940](#) [AX101942](#) [A0340836](#) [A0266827](#) [A0340838](#)